

Faced with nightmare scenario, New Orleans empties ahead of Ivan

By Doug Simpson
THE ASSOCIATED PRESS

NEW ORLEANS — More than 1.2 million people in metropolitan New Orleans were warned to get out Tuesday as 140-mph Hurricane Ivan churned toward the Gulf Coast, threatening to submerge this below-sea-level city in what could be the most disastrous storm to hit in nearly 40 years.

Residents streamed inland in bumper-to-bumper traffic in an agonizingly slow exodus amid dire warnings that Ivan could overwhelm New Orleans with up to 20 feet of filthy, chemical-polluted water. About three-quarters of a million more people along the coast in Florida, Mississippi and Alabama also were told to evacuate.

Forecasters said Ivan, blamed for at least 68 deaths in the Caribbean, could reach 160 mph and strengthen to Category 5, the highest level, by the time it blows ashore as early as Thursday somewhere along the Gulf Coast.

"Hopefully the house will still be here when we get back," said Tara Chandra, a doctor at Tulane University in New Orleans who packed up his car, moved plants indoors and tried to book a Houston hotel room. Chandra said he wanted to ride out the storm, but his wife wanted to evacuate: "All the news reports are kind of freaking her out."

With hurricane-force wind extending 105 miles from its center, Ivan could cause significant damage no matter where it strikes. Officials ordered or strongly urged an estimated 1.9 million people in four states to flee to higher ground.

At 8 p.m. Tuesday, Ivan was centered about 325 miles south-southeast of the mouth of the Mississippi River and moving north-northwest at 10 mph.

The National Hurricane Center in Miami posted a hurricane warning for about a 300-mile swath from Apalachicola in the Florida Panhandle to New Orleans and Grand Isle in Louisiana. Forecasters said Ivan could bring a coastal storm surge of 10 to 16 feet, topped by large, battering waves.

New Orleans, the nation's largest city below sea level, is particularly vulnerable to flooding, and Mayor Ray Nagin was among the first to urge residents to get out while they can. The city's Louis Armstrong Airport was ordered closed Tuesday night.

Up to 10 feet below sea level in spots, New Orleans is a bowl-shaped depression that sits between the half-mile-wide Mississippi River and Rhode Island-size Lake Pontchartrain. It relies on a system of levees, canals and huge pumps to keep dry.

The city has not taken a major direct hit from a hurricane since Betsy in 1965, when an 8- to 10-foot storm surge sub-

merged parts of the city in seven feet of water. Betsy, a Category 3 storm, was blamed for 74 deaths in Louisiana, Mississippi and Florida.

Experts said Ivan could be worse, sending water pouring over levees, flooding to the rooftops and turning streets into a toxic brew of raw sewage, gas and chemicals from nearby refineries.

Nagin said he would "aggressively recommend" people evacuate, but that it would be difficult to order them to, because at least 100,000 in the city rely on public transportation and would have no way to leave. By midday Tuesday, traffic on Interstate 10, the major hurricane route out of New Orleans, was at a near standstill, and state police turned the interstate west of the city into a one-way route out. U.S. Highway 59 to Baton Rouge also was jammed.

In the French Quarter, businesses put up plywood and closed their shutters. A few people were still hanging out at Cafe du Monde, a favorite spot for French roast coffee and beignets, and a man playing a trombone outside had a box full of tips.

"They said get out, but I can't change my flight, so I figure I might as well enjoy myself," said George Senton, of Newark, N.J., who listened to the music. "At least I'll have had some good coffee and some good music before it gets me."

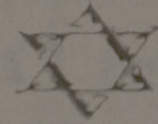


community.

www.comCHURCH.com

On the occasion of the Jewish New Year,

The Jewish students of Texas A&M want to congratulate our University's administration and student leaders for their willingness to accommodate the religious needs of all of this university's student body and faculty. Texas A&M has truly become a beacon of tolerance and diversity for the entire nation.



Texas A&M Hillel Services for Rosh Ha'Shannah and Yom Kippur

Wednesday, September 15
Rosh Ha'Shannah Services at 8:00 p.m.

Thursday, September 16
1st Day of Rosh Ha'Shannah
Services start at 10:00 a.m.

Friday, September 17
2nd Day of Rosh Ha'Shannah
Services start at 10:00 a.m.

Friday, September 24
Erev Yom Kippur
Kol Nidre Services at 8:00 p.m.

Saturday, September 25
Yom Kippur
Services start at 10:00 a.m.
Yizcor about 5:00 p.m.
Break-the-Fast after sundown
following Neilah and Havdalah Services

September 30 - October 1
Sukkot

Friday, October 8
Simhat Torah

Please contact Hillel for more information at 696-7313
Names for Yizcor must be received in the office by September 21

Libations

LIQUOR • BEER • WINE

COME CHECK OUT OUR WEDNESDAY SPECIALS!

WE ALSO DO SPECIAL ORDERS!

3525 S. Texas Avenue, Bryan • 846-7493
(Next to Smoken Joe's)

Hispanic Heritage Month Keynote Speaker

Dr. Juan Flores
Professor in the Department of Africana and Puerto Rican/Latino Studies and Sociology at Hunter College (CUNY)

"There is No Americano Dream: Latinos and the New Culture Wars"
Thursday, September 16th 11:30 a.m.
Koldus Room 111

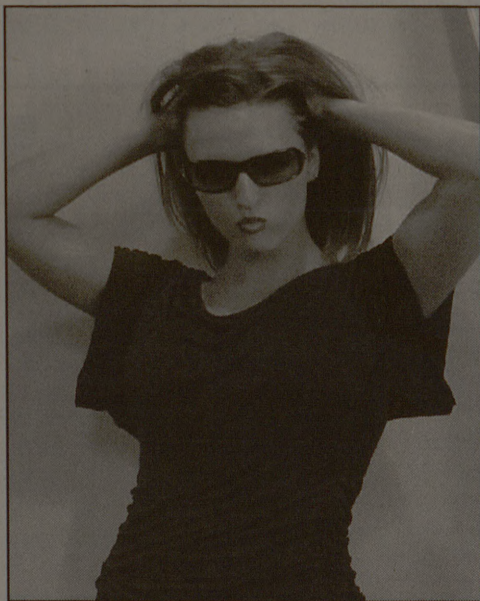
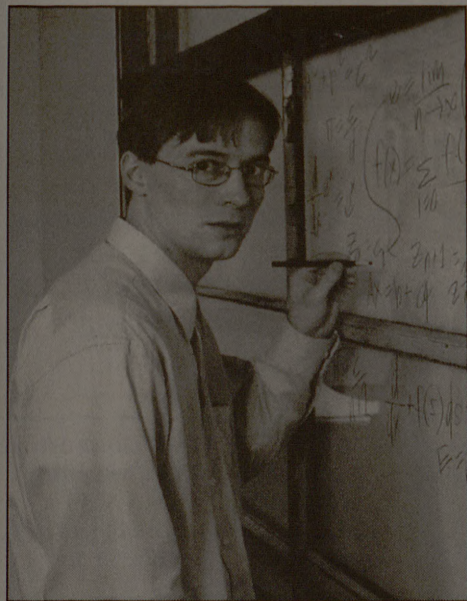
Sponsored by:
VP & Associate Provost for Institutional Assessment & Diversity
Mexican American and Latino Faculty Association
Vice President for Student Affairs
Memorial Student Center (MSC)
For more information go to:
<http://phn.tamu.edu/>
or call 845-4551



ADVERTISEMENT

College Math Club President Dumps Supermodel

He crunched the numbers, then crushed her heart



College sophomore Brady Burns, left, abruptly ended a six-month torrid love affair with a heartbroken Elene, right.

By JAMIE MURRY

Admitting that there was a good $(9-\sqrt{3})^2$ percent chance that he made the wrong move, college math club president Brady Burns recently called it quits with longtime supermodel girlfriend Elene. Burns, who claimed he carefully calculated the breakup, said his alleged free checking account had monthly fees that just didn't add up. The whiz kid was quick to admit that had he known about Washington Mutual's Free Checking Deluxe, the relationship's longevity may have had better odds. "I loved her like

"I loved her like a quadratic formula..."

a quadratic formula, but the off-campus lunches were killing me financially," said Burns. "I felt like a real abacus for breaking things off." The fact that he was unaware of Washington Mutual's Free Checking—an account with optional Deluxe services like free online bill pay available at wamu.com—left Elene at a total loss. "He could have just gone to a Washington Mutual Financial Center or wamu.com," she said. "We were totally soul mates, but I guess he didn't see that. As far as I'm concerned, he can go jump off a logarithm. Whatever that is."

FREE CHECKING DELUXE
1-800-788-7000

Washington Mutual
MORE HUMAN INTEREST™
FDIC INSURED

CAR-POOL
CARING AGGIES & PROTECTING OVER OUR LIVES
693-9905
would like to thank

Plantation Oaks

for five great years of service

We couldn't have done it without you