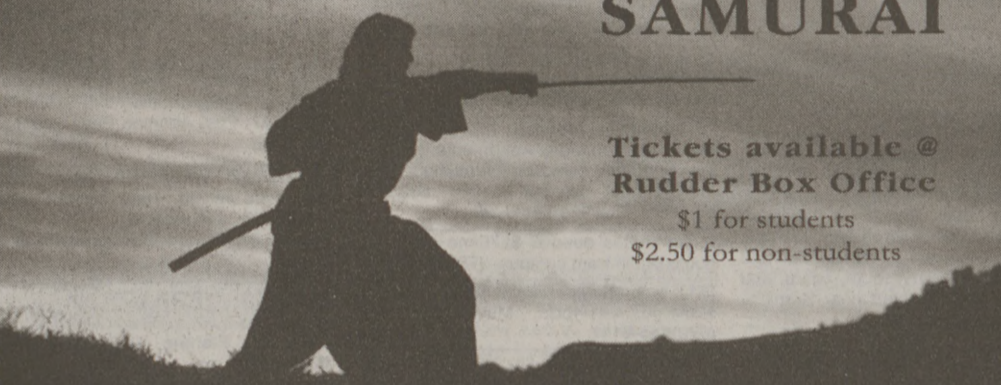


MSC Film Society Presents...

FRI. MARCH 26  
@ 7:00 & 9:45PM  
IN RUDDER THEATRE

# THE LAST SAMURAI

Tickets available @  
Rudder Box Office  
\$1 for students  
\$2.50 for non-students



845-1515

films.tamu.edu

## MSC Aggie Nights

Friday, March 26, 2004

9:00 pm - 1:00 am

In Collaboration w/ SPICMACAY - TAMU

\* **Antaress Indian Fusion Band** in MSC Flagroom

\* **The Last Samurai** at 7:00 & 9:45 pm in Rudder Theater

\$1 w/ TAMU ID In Collaboration w/ MSC Film Society

\* **Free activities in the MSC Basement:** pool, bowling, arts & crafts and DDR in Collaboration with Cepheid Variable

\* **FREE FOOD and Drinks!!!**

\* **PRIZES: Nintendo Game Cube & Digital Camera**

Drawing held at 12:30 am in MSC Flagroom!!!

979.845.1515 aggienights.tamu.edu

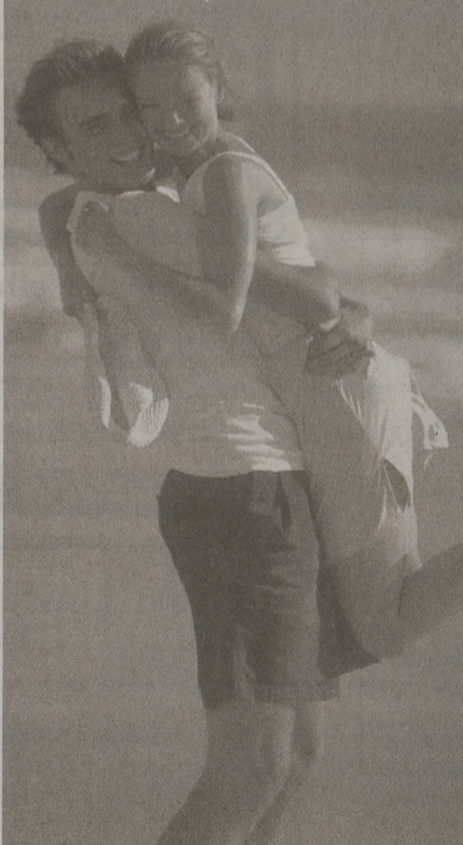
For special needs, please contact us three days prior to the event at 845-1515.

the spring bridal event  
march 26 & 27

widest selection  
original designs  
exceptional service

### INCREDIBLE SELECTION

featuring designs by David Gardner  
Memoire, Natalie K, Verragio,  
Simon G, Christain Bauer and Scott Kay



DAVID GARDNER'S  
JEWELERS + GEMOLOGISTS

the ring source for hopeful couples  
come in, get comfortable and make her dreams come true

Visit the store at 522 University Drive E.  
(Between the Suit Club and Audio Video)  
Call 979-764-8786 for an appointment.

## Track and fields runs to El Paso

By Craig Martin  
THE BATTALION

With less than half of the season left ahead of it and only six weeks until the Big 12 Outdoor Championship, the Texas A&M track and field team is heading to El Paso determined to bring a victory back to College Station.

The air will be thin and the weather will be hot, but A&M head coach Ted Nelson said he feels his athletes are very well prepared and will make A&M proud.

A&M will travel to El Paso this weekend to compete in the University of Texas-El Paso Springtime Invitational. The meet is a five-school event, pitting the Aggies against the University of Oklahoma, UTEP, Texas Tech University and the University of New Mexico.

Nelson said he is looking forward to seeing where the team is so far in the season.

"We'd also like to follow up with a good showing after last week's performance at the College Station Relays and Multis," Nelson said.

The El Paso meet will be the first team-scored meet of the season, and will showcase the abilities of many athletes looking to qualify for regionals.

El Paso's altitude will play a major role in the discus, shotput and javelin competitions. Senior discus thrower Josh Ralston said the altitude will cause less air resistance on the disc.

"The thin air should allow for some records to

be broken," Nelson said.

Besides chalking up a victory for Ralston will be attempting to break his personal best of 206 feet.

The meet will be especially exciting for Ralston, who is looking to redeem himself last year's performance.

"I was in a slump last year, so I'm really looking forward to this event," Ralston said.

The Woodlands native is also looking for a victory over rival Jason Young of Texas Tech in the head-to-head matchup will be worth watching the competition will stay heated in El Paso.

University of Oklahoma co-head coach Lancaster is also looking forward to this invitational.

"This meet will be good, it will get competitive juices flowing," Lancaster said.

Monique Lee, an A&M freshman from Navasota, is looking to qualify for regionals in the 100-meter dash after qualifying 200 at last week's event.

Lee, who will compete in the El Paso meet said she hopes that in addition to qualifying for Regionals she will break her personal record.

said she believes that a solid 11.7 second time will be enough to qualify for regionals. Her personal best time is 11.56 seconds, just a fraction less than what she plans to run this weekend.

The next home meet for the Aggies will be the Saturday April 10, when they host the A&M Invitational.

### Aggies

Continued from page 5

"I think we're playing well," Mechem said. "After we had a bump in the road against LSU, it has shown us, in a good way, that we have to be ready to go every single day. It kind of refocused us."

Oklahoma State (5-6, 1-2 Big 12) and No. 17 Oklahoma (11-1, 1-0) will be formidable opponents this weekend. The Cowgirls, although 1-2, will not be overlooked by the Aggies.

"With Oklahoma State, you never know about them," Kleinecke said. "They play very well against us, and we are going to have to be ready to play. We'll just see what they throw at us."

Oklahoma State has been ranked as high as No. 38 this season. Since then, it has fallen out of the top 75.

"We'll be really ready,"

Mechem said. "They beat us last year in the tournament championship so that will pump us up."

After tangling with the Cowgirls, A&M will meet Oklahoma on Sunday. That will be A&M's toughest test up to this point in the conference season.

"They are having a very good year," Kleinecke said. "We're expecting a dog fight. They compete hard. We're expecting a great battle."

The Sooners have been very impressive so far this season in building an 11-1 record. They have beaten seven ranked teams this season, including recent wins over No. 34 Brigham Young University and No. 21 William & Mary. They boast the No. 6-ranked player in the nation, senior Anda Perianu. She is 9-1 this season and has five wins over ranked opponents. Perianu will face A&M senior Jessica Roland, the No. 16-ranked player in the country.

### Tennis

Continued from page 5

game against the major league team," Peterson said. "They are all excited and pumped up, it lets them see, that's what (Roger Clemens') fastball is like, okay. It'll be the best thing for us. They'll look at Lester Cook and think, 'God, how can I compete?'"

The Aggies believe they have the tools to turn this into a successful season, if they can find some consistency, and consistency will definitely be needed to win in the Big 12.

"I feel like this is the team I've been on, but haven't had the best results," Cook said. "I think if we get time, though, the results come. We just need to find consistency right now, and it will be just a matter of time before we find it."

## NEW SHIPMENT OF LOOSE DIAMONDS!

ROUND DIAMONDS				PRINCESS CUT DIAMONDS			
1.44	K	VVS <sub>2</sub>	3950 <sup>00</sup>	2.23	H	VS <sub>1</sub>	14500 <sup>00</sup> EGL Cert.
1.357	D	SI <sub>1</sub>	7250 <sup>00</sup> EGL Cert.	1.56	I	VS <sub>1</sub>	6900 <sup>00</sup>
1.27	G	SI <sub>2</sub>	4900 <sup>00</sup> EGL Cert.	1.00	G	VS <sub>1</sub>	5460 <sup>00</sup> EGL Cert.
1.06	F	SI <sub>3</sub>	2900 <sup>00</sup> EGL Cert.	.91	E	SI <sub>2</sub>	3400 <sup>00</sup>
1.04	M	VVS <sub>2</sub>	2475 <sup>00</sup> EGL Cert.	.90	G	VS <sub>2</sub>	3450 <sup>00</sup> EGL Cert.
1.03	H	VS <sub>2</sub>	4575 <sup>00</sup>	.90	I	SI <sub>2</sub>	2500 <sup>00</sup> EGL Cert.
1.002	J	VS <sub>2</sub>	2900 <sup>00</sup> EGL Cert.	.87	F	SI <sub>1</sub>	3100 <sup>00</sup> EGL Cert.
1.00	H	SI <sub>1</sub>	4350 <sup>00</sup> EGL Cert.	.82	F	VS <sub>2</sub>	3075 <sup>00</sup>
.95	I	VS <sub>1</sub>	3450 <sup>00</sup> EGL Cert.	.73	E	VS <sub>2</sub>	2920 <sup>00</sup> EGL Cert.
.92	G	SI <sub>2</sub>	4327 <sup>00</sup> IDEAL CUT EGL Cert.	.71	H	VS <sub>2</sub>	2270 <sup>00</sup> EGL Cert.
.92	H	VS <sub>1</sub>	3875 <sup>00</sup> EGL Cert.	.70	H	VS <sub>2</sub>	2100 <sup>00</sup> EGL Cert.
.90	I	SI <sub>2</sub>	2500 <sup>00</sup> EGL Cert.	.66	E	SI <sub>1</sub>	1625 <sup>00</sup> EGL Cert.
.88	G	SI <sub>1</sub>	2700 <sup>00</sup> EGL Cert.	.60	H	VS <sub>1</sub>	1400 <sup>00</sup> EGL Cert.
.86	I	SI <sub>1</sub>	2250 <sup>00</sup> EGL Cert.	.591	G	VS <sub>1</sub>	1500 <sup>00</sup> EGL Cert.
.83	H	SI <sub>3</sub>	1800 <sup>00</sup> EGL Cert.	.56	E	VVS <sub>1</sub>	1600 <sup>00</sup> GIA Cert.
.80	F	SI <sub>1</sub>	2700 <sup>00</sup> EGL Cert.	.54	D	SI <sub>2</sub>	1250 <sup>00</sup> EGL Cert.
.73	F	VS <sub>2</sub>	2450 <sup>00</sup> PGS Cert.	.51	D	VS <sub>2</sub>	1350 <sup>00</sup> GIA Cert.
.73	H	SI <sub>1</sub>	2150 <sup>00</sup> EGL Cert.	.51	D	SI <sub>1</sub>	1275 <sup>00</sup> EGL Cert.
.70	H	SI <sub>2</sub>	1785 <sup>00</sup> PGS Cert.	.50	E	VVS <sub>2</sub>	1500 <sup>00</sup> GIA Cert.
.62	H	VS <sub>2</sub>	1350 <sup>00</sup> EGL Cert.				
.60	K	SI <sub>1</sub>	775 <sup>00</sup> EGL Cert.				
.57	G	VS <sub>2</sub>	1455 <sup>00</sup> EGL Cert.				
.55	E	SI <sub>1</sub>	1525 <sup>00</sup> EGL Cert.				
.54	D	SI <sub>1</sub>	1575 <sup>00</sup> EGL Cert.	.92	H	SI <sub>1</sub>	2945 <sup>00</sup>
.51	F	VS <sub>2</sub>	1685 <sup>00</sup>	.64	I	SI <sub>1</sub>	1250 <sup>00</sup> EGL Cert.
				.45	I	VS <sub>1</sub>	560 <sup>00</sup>
ASHER DIAMONDS (SQUARE EMERALD CUT)				OLD EUROPEAN CUT			
1.07	H	VS <sub>2</sub>	4100 <sup>00</sup> GIA Cert.	1.18	H	SI <sub>3</sub>	3300 <sup>00</sup>
1.01	F	VS <sub>2</sub>	4930 <sup>00</sup> GIA Cert.	1.03	I	SI <sub>3</sub>	2400 <sup>00</sup>
				.91	I	I <sub>1</sub>	1850 <sup>00</sup>
				.60	I	VS <sub>1</sub>	1170 <sup>00</sup> EGL Cert.
				.46	H	SI <sub>1</sub>	675 <sup>00</sup>
ANTIQUÉ CUT DIAMONDS				OVAL DIAMONDS			
1.98	I	SI <sub>1</sub>	7500 <sup>00</sup> Cushion Cut	.84	E	VS <sub>2</sub>	3150 <sup>00</sup> EGL Cert.
1.88	J	SI <sub>2</sub>	4950 <sup>00</sup>	.83	D	VS <sub>1</sub>	3375 <sup>00</sup> EGL Cert.
1.72	I	I <sub>1</sub>	3950 <sup>00</sup>	.81	E	VS <sub>2</sub>	3040 <sup>00</sup> EGL Cert.
1.71	J	SI <sub>3</sub>	4500 <sup>00</sup> Cushion Cut	.72	I	SI <sub>2</sub>	1595 <sup>00</sup> EGL Cert.
1.12	I	SI <sub>1</sub>	2600 <sup>00</sup>	.54	H	SI <sub>2</sub>	950 <sup>00</sup>
1.03	I	SI <sub>2</sub>	2950 <sup>00</sup> Cushion Cut	.32	H	SI <sub>1</sub>	550 <sup>00</sup>
.74	J	SI <sub>2</sub>	950 <sup>00</sup>				
RADIANT CUT				MARQUISE DIAMONDS			
1.06	D	SI <sub>1</sub>	4600 <sup>00</sup> GIA	6.76	G	I <sub>1</sub>	27500 <sup>00</sup>
.51	E	VS <sub>1</sub>	1525 <sup>00</sup> EGL Cert.	1.37	I	SI <sub>3</sub>	3150 <sup>00</sup>
				1.21	K	SI <sub>3</sub>	3450 <sup>00</sup>
				1.14	I	VS <sub>2</sub>	3675 <sup>00</sup> EGL Cert.
				.89	D	VS <sub>2</sub>	3470 <sup>00</sup>
				.48	H	SI <sub>1</sub>	875 <sup>00</sup>
				.31	K	VS <sub>1</sub>	395 <sup>00</sup>
EMERALD CUT DIAMONDS							
1.52	I	VVS <sub>1</sub>	6490 <sup>00</sup> EGL Cert.				
1.12	E	SI <sub>3</sub>	2950 <sup>00</sup>				
.58	I	SI <sub>1</sub>	1150 <sup>00</sup>				

## John D. Huntley, Inc.

Class of '79  
"Very Personal Investments"

Rare Coins, Loose Diamonds, Precious Metal, Fine Jewelry, Watches, Tennis Bracelets  
Cocktail Rings & Colored Gemstones

313B South College Ave. (Next to Harry's) • 846-8916