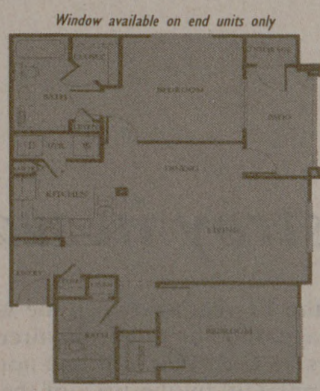


# SIGNATURE PARK



## \$400 PER PERSON

**Signature Park Apartments**  
3780 Copperfield Drive • Bryan, Texas 77802  
979-774-5556  
www.signaturepark.com

Office Hours: M-F 8:30 - 5:30, Sat. 10:00 - 5:00, Sun. 1:00 - 5:00

### Her ideas created the new Explorer SportTrac.

#### And a media frenzy.

She wanted to develop new materials for automotive uses. She ended up developing a brand new automotive category.

Candy's ideas played a key role in the development of the tonneau cover for the all-new Explorer SportTrac. She worked with suppliers to develop the concept. She designed the parts. She conducted testing. And she even worked with Ford assembly on installation.

And when the SportTrac was introduced to the world, so was Candy. The media actually mentioned her by name in several publications. Of course, at Ford Motor Company we've always believed that credit should go where credit is due. And in the case of the new Explorer SportTrac, Candy deserves all the credit in the world. Imagine where your ideas could take you when you explore the world of Ford Motor Company.

**Ford Night Information Session**  
(Marketing, Sales & Service, Product Development, Manufacturing, Purchasing)  
Rudder Tower 301  
October 29, 2003  
6:15 pm - 8:00 pm

Visit us at [www.mycareer.ford.com](http://www.mycareer.ford.com) and learn more about the people, the products, and the potential of Ford Motor Company. We think you'll like what you see.

By choice, we are an Equal Opportunity Employer committed to a culturally diverse workforce.



Candy  
Compact Truck Body Engineer  
Ford Motor Company  
Texas A&M Class of '96

[www.mycareer.ford.com](http://www.mycareer.ford.com)

## Cows with bad grammar. Brilliant.

Like the Chick-fil-A advertising campaign? Then help us produce more smart, fun, memorable ads for dozens of our great clients. If you have both creative and analytical skills, stop by Wehner 113 to learn more about account service careers at The Richards Group.

Thursday, October 30, 6-8 pm



## Senate confirms new EPA head

By John Heilprin  
THE ASSOCIATED PRESS

WASHINGTON — The Senate confirmed Utah Gov. Mike Leavitt as head of the Environmental Protection Agency on Tuesday, filling a four-month vacancy with a lopsided vote that did not reflect the efforts by some Democrats to turn his nomination into a referendum on President Bush's environmental policies.

By a vote of 88-8, senators backed Bush's choice of the Utah Republican to head the nation's lead agency for enforcing environmental rules. Leavitt said he will start the job at EPA on Nov. 6, a day after he resigns as governor. His first task, Leavitt said, will be to earn the trust of EPA's 18,000 employees.

"I continue to be very optimistic that I can make a contribution," he told reporters from Salt Lake City, where he learned about the midmorning vote while working out at a downtown healthclub. "I accepted this responsibility because I believe the president is committed to substantially more progress on the environment, and doing it in such a way that does not compromise our place in the world competitively."

The nominee was helped by his three terms as governor, during which he gained a reputation as an affable and competent manager and molded alliances among Senate Democrats who are Westerners or former governors.

Just after the vote, Sen. James Jeffords, I-Vt., who had once tried to delay the confirmation vote, shared a laugh with and, in a congratulatory gesture, twice patted the shoulder of Sen. James Inhofe, R-Okla., who chairs the Senate Environment and Public Works Committee.

Despite weeks of Democratic efforts to block or delay the vote, including a boycott of one of Inhofe's committee meetings, only eight voted against Leavitt. One, Sen. Frank Lautenberg of New Jersey, led the charge against the nominee on the Senate floor.

"Despite his commentary about balance and stewardship, Gov. Leavitt's record ... reveals a disturbing tendency to place shortsighted economic gain of regulated industries above protecting the long-term health of the public," Lautenberg said.

"The last three years have been the darkest hour of our nation's commitment to environmental protection since EPA was created," he said. "This White

### Senate confirms EPA head

Utah Gov. Mike Leavitt was approved by the Senate to become head of the Environmental Protection Agency today.

- Born on Feb. 11, 1951 in Cedar City, Utah.
- Earned a bachelor's degree in economics and business from Southern Utah University.
- Won the governorship for the first time in 1992 and is serving his third term.
- Married to Jacalyn Smith. He and his wife have five children.

SOURCES: State of Utah, Associated Press

House has repeatedly foisted a penchant for secrecy and cover-up on the Environmental Protection Agency."

Inhofe said opponents were "misrepresenting the Bush administration's progress" on the environment and distorting Leavitt's record. "We desperately need to have this man in the office," Inhofe said of Leavitt, who was nominated in August to fill the vacancy resulting from Christie Whitman's departure in late June.

### NEWS IN BRIEF

#### Separated Egyptian twins continue recovery process

DALLAS (AP) — Catheters in the chest veins of the separated Egyptian twins were removed Tuesday, decreasing the risk of serious infection, doctors at Children's Medical Center Dallas said.

Mohamed and Ahmed Ibrahim are progressing in their therapy sessions and their nutrition is good. Although still weak, they continue to make daily progress, said Dr. James Thomas, chief of critical care services.

Ahmed also visited his brother's room for the

first time Monday.

"He obviously enjoyed his wagon ride to and from the room, but smiled the broadest when he discovered Mohamed in his crib," Thomas said.

"While Mohamed is more physically playful, shaking his rattle and throwing other objects, Ahmed taught himself how to click his tongue this morning and beams with pride each time he does it, especially if the noise gets a response from the staff or family members."

The 2-year-old boys were separated from the tops of their heads in a 34-hour surgery on Oct. 12.

## WICKED WOODS 9

HAUNTED HOUSE

Presented by  
**KAPPA SIGMA FRATERNITY**

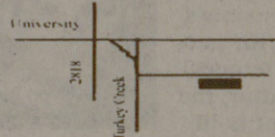
WHEN:  
October 24 & 25, 29-31  
from 8 pm - 1 am

WHERE:  
Kappa Sigma House  
4466 Raymond Stoltz Pkwy  
College Station, Texas 77845

PRICE:  
\$10 OR \$7 & One Canned good

FOR MORE INFO:  
Contact Kappa Sigma  
at 979-268-1159

BENEFITING:  
Brazos County Food Bank  
National Mental Health Association



Visit The World's Largest Closet  
  
thecllogstore.com  
1-800-948-1105

Study Abroad to  
**Double Your  
Employment  
Opportunities**  
To get a FREE info kit,  
e-mail us: [Info@AbroadInRussia.com](mailto:Info@AbroadInRussia.com)  
or call Toll Free: 1-866-889-9889

If You Have Something To Sell,  
Remember:  
Classifieds Can Do It  
Call 845-0569  
THE BATTALION

## THE VINTAGE HOUSE AT Messina Hof WINERY & RESORT

INTRODUCES THREE GREAT WEEKDAY EVENINGS  
ENJOY THREE SPECIAL MENUS SERVED IN THE MOST  
ROMANTIC RESTAURANT IN THE BRAZOS VALLEY.

### WINERY WEDNESDAYS

The best Wednesday evening you can imagine...our remarkable *Vineyard Cuisine* served with a vineyard view and **live romantic guitar**. It's four courses of freshness and it's only \$49.95 per couple, plus tax and gratuity.

### ROMANTIC THURSDAYS

Every Thursday evening from 5 to 10pm, the Vintage House offers a new, special menu just for couples. You'll love everything, including the price. Enjoy four courses for only \$49.95 per couple plus tax and gratuity.

### FRIDAYS: AGGIELAND STEAK & SHRIMP SPECIAL

Every Friday evening, get the perfect aged ribeye and the freshest Gulf shrimp...combined to make this four course evening the highlight of your week...just \$59.95 per couple, plus tax and gratuity.

Reservations or more information, please call  
**778-9463, ext. 31**  
or check out [www.messinahof.com](http://www.messinahof.com).

**THE VINTAGE HOUSE**  
4545 OLD RELIANCE ROAD • BRYAN, TX USA  
ONLY TEN MINUTES FROM CAMPUS