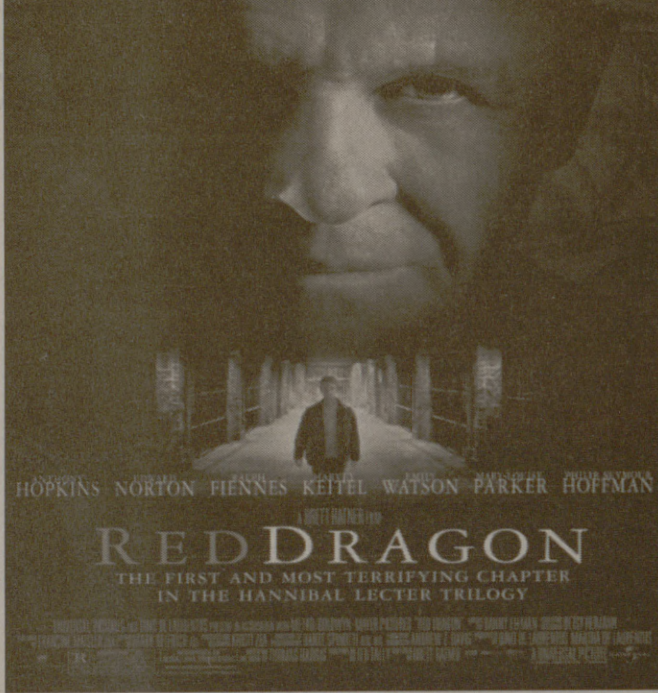




# Presents A Special Advance Screening

TO UNDERSTAND THE ORIGIN OF EVIL YOU MUST GO BACK TO THE BEGINNING.



### Be the first to see it!

### TUESDAY OCTOBER 1, 2002

**R RESTRICTED**  
UNDER 17 REQUIRES ACCOMPANYING PARENT OR ADULT GUARDIAN  
VIOLENCE, GRISLY IMAGES, LANGUAGE, SOME NUDITY AND SEXUALITY  
For rating reasons, go to www.filmratings.com  
National Release Date: October 4, 2002



Texas A&M University • Rudder Theater  
Doors open at 7:30pm • Show starts at 8:00pm

Students may pick up passes in the Rudder Theater Box Office, one week prior to the screening, Monday - Friday, 11:00am - 8:00pm.

First 100 students to arrive with a pack of Big Red gum will receive a Def Jams "3rd Storee" CD, plus other cool stuff.



# Thousands evacuated in wake of Tropical Storm Lili

KINGSTON, Jamaica (AP) — Thousands of Cubans evacuated their homes as Tropical Storm Lili brushed the southeastern tip of the island Sunday after dousing parts of Jamaica and Haiti.

Lili appeared to be gathering strength and could become a hurricane before hitting western Cuba on Tuesday, said Martin Nelson, lead forecaster at the National Hurricane Center in Miami.

By 2 p.m. EDT, the storm was about 25 miles east-northeast of Montego Bay, Jamaica, with winds of 55 mph. A tropical storm becomes a hurricane when its winds reach 74 mph.

In the United States, coastal residents from Texas to Florida were advised to be alert for a direct hit as early as Friday, said Stacy Stewart of the National Hurricane Center.

Lili could start affecting the Florida Keys by Monday or Tuesday with minor rainfall and wind gusts under tropical storm strength, Stewart said.

People left low-lying areas for higher ground in the eastern Cuban provinces of Las Tunas and Camaguey, Cuban television and radio reported.

Rain drenched parts of northern and eastern Jamaica,

prompting warnings of possible flash floods and mudslides. Rescue workers were evacuating the eastern seaside community of Bull Bay, but officials said they had not yet assessed damage in the area.

A house was swept away in eastern Yallahs, but no one was inside, police said. The towns of Trinityville and St. Thomas, located between two rivers, also had severe flooding.

Pounding surf flooded six homes on Haiti's southwest tip. Lili was forecast to be near the Cayman Islands Sunday night while churning along Cuba's south coast.

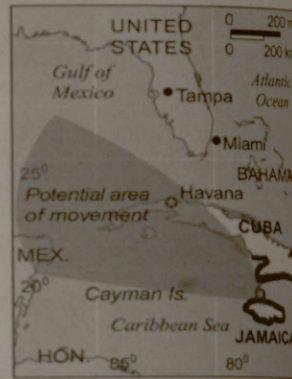
Jamaica was under a tropical storm warning, and the Cayman Islands issued a tropical storm warning for Cayman Brac and Little Cayman. A storm watch was posted for the wealthy British territory's main island, Grand Cayman.

In the eastern Cuban provinces of Santiago, Granma and Las Tunas, high school students were sent home from rural boarding schools where they combine studies with some agricultural work, the Civil Defense said. About 7,000 cattle also were moved to safe areas.

A storm alert was lifted on

### Tropical storm Lili

Position: 18.7 N, 77.6 W  
Sustained winds: 50 mph  
Movement: W 7 mph  
Tropical storm watch  
Tropical storm warning  
As of 11 a.m. EDT



SOURCES: National Weather Service; ESRI

Sunday at Guantanamo Bay Naval Base, where rows of sea side cells hold 598 detainees with suspected links to the Taliban and al-Qaida.

The detainees remained in their cells as the storm passed, and by Sunday morning rain let up as normal boat and air traffic resumed, said Chief Petty Officer Gabriel Puello, a spokesman at the U.S. Southern Command in Miami.

### NEWS IN BRIEF

#### Senegal says more than 970 missing or dead in one of Africa's deadliest ferry disasters

DAKAR, Senegal (AP) — In long, solemn lines, thousands of people pored over photos Sunday of the bloated bodies from one of Africa's deadliest ferry accidents, as the government said that nearly 1,000 people are now believed dead.

Only 64 people are known to have survived when the MS Joola capsized off Africa's West

Coast in heavy winds late Thursday. On Sunday, the government said that 1,034 people were on board the ship, sharply up from the 797 it had first announced.

Six refrigerated ship containers with bodies inside were lined up in the capital's port, while hundreds more disintegrating bodies were offshore waiting to be brought in.

Authorities planned Monday to finish an investigation into what caused the Senegalese state-run boat to sink off Gambia, a former English colony about 30 miles across at its widest point that divides north and south Senegal.

# Why worry about class when there's A+ TUTORING

## MATH 151 & 152 CLASSES ARE BEGINNING DON'T MISS OUT

|                 | Sun. (9/29)           | Mon. (9/30)           | Tues. (10/1)          | Wed. (10/2)           | Thurs. (10/3)        |
|-----------------|-----------------------|-----------------------|-----------------------|-----------------------|----------------------|
| <b>MATH 151</b> | 6-8 pm<br>Lecture #1  | 6-8 pm<br>Lecture #2  | 8-10 pm<br>Lecture #3 | 8-10 pm<br>Lecture #4 | 2-4 pm<br>Lecture #5 |
| <b>MATH 152</b> | 8-10 pm<br>Lecture #1 | 8-10 pm<br>Lecture #2 | 10-Mid<br>Lecture #3  | 10-Mid<br>Lecture #4  | 4-6 pm<br>Lecture #5 |

!!show this add at the ticket window and enter Lecture #1 FREE!!

FOR A COMPLETE SCHEDULE OF THE FOLLOWING CLASSES CHECK OUT OUR WEBSITE AT

### WWW.APLUSTUTORING.WS

- |          |          |          |          |
|----------|----------|----------|----------|
| CHEM 101 | PHYS 201 | MATH 141 | ACCT 209 |
| CHEM 102 | PHYS 202 | MATH 166 | ACCT 229 |
| CHEM 107 | PHYS 208 | MATH 151 | BIOL 113 |
| CHEM 227 | PHYS 218 | MATH 152 | BICH 410 |
| CHEM 228 |          | MATH 251 |          |

\*\*\* We are located behind McDonalds and Taco Bell right across Texas A&M on University. Call us at 260-2660 for additional information.

SPOI

Volume 10!

U.N.

VIENNA. A out a tough p inspectors ope Iraq over a retu Saddam H unfettered ace Chief insp reporters at the the Internati Agency that t under the assu Iraq will be hunting for n chemical weap "The purpo

Shai after Araf

JERUSALE Critics from i Israeli Prime Sharon on Mo dling of the Arafat's headq pressure forced Israeli troops a standoff.

Meanwhile, in the West Bar where Israeli t Palestinian bo 11, Palestinia Israeli soldiers few in the city ing refugee ca with stone-th then with Pal witnesses said.

Sharon was Monday as the over the decisio to pull troops leader Arafat's West Bank to Some said Sha ernment had Washington's keep the Israel flict from unde paign agains Saddam Husse "Sharon is colossal fail notable failure

Cor

Marnie Kelly, Express, waits to Houston. K

You

By Me THE

A recent st Susan G. K

Breast

Source: Susa