



ENVIRONMENTAL FORUM

What: Campus Environmental Organizations coming together
When: Thursday, April 18, 6pm
Where: Koldus Room 144
"The Governance Room"

(FREE PIZZA!!!)

Want to get involved in ENVIRONMENTAL issues on campus?
---This is YOUR CHANCE!!!

Sponsored by:

EiC, NAEF, CARE, and Replant



KONA RANCH

Happy Hour

4-8 pm

99¢ Margaritas

99¢ Draft Beer

Longest & Happiest Happy Hour in College Station

Kona Ranch Hawaiian Grill

520 Harvey Road

Career Paths in Information & Operations Management

Are you interested in finding out more information on career paths in Information & Operations Management?

If so, come to Henderson Hall, Room 114 on Wednesday, April 17th from 6:00 - 7:00 p.m.

Dr. Bala Shetty and Mr. Paul Ammons will discuss

"Career Paths in Information & Operations Management." An informal question and answer session will follow.

FREE PIZZA AND SODAS

This presentation is sponsored by the Student Counseling Service, a Department in the Division of Student Affairs.

Please indicate what your needs are at the time you register for the service or the workshop. Please arrive on time. This program is subject to change without notice. A refund will be given if you are unable to attend. A refund will not be given if you are unable to attend due to a conflict with another class or activity.

A&M looking for payback against Baylor

By Micala Proesch
THE BATTALION

The Texas A&M softball team is looking for redemption as it hosts Baylor in a single game at the Aggie Softball Complex on Tuesday night.

The Aggies (33-11, 6-6 Big 12) faced Baylor (41-13, 8-5 Big 12) earlier this season, as A&M fell 4-0 to the Lady Bears at Gettman Stadium in Waco. While the No. 24 Aggies are ranked lower than the No. 22 Lady Bears in both the Big 12 and national standings, A&M remains confident that it can take down its conference foe.

"Last time we faced Baylor, they played extremely well and we did not play well at all," said A&M head coach Jo Evans. "We are feeling much better going into this matchup with them, and we really feel like this is a game we can win."

The Aggies are coming off a road trip to Oklahoma State where they split a double-header with the Cowgirls, losing the opener 3-2 before taking the second game 2-1.

Sophomore Jessica Slataper (16-7) threw the first game for the Aggies, and though she gave up only two hits, both were homeruns.

The Aggies mounted a comeback attempt after the Cowgirls posted their first two-run home run, but Oklahoma State would not be shut down as it came back and hit a solo shot in the sixth inning to secure the win.

A&M bounced back in the nightcap to even the series with the Cowgirls. Sophomore Lindsay Wilhemson (9-3) threw her 10th complete game of the season and junior catcher Selena Collins hit her 11th home run of the season in the Aggie victory.



Texas A&M first baseman Kelly Ferguson waits in the field during an at bat by Texas' Kristi Robles. A&M will host Baylor tonight at 6:30 p.m. at the Aggie Softball Complex.

The Aggies now have 30 home runs this season, which breaks the previous single-season high of 29 set in 1985 and 1996.

"Overall, the team played really well in both games," Evans said. "I was really pleased with the way we handled Oklahoma State. We played well defensively and offensively and we outthit them in both games."

Baylor split its last conference series with

Iowa State, rallying to beat the Cyclones after losing the first game, 2-0. The Bears managed to rally in a five-run inning to come back and take the game win by Baylor established a school record conference wins in a season.

The Lady Bears will face Wilhemson on the mound at 6:30 p.m. at the Aggie Softball Complex.

Battle

Continued from page 1B

the Aggies, but that means it's time to go to A&M, who knocked off the Horns last year for the first time since 1986.

"The match will be played with a lot of emotion," said A&M head coach Bobby Kleinecke. "I feel like we have an excellent shot with them coming in here to be able to beat them. We just have to put ourselves in position to be able to come away with the win."

"We have to make sure that we don't fall behind early. They are a tough team to come from behind and beat, so it will be extremely important to jump on them early."

One major concern for the Aggies heading into the match is the play of sophomore Jessica Roland, who has lost her last four matches at No. 1 singles.

"In order for us to be good, she has to compete for us every time," Kleinecke said. "It doesn't matter if we play a low team or a high team. Everyone has a good No. 1 player, but I think she is going to turn it around. She gets up for big matches and she will be up for Texas."

Another problem that faces A&M is the status of senior Martina Nedorostova, who pulled a muscle in her match last Thursday against Baylor and injured it against Kansas State. Nedorostova was forced to default her singles match against K-State because of the injury. Her status is questionable against Texas on Wednesday.

"Martina didn't play yesterday," Kleinecke said. "We don't know if she'll be able to play (against Texas) or not."

There is no doubt that the Aggies are ready for this match. They have been looking forward to this opportunity since last year when they finished one win short of the conference title.

"This team has been there before," Kleinecke said. "We beat Texas last year, and it's the same girls back this year. We know we can do it, it's a matter of going out there and getting the job done."

First serve is set for 6 p.m. at the Varsity Tennis Center.

SPORTS IN BRIEF

Two sign to play A&M basketball

Tamea Scales and Natasha Summerville signed National Letters of Intent to play basketball at Texas A&M, head coach Peggie Gillom announced on Tuesday.

Scales averaged 15.4 points, 7.7 rebounds, 3.3 assists and 3.3 steals per game as a senior at Memphis Ridgeway High School.

Summerville, the Player of the Year as selected by the Fort Worth Star Telegram, averaged 37.5 points, 11.1 rebounds and 4.5 steals.

the one book you won't sell back.

Order your copy of Texas A&M University's 2003 AggieLand year-book for only \$30 + tax when you register for fall classes. Simply select miscellaneous fee option 16.

The Gentlemen of Kappa Alpha Order Extend a Sincere Thanks to the Ladies of:

- Alpha Chi Omega
- Alpha Delta Pi
- Chi Omega
- Kappa Alpha Theta
- Pi Beta Phi
- Tri Delta
- Zeta Tau Alpha

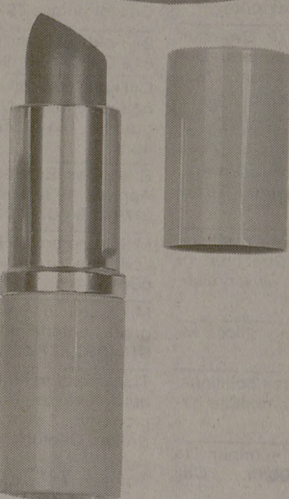
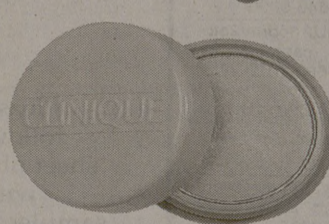
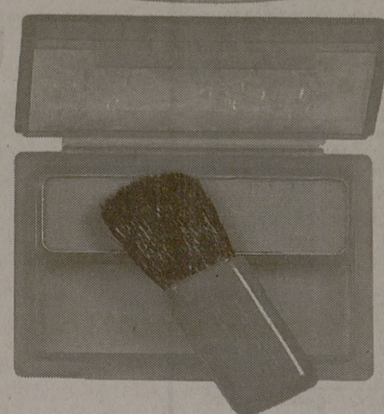
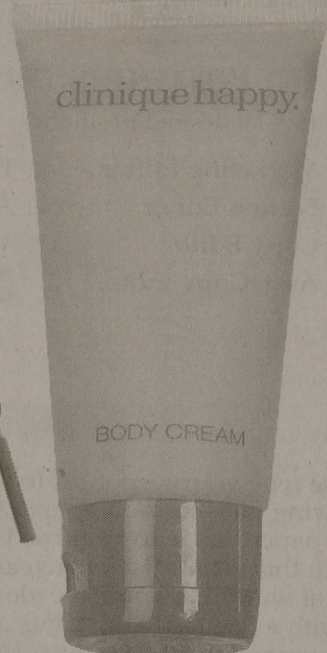
For Their Essential Participation In Raising Over \$9000.00 For MDA

FINAL DAYS!

CLINIQUE FREE GIFT

This eight-piece gift is yours free with any 17.50 or more Clinique purchase:

- Happy Body Cream
- Dramatically Different Moisturizing Lotion
- Anti-Gravity Firming Lift Cream
- Touch Base for Eyes in Silver Lighting
- Soft-Pressed Powder Blusher in New Clover
- Moisture Surge Lipstick SPF 15 in Pink Blush, full size
- Stop Signs Hand Repair
- Coin purse



One of each gift per person, please, while supplies last. All items are travel size unless otherwise indicated.

Dillard's welcomes your Dillard's charge, Visa, MasterCard, American Express, Discover or Diners Club card. SHOP MONDAY - SATURDAY, 10 A.M. TO 9 P.M. SUNDAY, NOON TO 6 P.M. POST OAK MALL • 764-0014

Dillard's

The student come under its job. The negative bim adviser, a fo the paper Amendmer replace Var policy that gross violat students ar The stud public info rather keep campus cri But the stu a right to k stories that adviser are The UT-Y lessly. A str trative inte The adr Administrat posed of an ulty adviser bearing adi The adm missing a l of informa ducted its The Patrio hasty and

Managing E Opinion E News E News E

The Battali and include th the right to ed son at 014 Rec Reed McDonal (979) 845-264

WERE STI CHENEY, SUPA-RTY EFFICIENT

ME LUCKY

What m

Last week pointed me received his met with the tee to review better unde Varsity ath organization strong grad competitive plimented, facts do no we though meeting w percent of depended c munity sen that easily since no re required. A ze that sc service can order or re organization for the gc Further have colleg told a str admission who had school. Me so my cl chance to understand longer cor discriminat but wond because h and it wou ty issues. Vision make Texa