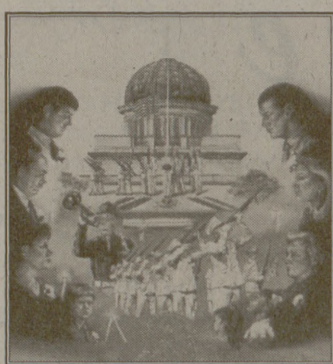


SHE'S BACK!

Tammie L. Bissett
Norman Rockwell Aggie Artist

Christmas Sale
Thursday & Friday
MSC Main Hallway

Beautiful Muster Print
"Never Forgotten"
65% OFF



Other prints consisting of: Anticipation, The Saturday Evening Aggies, Changing of the Guard, Miss Reveille, Expressions, Aggie Cards, Diplomas for parents, husbands, and/or wives.

Worship Directory

Assembly of God

Bethel Temple Assembly of God
2608 Villa Maria,
Bryan
776-4835
Sunday Worship 10:15, 6:00 pm
Sunday School 9:30

Baptist

Living Hope Baptist Church
Sunday Schedule:
9:45 AM Bible Study
11:00 AM Worship
6:30 PM Worship
INFO: 690-1911
We are NOW meeting at
Cypress Grove Inter. School
on Graham Rd. between
Wellborn and the West
bypass service Road.

Fellowship Free Will Baptist Church
College & Career Class
You are invited to a Bible study especially for students.
Sunday mornings at 9:45
1228 W. Villa Maria
779-2297
For more information contact
Marcus Brewer: 696-6558
m-brewer@tam.u.edu
http://PersonalWebs.myriad.net/fwb

Catholic

St. Mary's Catholic Center
603 Church Avenue in Northgate
(979)846-5717
www.aggiecatholic.org
Pastoral Team
Rev. Michael J. Sis, Pastor
Rev. David A. Konderla, Associate Pastor
Campus Ministers - Deacon Bill Scott,
Deacon David Reed, Martha Tonn, Lillian Smith, Maureen Murray, Jill Bludau
Daily Masses
Mon.-Fri.: 6:30 p.m. in the Church
Tues. & Thurs. 12:05 p.m. in the All Faiths Chapel
Sat.: 10:30 a.m. (Korean)
Weekend Masses
Sat.: 5:30 p.m. (English), 7:00 p.m. (Spanish)
Sun.: 9:00 a.m., 11:00 a.m., 5:30 p.m., 7:00 p.m.
Confessions
Wed. 8:30-9:30 p.m., Sat. 4:00-5:15 p.m. or by appointment.

Church of Christ

A&M Church of Christ
1901 Harvey Mitchell Pkwy.
(979)693-0400

Sunday Morning Services:
8 a.m. & 10:30
Sunday Night:
6 p.m.

Aggie Class: Sunday, 9:30 a.m.
Wednesday Bible Study: 7 p.m.



Episcopal

St. Thomas Episcopal
906 George Bush Dr. • College Station, TX
696-1726
Sunday services at 8:00, 9:00 and especially for late rising Ags, 11:15 a.m.
Next door to Canterbury House, the Episcopal Student Center

Presbyterian

Covenant Presbyterian Church
"A welcoming community of faith who reaches out, cares for one another & proclaims the love of Jesus Christ to all"
Thomas W. Estes & G. Thomas Huser - Ministers
Currently Meeting at Pebble Creek Elementary
Sunday Service: 8:30 & 11 a.m.
Sunday School: 9:45 a.m.
Coming Soon (2001) to Rock Prairie & Wellborn
Office: 3404 South College Ave., Bryan, TX 77802
(979) 846-5631, www.covenantpresbyterian.org

First Presbyterian Church (USA)
1100 Carter Creek Parkway
823-8073

Dr. Phillip W. McLarty, Pastor
Rev. Kyle Walker, UCM Dir./Parish Assoc.
Sunday Worship @ 8:30 a.m. & 10:50 a.m.
Church School @ 9:30 a.m.
(Please call 823-8073 if a ride is needed)
Childrens Center: 779-6358
www.fpcbryan.org
fpc@fpcbryan.org

REEL CRITIQUE

MOVIE REVIEWS

Unbreakable
Starring Bruce Willis and Samuel L. Jackson
Directed by M. Night Shyamalan

A rare and profound movie experience, *Unbreakable* is one of the few films to meet and then surpass every expectation and desire the audience could have. Few movies have been as engrossing and satisfying as this one.

David Dunn (Willis) is an ordinary man on his way down in life. A security guard for a college football stadium and near the end of a failed marriage, Dunn is the only survivor of a horrible train wreck. Plagued with doubts and questions about why he survived, Dunn begins an amazing journey of self-discovery as he searches for the meaning of his life.

Revealing anything else about the plot would detract from first time audiences' pleasure. Many people may see this film for a second and probably even a third time.

This raises the question, what is it about writer/director Shyamalan's films that has audiences coming back again and again? His twist ending was largely the cause of the success of *The Sixth Sense*. A better explanation for the repeat business could be the richness of the charac-

ters and the complexity of the story. It is safe to say *Unbreakable* surpasses *The Sixth Sense* in complexity. Shyamalan elevates his magnificent storytelling talent as he further explores the human spirit.

This movie is difficult to classify. It could be called a thriller, but it demonstrates a fine dramatic sense. This film can easily be classified as brilliant.

Much of this film's strength derives from the cast's superb performances. Willis delivers the most captivating performance of his career. He could earn his first Oscar nomination. Jackson shows audiences a new side of his acting by avoiding his cool persona and infusing his character with a genuine sense of tragic loss.

This film, however, is definitely Shyamalan's style. His story and his vision transform this movie into an incredible experience. Refusing to take the easy route, Shyamalan painstakingly develops each scene to its fullest, often with only a single camera setup and a single take. The lack of cuts gives the film a fluidity that heightens the audience's emotional involvement.

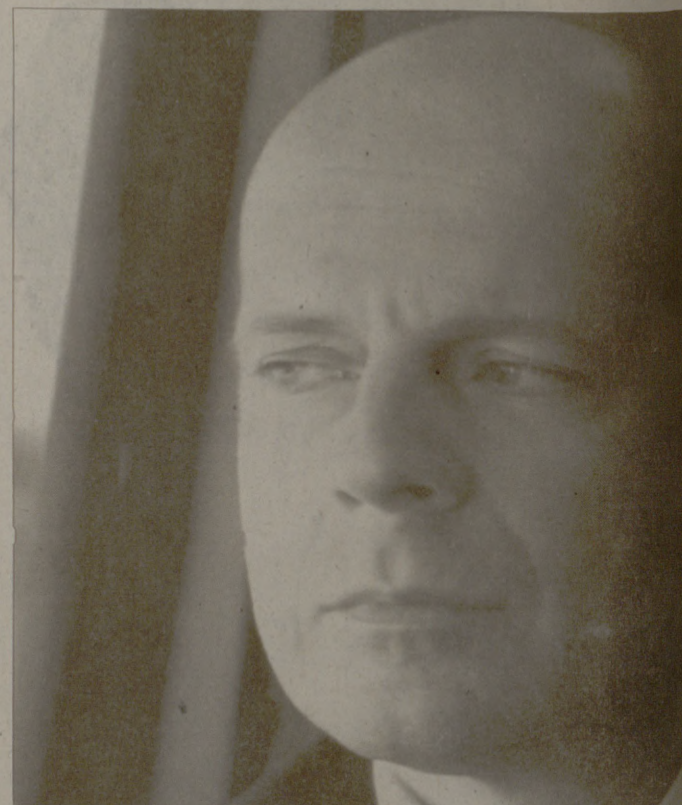
Unbreakable heralds the arrival of quite possibly the finest storyteller Hollywood has ever known. There has never been another director who has so skillfully guided au-

diences through an imaginary world with such astounding results.

There will not be a better film this year. There are only a handful of movies that compare to this one's heart and power.

This is the film to see, and rank as a major turning point in American cinema, expect to see many times. (Grade: A+)

— Matt Mc



Bounce

Starring Ben Affleck and Gwyneth Paltrow
Directed by Don Roos

Bounce is a surprisingly honest look at two people connected through a shared tragedy. At times funny, at times brutally honest, *Bounce* is a convincing drama.

Buddy (Affleck) is an advertising executive who gives a plane ticket to a father anxious to get home to his family for Christmas. When the plane crashes and everyone on board is killed, Buddy is overwhelmed with guilt and turns to drinking. His descent ends when friends check

him into an alcohol rehabilitation center. Upon his release, Buddy decides to look up the widow of the man to whom he gave his ticket. When he finds her, he is drawn into a relationship he did not seek, but cannot escape.

The characters in this film are sharply written and amazingly three-dimensional. Paltrow delivers a beautiful performance devoid of pretense. Affleck delivers his finest performance, not just charming his way through the role, but choosing instead to depict a real person with flaws and emotions.

Writer/director Don Roos (*The Opposite of Sex*) tells an emotional story with a delicate

hand. This film feels like it really happened. Roos drags the film out a little, but with the chemistry between Affleck and Paltrow, it is easy point to overlook.

Bounce's only fault lies in its advertising campaign. Designed to look like a funny romantic comedy featuring two of today's sexiest stars, this movie is anything but. Thoughtful and dramatic, it is a bit more depressing than previous indicate. This does not change the fact that an excellent film that showcases two of the most gifted young performers. (Grade: B+)

— Matt Mc

A = instant classic B = a cut above C = average
D = don't buy it F = burn in effigy

CRASH COURSE
★ SWING ★
WORKSHOP AND DANCE
GREAT INSTRUCTORS HUGE DISCOUNT
DEC. 2ND
10AM - 6PM
DANCE @ 8PM
SIGNUPS IN THE MSC HALLWAY

BIG MEAL DEAL
\$4.99
IT'S ALMOST MORE THAN YOU CAN EAT!
SWENSEN'S
Culpepper Plaza
College Station, Texas
693-6948
Exp. 12-04-00
50¢ extra for any other hamburger



Tossin' one is a \$500 party foul

www.dontmesswithtexas.org