

COUPON

SEARS
HomeCentral

Stop by the Sears Service Center for:
Reconditioned Stereo's, TV's, VCR's, DVD Players & Tools
- All reconditioned items have same warranty as new!
Great prices on new dorm refrigerators, microwaves
& vacuum cleaners.

BRING THIS AD IN FOR \$5 OFF ANY PURCHASE OF \$10 OR MORE!
Expires: October 26, 2000

1500 Holleman Dr., East • 764-0311

BURT'S BEES


Earth Friendly Natural
Personal Care Products

**Burt's Having a
Free for All!**

**FREE SAMPLES
& T-SHIRTS**

Texas A&M Bookstore
in the MSC

Tuesday, August 29 • 11 a.m. - 1 p.m.



**GNC'S LIMITED TIME
Sports Nutrition
Specials!**

Pick up your favorite supplements
now at GNC's best prices ever...

CREATINE MONOHYDRATE Sale **\$49.99** kilo
(good thru Feb 29, 2000)

CHALLENGE 95% PROTEIN Just **\$7.99** lb

**Now Accepting
AGGIE BUCKS!!!**

NEW LOCATION! Rock Prairie
(Kroger Center) 693-2929

Post Oak Mall 696-6159 Freedom Blvd.
(across from Super Walmart in Bryan) 774-9699

GNC Live Well.

Page 8B THE BATTALION Monday, August 29, 2000

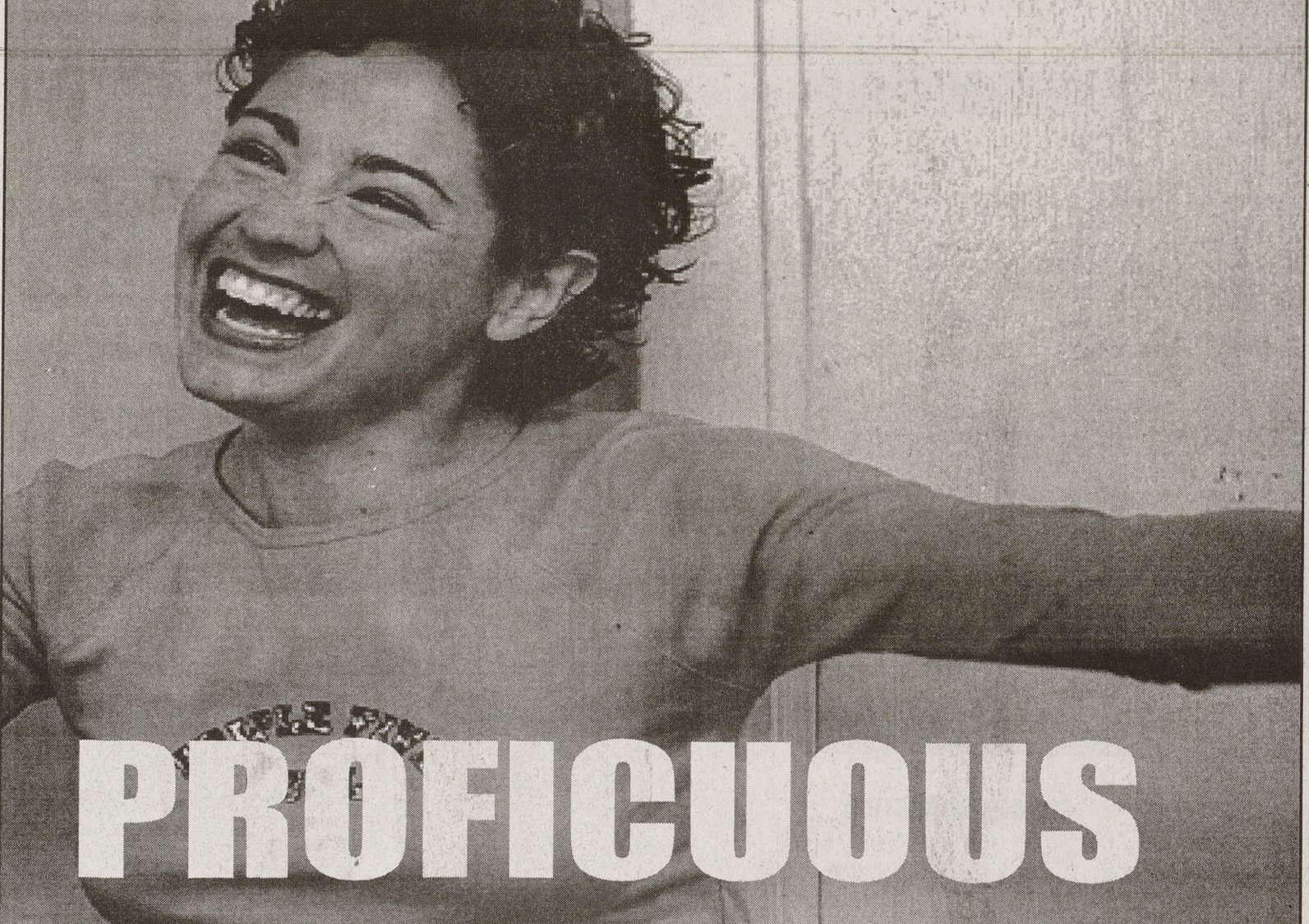


Russell Reed, an employee of a local sign company, hangs banners along University Drive welcoming students to town.

STUART VILLANUEVA/The Battalion

**TEXTBOOKS.
FREE SHIPPING***

*WHEN YOU BUY BOOKS AND ANY GEAR ITEM THROUGH 10/15/00



PROFICUOUS

USE BIG WORDS.

bigwords.comTM

TEXTBOOKS GEAR MUSIC & MORE

FACILITIES

Continued from Page 6B

The soccer team plays its home matches at the 2,400-seat Aggie Soccer Complex on West Campus (directly behind the Aggie Softball Field and across Penberthy Road from Reed Arena).

Admission to soccer matches is the same as with volleyball: free with an All-Sports pass and \$4 dollars for students without one.

The men's and women's cross country teams will be hosting their annual Texas A&M Invitational at the University Golf Course (across Bizzell Street from the Commons) on Oct. 14. Admission to cross country events is free.

Men's and women's basketball entering their third season share the 12,500-seat Reed Arena (in the Campus across from the Student Recreation Center). Admission to games with an All-Sports pass, and prices range from \$4 to \$8 for women's games and \$6 to \$10 for men's games.

The equestrian team competes at the Dick Freeman Arena (on the Mitchell Parkway (F.M. 2816) north of the Parsons Mounted Cavalry stables). Admission to all events is free.

For more A&M ticket information, go to the official site of Texas A&M Athletics, www.AggieAthletics.com

MSC

Continued from Page 1B

result of students going to off-campus barber shops.

"It is possible that the barber shop will close at the end of this year because business has not been what it used to be," Herrin said.

The MSC barber shop has a full staff of barbers and beauticians and services men and women, both Corps and non-Corps members.

The MSC also houses the J. Wayne Stark Galleries on the first floor.

Beverly Wagner, administrative secretary for the galleries, said admission is free. The galleries are home to a number of traveling exhibits that last from six weeks to two months.

The galleries have been in their present location for the past 8 1/2 years and have hosted art exhibits from all over the world.

This year the galleries will host exhibits from the Smithsonian Institute in Washington; "Dreamings," an exhibit of Australian Aboriginal art; and works taken from the A&M campus.

NEO

Continued from Page 1B

A person's log-on name can be the difference between being taken seriously and being dismissed.

Betty Milburn, the associate director of Career Counseling, said she has seen a number of departing acquaintances see the name of a student on a resume and judge the student's abilities and job prospects based on it.

"Don't pick a name that tells who you are and what you can do," she said, advising that students be aware of the impact aliases can have on their resumes.

"Your chosen name is the first thing that you want to project to the world around you. That impression is a powerful thing."

CIS designed Neo to create a new set of options to replace the aging system already in place, Putnam said.

"My expectation is that Neo will be very flexible and will grow with this service," he said.

Students can create their accounts by following the instructions on the website at www.neo.tamu.edu or visiting the Student Computing Information Center (SCC). Tips and information are found at the student computing information pages at www.tamu.edu/scip.

COUNSELING

Continued from Page 1B

development program also works to correct popular misconceptions about preparing for classes and tests.

"Many freshmen, and even upperclassmen, will show up to a class 20 to 24 minutes before the test to get help from other people, but this is actually a pretty bad idea," he said. "Basically, when you get there, you may have a tendency to soak up all the anxiety of the other people waiting to take the test. And, as for sharing information, sometimes that information is not always correct, and this can just add to the confusion you may already have about the material."

Birch said the SCS can be a valuable tool for students experiencing difficulty deciding on majors and career paths.

"We help the student look at their basic interests and make a decision about a major and a beginning career path," he said. "After we get them on their way, we refer them to the Career Center, where they can find more details about the specific job market and possible cooperative-education possibilities."

The SCS also provides profes-

sional psychologists to help students deal with relationship problems, whether they involve significant others, parents or professors.

"Everybody has trouble dealing with someone else important to their lives at some point. ... The real learning how to approach the person," Birch said. "Dealing with professors is no exception. Some students think they can deal with professors by lying to them, but really just need to be straightforward. ... It's not always like dealing with high school teachers."

Birch said one of the most important functions of the SCS is crisis intervention.

"24 hours a day, seven days a week, there is a human voice waiting to help you if you are experiencing something that is making you having trouble dealing with it," he said. "It can be something as simple as a breakup with a boyfriend or girlfriend, or it can be as severe as having suicidal thoughts. There is one emergency psychologist in the morning, two in the afternoon. The rest of the night, there is a hot line where you can get either a trained counselor or psychologist."

Listen to
de
• Ch
TH
Rec
BY RICHARD BR
The Battalion
Construction
Shisa Dining H
Food Court to
2001 semester,
his fall as origi
"We were r
Shisa back [th
Cynthia Zawiej
of the Departme
"We were hopin
ground Food Co
not ready to giv
When the S
fruit in 1911 an
prints were not
current construc
keep on sched
"The buildin
Two
in Ar
shoo
FAYETTEV
two people we
day in an appar
faculty office
Arkansas, auto
Campus poli
tialities, which
ay of classes
Robin Gregory.
Earlier, anothe
Williams, said t
seriously and be
least three shot
nce in Kimpel
rector of Career Counseling
Kimpel Hall
tial employers, professors and
number of depa
acquaintances see the name
ation, drama,
email address as one of the first
pages and jour
pressions a student can make.
burn said.
"Don't pick a name that tells
who you are and what you can
she said, advising that students
aware of the impact aliases can
Kimpel Hall wo
Students left
erly fashion,
old to leave, W
"All we've
have been fired
Journalism f
oley and Robert
asked them to l
ees. Kimpel H
with classrooms
T and offices