

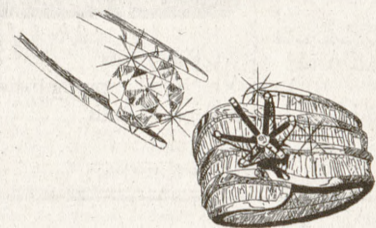
## Camp Longhorn Inks Lake & Indian Springs

**LOOKING FOR:** Counselors  
Nurses  
Nursing Assistants  
Office  
Photographers (experience preferred)

**Want a REWARDING Summer Job? For June, July or August?**

**We will be interviewing: TUESDAY, Feb. 15th 9:30 a.m. - 2:00 p.m. in MSC**

## Potts Jewelry



1405-A Harvey Road  
C.S., Texas 77840  
(409) 680-1385

\*Engagement Rings \*Loose Diamonds \*Custom Design

### Jewelry Repair Special

| Ring Sizing  |           | Regular | 1/2 Price |
|--------------|-----------|---------|-----------|
| Ladies       | Size Up   | \$11.95 | \$5.50    |
| Ladies       | Size Down | \$9.95  | \$4.50    |
| Gents        | Size Up   | \$12.95 | \$6.50    |
| Gents        | Size Down | \$11.95 | \$5.50    |
| Chain Solder |           | \$8.00  | \$4.00    |

All general jewelry repair is **half price** until Feb. 28, 2000. Estimates available upon request.

**FREE JEWELRY CLEANING & INSPECTION!**

**Agricultural Career Exposition**  
Wednesday, February 16, 2000  
Meberg Atrium  
9:00 a.m. - 4:00 p.m.

Ag Workers Mutual Auto Insurance  
Archer Daniels Midland Co.  
Aventis Crop Science  
Cargill  
ContiGroup Companies, Inc. --- Cattle Feeding Division  
Environmental Care, Inc.  
Excel Corporation  
Holm-Dietz FAMOUS Software  
Fireman's Fund Agribusiness, Inc.  
IBP, Inc.  
Lambert Landscape Co.  
Lawns of Dallas  
Peace Corps  
PIC  
Premium Standard Farms  
Sanderson Farms, Inc.  
Sunkist Growers, Inc.  
Texas Agricultural Extension Service  
Texas Agricultural Statistics Service  
Texas A&M Career Center  
Texas Parks & Wildlife  
Tractor Supply Company  
T-Systems International  
USDA/AMS/Dairy Programs  
Wright Brand Foods

Learn more about these companies on the C.O.A.L.S. web page at <http://coals.tamu.edu>.

## GUARANTYBANK

A Temple-Inland Financial Services Company

**GuarantyBank**, the cornerstone of Temple-Inland Financial Services, invites you to follow your path to a career in **commercial lending**. If you are a **finance** or **accounting** major graduating in May or December 2000, we invite you to explore the exceptional career opportunities at GuarantyBank.

Visit our representatives at the GuarantyBank **Information Session and Reception** on Tuesday, February 22 at 6:00 p.m. at Café Excell. Register with the A&M Career Center for on-campus **interviews** held Thursday, March 2.

To R.S.V.P. or for more information, please contact:

MEMBER  
FDIC

GuarantyBank, College Relations  
8333 Douglas Avenue, Suite 620  
Dallas, TX 75225  
800/999-1726 ext. 1929  
214/360-4894 FAX  
E-mail: [collegerecruiting@gfbank.com](mailto:collegerecruiting@gfbank.com)  
[www.gfbank.com](http://www.gfbank.com)



© 2000 Guaranty Federal Bank, F.S.B.

# NATION

THE BATTALION

Monday, February 14, 2000

## Shuttle approaches asteroid's orbit

LAUREL, Md. (AP) — A robot craft that missed its mark a year ago is on target for a Valentine's Day rendezvous with an asteroid named for the Greek god of love. The Near Earth Asteroid Rendezvous (NEAR) spacecraft is approaching the asteroid Eros slowly and is expected to slip into orbit around the mountain-sized space rock at midmorning Monday.

If successful, NEAR will become the first spacecraft to orbit an asteroid. Researchers hope data compiled about Eros could one day help humans defend the Earth against a "killer asteroid" like one thought to have wiped out the dinosaurs 65 million years ago. Eros, a potato-shaped rock, is 21 miles long and eight miles wide; by comparison, New York's Manhattan island is about 13.5 miles long and 2.5 miles wide. Like this planet, Eros orbits the sun, about 160 million miles from Earth.

The \$224 million NEAR mission was launched Feb. 17, 1996. The craft was supposed to have gone into an orbit of Eros in January 1999, but it malfunctioned after a rocket firing that was to have aimed the spacecraft at the asteroid was shut down automatically.

NEAR sped past Eros, capturing photos as it went. Then, for reasons still not understood, the craft went out of control and lost contact with Earth for more than 24 hours.

"We know why the rocket motor shut down," said

Robert Farquhar, the mission director. "But what happened after that is a mystery."

The craft apparently went into wild gyrations and burned about 20 percent of its fuel before it righted itself. With just 10 minutes of power left, NEAR finally was able to aim its solar panels at the sun again and start charging its battery, Farquhar said. If the battery had failed, the spacecraft might not have been heard from again.

Instead, engineers regained control and plotted a new course. NEAR and Eros circled the sun for a year in separate orbits. A series of rocket firings has now brought them close again.

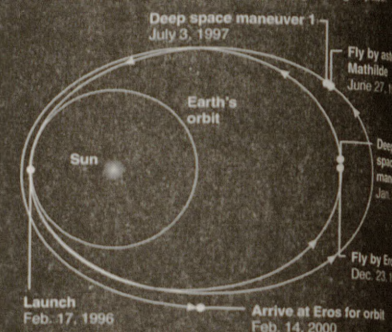
NEAR is to be within 200 miles of Eros at 10:33 a.m. Monday. It will fire small rocket thrusters to drop it into the weak gravity field of Eros and start a year-long orbit of the asteroid.

During the year, the craft will descend slowly and slip into lower and lower orbits. Late in the year, NEAR may actually brush Eros' surface with a solar panel and photograph the mark it leaves.

"That's one of several options the team is considering for the end of the mission," said Farquhar, a scientist at the John Hopkins University Applied Physics Laboratory where NEAR was designed and built under NASA contract. Scientists from Cornell University and the Jet Propulsion Laboratory also are part of the NEAR team.

### Asteroid rendezvous

The Near Earth Asteroid Rendezvous (NEAR) spacecraft is on its way into orbit around the asteroid Eros. It will be the first spacecraft to orbit an asteroid. Here is a look at NEAR's journey through space.



Source: John Hopkins University

NEAR has five instruments, including a powerful camera that will map and probe every surface inch of the asteroid. The instruments will measure density, chemical composition and magnetic fields. The camera will send back photos in different spectra, in black-and-white and color.

NEAR's mission is in service of both science and survival, said Andrew F. Cheng, the chief project scientist and a Johns Hopkins researcher.

## Former Cowboys coach Tom Landry dead at 75

IRVING, Texas (AP) — Tom Landry, the Dallas Cowboys coach who led America's Team to five Super Bowls and was famous for pacing the sidelines in a business suit and felt fedora, died Saturday. He was 75.

Landry had been undergoing treatment since May for acute myelogenous leukemia.

Baylor University Medical Center issued a news release on behalf of Landry's family, saying, "He will never be forgotten by all of us whose lives he has touched so deeply."

"Tom Landry's familiar presence on the Dallas Cowboys' sideline for three decades represented the NFL at its best," NFL commissioner Paul Tagliabue said in a statement Saturday. "He will always rank as one of the all-time great coaches and as an architect of one of the most successful teams in sports history."

Landry, who coached the Cowboys for their first 29 years, won two Super Bowls with star quarterback Roger Staubach. His 270 victories are more than any NFL coach except Don Shula and George Halas.

Landry made his mark through innovations in offense and defense and considered them his greatest contribution to the game. His legacy continued through the coaches he trained, in-

cluding Atlanta's Dan Reeves and former Orleans coach Mike Ditka.

In Landry's first season, 1960, the Cowboys went 0-11-1. He didn't have a winning season until his seventh year. But that began a streak of 20 consecutive winning seasons. His vision titles and five Super Bowl appearances.

Landry was fired by Jerry Jones the day Jones bought the team in Feb. 1989 after the straight losing seasons. His final record was 270-178-6.

When Landry left, he was as much a symbol of the Cowboys as the star on their helmets. "Simply stated, he is the single most important figure in the history of this franchise," Jones said Saturday.

"I think the whole Cowboys imagination came from him," said Staubach, who introduced Landry at his Hall of Fame enshrinement in 1990, just as Landry had done for him in 1983.

Landry was a college star at the University of Texas and a defensive back for the New York Giants in one of the innovative defenses of the early 1950s. At 29, he became a player-coach in charge of defense, and his new system became such successes that Landry had to develop offenses to counter them.

### Chocolate lovers

A recent poll asked more than 1,000 people to name their favorite type of chocolate. Milk chocolate won hands-down with 65 percent versus only 27 percent for dark chocolate. The disparity between the two was thinner, though, in older age groups and in people with a higher level of education.

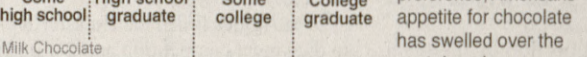
Favorite kind of chocolate by age

| 16-24 yrs. | 25-34 yrs. | 35-44 yrs. | 45-54 yrs. | 55-64 yrs. | 65 and over |
|------------|------------|------------|------------|------------|-------------|
|------------|------------|------------|------------|------------|-------------|



Regardless of their preference, Americans' appetite for chocolate has swelled over the past decade.

U.S. chocolate consumption 14 pounds per person



Some respondents said they don't know or have no favorite.

Source: American Chocolate Manufacturers

AP

### HOPE PREGNANCY CENTERS OF BRAZOS VALLEY

#### FACING AN UNPLANNED PREGNANCY?

**YOU DON'T HAVE TO FACE IT ALONE.**

- Free & Confidential Pregnancy Tests
- Pregnancy, Adoption & Abortion Education
- Practical Assistance
- Post Abortion Counseling
- Adoption, Medical & Community Service Referrals

846-1097

3620 E. 29TH ST. • BRYAN



Camp Olympia's program is outrageously fun and exciting. We are looking for counselors to make a difference in a child's life. You can begin the adventure of a lifetime this summer at Camp Olympia.

With over 35 different activities, it is the perfect place for friendships, fun, adventure and GREAT people.

Term Dates: May 29 to June 11, June 12 to July 2, July 3 to July 23, July 24 to August 6.

**Camp Olympia**

Kathy Davis  
Tommy Ferguson  
Texas A&M University  
Flag Room  
1st Floor MSC  
Feb. 14, 15, and 17th, 2000  
10:00 AM - 3:00 PM

Route 2, Box 25-B • Trinity, TX 75762  
409-594-2541 • [www.campolympia.com](http://www.campolympia.com)

### Be on your way to an "A"

- Organized, detailed, typed notes
- Done by top students in class
- Fast quality service
- Semester packs, exam packs, and daily notes

**HOW DOES IT WORK?** Top students in selected classes take notes which are then typed available for you to pick up the NEXT DAY! You may pick up the notes whenever you want daily, weekly, or before exams - whenever.

|                  |                  |                  |                  |                  |
|------------------|------------------|------------------|------------------|------------------|
| ACCT 209.501     | ECON 324.501-502 | HIST 106.501     | MICR 351.501-510 | RDNG 351.501     |
| ACCT 405.501-504 | ECON 324.501-502 | HIST 106.503-504 | MKTG 321.501-502 | RENR 265.501     |
| ANTH 201.501     | FINC 201.501-504 | HIST 106.511     | MKTG 322.505-506 | SOCM 227.501     |
| ANTH 202.500     | FINC 341.501-503 | HIST 106.513     | MKTG 347.501-502 | SOCI 265.503-504 |
| ANTH 205.505     | GENE 301.509-511 | INFO 364.502-503 | POLS 206.502     | SOCI 316.501-502 |
| ANTH 301.500     | GEOG 201.501     | INFO 364.504     | POLS 206.506-507 | THAR 101.501     |
| ANTH 317.500     | GEOG 203.507-522 | JOUR 301.500     | POLS 207.501.503 | VAPH 305.501     |
| BIOL 113.503     | GEOG 301.501     | LING 209.500     | POLS 207.504-505 | VAPH 404.501     |
| BIOL 114.503     | GEOG 305.500     | MGMT 105.500     | POLS 207.507.509 | VTPB 409.501     |
| ECON 202.505-506 | GEOG 323.500     | MGMT 211.501-502 | POLS 207.508     | ZOOL 107.501     |
| ECON 202.508     | GEOL 101.519-527 | MGMT 211.503-504 | POLS 207.510-511 | ZOOL 320.501     |
| ECON 203.504-505 | GEOL 101.528-536 | MGMT 212.503-504 | PSYC 305.503     |                  |
| ECON 322.501-502 | HIST 105.503     | MGMT 363.501-502 | PSYC 307.501-502 |                  |

694-9403

707 Texas Ave., 222D (Next to Barnes & Noble)

M&C Hospitality presents...

**Student Etiquette Dinner**  
Tuesday, Feb. 15 & Thursday, Feb. 17

Faculty Club  
5:30-8:00 p.m.



An expert in the field of etiquette will provide information and helpful hints to use in a formal setting. The meal will consist of seven courses the cost is \$8.00. Tickets may be purchased at the Box Office. Please call 845-1515 with any questions.

"Dress is business casual"