

National Chemistry Week begins with demonstrations

BY KENNETH MACDONALD
The Battalion

The Texas A&M Chapter of the American Chemical Society (ACS) members will demonstrate common uses of chemistry this week. Today, ACS will demonstrate the chemistry of soft drinks to promote National Chemistry Week in front of the Chemistry Building. Melissa Supak, president of the A&M chapter of ACS and a senior chemistry major, said "Chemistry of Coke" will show among other things, at because of their densities, a can of regular Coke will sink in water, but a Diet Coke will float. "Every day we will be trying to do as many class changes as possible between 11 a.m. and 1 p.m. Our intent is to show people that chemistry affects your everyday life."

mation presented will be about the formation and uses of polymers.

"Polymers are made of long-chain of carbons and hydrogen, with some nitrogens thrown in," she said. "On Friday we will show you how to skewer a balloon (made of a polymer) so that it doesn't pop."

Dr. John Hogg, ACS adviser and a chemistry professor, said the week will wrap up Saturday with an open house for area junior-high and high-school students from 10 a.m. to 3 p.m.

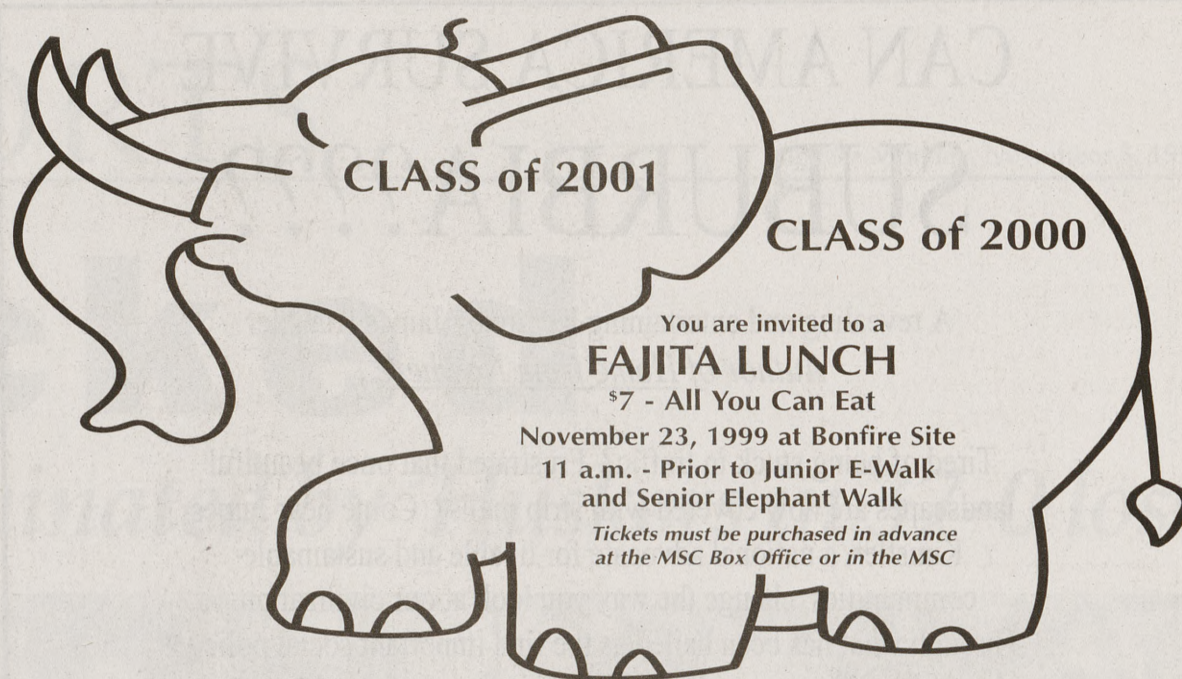
Hogg said two chemistry road shows featuring members of the ACS will demonstrate several laboratory-based experiments at 10 a.m. and at 1 p.m.

"There will also be some hands-on activities with polymers, molecular modeling, tours of the cyclotron and the various labs in the Chemistry Building," he said.

This is the first year for the ACS to celebrate National Chemistry Week and the third year to sponsor an open house.

"Our intent is to show people that chemistry affects everyday life."

— Melissa Supak
President of Texas A&M's
American Chemical Society



Honors Scheduling Consortium

7:30 to 8:30 tonight
MSC 212

Come meet and talk with next semester's Honors professors

There will be representatives present from:

- The Honors Office
- Study Abroad
- The Office of Professional School Advising
- Several Honor Societies

Two workshops will be offered, starting at 7:00, on:

- How to Graduate with Honors
- The National Scholarship and Fellowship Competitions

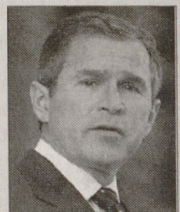
For more information, call the Honors Office at 845-1957

An Honors Student Council program

Florida polls show Bush ahead of Gore

TALLAHASSEE, Fla. (AP) —

A group of Texas Gov. George W. Bush has a commanding lead over Vice President Al Gore among Florida voters, a new poll shows.



BUSH

A joint poll of 600 likely voters by the St. Petersburg Times and The Miami Herald published yesterday shows the Republican frontrunner leading Gore 49 percent to 34 percent in a hypothetical matchup of the 2000 election.

In the Democratic primary, Gore leads former New Jersey Sen. Bill Bradley by 54 percent to 32 percent.

Bradley ties Gore among voters between the ages of 35 and 49. Bradley has made far fewer trips to Florida than the vice president, although his campaign is laying the groundwork for a larger presence.

Yet he does better than Gore against Bush, with Bush winning 45 percent to Bradley's 37 percent.

In the Republican primary, Bush has 59 percent of the vote.

The only other candidate in double digits is Sen. John McCain of Arizona, with 14 percent.

A big advantage in Florida for the Texas governor may be his younger brother, Rob Schroth, the Washington pollster hired by the two newspapers to conduct the poll, said.

Fraternity 'Weight-A-Thon' raises money, awareness

BY ERIKA DOERR
The Battalion

Members of Pi Kappa Phi Fraternity weight-lifted their Saturday away in the "Weight-A-Thon" benefiting Push America, to raise money and awareness for people with disabilities.

Kevin Lindley, a member of Pi Kappa Phi and a junior finance major, said the event began at 6:30 p.m. at the Pi Kappa Phi Fraternity house, with an opening band performing at 7:45 p.m. and Roger Creager performing at 9:30 p.m.

"Push America is our fraternity's national outreach program," he said. "This money is generated in a positive way through this non-alcoholic event."

Lindley said the designated lifters started out at the lowest set and continue to place more weight until the Pi Kappa Phi lifter cannot lift anymore weight.

"Everyone was welcome to join in the event," he said. "Pi Kappa Phi targeted the sororities in order to have a small, general base at first, then extend the event out for years to come, with different factions and a greater amount of people."

Thomas Bain, a member of Pi Kappa Phi fraternity, Push America chair and a sophomore journalism major, said Pi Kappa Phi is the first fraternity to start its own philanthropy, Push America.

Bain said nine sororities and the Aggie Dance Team donated money to the event and were invited to join in the festivities. Smoothie King was also present, giving out free smoothies to those at the event.

"Each sorority was represented by one Pi Kappa Phi 'lifter,'" he said. "The sororities were encouraged to donate either a flat fee or per-pound

donation for the amount of weight their designated lifter could lift."

Tom Sullivan, Pi Kappa Phi fraternity general adviser and an education administration graduate student, said the fraternity raised approximately \$9,000 in 1995 at their philanthropy event.

"In '95, we didn't have the Services for Students with Disabilities joining us, as they are tonight, and we didn't have a concert, as well," he said. "The idea of having a 'Weight-A-Thon' was sparked from a high school fund raising event I saw a few years back."

Sullivan said that beyond fund raising, this "Weight-A-Thon" event benefiting Push America helps spread the awareness for people with disabilities.

"Even with just two people, a foundation can be built to help raise this awareness," he said.

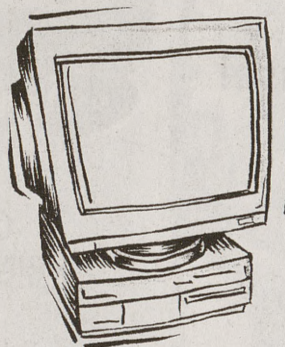
Anne Reber, coordinator of Services for Students with Disabilities, said the division of Student Affairs provides academic services to students with disabilities through programmatic and educational access.

"This is our first year with Push America and we are very excited to be able to have participated and have been invited to be a part of Pi Kappa Phi's philanthropy event," she said.

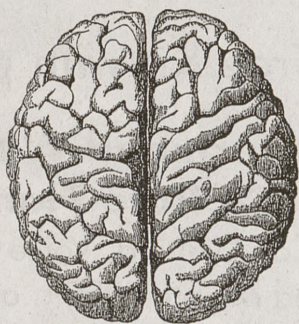
Regina Richardson, Omega Phi Alpha president and a senior biomedical science major, said she was honored when Omega Phi Alpha was invited to the event.

"As a service organization, Omega Phi Alpha is very happy to have been invited to participate and donate money to such a good cause," she said. "Our members were asked to donate a flat amount per-weight lifted, or they donated about 3 to 5 cents per-pound lifted."

Man-made vs. God-made.



Computer.



Computer Operating System.

The human brain has the ability to simultaneously process thoughts, breathing, speech, color, motor skills, and memories...all at an astounding one million messages per second. Is such an incredible mechanism the result of random chance plus time? Or is it possible that we've been thoughtfully and precisely created by a God? A God who's much more than a vague, generic life force?

To see some inspiring evidence for the existence of a loving Creator whom you can have a personal relationship with, call 1-800-236-9238 or email Articles@EveryStudent.com for a free copy of the article "Is There A God?"

Interested in connecting with Campus Crusade for Christ? Call 1-800-678-5462 or email studentline@usc.org

There's a God. You should know.



www.EveryStudent.com

ch
ch sho
cherish the
y that we spen
r know how qu
change."
s night ended
oller handling
after Brewer w
ught that was
do, just give hi
a lot of fanfa
been a long ye
school has ne
a year with the
his one."
ake it day by da
h Laird. "It's si
w."
book
oust
rs in pick
iew on W
up's scr
(AP) — A group
tists meeting
ject an amendm
on's statement
ve is euphem
vience.
e Glazener of F
to be elected pr
ember of the Ba
hip's dictum fo
husbands.
rn the Baptist
ment of 1963, be
that Neanderth
the pastor of G
church, told the P
vention, which is m
w at the El Paso Ch
state organization
million member rates
st Convention. But, it
self from the consens
98 Southern Bapt
ke City, the group
to the denomination
s that outraged m
n's statement on
submit to their
age in solely heter
not binding, past
and others are ec
as the first char
tist Faith and Me
doing it. It's like
nd say, "We're cr
nverted like that
rotest coincided
kend visit to lin
o was burned in
ationalists. The
pnce against that
ptist Church is the
re than 26,000 me
EARN
IONE
ING TO CL
eed GPA 3
w Hiring Notet
for Spring 200
694
707 Texas
(Next to be
et Your
on presents:
o to Is
d Afterlife
n in MSC
lam101@tamu.edu
Wed. between 11:30