

# Be an SI Leader!

Learn what it's all about.  
**Supplemental Instruction  
 Job Fair**  
**Thursday, October 21, 1999**  
**Rudder 701 5:30 p.m.**

**Qualifications:**

- Undergraduate Student
- Good Interpersonal Communication Skills
- Energetic & Motivated
- 3.0 GPR

## THE BEST JOB ON CAMPUS!

Texas A&M University  
 Center for Academic Enhancement  
 Room 525 Blocker  
 845-2724      www.tamu.edu/cae

# JOIN US!



## Irene heads for North Carolina

*Hurricane brings potentially more flooding, expected to make landfall*

WILMINGTON, N.C. (AP) — Hurricane Irene continued to track toward North Carolina yesterday, bringing the potential for more flooding to the storm-weary state.

Officials reported no sustained tropical-force winds on land before dawn yesterday, although sustained winds near 50 mph were clocked over coastal waters.

Still, Irene continued to maintain sustained winds of 75 mph — just above the threshold for a hurricane.

Topsail Beach, northeast of Wilmington, was ordered evacuated yesterday morning. Nearby Onslow Beach, under the Marine Corps' jurisdiction, was closed as well. A steady rain fell across the southeast quarter of the state.

Late Saturday, evacuation orders were issued for Sunset Beach and Ocean Isle along North Carolina's southern coast, and yesterday no one was being permitted on

the nearby Oak Island, Brunswick County emergency officials said.

At 8 a.m. EDT yesterday, the center of the storm was about 115 miles south of Charleston, S.C., moving at 10 mph. A gradual turn toward the north was along with an increase in speed, was forecast yesterday.

Projections from the National Hurricane Center, the ragged eye of the storm near Cape Fear, northeast of Charleston, by yesterday afternoon. It was expected to make landfall near the Virginia-South Carolina state line late yesterday.

A hurricane warning was in effect from Santee to Cape Hatteras, N.C., and a tropical storm warning posted for north of Cape Hatteras to the Virginia coast from St. Augustine Beach, Fla., to Savannah, Ga.

## Fires blaze unchecked across California

BELLA VISTA, Calif. (AP) — Fires burned out of control across thousands of acres of brush and grass yesterday in northern California, where the blazes have destroyed scores of homes and forced thousands of people to evacuate.

Winds moderated in the afternoon, and some of those forced Saturday to flee a 20,000-acre fire in Shasta County were allowed to return to see if they still had homes.

More than 100 structures were destroyed.

"There's people calling who I've known for 20 years, calling to see if their houses are okay," volunteer Fire Capt. Jan Gross, said. "I don't

**"There's people calling ... to see if their houses are okay I don't have the heart to tell them they've lost it."**

— Jan Gross  
 volunteer Fire Captain

have the heart to tell them they've lost it."

Karen Jane Savage, 44, a volunteer firefighter from Junction City,

Calif., died after she was struck by a truck near the blaze. News of the California Department of Forestry said.

The fire was 20 percent contained yesterday, and full containment was expected by Sunday, Wyckoff said. Some 940 firefighters were fighting the blaze.

The fire began at 4:30 p.m. and was fanned by winds to 25 mph.

The loss by yesterday was estimated at \$5 million.

Exact numbers of homes destroyed would likely not be known until the flames were extinguished, fire officials said.

## Nurse convicted of killing 6 patients

BRAZIL, Ind. (AP) — A former nurse was convicted of murder yesterday in the deaths of six patients who authorities said were deliberately given lethal injections at a western Indiana hospital.

Jurors hearing the case of Orville Lynn Majors told the judge they could not reach a verdict on the seventh count.

Majors, 38, faces a maximum of 65 years in prison on each count. The judge set sentencing for Nov. 15.

Majors' sister, Debbie McClelland, said as she paced the courtroom. "How could they do this to him? He didn't kill anyone."

Defense attorneys said they plan to appeal the verdict.

"Lynn is very upset," defense attorney Carolyn Rader said. "It's very human to feel some sense of closure, or peace even, at the worst possible news."

Majors had contended the patients died of the ailments that put them in the hospital, but prosecutors said the deaths were consistent with injections of potassium chloride, epinephrine or both.

Police found containers of both drugs at Majors' house and in his van.

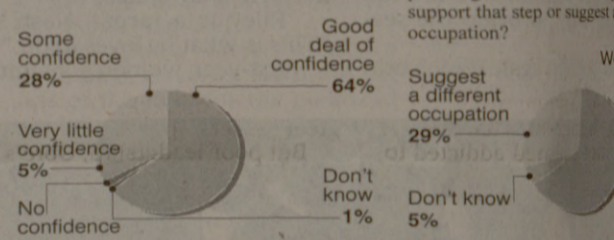
The patients died in a 13-month span at Vermillion County Hospital in Clinton.

## Poll reveals ordinary Americans appreciate U.S. military might

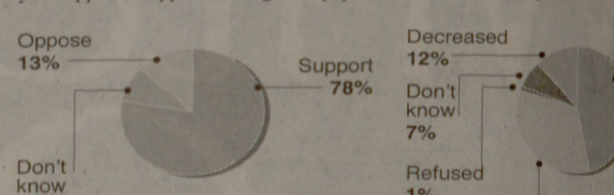
AP POLL  
 Support for U.S. armed forces

An overwhelming number of Americans have a "good deal" or "some confidence" in their military, an Associated Press poll found. Here are the results of the poll.

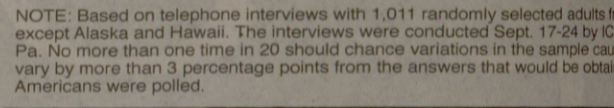
How much confidence do you have in America's armed forces?



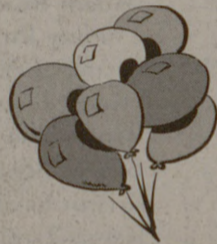
Congress is considering a pay increase for those who serve in the U.S. military. Do you support or oppose raising their pay?



Do you think federal spending on military and defense programs should be increased, decreased or kept about the same?



NOTE: Based on telephone interviews with 1,011 randomly selected adults from all 50 states except Alaska and Hawaii. The interviews were conducted Sept. 17-24 by ICR of Harrisburg, Pa. No more than one time in 20 should chance variations in the sample cause results to vary by more than 3 percentage points from the answers that would be obtained if all Americans were polled.



Honoring Sterling C. Evans's  
 100<sup>th</sup> Birthday



## 1999 BOOKSALE

Texas A&M University  
 General Libraries

In the  
 Academic Building Rotunda

**Silent Auction**  
 Thursday, October 21, 1999  
 8:00 a.m. to 5:00 p.m.

**General Booksale**  
 Thursday & Friday, October 21 - 22  
 8:00 a.m. to 5:00 p.m.

For more information, contact Carolyn Smith  
 at 845-8850

## So, WHAT DO YOU DO?

Some people become scientists. Some balance budgets. Respectable professions no doubt. But Jim West opted for something a little different. He's a puppeteer. What does that mean? There's only one way to find out!

**OPAS JR.**  
 FOR THE YOUNG AT ART!

### Mozart, Monsters & Matisse

Rudder Theatre  
 Saturday, October 23 at 2 PM & 4 PM

For tickets, call 845-1234.  
 Order on-line at  
 opas.tamu.edu.

Generously supported by:  
**The OPAS Guild**  
 Supporting the arts since 1973.

Sponsored in part by:  
**FIRST AMERICAN BANK**



Jim West

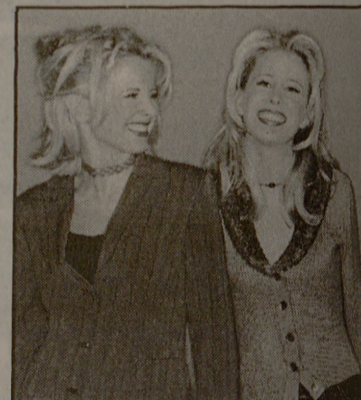
Season Media Partners: **KBTX**, **NTAW**, **KTSR 92.1**, **KORA**

THE UNIVERSITY OF OKLAHOMA CAMPUS ACTIVITIES COUNCIL CONCERT SERIES AND UOSA PRESENTS

# CLAY WALKER

WITH THE KINLEYS LIVE IN CONCERT

8 p.m.  
**FRIDAY, OCT. 22**  
 LLOYD NOBLE CENTER  
 NORMAN, OK



**BEFORE MIDNIGHT YELL!**  
 For tickets call  
**(405) 948-6800**  
 (Limit 10 tickets per customer)

**TEXAS A&M VS. OKLAHOMA**  
 OWEN FIELD, SATURDAY OCT. 23

For more information, please call the LNC Ticket Office at (405) 325-3838.

For Homecoming activities and concert information check out our web site.

**www.ou.edu**  
 Homecoming Concert  
 THE UNIVERSITY OF OKLAHOMA IS AN EQUAL OPPORTUNITY INSTITUTION.