

Macbeth

GRAPHICS COURTESY OF 'MAGINATION STATION

Magination Station performs famous tragedy '30s style

BY AMY DAUGHERTY
The Battalion

Greedy, death and ambition do not stop at the White House — 'magination Station Theatre is making sure Bryan-College Station receives its share of decadence with its production of Shakespeare's "Macbeth," opening Friday.

"Macbeth," Shakespeare's shortest and one of his most widely-known tragedies, is ready to double even the biggest horror fans with its classic tale of passion, war and betrayal.

Jennifer Key, playing the part of one of the three witches, said acting in the play is disorienting.

"When you come in and hear the music, it's terrifying," Key said. "It's just turning out to be a terrifying experience."

In the play, Macbeth and Lady Macbeth, his overly-ambitious wife, devise a plan to murder the king so Macbeth can seize the crown. After killing the king, Macbeth finds himself continually haunted in both real and imaginary situations.

Lady Macbeth finds herself sleepwalking during one of the play's Cliff Note worthy scenes "Out, damn'd spot! out, I say! One — why then 'tis time to do't. Hell is murky ... Yet who would have thought the old man to have had so much blood in him?" she said.

Tying the story's passion with the haunting themes to make audiences understand Shakespeare is a difficult task.

However, Randy Williams, "Macbeth's" director, said he was happy to take on the task and thinks Shakespeare's works still have relevancy to today's audience.

"Shakespeare is so applicable to this century with all the horrible things like World War II and the Holocaust," Williams said. "I just think he has so much to say about

today and the 20th century."

Williams said 'magination Station does two Shakespeare performances a year, one in the summer and one in winter.

He said he hopes people will be less intimidated by Shakespeare and the greatness in his plays through 'magination Station's performances.

"We do Shakespeare here so people can see it and not be afraid," Williams said. "He is such an incredible writer and a genius."



'magination Station's **Richard Lopez** and **Pam Coleman** perform a scene from "Macbeth."

Williams said his production of "Macbeth" is modernized and set in the 1930s because this time period works well for all of Shakespeare's tragedies.

Pam Coleman, playing the role of Lady Macbeth, said her character just wants to be loved by her husband.

"She's lost everything she ever dreamed of — the love and affection of her husband," Coleman said. "All she wanted was his undying love, and I truly think she does love him. She wants what she thinks is the best — to be king."

Richard Lopez Jr., playing the role of Macbeth, said the play's time constraints proved to be difficult.

"The most challenging part was the time frame," Lopez said. "We had five weeks and it was a short amount of time to learn all the lines."

Williams said the cast and crew did not encounter any major difficulties despite the superstitions related to "Macbeth."

"Surprisingly, there have been no problems," Williams said. "There is the idea of bad luck with "Macbeth" and people dying. We've had a couple of sick actors but no big tragedies."

Lopez said playing the part of Macbeth is the challenge many actors dream about.

"It's the part of a lifetime," he said. "As an actor you look for a character to play where you can examine difficult parts of the human states."

"The challenge of the role is staying away from the stereotypes of evil and, in doing that, still remaining true to the script, as well as bringing something to the audience.

They can come away with a better understanding of the story," he said.

"Macbeth" is running for the next three weekends and concludes Feb. 28.

Send a Women's Chorus Singing Valentine

\$12 or \$15 Sale Tables in MSC

For information call
845-5974

We Have Arrived!

No Credit Check Required. No Contract Required.

FREE Long Distance Calls in Texas, UNLIMITED Weekend Usage, FREE Caller ID, FREE Call Waiting, FREE Voicemail, FREE first in-bound minute in your home service area!

AGGIELAND DIGITAL

Walton & Texas Ave., College Station (409) 680-8224

Pre-Paid Rates



100 MINUTES
\$34.99 PLUS
UNLIMITED WEEKENDS

300 MINUTES
\$49.99 PLUS
UNLIMITED WEEKENDS

Some Restrictions Apply. See Store For Details.



SPECIAL VALENTINE'S DINNER

Served from 5 PM - 10 PM
Friday, Saturday, & Sunday

\$29.95
Per Couple
Plus Tax & Gratuity

Fresh Mixed Green Salads to start. Six Fabulous Entrees to choose from. *Champagne for Two or Nonalcoholic Beverage. And top it off with Scrumptious Dessert Tacos.



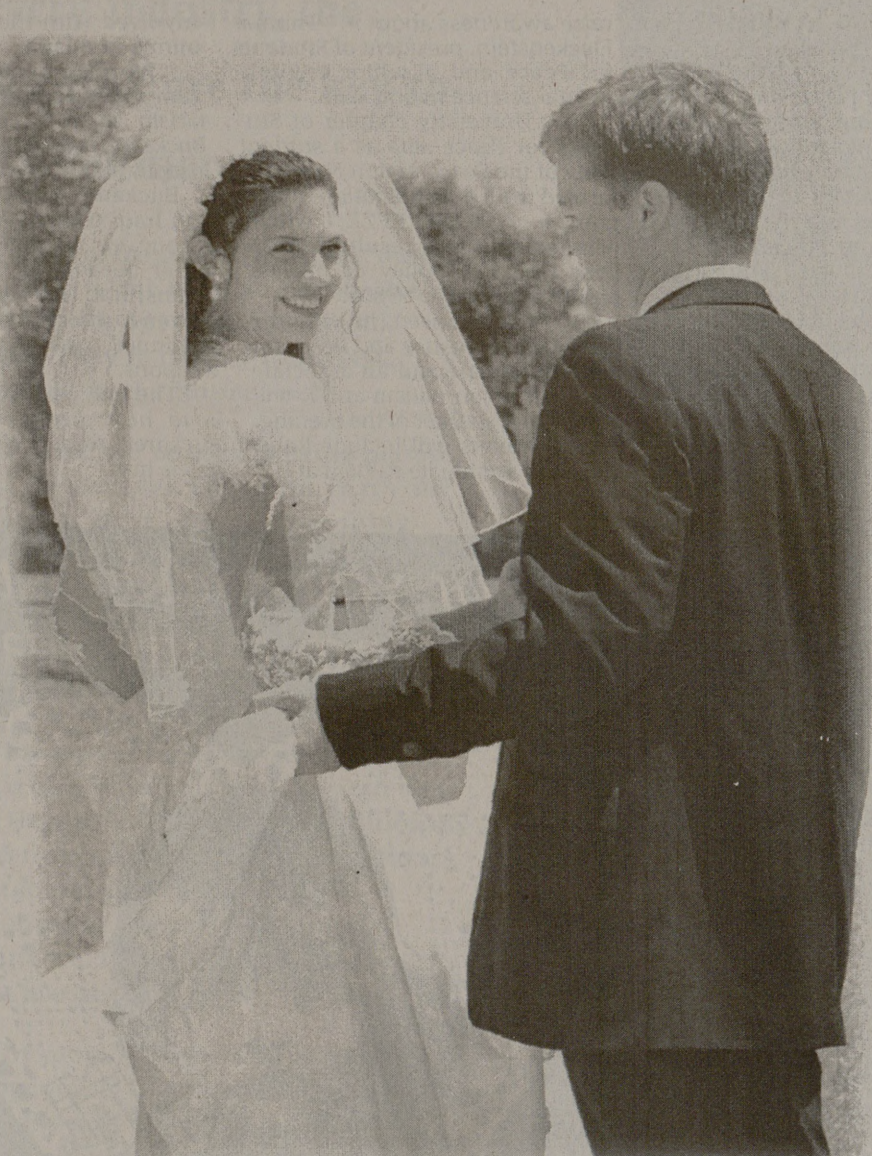
Reservations Required
(409) 693-7500

Sunday Champagne Brunch
From 11AM - 2PM
\$12.95



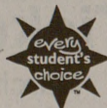
College Station & Conference Center
801 University Drive East

* Must be 21 or older for Champagne. Must have reservation. To get special package must mention ad. Special available valid February 12, 13 & 14, 1999. Based upon availability.



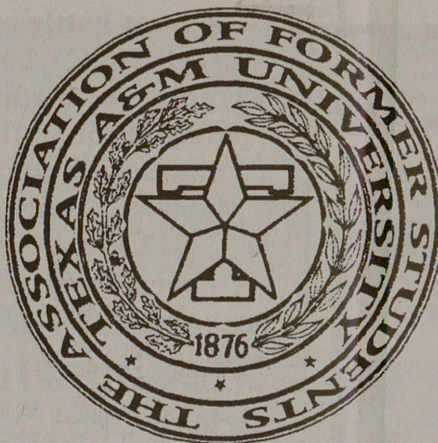
What to wear when you're planning on safe sex.

Nothing beats being married and faithful to take the scare out of having safe sex. Not to mention the anxiety of rejection and heartache when a relationship built on sex fails. Truly safe sex needs more than a condom to protect it. For an article on love, sex, and relationships, just call 1-800-236-9238 for your free copy.



Real love. Don't settle for anything less.

1-800-236-9238 <http://www.everystudent.com/sex>



Class of '99

INTERESTED IN BEING A CLASS AGENT?

TO QUALIFY AS A POTENTIAL CANDIDATE:

You must run in a team of 3 people that are enthusiastic, motivated leaders wanting to serve the Class of '99 until 2004.

REQUIREMENTS FOR INTENT TO RUN:

- One member from each team must contact Shannon Crockett '93 at 845-7514 before NOON on February 15.
- At least 2 of the 3 candidates from each team MUST ATTEND a mandatory information meeting on Monday, February 15, 1999 at 5:30 p.m. at the Clayton Williams, Jr. Alumni Center.

CLASS AGENT RESPONSIBILITY:

Will act as liasons between the Class of '99, The Association of Former Students, and Texas A&M University.

CLASS AGENTS WILL BE ELECTED
MARCH 31 & APRIL 1
IN THE 1999 SPRING
STUDENT BODY ELECTIONS