

Breakfast *in* bed

Local bed and breakfasts offer visitors more than the ordinary

BY MEREDITH HIGHT
The Battalion

Southern hospitality, homemade breakfasts and the charm of an old house — antique furniture, genteel manners and a slower pace of life — this is what most local bed and breakfasts have to offer as an alternative to the blandness of a nationwide chain motel. The Bryan-College Station area is host to a variety of bed and breakfasts that cater to the Texas A&M crowd as well as other visitors, whether they are in town for a Messina Hof function or to see the George

Bush Presidential Library Complex. The Dansby Guesthouse, a home built in 1902, is located in Bryan's Eastside Historic District at 611 E. 29th St., is around the corner from the antiques and restaurants of downtown Bryan. The 4,600 square foot Guesthouse is listed on the National Register of Historic Places. The home was originally built for the President of First State Bank and Trust, Edward Hall, and his family. Ronald Dansby, former mayor of Bryan and a successful businessman, lived in the home for many years. Pam and Harold Dorsey now own the home. Pam

Dorsey said she has run the home for two years while Harold Dorsey has kept his day job. "We wanted to have a bed and breakfast," she said. "The layout of this house is ideal because it gives guests and family privacy. "Nine out of ten guests are a joy to have in our home," she said. "This gives me something to do. This is my baby."



JAKE SCHRICKLING/THE BATTALION

The Ritchey Ranch offers visitors a bed and breakfast atmosphere in a country environment. The Ranch is run by **George and Kay Ritchey**.



JAKE SCHRICKLING/THE BATTALION

The Dansby House bed and breakfast, located in Bryan, was built in 1902 and is on the National Register of Historic Places. The bed and breakfast is run by **Pam Dorsey**, one of the two owners.

Angelsgate Bed and Breakfast, on 615 E. 29th St., is a neighbor to the Dansby Guesthouse. Built in 1909, it is also a National Historic Landmark. The home was built for the Allister Waldrop family.

It features a wraparound porch, gardens and gazebos in the backyard. The accommodations in the Main House include the Lord Garrett Suite, the Lady Margaret Room and the Carriage House.

The watercolor works of Nita Harding, manager of Angelsgate, adorn the walls of the home. Dorsey, a good friend of Harding's, encouraged her to start a bed and breakfast at the home when it went up for sale.

"I saw the house and just fell in love with it," Harding said. "It's a perfect opportunity. I'm an artist, and I can paint in the afternoons and run the bed and breakfast."

Harding said she bought the house in July. "I love doing the bed and breakfast," she said.

Angelsgate can also accommodate small weddings and receptions and has facilities for small business retreats or meetings.

The home is equipped with a computer hook-up, fax machine and copier for business travelers.

The Ritchey Ranch bed and breakfast, a 1920s farmhouse, offers a country atmosphere near the attractions of B-CS.

The Ranch was restored in the mid-80s by Doc and Mary Ritchey to include arched bridges and a white-board fence.

The Ranch, which overlooks a six-acre lake, is also a working cattle ranch and hosts meetings, parties, retreats and picnics, as well as guests looking for some

rest and relaxation. The Ranch offers two 800- by 900-square-foot suites that have a private bathroom, bedroom and living room.

George and Kay Ritchey now own the Ranch and have run it for two years.

"We've seen a steady increase in business," Kay Ritchey said. "We are fortunate to have wonderful neighbors in the Messina Hof Winery. A lot of older people come to see the George Bush Library. People also come for the antiques in Bryan."

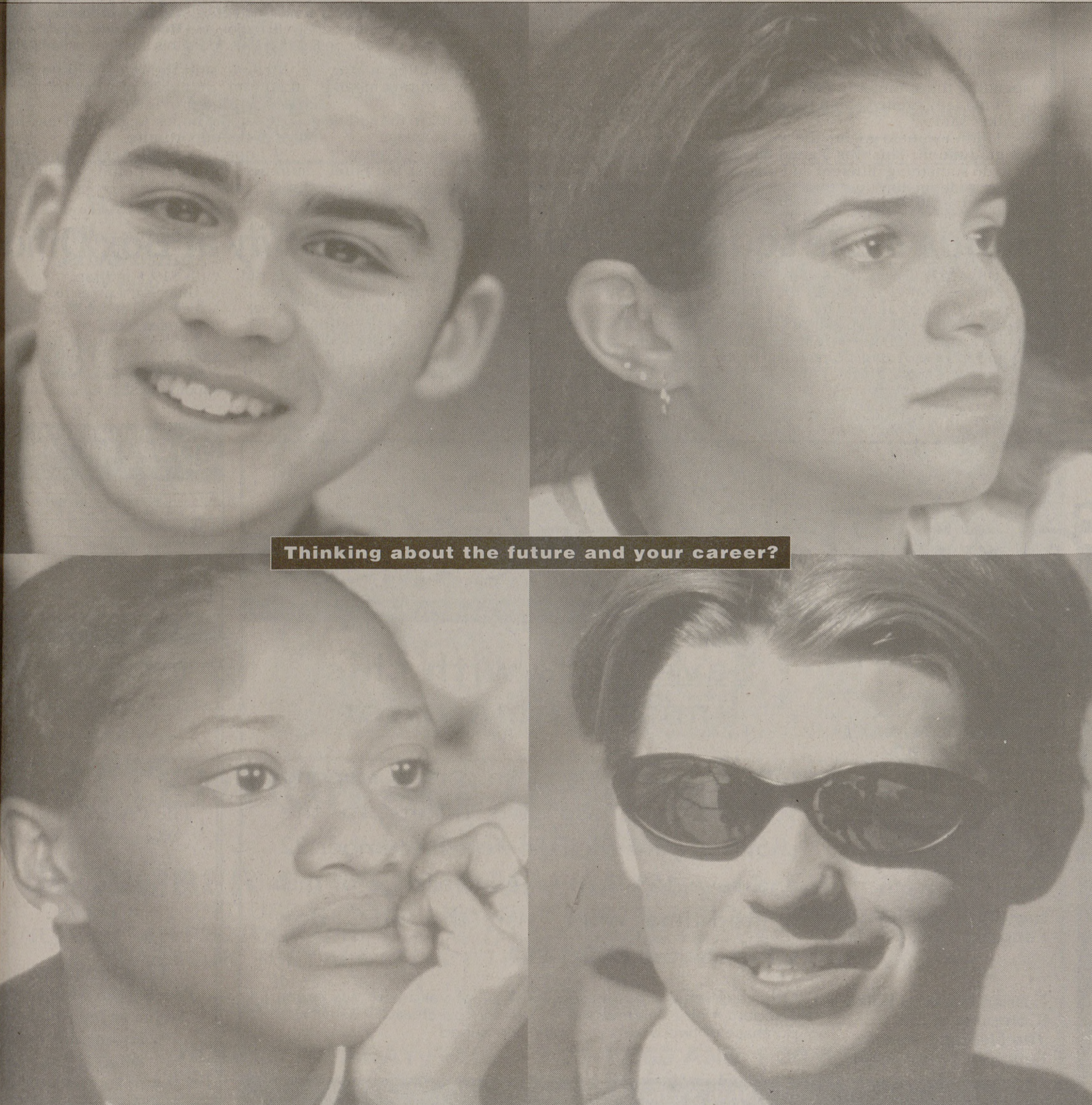
The Ranch differs from other bed and breakfasts because its guesthouse is completely detached from the residence of the owners.

"It's a separate unit. The Ranch is about 300 yards away," Kay Ritchey said.

The Reveille Inn in Bryan, run by George and Janet Friddle, and The Flippin Place in College Station are a few of the other bed and breakfasts in the area.

There are also a number in surrounding towns such as Brenham and Madisonville. Several bed and breakfasts are in the process of forming a Brazos Valley Association of Bed and Breakfasts.

In the meantime, if the charm of an old home or the idea of a homemade breakfast sounds appealing, make reservations early—some are booked until 2000.



Thinking about the future and your career?

Juniors and Seniors—Ready to slip on those corporate shoes and enter the boardroom? Ever wonder what top corporations are seeking in new hires? Gain that competitive edge and add a terrific line to your resume by taking Business Bound at Rice University, from June 13 to July 2, 1999. Join us for an action-packed three weeks, where you'll learn the business basics expected by today's employers. What are you waiting for? It's your turn to change the world.

For more info, call 713-527-6060
Or check out our website:
www.rice.edu/businessbound



CONNECTING WITH THE REAL WORLD