

## Beginning Conversational Language Courses

Call 845-8770 for more information

Courses are being offered for students and non students through the MSC Browsing Library starting Oct. 12 and 13th. Registration can be done after noon and in the evenings in the basement of the MSC in the Craft Center.

### English as a Second Language (ESL)



A course designed for those whose native language is not English. An ESL and American culture class for nonnative speakers, international students and visitors. This course consists of reading, listening and pronunciation of the English language taught through role-play and vocal practice. Eight week class.

Section A — M-W Oct 12, 14, 19, 21, 26, 28, Nov. 2, 4, 9, 11, 16, 18, 23, 30, Dec 2, 7 6:00-7:30pm

Section B—M/W Oct 12, 14, 19, 21, 26, 28, Nov. 2, 4, 9, 11, 16, 18, 23, 30, Dec 2, 7 8:00-9:30pm  
\$60/student • \$65/nonstudent

### Spanish I



The most practical of all foreign languages for anyone living close to the border. Grammar, pronunciation and vocabulary will be stressed in this hands-on course. This course is for beginners who want an intense first encounter with the Spanish language.

T-Th Oct 13, 15, 20, 22, 27, 29, Nov. 3, 5, 10, 12 6:00-7:30p  
\$45/student • \$50/nonstudent

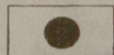
### French



Have you been planning to learn French or maybe travel abroad? This beginning class is for those who are new to the language and need to learn the language quickly. Don't let a lack of language skills interfere with your travel plans.

T-Th Oct 13, 15, 20, 22, 27, 29, Nov. 3, 5, 10, 12 8:00-9:30pm  
\$45/student • \$50/nonstudent

### Japanese



A beginner's class to introduce the student to all the aspects of the Japanese language and culture through firsthand experience. An intense class learning situation for students interested in becoming comfortable with conversing in Japanese and existing within the culture.

M-W Oct 12, 14, 19, 21, 26, 28, Nov. 2, 4, 9, 11 8:00-9:30pm  
\$45/student • \$50/nonstudent

### Chinese



Learn how to speak and also hear the Chinese language (Mandarin) in this beginning level course. This class will cover basic grammar and simple character writing. A must for travel in Asia. Challenge yourself.

M-W Oct 12, 14, 19, 21, 26, 28, Nov. 4, 9, 11 6:00-7:30p  
\$45/student • \$50/nonstudent

## Fish

BY R. DELU



## Simel & Lewis



## South Texas hosts 'Law Talk'

BY MEREDITH HIGHT  
The Battalion

"Law Talk from STCL," a television talk show broadcast from the South Texas College of Law affiliated with Texas A&M University, will premiere tonight at 8 p.m. on television station KAMU.

The show will feature a round-table discussion, a call-in period and "man on the street" interviews. "Law Talk from STCL" will be hosted by Helen Jenkins, a professor at South Texas.

The topic for this month's show is landlord and tenant issues.

The round-table discussion will include Rick Powell, Texas A&M's attorney for the Division of Student Affairs, Justice of the Peace Judge Tom Lawrence of Humble and Professor Shelby Moore of South Texas College of Law.

Guests were selected for their

knowledge on the topics being discussed.

**"It will deal with issues like sexual harassment and drug testing in the workplace."**

— Helen Jenkins  
Professor, South Texas College of Law

Peter Murphy, a professor at South Texas, will appear on each month's episode to explain recent rulings from the higher courts of Texas.

Jenkins said producers of the show hope to gain the interest of

the general public.

"We try to include issues that affect people's lives on a daily basis," she said. "Some are summer bent, some are timely or newsworthy."

Jenkins said the next episode will be "Law in the '90s Works."

"It will deal with issues like sexual harassment and drug testing in the workplace," Jenkins said.

Juvenile justice and family law are also future topics for the show.

Jenkins came up with the idea for the show and said the alliance between South Texas and KAMU is the perfect opportunity to bring the idea to KAMU.

"They decided they were going to do it," she said.

The show now has an agreement with the station to run the show. It will air the second episode of each month.

### CAMPUS CALENDAR

#### Friday, October 9

**TAMU Roadrunners:** There will be a 3-4 mile run held at 4:15 p.m. Meet in front of G. Rollie White. All skill levels are welcome. Contact Mike at 847-6539 for details.

**Phi Beta Sigma Fraternity, Inc.:** The brothers of the Alpha Lambda Alpha Chapter will present a week full of lectures and discussions on refining the "Portrait of the Black Male." Check the blue screens in the MSC or call Cliff at 847-1436 for more information.

**Hillel Jewish Student Association:** Shabba services will be held at 8 p.m. at 800 George Bush. Call

Leanne at 695-1743 for details.

**MSC Nova:** There will be open gaming from 6 p.m.-1 a.m. at the MSC. Check hotel desk for location. Contact Chris at 845-1515 for details.

**VASA:** We will have Pho NITE from 7-8 p.m. in the MSC Dining Center (cafeteria). It will be free for members and \$4 for non-members. All you can eat! BYOB (bring your own bowl/chopsticks). Contact Carol Nguyen at 680-8428 for details.

**A&M Bahai Club:** There will be a general discussion about the Principles of the Bahai Faith and dinner at 7 p.m. Call Breeana at 847-0674 or 764-3160 for more details and directions.

#### Saturday, October 10

**Phi Beta Sigma Fraternity, Inc.:** The brothers of the Alpha Lambda Alpha Chapter will present a week full of lectures and discussions on refining the "Portrait of the Black Male." Check the blue screens in the MSC or call Cliff at 847-1436 for more information.

**MSC Nova:** There will be open gaming from 10 a.m.-1 a.m. at the MSC. Check hotel desk for location. Contact Chris Bodley at 845-1515 for details.

#### Sunday, October 11

**MSC Nova:** There will be open gaming from noon-6 p.m. at the MSC. Check hotel desk for location. Contact Chris at 845-1515 for details.

enlighten • entertain • inspire

# CLASS UP YOUR DATE

WITH THE  
**ST. PETERSBURG STATE SYMPHONY ORCHESTRA**

Direct from Russia • One night only

Searching for ways to impress her? Or him? Try an evening filled with the exquisite classical sounds of the St. Petersburg State Symphony Orchestra. Led by Chief Conductor Ravel Martynov, the acclaimed orchestra will lead you on an unforgettable classical music journey, including a vocal treat featuring accomplished soprano soloist Margarita Alaverdian.



Rudder Auditorium • October 15 at 8 PM • Call 845-1234.  
Visit our website at [opas.tamu.edu](http://opas.tamu.edu) • Accepting Aggie Bucks

**TAMU student tickets start at \$13.00!**



# TEXAS A&M

Maroon Out

Texas A&M vs Nebraska  
October 10, 1998

Ignite the Spirit:  
Wear Maroon



<http://MaroonOut.tamu.edu>

Presented by Class Council



## The Battalion

105 YEARS AT TEXAS A&M UNIVERSITY

**Mandy Cater Graeber**, Editor in chief  
**Kasie Byers**, Aggiefife Editor  
**Brad Graeber**, Visual Arts Editor  
**David Johnston**, Opinion Editor  
**Andrew Bailey**, Radio Producer  
**Jeff Schmidt**, Sports Editor

**Aaron Meier**, Managing Editor  
**Matt Weber**, Night News Editor  
**Brandon Bollom**, Photo Editor  
**Laura Stuart**, Radio Producer  
**Jeremy Brown**, Web Editor  
**Jeff Webb**, Sports Editor

**News:** The Battalion news department is managed by students at Texas A&M University, Division of Student Publications, a unit of the Department of Journalism. News offices are located in Reed McDonald Building, Newsroom phone: 845-3313; Fax: 845-2647; [batt@unix.tamu.edu](mailto:batt@unix.tamu.edu); Website: <http://battalion.tamu.edu>

**Advertising:** Publication of advertising does not imply sponsorship or endorsement by The Battalion. For campus, local, and national display advertising, call 845-2696. For classified advertising, call 845-0569. Advertising offices are in 015 Reed McDonald, and office hours are 9 a.m. to 5 p.m. Monday through Friday. Fax: 845-2678.

**Subscriptions:** A part of the Student Services Fee entitles each Texas A&M student to pick up a copy of The Battalion. First copy free, additional copies 25¢. Mail subscriptions are \$60 per semester, \$30 for the fall or spring semester, \$17.50 for the summer or \$10 a month. To charge by MasterCard, Discover, or American Express, call 845-2611.

**The Battalion** (ISSN #1055-4726) is published daily, Monday through Friday during the regular semesters and Monday through Thursday during the summer session (except University holidays and exam periods) at Texas A&M University, Periodicals Postage Paid at College Station, TX 77840. POSTMASTER: Send address changes to The Battalion, 015 Reed McDonald Building, Texas A&M University, College Station, TX 77843-1111.