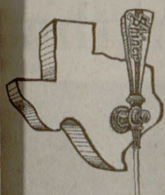


The Battalion



Strange Brew

Tour of brewery offers look into making of Shiner

BY BETH FOCHT
The Battalion

brewery an old-world recipe that had been passed down in his family for generations.

Two types of beer, Shiner Blonde and Shiner Bock, originated from this recipe. Spoetzl bought the brewery in 1915 and used these two recipes to make the brewery thrive.

Today, the Spoetzl Brewery is the sixth largest American specialty brewery, and produces Shiner Bock, the number-one selling bock beer in the country. What makes a bock beer different from other beers is in the way that it is brewed.

The historic brewery has worked hard to keep its history and heritage as the oldest independent brewery in Texas, while growing into a major player in the specialty beer industry.

John Hybner, Spoetzl brew master, said in a press release that even though

the brewery has increased production by over 600 percent in seven years, the brewery is dedicated to tradition.

"There is a sense of tradition throughout the brewery, especially in the way we brew our beer," Hybner said. "Even as we continue to grow, we still make it just one batch at a time to keep that old world flavor."

Texans can go to Shiner to see where Shiner Bock is made and to see how this melding of modern-brewing technology and old-world brewing techniques make the Spoetzl Brewery an American original.

Erlene Duke, public relations representative for the Spoetzl Brewery said the brewery is looking at a record number of visitors to tour the brewery this year.

SEE SHINER ON PAGE 4.



Excursions

'magination Station brings tale of heroic woman to B-CS

BY MARIUM MOHIUDDIN
The Battalion

"Ain't you boys ever rowed before? Here, gimme those oars. I'll show you how it's done."

The immortal words of the "Unsinkable" Molly Brown are still alive today thanks to the immense popularity of *Titanic*. She was the light of hope and kindness among the upper-class and a breath of fresh air proving that not all women were idle.

Molly Brown's life has been portrayed in movies, a television miniseries and a Broadway musical. Opening tonight at the 'Magination Station is the musical "The Unsinkable Molly Brown."

The musical chronicles the life of one of America's legends. Her story spans from her childhood in Hannibal, Mo., to Leadville, Mo., where she works in a tavern. This is where she meets and marries James Brown, who strikes it rich and moves the couple to Denver.

Being a wealthy but unpolished woman turns the snobby aristocracy against her. She experiences the pains of wanting but not being desired. However, the high-spirited Irish girl overcomes the odds and becomes a well-traveled, cultured American icon.

Her travels through Europe, and Asia cause her to become a passenger on the *Titanic* on her journey back home.

Randy Wilson, director of "The Unsinkable Molly Brown" and the artistic director of 'Magination Station, said each year, they open the season with a big musical. The success of the movie *Titanic* made the choice of this year's opening show much easier.

"I remember as a child watching the movie in junior high and just loving it," he said. "I love the music, and I love the spirit of the show. I have always wanted to do the show, and I have wondered why it was not revived. I thought if we did the musical, nobody would know who she is, but now everybody knows her."

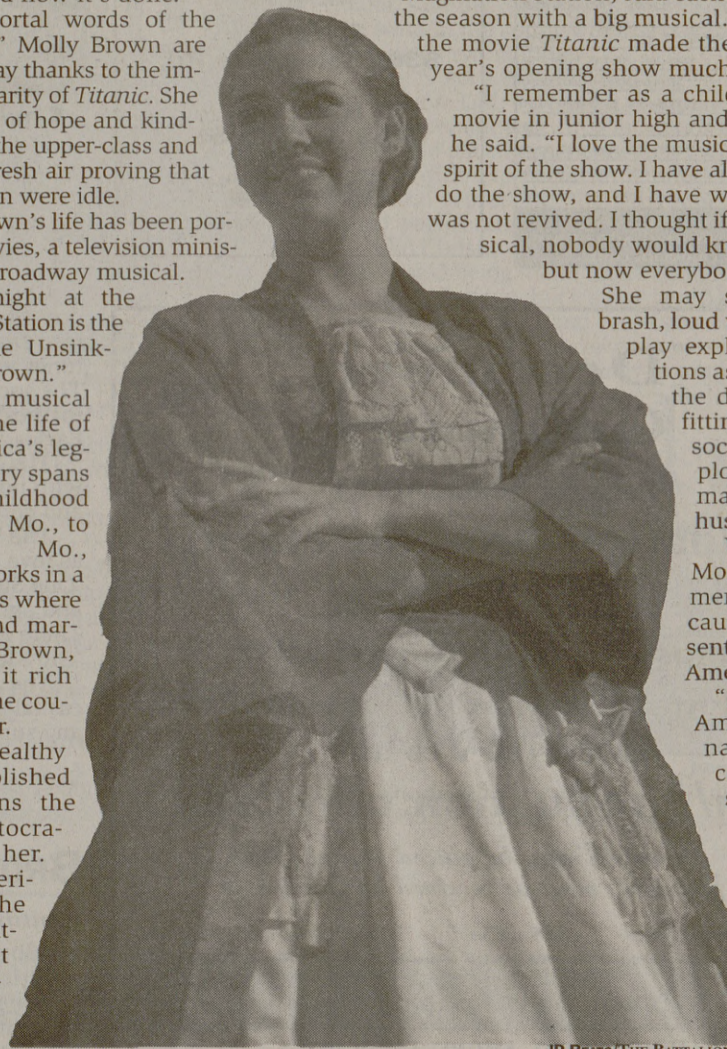
She may seem to be a brash, loud woman, but the play explores her emotions as she deals with the difficulty of not fitting into upper society. It also explores her romance with her husband.

Wilson said Molly Brown is remembered because she represents a piece of the American past.

"It is a slice of American history, naive Americana, set to some wonderful music," he said. "She symbolizes the last of the frontier spirit of America. She was an outspoken and very wealthy woman, but she showed

that you can be generous and open.

SEE BROWN ON PAGE 4.

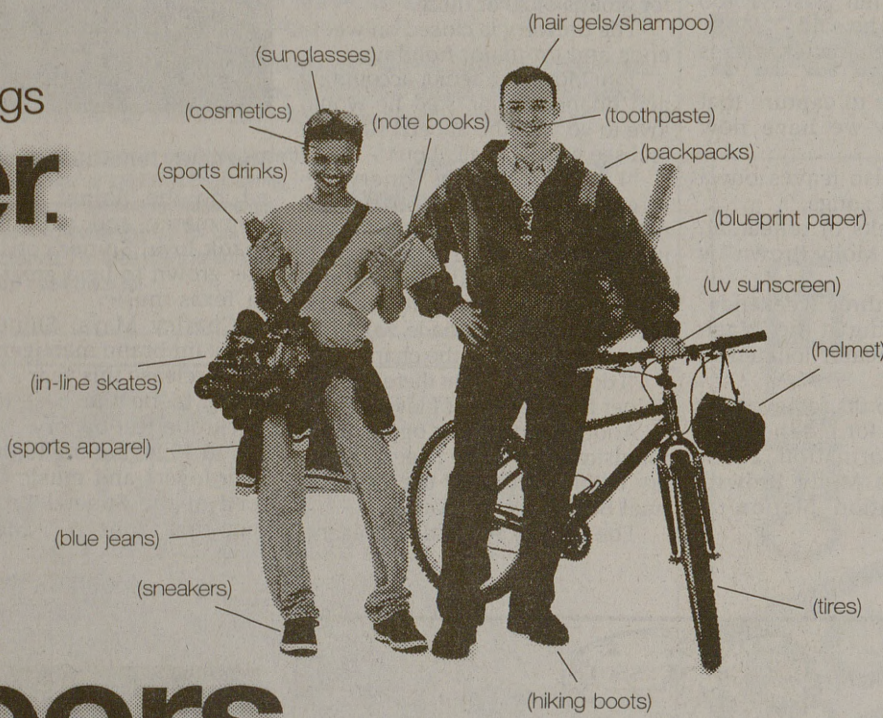


Joanna Bush plays Molly Tobin in 'Magination Station's "The Unsinkable Molly Brown." The musical runs weekends for the next three weeks.

JP BEATO/THE BATTALION

We make a lot of things better.

Especially careers.



We're BASF, the company that makes the products you buy better. Indigo that makes your blue jeans blue. Light absorbers that help your sunglasses protect your stare from the glare. Materials that give your tennis shoes more bounce to the ounce. Even the performance plastics that make your bicycle helmet hard on knocks. From chemicals and pharmaceuticals to fibers and colorants, BASF is with you everywhere you go. Now, it's your turn to go places with BASF. We make careers better, too.

Our Professional Development Program (PDP) was created especially for college grads like you. Designed to encourage career exploration, it also promotes the development of your technical and professional decision making skills. You'll have the opportunity to gain a complete understanding of BASF and apply your expertise to real-world assignments by completing rotations within the company. **We'll be on campus Oct. 6th - 8th, interviewing for opportunities in the Professional Development Program for Engineering. Contact your placement office to sign-up for an interview.**

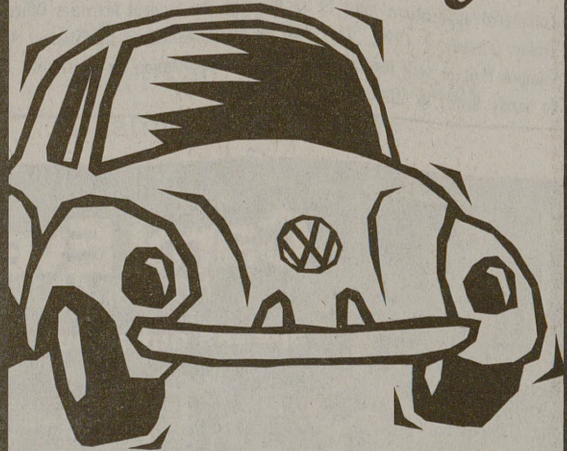
Stability. Career growth. High potential. Attractive benefits. BASF offers them all and much more. Visit our web site and find out all about us. www.basf.com We are an equal opportunity employer.

We make careers better, too.

BASF

Jason's deli

FREE Delivery



With an order of \$10 or more. Offer expires December 1, 1998.

We'll soon be accepting Aggie Bucks!

1404 Texas Ave. S.
764-2929
764-2712 FAX
www.jasonsdeli.com