

apes for
event

in Washington to
ut to be a good risk-
that will be good
ecutive director of
Network.
erative for research
they know about the
omen die of anything

into estrogen
ancer cells and
ells, preventing
growing and divid-
In 1994, the tri-
porarily suspended
congressional hea-
four uterine cancer
another study of
cer treatment us-
ifen. University of
surgeon Bernard F-
dinator of the pres-
also was investiga-
ports that he was a
dress research prob-
That did not
women from stam-
study.

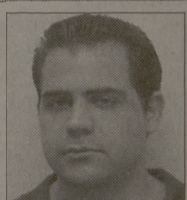
"I never consid-
ing out. My thou-
more like, 'Maybe
child's life and my
ther people's." Fen-
, of Newtown, Ind.
participants will
years.

are analyzing the
ns for using tam-
being developed,

an go to the 270
the study to find
oxifen or the place-
in tamoxifen, but if
ing to ask my phys-
use I really believe
ales, told the *Inqui-*

Reel CRITIQUE

Mercury Rising
Starring Bruce Willis and Alec Baldwin
Directed by Harold Becker
Playing at Hollywood 16
Rated R
Critique: B



TRAVIS IRBY
staff writer

Mercury Rising sizzles, delivering swift suspense backed up with solid acting.

The movie begins with a bank robbery gone bad and undercover FBI agent Art Jeffries (Bruce Willis) trying to end the situation peacefully.

upon himself to save the boy and Mercury Rising heats up. The film is a little different than one might expect from the typical Bruce Willis film. There are shoot 'em up scenes, but the movie is remarkably restrained, choosing to focus on the chase and challenge of Jeffries trying to understand the autistic Simon.

Unfortunately, it ends with two dead teenagers and Jeffries pulling a gun on his boss. Jeffries ends up stuck with surveillance duty for the rest of his career. Meanwhile, a supposedly unbreakable government super code, code-named Mercury, is broken by someone in Chicago. The someone happens to be a nine-year-old autistic boy named Simon (Miko Hughes). Lt. Nicholas Kudrow (Alec Baldwin), the man in charge of Mercury, decides the best way to deal with the situation is to kill Simon and his family, rather than fix the code. It is government at its finest, folks. The hit goes bad as Simon escapes the hired guns and ends up in the care of Jeffries. Jeffries take it

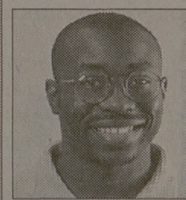


FBI Agent Art Jeffries (Bruce Willis) protects Simon (Miko Hughes), a nine-year-old autistic savant who inadvertently deciphers a top-secret government code.

PLEASE SEE **MERCURY** ON PAGE 4.

Reel CRITIQUE

Lost in Space
Starring Gary Oldman, William Hurt, Heather Graham and Matt LeBlanc
Directed by Stephen Hopkins
Playing at Hollywood 16
Rated PG-13
Critique: A



JAMES FRANCIS
aggiefLife editor

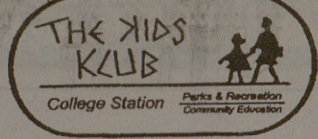
Nostalgia reigns supreme in this year's film version of the old television series "Lost in Space."

Thus the journey begins, and although it is a long and arduous one, it is well worth the time spent in movie theater seats to watch. William Hurt (of *Kiss of the Spider Woman* fame) plays John Robinson, father of Will, Penny and Judy (Heather Graham), and married to Maureen. As "the man with a dream" to help save Earth's resources, Hurt puts on a stoic performance, except for when his family is in danger. When that happens, he takes no time in making snap decisions to do whatever he can to protect them. Matt LeBlanc (one of six "Friends") makes his mark as Major Don West, the pilot assigned to navigate the family on their journey. LeBlanc, still recovering from his starring role in *Ed*, shows both seriousness and funny-face fancy in his devotion to the family (mostly Judy played by Graham) and in the trial to find a way home. And Oldman, what can be said of his performance? As usual, it is another great portrayal. Oldman mirrors the wacky mannerisms of the original Dr. Smith with a heightened devilish nature all his own. Moreover, there is a future representation of Dr. Smith in the film that takes the curds and whey (you have to see the film). *Lost in Space* delivers fast action, a good rehash of the original plot (with some of the old cast members) and a story all ages can enjoy. The only thing that matters is that *Lost in Space* beat *Titanic* this weekend. Whoop!

audiences on a wild ride of inter-galactic travel, discovery and the triumph of family over human deception. The film depicts the ill-fated journey of the Robinson family as they attempt to launch the Jupiter 2 (their spaceship) into hyperdrive. The plan is to send the family into the far reaches of space where they can discover resources for Earth, which, by the way, is slowly running out of suitable living conditions for humans. Another snag in the plan occurs in the time span it will take the family to return to Earth — 10 years. So, while the government and citizens of Earth are striving to complete a landmark space station, face rebel fighters and survive on fading resources, the Robinson family will be charting the stars. This would have been the ideal plan had the evil Dr. Smith (Gary Oldman) not interfered by sabotaging the spaceship's robot to destroy the ship and the family.

Need a Job For The 1998 Fall Semester?

- Are you a fun person?
- Do you enjoy working with kids?
- Looking for valuable work experience?
- Are you available Mon.-Fri., 3 p.m. to 6 p.m.?
- If you answered yes to any of these questions, we may have a job for you.



Applications are now being accepted for the Kids Klub After School Program at Central Park Office until April 14

For more information call:
THE KIDS KLUB 764-3486

LADIES & LORDS
"Bridal and Tuxedo"
Tux Rentals
Including Shoes & Vest
\$49.95
Open weeknights until 7 p.m.
AT THE TEXAS AVE. ENTRANCE TO A&M

4.0 & GO

Grades headed where they don't belong? There's still time. Don't get canned!

Question of the Week

Question: Which world-famous commentator proved you're better off dropping out of t.u.? (First 5 to call with answer get free review!) Answer appears Thursday. Last week's answer: Earthworms don't have ears or eyes. They just wiggle.

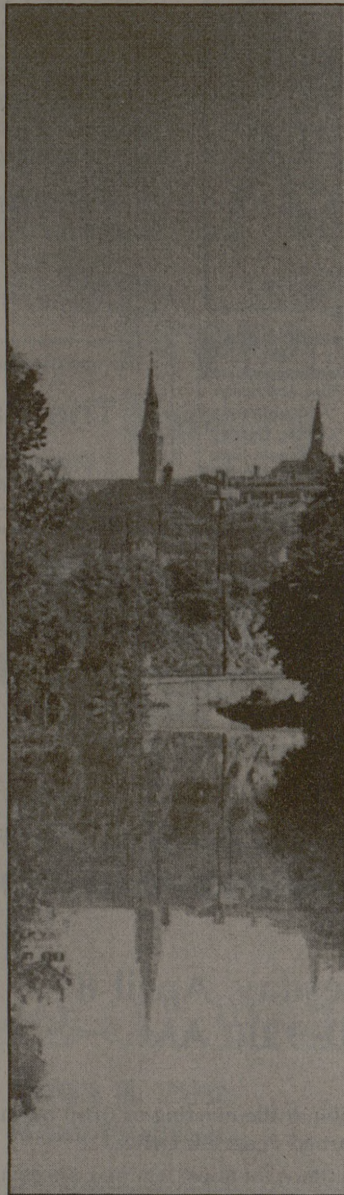
696-TUTOR (8886)

The week of April 5-April 9				
Accl 229/209	Part I Mon Apr 6 4pm-6pm or 6pm-8pm	Part II Tue Apr 7 4pm-6pm or 6pm-8pm	Part III Wed Apr 8 4pm-6pm	Part IV Wed Apr 8 8pm-10pm
Accl 230	Part I Mon Apr 6 8pm-10pm or 10pm-12am	Part II Tue Apr 7 8pm-10pm or 10pm-12am	Part III Wed Apr 8 6pm-8pm	Part IV Wed Apr 8 10pm-12am
Due to Good Friday 4.0 & Go will be closed Thursday, April 9. Please note dates and times of shaded blocks				
Bana 303 Anthony	Part I Mon Apr 6 7pm-10pm	Part II Tue Apr 7 7pm-10pm	Part III Wed Apr 8 7pm-10pm	
Bana 303 Buffa	Part I Sun Apr 5 7pm-10pm	Part II Mon Apr 6 10pm-1am	Part III Tue Apr 7 10pm-1am	
Biol 113	Part I Mon Apr 6 6pm-8pm	Part II Tue Apr 7 6pm-8pm	Part III Wed Apr 8 6pm-8pm	Part IV Tue Apr 14 6pm-8pm
Econ 311	Part I Sun Apr 5 6pm-9pm	Part II Wed Apr 8 9pm-12am	Next Week Biol 113 Finc 341 Math 141 Math 142	
Econ 322	Part I Mon Apr 6 9pm-12am	Part II Tue Apr 7 9pm-12am		
Finc 341	Part I Mon Apr 6 7pm-9pm	Part II Tue Apr 7 7pm-9pm	Part III Wed Apr 8 7pm-9pm	Part IV Tue Apr 14 7pm-9pm
Math 141	Part I Sun Apr 5 5pm-7pm	Part II Mon Apr 6 5pm-7pm	Part III Tue Apr 7 5pm-7pm	Part IV Wed Apr 8 5pm-7pm
Mgmt 211	Part I Sun Apr 5 5pm-7pm 7pm-9pm 9pm-11pm 11pm-1am	Part II Mon Apr 6 5pm-7pm 7pm-9pm 9pm-11pm 11pm-1am	Mgmt Tickets Go on Sale Wed Apr 1 6pm Thu Apr 2 6pm-8pm Sun Apr 5 3pm	

Tickets go on sale Sunday 3 p.m.
4.0 & Go is located on the corner of EW Pkwy and Tz Ave, behind KFC next to Lask's

Look for our ads in the Batt on Mondays & Thursdays

TEXAS A&M UNIVERSITY
STUDENT ENHANCEMENT
Dance Date
Formal Wear
Breakhouse
Flowers
Flowers
Flowers



Georgetown University's
Summer Sessions, 1998

- Pre Session: May 18 - June 12
 - First Session: June 8 - July 10
 - Second Session: July 13 - August 14
- 8 Week Cross Session: June 8 - July 31

Choose from over 300 Undergraduate and Graduate credit-bearing courses that will fit into your college curriculum and enhance your summer learning experience. Inquire about our reduced tuition rates for summer.

Main Campus Course Offerings in:

- Humanities
- Sciences
- Business
- International Affairs
- Languages
- High School Programs
- English as a Foreign Language
- Programs Abroad

Please send me the summer school catalogue:
Name _____
Address _____
City _____
State _____ Zip _____
Phone _____

Georgetown University
306 Intercultural Center
Washington, DC 20057-1008
Tel: (202) 687-5942 Fax: (202) 687-8954
E-mail: ssce@gunet.georgetown.edu
Website: <http://iguweb.georgetown.edu/ssce>

An affirmative action/ equal opportunity institution