

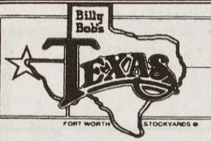
50% OFF
 Hundreds of
SPECIAL PURCHASE
BRIDAL GOWNS & VEILS
 SALE ENDS OCTOBER 18, 1997

LADIES & LORDS

At the Texas Ave. Entrance of A&M
 Open Weeknights until 7 p.m., Saturday until 5 p.m.

764-8289

*50% Off MFG. Price/In stock Items Only



Billy Bob's Texas

The World's Largest Honky Tonk
 In the Historic Fort Worth Stockyards

WELCOME AGGIES!! When you're in North Texas...
 Visit World Famous Billy Bob's Texas

Friday, September 26 - JACK INGRAM & Charlie Robinson
 Saturday, September 27 - BRYAN WHITE
 November 21 - ROBERT EARL KEEN

Open Daily * Families Welcome * Real Bull Riding!

Billy Bob's Casino Arcade
 Slot Machines, Poker, & Skill Games (tokens only)

Wednesday nights in October - free admission with a College ID
 compliments of Copenhagen Tough Company

817-624-7117 www.billybobstexas.com

Relive a Legend!

Legends of long ago come alive every fall in New Market Village. Knights in combat, Merlin the Magician, Maid Marion in search of Robin Hood and hundreds of others create a magical setting of merriment and entertainment for the entire family!

- One-of-a-Kind Arts & Crafts!
- Fine Cuisines!
- Games & Rides!
- Stage Shows!
- Music & Dancing!



Opening Day Celebrations!
 King Henry VIII's special guest will be **RUDY T!**
 Plus, the first 10,000 visitors will receive a **FREE Rudy T Poster!**

Early arrivals will be presented with a **Discount Coupon Book** with 2-for-1 offers!
 And, you may even win a trip to London, courtesy of British Airways.

Texas Renaissance Festival

Saturdays & Sundays
 October 4 - November 16

SAVE \$5.00 OFF OPENING WEEKEND when you purchase **DISCOUNT TICKETS at LITTLE CAESARS PIZZA**

Gate Admission: Adult \$14.95 • Child (5-12) \$6.95 • 4 & Under Free • FREE PARKING & CAMPING
 Festival is located 50 miles NW of Houston on FM 1774, 6 miles south of HWY 105 in Plantersville

FESTIVAL WEATHER HOTLINE: Toll Free 1-888-329-1372

Check the forecast & weekend events Wednesday through Sunday

1-800-458-3435 for more information or directions www.texrenfest.com

Doctors scramble to replace obesity drugs

(AP) — With two weeks left on his "fen-phen" prescription, Christopher Burns has shed 60 pounds, bringing his weight under 200 for the first time since he was 15.

Burns just hopes to keep the weight off when his prescription runs out.

The 28-year-old Californian was one of more than 200 exasperated patients to call Dr. Dennis Tison within 24 hours after Redux and fenfluramine — the "fen" in fen-phen —

were pulled off the market Monday at the request of the Food and Drug Administration because the drugs may cause deadly heart valve defects.

Doctors like Tison and the diet centers that have made a business of prescribing the obesity drugs are scrambling for alternatives in a frenzy of quickly arranged appointments.

As the \$40 billion diet industry re-groups, furious patients feel doubly wounded — first by the news that

these drugs may cause fatal ailments, then by the recall of something that has done what diets often couldn't do.

"If the FDA is pulling the drug now, did they not test the drug right the first time? And if that's true, we're going to have to question the approval of other drugs," said Burns, a state legislative aide in Sacramento. "Where were they when these drugs were introduced before?"

Burns was drawn to fen-phen after watching Verna King, who works

a few offices away in the California Capitol, go from 235 pounds to 150 on the drugs. After quitting last month, she has gained 100 pounds and is struggling to hold her current weight.

"This is a combination of things that can directly help people who have been yo-yo dieting all of their lives," said Ms. King, 56. "The work is done: I lost the weight. The hard work is ahead of me: keep it off."

Peanut allergy passed on during organ transplant

BOSTON (AP) — A man who received a new liver and kidney in an organ transplant also got something he didn't want — an allergy to peanuts.

French doctors described the unusual case, which occurred eight years ago, in Thursday's issue of the New England Journal of medicine.

A 22-year-old man who knew he was allergic to peanuts ate them by mistake when he had Chinese food with satay sauce, which contains peanuts. He fell into a coma and died.

Doctors gave his liver and right kidney to a 35-year-old man and his

pancreas and left kidney to a 27-year-old woman. Neither was told of the cause of the organ donor's death.

Three months later, the man suffered a skin rash and difficulty breathing after eating peanuts. After concluding he had a newly developed allergy, the doctors fed peanuts to the woman under close medical supervision, but she showed no ill effects.

Doctors are unsure why one patient got the allergy and the other did not. They speculated that blood cells primed to recognize peanuts as foreign were passed along in the transplanted liver.

Federal panel calls for approval of narcotic lollipop for cancer pain

GAITHERSBURG, Md. (AP) — A raspberry-flavored lollipop loaded with narcotic pain-killer for treatment of cancer patients was recommended for federal approval Wednesday, despite concerns about accidental poisoning of children.

A Food and Drug Administration advisory panel voted unanimously that the benefit to cancer patients from the pain-killing candy far outweighed the risk of young children being harmed.

"Some kid, somewhere, somehow is going to do this (eat the lollipop)," said Suzanna Brown, a Portland, Ore., nurse and a mem-

ber of the panel. "But do we do this benefit to cancer patients that reason?"

FDA approval is required before the lollipop can be sold. The agency generally follows the recommendations of advisory committees.

The lollipop, called Actiq, is manufactured by Anesta Corp., Salt Lake City and marketed in partnership with Abbott Laboratories.

The drug is actually a sugar-based lozenge on a stick. It is loaded with fentanyl citrate, a narcotic commonly used in other forms to treat cancer pain.

ATutoring 260-2660
 725B University Drive

STILL ONLY \$4/HR.

Visit our web site:

<http://www.howdyags.com>

SCIENCE

		MON Sep 22	TUE Sep 23	WED Sep 24	THU Sep 25
CHEM 101	3-5 PM	CH 1, 2	CH 2, 3	CH 3, 4	CH 5 + PRAC EXAM
CHEM 102	5-7 PM	CH 15A	CH 15B	CH 16A	CH 16B, 17
CHEM 101	7-9 PM	CH 1, 2	CH 2, 3	CH 3, 4	CH 5 + PRAC EXAM
CHEM 107	9-11 PM	CH 1, 2	CH 2, 3	CH 4	CH 5 + PRAC EXAM
PHYS 218	11 PM-1 AM	CH 1, 2	CH 2, 3	CH 4	CH 5 + PRAC EXAM
PHYS 208	9-11 PM	CH 22	CH 23	CH 24	CH 25
PHYS 208	11 PM-1 AM	CH 22	CH 23	CH 24	CH 25

BUSINESS

		SUN Sep 21	MON Sep 22	TUE Sep 23	WED Sep 24	THU Sep 25
FINC 341	5-8 PM	PART 1	PART 2	PART 3		
ACCT 229	8-10 PM		PART 1	PART 2	PART 3	PART 4
BANA 303	10-12 PM			PART 1	PART 2	

CHECK THE WEB SITE FOR THE MOST UP TO DATE INFORMATION!!

FREUDIAN slip
 improvisational comedy

Free Admission
 for those who do not attend.

Friday and Saturday,
 Sept. 19 and 20
 10 p.m. Dixie Theatre (doors open at 9 p.m.)

Tickets are \$6 available in advance at Rother's Bookstore, Marooned Records and DoubleQuick Food Stores

<http://http.tamu.edu:8000/~fslip>

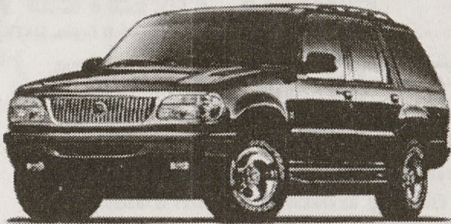


FORD MOTOR COMPANY INFORMATION SESSION

Discover the vast opportunities available with a global automotive organization.

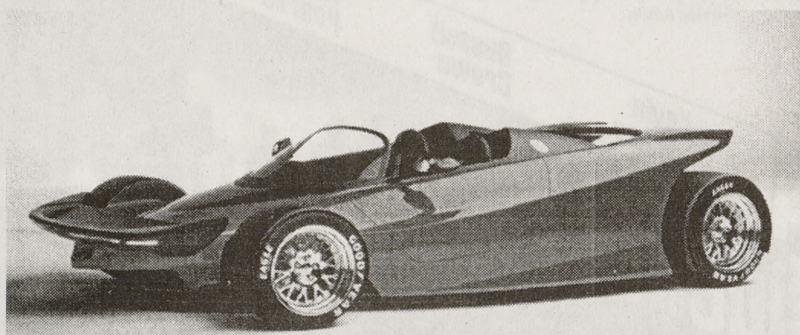
Information Session:

- * TONIGHT (9/18)
- * 6:30-8:30pm
- * 301 MSC
- * Food & Beverages



Full-time & internship positions available in:

- * Marketing & Sales
- * Purchasing
- * Information Technology
- * Product Development
- * CAE

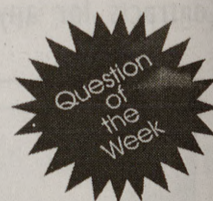


Interviews October 15 & 16. Resumes accepted through the Career Center September 15-24.



Start off on the right track with

4.0 & GO



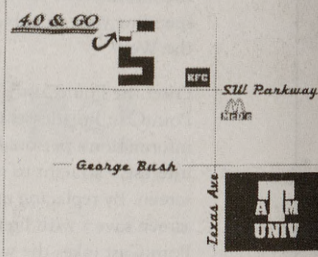
Question of the Week

Question:
 Which color is the most frequent M&M?
 (First 5 to call with answer get free review!)

(Barbie's last name is Roberts.)

Answer appears Monday

846-TUTOR (8886)



Look for our ads in the Batt on Mondays & Thursdays

The week of September 21-25

Acct	Part I	Part II	Part III	Part IV
Acct 229 Cassidy Joiner	Mon Sept 22 8pm-10pm	Tue Sept 23 8pm-10pm	Wed Sept 24 8pm-10pm	Thu Sept 25 8pm-10pm
Acct 229 Shomaker	Mon Sept 21 5pm-8pm	Mon Sept 22 5pm-8pm	Tue Sept 23 5pm-7pm	
Acct 229 Billy's Video	Mon Sept 22 10pm-1am	Tue Sept 23 10pm-1am		
Acct 315	Part I Wed Sept 24 5pm-8pm	Part II Thu Sept 25 5pm-8pm		
Acct 327	Part I Wed Sept 24 10pm-12am	Part II Thu Sept 25 10pm-12am		
Bana 303	Part I Mon Sept 22 9pm-11pm	Part II Tue Sept 23 9pm-11pm	Part III Wed Sept 24 9pm-11pm	
Biol 113	Part I Mon Sept 22 7pm-9pm	Part II Tue Sept 23 7pm-9pm	Part III Wed Sept 24 7pm-9pm	
Econ 202	Part I Wed Sept 24 5pm-8pm	Part II Thu Sept 25 5pm-8pm		
Econ 203	Part I Mon Sept 22 5pm-8pm	Part II Tue Sept 23 5pm-8pm		
Finc 341	Part I Sun Sept 21 8pm-11pm	Part II Mon Sept 22 8pm-11pm	Part III Tue Sept 23 8pm-10pm	
Math 141	Part I Sun Sept 21 5pm-7pm	Part II Mon Sept 22 5pm-7pm	Part III Tue Sept 23 5pm-7pm	Part IV Wed Sept 24 5pm-7pm
Math 151	Part I Mon Sept 22 11pm-1am	Part II Tue Sept 23 11pm-1am	Part III Wed Sept 24 11pm-1am	Part IV Thu Sept 25 11pm-1am
Math 152	Part I Mon Sept 22 7pm-9pm	Part II Tue Sept 23 7pm-9pm	Part III Wed Sept 24 7pm-9pm	Part IV Thu Sept 25 7pm-9pm
Mgmt 211	Crunch Sun Sept 21 3pm-6pm	Crunch Sun Sept 21 6pm-9pm		

Tickets Go On Sale Sunday at 1:00 p.m. Ask us about our season passes for the semester! Located next to Kentucky Fried Chicken and LaC's Furniture across from Kroger's and McDonald's on Southwest Parkway and Texas Ave. Call 846-TUTOR (846-8886)

Thurs

Lo
 las



NOTI

I could s

Footba
 west Lo
 In fact, I w
 could go to
 try and fin
 bad night
 The Rag
 bad batch
 ricanes on
 in a night
 never end
 and right c

But as a
 Texas' neig
 true hell o
 of the ever
 sink in. Yo
 further mo

The Agg
 ing-after s
 they get a
 could have
 ghosts.

Enjoy i
 you

How big
 season's vic
 USL? Not o
 the first tim
 school had
 in a ranke
 ment (A&M
 25 at the ti
 also provid
 picture for
 dia guide
 The ba

"R

A&

Foo

Drav

Stop

roun

Hotel

4 tick

PRICES, I

FR

T

Shir

12p

ADVERTISED ITEM

when reflecting it