

See the three most beautiful women in all of ballet.

Giselle, Carmen and Paquita performed by the Moscow Festival Ballet



Legendary dancer Sergei Radchenko's vision has brought together leading dancers from the famed Bolshoi and Kirov Ballet companies to form the Moscow Festival Ballet. This exciting independent company will be staging all-new, full-length productions of the timeless classics "Giselle," "Carmen" and "Paquita." With grace and beauty to spare, this remarkable assemblage of talent is sure to astound even the most ardent ballet aficionado and make fans out of the uninitiated. *Don't miss it!*

Rudder Auditorium
February 13, 14 & 15, 1997 8:00 p.m.
For tickets call 845-1234

MSC
OPAS
Opera & Performance Arts Society
http://opas.tamu.edu

Persons with disabilities please call 845-8903 to inform us of your special needs. We request notification three (3) working days prior to the event to enable us to assist you to the best of our ability. Now accepting Aggie Bucks

► Art appreciation

Glass evokes chocolate memories

Columnist



Brandon Truitt
Sophomore English
major

When I was 7 years old, the corner gas station by my house had a special that lasted only a few weeks: With the purchase of eight gallons of gas, its customers would receive a free drinking glass.

My mom ended up with the entire glass set.

The thing I remember most about those glasses is the little curvish "L" printed on the bottom that even then I knew was the insignia for Libbey Glass.

I always enjoyed seeing the letter pop up out of the brown mess at the bottom of my chocolate milk when I was finished.

I have had my share of chocolate milk since I've been at Texas A&M, but try as I may, I still can't find that little curvish "L" at the bottom of any cup at Sbis.

So naturally, I was excited when I heard about the touring Libbey Glass exhibit in the MSC Forsyth Center Galleries.

I thought I might swing by and have a glass of the good stuff, just for old times' sake, but the exhibit wasn't quite what I expected.

I walked into the Forsyth Gallery with an unopened gallon of whole milk (not that wimpy stuff) in one hand and my good old Nestle's Quik in the other.

Unfortunately, despite much pleading on my part, the security guard at the front desk refused to unlock the display cases the glasses were in; he even insisted on holding my milk and Quik so I could "look around."

I almost told him where he could put that gallon of milk, but he was pretty big and despite all the milk I drank as a child, I still haven't grown into one of those 6-foot hard-bodies in the milk commercials.

When I finally started to look around, I realized that these weren't actually glasses, they were works of art.

I learned the company started in 1818 in East Cambridge, Mass., as the New England Glass Company.

In 1888, the company moved to Toledo, Ohio to take advantage of cheaper natural gas costs, but their big break came at the 1893

Columbian Expedition, better known as the 1893 Chicago World's Fair.

The Libbey Glass Company built their new factory inside the fairgrounds.

At first, the Chicago Libbey Plant made a name for itself selling souvenirs and Fair memorabilia, but it went on to manufacture everyday glassware well — this is how the company became a success.

Libbey relies on the sales of this glassware, through the gas station or otherwise, for its main source of income, but periodically the company has manufactured a small amount of end art glass.

The exhibit in the MSC Forsyth Gallery is art glass made by the Libbey Company between 1893 and 1942 to commemorate the Chicago World's Fair in 1893 and the New York World's Fair in 1939.

Most of the pieces in the collection are unique and were handmade by nameless glass blowers and workers in the Libbey company.

See TRUITT, Page 3

TRAINS

Continued from Page 3

"In 1989, there was a vote on a 'low track' plan — a plan to put the track underground from the town of Wellborn to Villa Maria Road," Basinger said. "The state had already put in money — all the voters had to do was approve it."

But voters did not approve the referendum, he said. It was defeated, leaving students and community residents with a myriad of safety concerns.

"The main issue now is safety in an emergency," Basinger said. "What if there's a fire truck, an ambulance that has to get through?"

Tarrant agreed there is a safety issue to consider.

"It's endangering people's lives," she said.

The safety issue was forced last year when A&M student Go Shibata was struck by a train and killed. Shibata's death was ruled an accident, police said.

The death shocked the A&M campus, but incidents like it are by no means new. Texas leads the nation in the number of highway-rail

grade crossing deaths, Fischer said.

"The campus railroad crossings at Bush Drive, Joe Routh Boulevard, and Old Main already have the highest available level of safety warning equipment in the form of flashing lights and automatic gates," Fischer said.

"Each pedestrian has a responsibility to heed the warning devices at the crossings to protect their own safety. Most tragedies at railroad crossings are preventable."

Basinger said for the most part, the railroads have been safe.

"With 40,000 students, it's kind of surprising accidents don't happen more often," he said.

The fact remains that none of this was a problem 125 years ago, when the A&M College of Texas was fighting for its life, and no one anticipated that the school might become a university spanning acres, even reaching beyond the railroad tracks upon which it was built.

Students today see the tracks that gave birth to this community as more of a nuisance than anything. And some, like junior accounting major Clay Collier, just do not want to see it anymore.

"I'm sure there are safety issues,

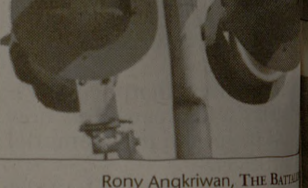
but 40,000 college-educated people are going to be careful around a train," Collier said. "Safety issues may not necessitate tracks being moved, but 40,000 people trying to get from point A to point B does."

Another theme in the collection is the curvish "L" I was made me feel some about the confis-

It would not have the same drinking experience the little curvish "L" my milk before it headed back to m-

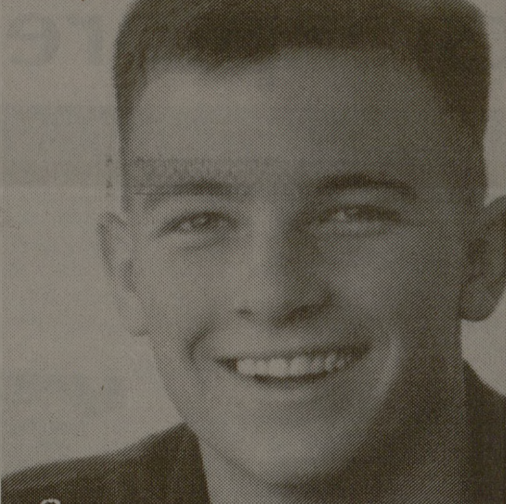
I think I will get a little more time in the Glass Company time I'm going to and Nestle's Quik

The Libbey Glass exhibit is on display in the MSC Forsyth Center Galleries through February 15.



Rony Angkriwan, The Battalion

First American Bank has what students want. (you want it? you got it.)



I want a checking account

And not just any checking account. I want it here, in town, and not a million miles away. I'm going to A&M, the best #*%@ school in the country.

I am the 12th Man!

So I want the 12th Man Account.

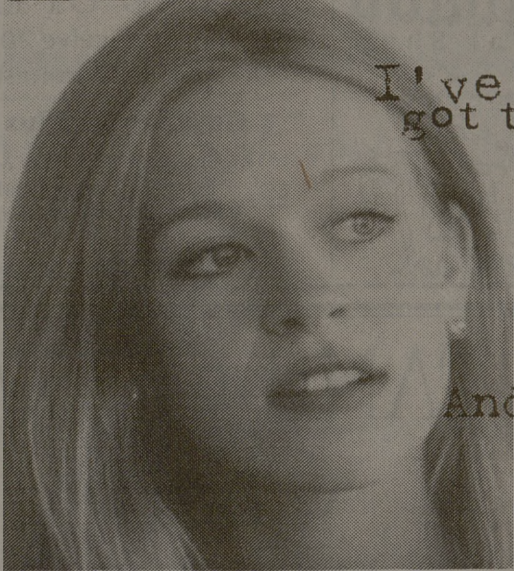
I want my bank close. I mean close like right across the street from campus.

And just because I'm on campus a lot, doesn't mean I'll always be on campus.

I've got things to do.

So I want more banks all over town — at least eight. And if you can't keep up with my hours, give me ATMs — at least 10.

And I want a bank that can get me a student loan when I need it. No hassles. No run-arounds. Quick. Simple. Painless.



First American Bank

the 12th Man checking account, eight convenient locations, 10 ATMs, the University Center right across the street from campus, and lender of various student loans

Visit us on the Internet at our home page — <http://www.first-american-bank.com>



FIRST American BANK
Aggie Owned. Aggie Strong. Aggie Proud.
First American Bank, SSB

Member FDIC

SPRING BREAK '97

Cancun from \$349
Acapulco from \$399
plus tax

Holiday Express
21st Year 800-235-TRIP

PROFITABLE NUMBER! **845-0569** THE BATTALION CLASSIFIEDS

Chelsea Street Pub & Grill
POST OAK MALL
693-6429

Mon-Sat
9pm-No Cover
Rock and roll, a little country and a lot of comedy!

REED BOYD

PIERCE BROSNAN LINDA HAMILTON

A ROGER DONALDSON FILM

DANTE'S PEAK

UNIVERSAL PICTURES PRESENTS A PACIFIC WESTERN PRODUCTION PIERCE BROSNAN LINDA HAMILTON "DANTE'S PEAK" CHARLES HALLAHAN
MUSIC BY JOHN FRIZZELL THEME BY JAMES NEWTON HOWARD EXECUTIVE PRODUCER ILONA HERZBERG WRITTEN BY LESLIE BOHEM PRODUCED BY GALE ANNE HURD JOSEPH M. SINCLAIR
PG-13 PARENTS STRONGLY CAUTIONED
SOUNDTRACK ON VARESE SARABANDE DIRECTED BY ROGER DONALDSON A UNIVERSAL PICTURE

EXPLODING FEBRUARY 7TH
www.dantespeak.com