

## WEEKEND PREVIEW

FRIDAY, SEPT. 20

**Sloppy Joe**, an '80s funk and trash disco band from Waco, is playing at The Tap.

**Two Paces West**, a folk rock band, is playing at Sweet Eugene's House of Java.

**Bobby Hall & the Ice Cold Blues Band** is playing at Fitzwilly's.

**Ruthie Foster**, a rhythm & blues artist, is playing at the 3rd Floor Cantina.

The Dixie Theatre is presenting the **Killer Bees**, a reggae band from Austin.

**Linus**, a rock band, is playing at the Cow Hop.

Chelsea Street Pub & Grill is hosting rock cover act, **Rocky Richardson**.

The MSC film society is showing **Mystery Science 3000: the movie** at 7 p.m. and 9:30 p.m. in Rudder Theatre.

Area event: **the Smokin' Armadillos**, a country band, is playing at the Washington County Fair in Brenham. Call (409) 836-4112 for information.

**Robert Earl Keen** is playing at Wolf Pen Creek Amphitheater. The gates open at 7 p.m., and the show will end in time for fans to go to midnight yell practice.

SATURDAY, SEPT. 21

**Mexico Viejo**, a Tejano band, is playing at Sweet Eugene's House of Java.

**Sneaky Pete**, a sing-along and novelty act, is playing at Fitzwilly's.

3rd Floor Cantina is hosting **Texas Twisters**, a country & western band.

**Dah-veed**, a rock band from Austin, with opening band **Rhythm Masters**, is playing at the Dixie Theatre.

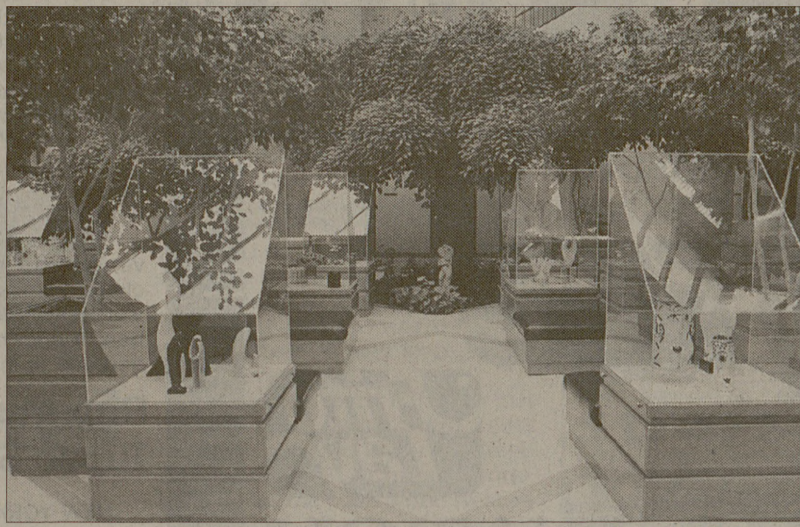
**Lewis**, a rock band from College Station, is playing at the Cow Hop.

Chelsea Street Pub & Grill is hosting rock cover act **Rocky Richardson**.

**Bobby Hall & the Ice Cold Blues Band** is playing at the Brazos Brewing Company.

The MSC Film Society is showing **The Last Supper** at 9:30 p.m. in the Rudder Theatre.

**Dr. Henry Dethloff** is signing copies of his new book, *Texas A&M University: A Pictorial History 1876-1996* at the College Station Hastings at 1 p.m.



Pat James, THE BATTALION

The Benz School of Floral Art is in the lobby of the Horticulture Forest Science Building on West Campus.

BY KIMBER HUFF  
THE BATTALION

Picture a factory that makes household products like disposable silverware and the cheap trash can you keep under your desk.

As unmolded liquid is being formed into what will soon be a new laundry basket, a stringy waste material that has an uncanny resemblance to an uncooked hamburger is discarded.

Art takes many forms.

This is art.

These bits of plastic waste are on display at The Benz School of Floral Art in the lobby of the Horticulture Forest Science Building on West Campus. The gallery was founded in 1945 by M. "Buddy" Benz, Class of '32, who graduated with a degree in landscaping art. Benz gained worldwide fame in the floral design field for his theories and books.

Benz, an avid collector of floral art, willed his entire estate, including the Benz School of Floral Art and a large floral art collection, to the University when he died in 1980.

At this time, the University built the Horticultural Forest Science Building, and designated the lobby as a gallery to house items from Benz's floral art collection.

Benz acquired this collection during his travels throughout the U.S. and the world.

Jim Johnson, senior lecturer in the Horticultural Sciences Department and director of the Benz Gallery of Floral Art, said the collection contains over 800 items, including a 450-year-old Nagaire floral arrangement holder, a precious flower holder that Japanese emperor Hiro Hito gave to Benz, and stirrups from Samari suits of armor that soldiers filled with flowers to inspire them during daily meditations.

"Every object in this collection could be incorporated with flowers in some design," Johnson said.

In order to expose people to the entire collection, pieces in the display cases are changed bi-monthly.

## THE MANY FORMS OF

# Art

The Benz School of Floral Art on West Campus combines form and function in a gallery of eclectic treasures.

Other displays include Texan art, post-modern art and pop art. Artifacts from around the world are also exhibited. Some of these artifacts include miniature cast masks from Mexican pyramids, a Chinese porcelain pillow, silver fruit that was given to Brazilian ranch hands as rewards, a pair of wooden shoes from Holland and a rose water holder used by an African tribe for washing hands after eating.

Objects from the Victorian era are also on display — a "waste bowl" that held leftover soup and coffee were dumped at the conclusion of a meal, and several tussie mussies (objects made of decorative gold or silver which were used by Victorian ladies to carry bouquets of flowers in while dancing). Another display consists of several free-form Madonnas, while a final display includes gold orchids cast from live orchids in Benz's greenhouse.

Johnson said the gallery has another purpose besides housing art. "It was designed to allow for special teaching needs as well as to be a nice public space," Johnson said.



Pat James, THE BATTALION

A painted porcelain mask on display.

Johnson said the gallery has another purpose besides housing art. "It was designed to allow for special teaching needs as well as to be a nice public space," Johnson said.

Johnson said the gallery has another purpose besides housing art. "It was designed to allow for special teaching needs as well as to be a nice public space," Johnson said.

Johnson said the gallery has another purpose besides housing art. "It was designed to allow for special teaching needs as well as to be a nice public space," Johnson said.

See **BENZ**, Page 4

# Tori Amos

## Dew Drop Inn Tour '96

with special guest Josh Clayton-Felt

### MONDAY, OCTOBER 28

### RUDDER AUDITORIUM

Tickets at Foley's, Randalls and the MSC Box Office or charge by phone 409-268-0414

Produced by MSC Town Hall and Pace Concerts

Tickets on SALE SAT. 10am

Persons with disabilities please call 845-1515 to inform us of your special needs. We request notification three (3) working days prior to the event to enable us to assist you to the best of our abilities.

## SPEED RACER

USA School of Defensive Driving

Got a Ticket?  
Need an Insurance Discount?  
SIGN UP TODAY!

- The first light after TCA cable, take a right
- The lowest price the state will allow \$25.00 per 6 hour class
- Day classes available on Friday upon request
- 4500 Carter Creek Pkwy. Suite 203  
Bryan, TX 77802  
Mon - Tues 6-9 p.m.  
Weds - Thurs 6-9 p.m.  
Saturday 9 a.m. - 3:30 p.m.

For more information, call 409-846-7415

## Grand Opening

### University MediClinic

A Subsidiary of American Health Choice Inc.

Merlin D. Lugo, M.D., M.P.H.  
minor emergency, auto accidents,  
worker's comp, acute care

Caring for the entire family

**\$10 OFF Initial Visit**  
(Some Restrictions Apply)

**School Exams or Physicals for \$25**  
(Some Restrictions Apply)  
(Does not include blood work or U.A.'s)

Conveniently located @ 413 S. Texas Ave.  
(Corner of Texas & University)

Mon & Thurs	9 a.m. - 7 p.m.	
Weds	9 a.m. - 12 p.m.	<b>260-1234</b>
Tues & Fri	8 a.m. - 6 p.m.	
Sat	9 a.m. - 12 p.m.	No Appt. Necessary