

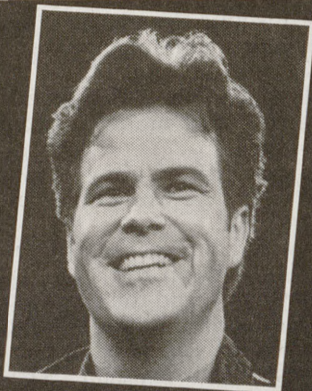
Mathematics Department Weekly Review Sessions

Review sessions for
MATH 131, 141, 142, 166 and 151
will be given by experienced assistants according to the following schedule:

MATH 131	Thursdays	ZACH 203	7:00-9:00 pm
MATH 141	Thursdays	BLOC 102	7:00-9:00 pm
MATH 142	Wednesdays	HELD 111	7:15-9:15 pm
MATH 166	Thursdays	HELD 111	7:00-9:00 pm
MATH 151	Thursdays	BLOC 158	7:00-9:00 pm

For more information, check out the Math Dept. home page at
<http://www.math.tamu.edu/> (then click on Help Session)

ROBERT EARL KEEN



FORMER STUDENT RETURNS!

**BIG
TV
KICKOFF**

**Friday
September 20
Pre - Yell Practice**

College
Station
One-Night
Event



Cory Morrow

BIG CONFERENCE • BIG CONCERT

Get Your
Tickets
NOW at:

WOLF PEN CREEK AMPHITHEATER

MSC BOX OFFICE ROTHERS BOOKSTORE MAROONED RECORDS

or by phone: 1-800-333-7188. Phone orders subject to change
Brought to you by: Dickson Productions & Popular Talent

Garcia's

If you can't find a
date, at least you'll
have a place to set
your jacket.

Three for the
price of one and
a half.

**Hey big
spender. Get
2-for-1 season
tickets.**

Buy a student ticket in the balcony and
bring your imaginary friend for free. But
hurry, 2-for-1 tickets are only available
while they last.*



Tickets are on sale at the MSC Box Office-TAMU, or
charge by phone at 845-1234.

*Must be a Texas A&M student with valid I.D. and fee slip reflecting
full-time status. Tickets available in upper balcony only.

<http://opas.tamu.edu> Now accepting Aggie Bucks™

Persons with disabilities please call 845-8903 to inform us of your special needs. We request notification three (3)
working days prior to the event to enable us to assist you to the best of our ability.

THE BATTALION TOONS

Thursday • September 12

Ewe Hall

By JED



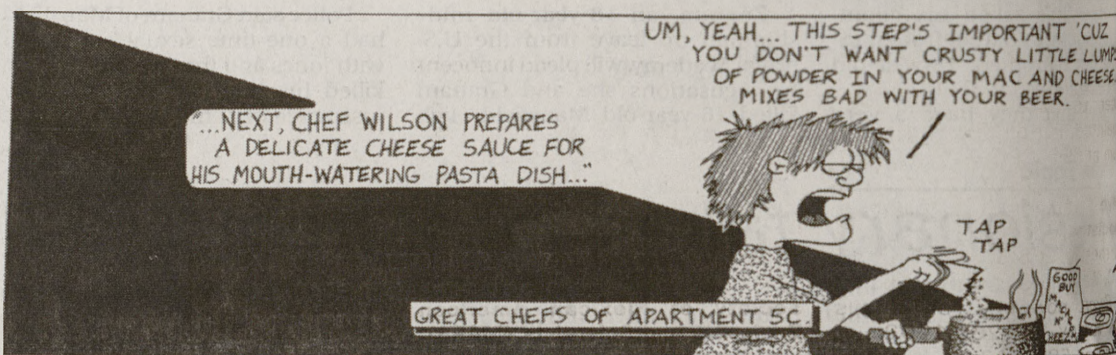
Peeps

By Michael

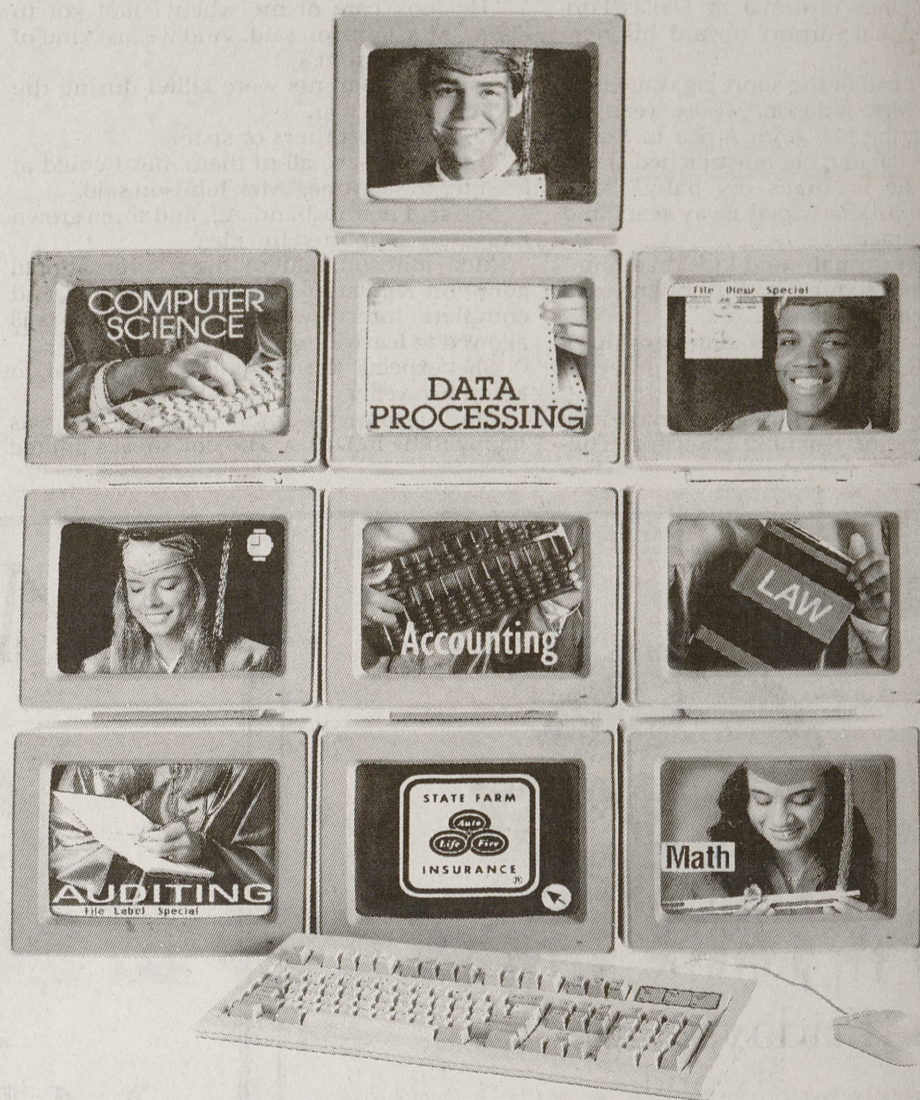


Sketch

By Quatre



If you're into computer sciences, data processing, accounting,
auditing, math or law...



get in touch with State Farm.

Our career opportunities are many and varied for qualified grads. If you're selected, you'll enjoy
the advantages of working with a respected leader in the insurance industry. Expert training. State-
of-the-art equipment. Excellent pay and benefits. Plenty of room to grow. And you'll enjoy the
Bloomington, Illinois, too. It's a thriving community with the social, cultural and recreational activities
afforded by two universities.

Contact your Placement Director, or write Mary Holman, Assistant Director Home Office
Personnel Relations, One State Farm Plaza, Bloomington, Illinois 61710.

State Farm Insurance Companies • Home Offices: Bloomington, Illinois • An Equal Opportunity Employer