

# Texas Rangers break silence, denounce critics

**Ranger chief Maurice Cook denies discrimination charges.**

DALLAS (AP) — After weeks of silence, angry Texas Rangers have struck back, disputing civil rights complaints and denouncing news reports critical of their leadership.

They attacked charges of sexual harassment and discrimination by two female officers as largely "sour grapes," branded an anonymous letter a "cowardly act" and labeled news stories "unfair and disruptive."

Eight veteran Rangers denied last week that the elite crime-fighting force suffers leadership and morale problems. All defended Ranger chief Maurice Cook.

In a unique but impromptu session, Cook, his Dallas com-

mander and seven "hostile" Ranger lieutenants met with an AP reporter to discuss criticism of the law enforcement agency.

The officers lashed out at news accounts of human rights complaints by ex-Ranger Cheryl Steadman and DPS criminal investigator Lisa Sheppard and disputed charges by some retired Rangers that morale is deteriorating under Cook's leadership.

"We don't want to be the one who ruins the reputation of the Rangers," said Lt. Richard Sweaney of Dallas.

"We're not perfect, but you don't read about the Rangers running off with a Russian spy in California or getting caught with a customs agent down in Florida selling dope. We're under a microscope every day. We just don't do those sort of things."

The Rangers condemned news articles detailing Cheryl

Steadman's allegations that Rangers were drinking, gambling and behaving crudely at an overnight company meeting last year in East Texas.

Steadman, one of the history-making first women Rangers, left the 103-member force after the March 1994 episode and was reassigned to a DPS job in Houston.

An investigation by DPS in-

**"We just don't do those sort of things."**

— Lt. Richard Sweaney  
Texas Ranger

ternal affairs officers noted that no one was intoxicated and the gambling was limited to a small stakes poker game.

The report concluded that Steadman was not treated "inap-

propriately" and dismissed most of her complaints as "petty."

Cook, the senior captain since 1992, confronted discrimination-related charges by Sheppard, a Corpus Christi investigator who spurned a Ranger commission in 1994.

Cook assailed an accusation by an anonymous author that he attempted to persuade interview board members to change their scores to deny Sheppard a Ranger commission.

Cook said the DPS and the Rangers are "founded on integrity," adding, "Under no circumstances would the Department of Public Safety, or the Rangers, or Capt. Byrnes, or myself, or anybody else, tolerate the kind of conduct that's been described in the news articles dealing with the East Texas incident, the interview board incident, or whatever."

## HEALTH TIPS

### Calories, fat factors in weight

By Holly Rippa  
SPECIAL TO THE BATTALION

A recent health behavior survey found that 70 percent of A&M students eat snacks at least once a day.

If you eat snack foods, choose healthy snacks that are low-fat and low-calorie. Many snack foods that were once high in fat are available in a low-fat or fat-free version. Unfortunately, most snacks are loaded with sugar and have many calories.

Calories still count. Body weight is determined by the number of calories consumed, used as energy or stored. If more calories are consumed than burned, the result is weight gain.

In addition, if you deprive yourself of eating fat but still eat extra calories, your body will store the extra calories as fat.

Fat in the American diet dropped from 36 percent in 1975 to 30 percent today. But Americans are consuming 231 more calories per person per day, which adds up to 2 pounds a year weight gain.

It is not just an issue of total calories also count. Fat is not just an issue of total calories also count. Fat is not just an issue of total calories also count.

Snacks can be a healthy part of your daily food choices. So during your busy day, you want to grab a quick, eat fruit or vegetables, fat free, low in calories, and provide many essential nutrients.

For further information, students can contact the Health Education Center, A.P. Beutel Health Center.

# LAKE: Dredging will continue at Wolf Pen for most of July

Continued from Page 1

To avoid more extensive damage, the lake needs to be restored before there are any more heavy rains, McIlhenny said.

Also, because a trail around the lake is used on a daily basis by walkers and joggers, McIlhenny said the area needs to be maintained so it will be fit for recreational use.

Samantha Smith, city engineering as-

stant, said lake restoration is being completed by means of a rented dredge and a hired operator because this option had the best combination of economic and aesthetic benefits.

Smith said the city considered contracting a company to handle the entire dredging process instead of renting a dredge. This option was eliminated because of its high cost, she said.

Another identified option involved letting the lake dry up and then remov-

ing the excess silt with conventional equipment like bulldozers. Smith said this process would be expensive, tedious and messy.

Morgan agreed that removing silt with bulldozers was not the best option.

"One of the big problems we saw with this option was it would be a huge mud hole," Morgan said. "It would be a big mess for quite a while."

The least expensive alternative involved planting grass in the dry areas of

the lake and allowing the area to return to creek conditions. Smith said this option was ruled out because it was worth more to have the lake instead of just Wolf Pen Creek.

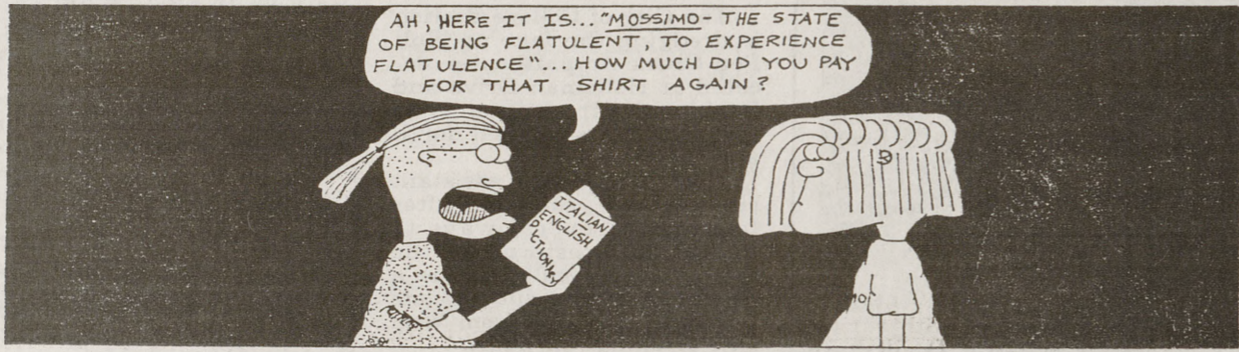
Smith said the dredging project is not meant to make the lake a new or different entity, but to return it to its original state.

"This is meant to be a park and I don't think the city is ready to give that up," Smith said.

## Corrections

In a page 1 story in The Battalion Thursday on proposed increases, Tanya Woodington was misstated as Tracy Winton. In a page 2 story in The Battalion Wednesday, a quote misattributed. County Judge Jim Kuboviak said "I would like to see 0.02 for the [alcohol] level for [every driver] moving it to 0.02 would save on the highway."

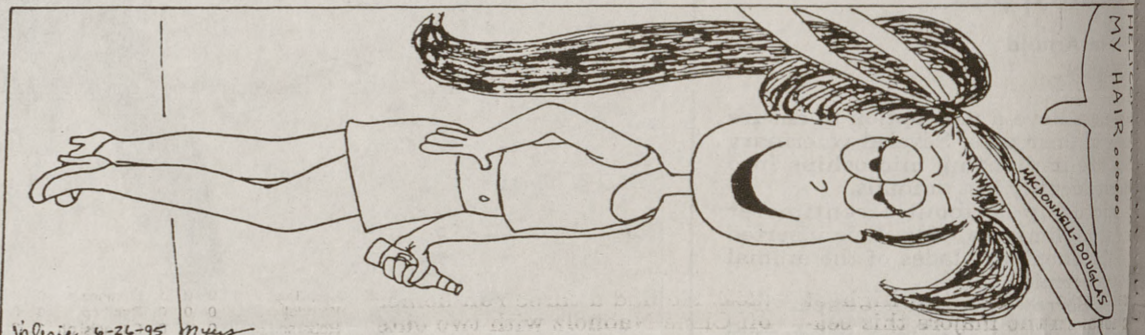
## Sketch



## By Quatro

## IN THE BUFF

## By VALEN



**VIP RESEARCH**

**INFECTED WOUND STUDY**

VIP Research is seeking individuals with infected cuts, scrapes, or sutured wounds for a 3-week research study of an investigational antibiotic cream. Qualified participants will receive free study medication, study supplies and medical exams. \$100 will be paid to qualified volunteers who enroll and complete this study.

VIP Research  
(409) 776-1417

**Bargain Matinees**  
All Shows Before 6 pm

Aggie Owned and Operated!  
Class of '79, '80, '91  
Entertaining Brazos Valley Since 1926

**SCHULMAN SIX**  
2000 E. 29th Street 775-2463

\*CASPER +PG  
\$5.50/\$3.50 1:10 3:15 5:15 7:20 9:35

\*BATMAN FOREVER +PG-13  
\$5.50/\$3.50 1:25 4:15 7:25 9:45

BRAVEHEART +R  
\$5.50/\$3.50 1:00 4:30 8:05

\*CONGO +R  
\$5.50/\$3.50 1:35 3:55 7:15 9:40

DIE HARD 3 +R  
\$5.50/\$3.50 1:30 4:00 7:00 9:45

BRIDGES OF MADISON +PG-13  
\$5.50/\$3.50 1:20 4:05 7:10 9:50

\* IN DOLBY STEREO

cut here

**DEFENSIVE DRIVING CLASS**  
Fri., June 30 (6-9 pm) & Sat., July 1 (8:30-11:30 am)  
Wed., July 12 (6-9 pm) & Thurs., July 13 (6-9 pm)

**STATE APPROVED DRIVING SAFETY COURSE**  
Register at University Plus (MSC Basement)  
Call 845-1631 for more information on these or other classes

cut here

**D&M EDUCATION ENTERPRISES**

**CONTACT LENSES**  
ONLY QUALITY NAME BRANDS  
(Bausch & Lomb, Ciba, Barnes-Hind-Hydrocurve)  
Disposable Contact Lenses Available

**\$118<sup>00</sup> TOTAL COST...INCLUDES**  
EYE EXAM, FREE ALCON OPTI-FREE CARE KIT, AND TWO PAIR OF STANDARD FLEXIBLE WEAR SOFT CONTACT LENSES.

**\$149<sup>00</sup> TOTAL COST...INCLUDES**  
EYE EXAM, FREE ALCON OPTI-FREE CARE KIT, AND FOUR PAIR OF STANDARD FLEXIBLE WEAR SOFT CONTACT LENSES.

**SAME DAY DELIVERY ON MOST LENSES.**

Call 846-0377 for Appointment  
**CHARLES C. SCHROEPEL, O.D., P.C.**  
DOCTOR OF OPTOMETRY

505 University Dr. East,  
Suite 101  
College Station, TX 77840  
4 Blocks East of Texas Ave. &  
University Dr. Intersection

VISA MasterCard

PTTS UPDATES → PTTS UPDATES → PTTS UPDATES → PTTS UPDATES →

**\*\*\* Parking Update \*\*\***  
June 23, 1995

As we advised you earlier this week, the Physical Plant has scheduled several lots for surface repairs this summer. The dates have changed and should be noted. Fliers will be placed on vehicles as time permits, signs will be posted in the parking areas and parking officers will be available to assist parkers. The new dates are as follows:

PA 55	Wednesday, June 21 - Friday, June 30 The parking spaces on the street between Teague and PA 55 will remain available on a first come, first serve basis. Parking for all other vehicles will be provided in PA 51. Shuttle service will be available.
PA 88	Friday, June 23 - Sunday, July 9 Relocate to other red or blue parking areas, suggested areas are PA 89 behind the tennis courts, PA 62, PA 95, or PA 96.
PA 50	Monday, June 26 - Tuesday, July 18 Relocate to other red or blue parking areas, suggested areas are PA 89 behind the tennis courts, PA 48, PA 62, PA 95, or PA 96.
PA 54	Monday, July 10 - Thursday, July 20 Parking will be available in PA 51 thru July 12. Beginning July 13 - 20 parking will be provided on the Bonfire Field. Shuttle service will be available.
PA 51	Thursday, July 13 - Monday, July 24 July 13 - 18 parking will be provided on the Bonfire Field. July 19 - 24 parking will be available in PA 50.
PA 46	Tuesday, July 18 - Tuesday, July 25 This is during Fireman's Training School. Parking will be available in PA 48, PA 91, PA 69, PA 62, PA 47, PA 90, and PA 89.
PA 59	Tuesday, July 25 - Wednesday, August 2 Relocate to PA 48, PA 47 and PA 90.
PA 35	Tuesday, August 1 - Friday, August 4 Relocate to the Commons Circle.

Please note that this information may be subject to change. If you arrive at your assigned parking area and find that it is closed, please park in the alternate parking area indicated above.

The Department of Parking and Transportation Services

← PTTS UPDATES ← PTTS UPDATES ← PTTS UPDATES ← PTTS UPDATES ←

**Questions to Ask When Choosing Child Care**

**NOW ENROLLING!**

**Stepping Stone School**  
Child Development Center  
"Committed to Excellence"

900 University Oaks Blvd. • 693-0074  
(Near Campus, 3 blocks from Texas Ave)

"I have not encountered another day care with the same consistent quality to teachers and program exhibiting such a loving, supportive environment for children."  
• Stepping Stone Parent

- I. CENTER ENVIRONMENT**
  - \* Are the classrooms designed for small groups of children?
  - Is the playground divided for different age groups?
  - Are the classrooms arranged for active involvement and hands-on learning?
- II. TEACHER TRAINING AND INVOLVEMENT**
  - \* Does the staff have a positive attitude towards you and your child?
  - Are the children spoken to gently and with respect?
  - Is the staff enthusiastic about children's learning?
- III. PARENT INVOLVEMENT**
  - \* Is there some form of planned daily communication between teachers and parents?
  - Does the center provide support to families through parent education and information about the center's activities?