

We Pay Cash For Your CDs

CD Exchange

New & Used CDs • Imports
Posters • Special Orders
Open 10-9 Weekdays,
12-6 Sundays

2416 Texas Ave., C.S.
(In the Kroger Center)

764-8751

CHOOSE FEE OPTION 18 to order your copy of the 1995-96 CAMPUS DIRECTORY when you register for fall classes. The student directory includes listings of students, faculty, staff and other information about Texas A&M. Only \$3.25.



EUROPASS

50% DISCOUNT

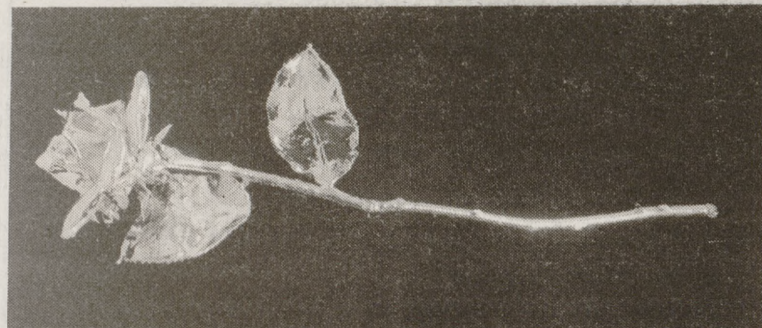
For 2nd Person in Party of Two
Traveling in 1st Class

Students!

Now you can travel in style! With the 50% discount, two 1st Class Europasses cost only \$12-\$17 more per person than two 2nd Class Youth Europasses.

EXECUTIVE TRAVEL
696-1748
123 Walton at Texas Ave. S.

THE EVERLASTING ROSE...



FOR THE EVERLASTING MOMENT!

Ring Dance '95

A real rose dipped in 24K Gold - just \$79⁹⁹

- Perfect for a future heirloom
- Collector's item

\$10 off with student or faculty I.D.

Montelongo's
Fine Jewelry

4323 Wellborn
Bryan
691-2019

Don't Forget Mother's Day!

BUSINESS IS BACK!

Italy Spring Semester 1996

Students will select a minimum of 12 hours:



Interested?
Attend any one of these informational meetings in 251 Bizzell Hall West:

Mon., Apr. 17	1 - 1:45
Wed., Apr. 19	12 - 12:45
Wed., Apr. 19	1 - 1:45
Wed., Apr. 19	2 - 2:45
Mon., Apr. 24	1 - 1:45
Mon., Apr. 24	2 - 2:45
Mon., Apr. 24	3 - 3:45
Wed., Apr. 26	1 - 1:45
Wed., Apr. 26	2 - 2:45
Wed., Apr. 26	3 - 3:45
Wed., Apr. 26	4 - 4:45

ECON 489/ BUAD 489	Economics of the Eur. Comm. Prof. Pier Luigi Sacco
LBAR 332/ MGMT 489	Culture of Mgmt. in the Eur. Comm. Prof. Pier Luigi Sacco
ARTS 350:	Arts and Civilization* Prof. Paolo Barrucchieri
ANTH 201:	Introduction to Anthropology Dr. Sylvia Grider
ANTH 205:	Peoples and Cultures of the World Dr. Sylvia Grider
PSYC 405:	Psychology of Religion Dr. David Rosen
PSYC 306:	Abnormal Psychology Dr. David Rosen

*Mandatory for all students
Study Abroad Programs
161 Bizzell Hall West
845-0544

ALLEN HONDA

7600 Hwy. 6 P.O. Box GA 409-696-2424
COLLEGE STATION, TEXAS 77840



HONDA

DEAR GRADUATING SENIOR:

CONGRATULATIONS!!! WE AT ALLEN HONDA ARE PROUD OF YOUR ACHIEVEMENT! TO HELP CELEBRATE YOUR ACCOMPLISHMENT, WE INVITE YOU TO COME IN AND PICK OUT YOUR NEW HONDA! NOW THAT YOU HAVE EARNED YOUR VALUABLE DEGREE FROM TEXAS A&M AND ARE JOINING THE BUSINESS WORLD, IT CAN BE THAT SIMPLE. WE HAVE SEVERAL FINANCING OPTIONS AVAILABLE - SO LET US SHOW YOU HOW EASY IT IS TO GET YOUR FIRST NEW CAR WITH LITTLE OR NOTHING DOWN.

HONDA HAS BEEN NAMED NUMBER ONE IN IMPORT LOYALTY FOR THE SIXTEENTH YEAR IN A ROW. WHICH MEANS, YEAR AFTER YEAR, MORE PEOPLE BUY HONDA AFTER HONDA. WHY? BECAUSE YOU GET WHAT YOU PAY FOR. WHY SETTLE FOR ANYTHING LESS?!

VERY TRULY YOURS,

C. J. Allen
C. J. ALLEN
CLASS OF '45

AGGIES HELPING AGGIES!

Wayward Montana wolf killed by car in West Texas

The animal is thought to have been domesticated and dropped off to fend for itself.

(AP) — A wolf hit by a car on an Interstate 10 frontage road in El Paso, Texas, was apparently a domesticated wolf once trapped by the U.S. Fish and Wildlife Service in Montana.

But how it got to West Texas is anybody's guess. El Paso animal control officers picked up the dead wolf Sunday morning, and found it had eartags and a Fish and Wildlife radio collar.

Joe Fontaine, project leader for the agency's Montana Wolf Recovery Project in Helena, said his project put the tags and collar on the animal last Aug. 4 when it was caught while officials were trapping coyotes.

He said he wanted to monitor

the animal and find out more about it, since it's difficult to tell a wolf from a wolf-dog hybrid and the agency knew of no wild wolves in the area.

The animal's behavior convinced Fontaine it was a domesticated wolf, raised from puppyhood by humans.

"It didn't know how to hunt, never demonstrated any ability to take down wildlife at all," Fontaine said. "It hung out in wheat and barley fields, a four- or five-square-mile area, which is very unusual for a wild animal."

The wolf also showed no fear of humans, walking away but not running when they approached, he said.

"You put it all together, and it pretty much tells you it's a domesticated animal," Fontaine said.

He had decided to trap the wolf again and retrieve the ra-

dio collar when the animal disappeared from the radio tracking screen in mid-October. He said he assumed it had been killed, and was annoyed no one returned the collar.

Now Fontaine believes someone probably picked up the animal. Since it's more than 1,000

"That's cruel."

The carcass has been sent to the Fish and Wildlife's national forensics laboratory in Ashland, Ore., to find out more about the animal — including whether it was a wolf-dog hybrid or a full-blooded wolf, said Hans Stuart, spokesman for the agency's Albuquerque office.

Stuart said no wild wolves have been released in New Mexico, although parts of New Mexico and Arizona have been suggested for future reintroduction of the endangered Mexican wolf.

Stuart said the animal found in El Paso just south of New Mexico was not a Mexican wolf, all of which are in captivity and are accounted for.

Fontaine said even if no one ever figures out how the animal got to El Paso, he'd like to know the results of the lab examination.

"It's going to be interesting to see what it was feeding on; it was well fed," he said.

"It's going to be interesting to see what it was feeding on; it was well fed."

— Joe Fontaine,
Montana Wolf Recovery Project



We can't tell you what direction to take, but we can sure help you get there.



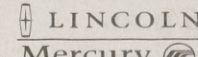
Whichever direction you decide to take, we can help you get there in style, with a brand new Ford or Mercury.

If you're a graduating senior, or a graduate student, you can get \$400 Cash Back or a Special A.P.R.**

\$400 Cash Back or a Special A.P.R.**

when you buy or lease a new 1994, 1995 or 1996 Ford or Mercury car, minivan or light truck. So graduate to a great deal.

See your Ford or Lincoln-Mercury dealer or call 1-800-321-1536 for details.



**Special Annual Percentage Rate alternative not available on leases, Customer Option Plan or Red Carpet Option Plan. **To be eligible, you must graduate with a bachelor's degree, or be enrolled in graduate school, between 1/1/93 and 9/30/95. You must purchase or lease your new vehicle between 10/1/94 and 9/30/95. Some vehicle eligibility restrictions apply.