

FREUDIAN SLIP OR SATURDAY NIGHT LIVE

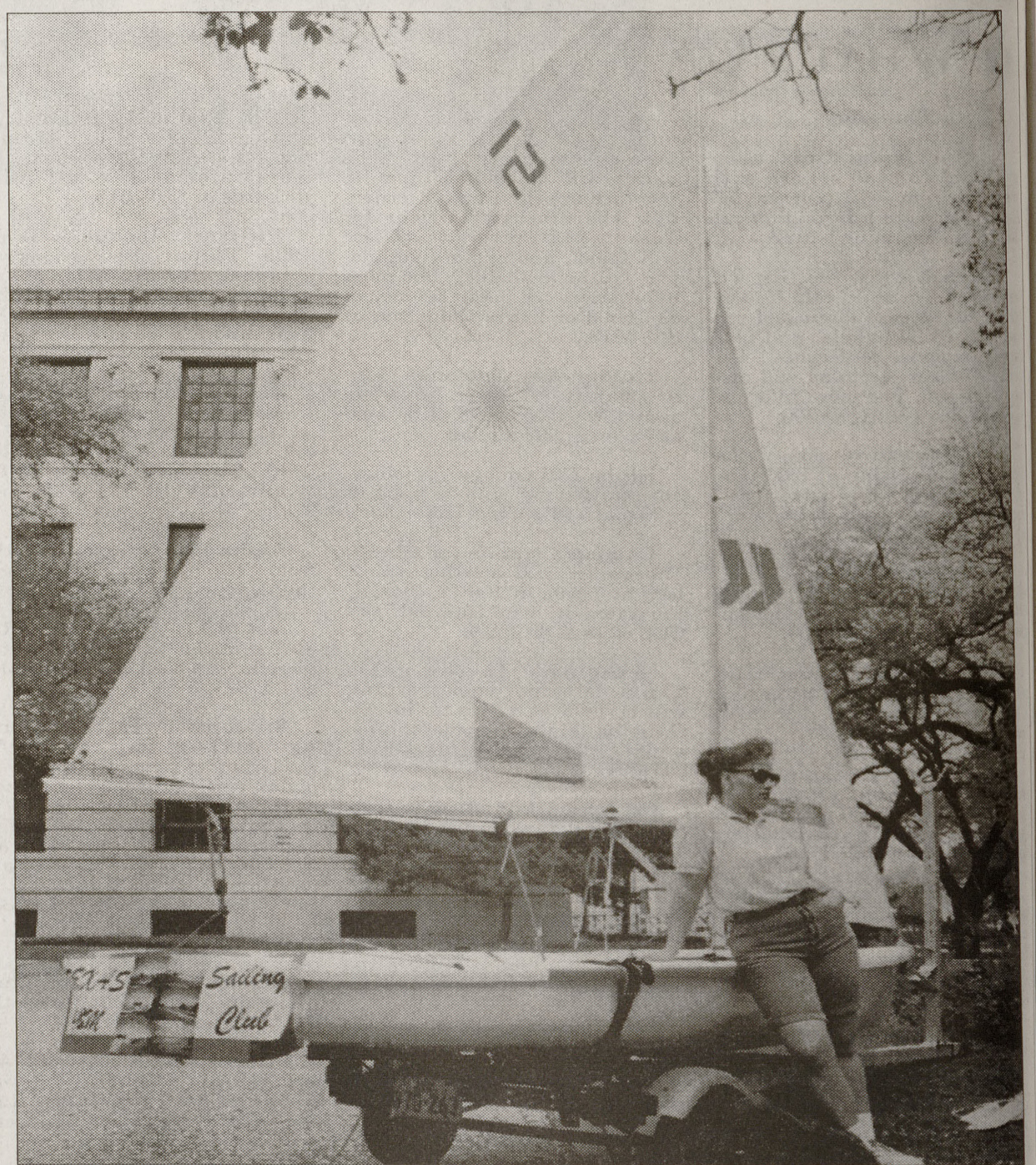
At 9¢ a laugh*, SNL is worth about \$1.35. Freudian Slip is worth \$38.70, but we'll get ya in for \$3.

Saturday, March 25, 1995
9 p.m. Rudder Forum
Doors open at 8:30 p.m.

*Value of laughter held in constant 1955 dollars.

Finally.

103.9 **Express** FM

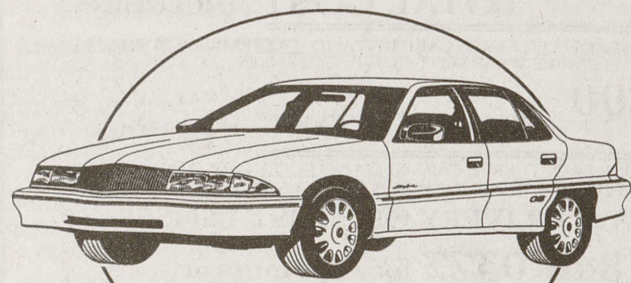


Roger Hsieh/The Battalion

Ship shape

Amber Bohlke, the social chair for the TAMU Sailing Club, recruits new members in a membership drive outside of the Academic Building on Wednesday afternoon.

Quality Deals in Bryan - College Station

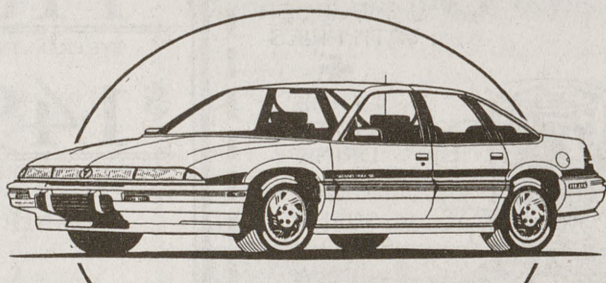


Buick Skylark
\$13,995

- '95 Buick Skylark
- Power Locks,
- Power Windows,
- Tilt Wheel, • Cruise Control,
- AM/FM Cassette,
- Alloy Wheels,
- ABS & more.

MSRP	\$25969
Disc	1374
Rebate	-600
Sale Price	\$13995

St. # 54-091



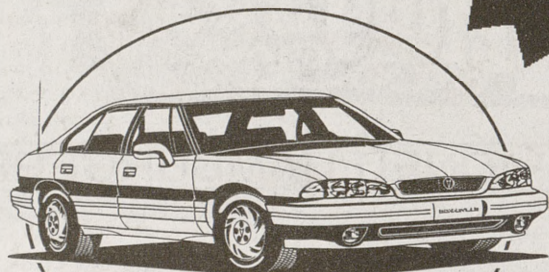
Grand Prix SE
\$15,995

- '95 Pontiac Grand Prix SE
- Power Locks,
- Power Windows,
- Tilt Wheel,
- Cruise Control,
- Dual Air Bags,
- AM/FM Cassette,
- & more

MSRP	\$17589
Disc	1094
Rebate	-500
Sale Price	\$15995

St. #52-192

SMART PEOPLE, SMART BUY

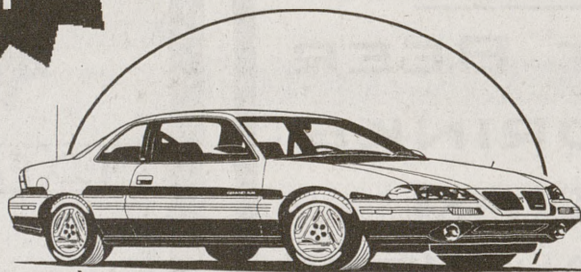


Bonneville SE
\$18,995

- '95 Pontiac Bonneville SE
- Power Locks,
- Power Windows,
- Tilt Wheel,
- Cruise Control,
- CD Player, • Spoiler,
- Dual Air Bags, • ABS,
- Aluminum Wheels & more.

MSRP	\$22,195
Disc	2450
Rebate	-750
Sale Price	\$18995

St. # 52-123



Grand Am SE Coupe
\$12,995

- '95 Pontiac Grand Am SE Coupe
- Power Locks,
- Power Steering,
- ABS,
- AM/FM Cassette,
- Driver Air Bag & more

MSRP	\$14569
Disc	1074
Rebate	-500
Sale Price	\$12995

St. # 52-136

Gary Stevenson's **Quality** **SUPER STORE**
 PONTIAC • BUICK • GMC
 Where Quality Always Exceeds the Price!
 601 S. TEXAS, BRYAN 779-1000 Where Quality Always Exceeds The Price! 779-1000



It's Time For The Annual, Sell-Out Presented By The

MSC VARIETY SHOW

Don't Miss Out, Get Your Tickets For April 28th, Parent's Weekend the *ONLY* showing of,

"Just Can't Get Enough"

Tickets go on sale March 27th, in the Rudder Box Office

For more information please contact Kimberly Leighman, in the Student Programs Office, at 845-1515



Persons with disabilities please call 845-1515 to inform us of your special needs. We request at least 3 working days notification, prior to the event to enable us to assist you to the best of our abilities.

