

EASE, SEND THERE TO LIVE.



DISCLAIMER: I'D LIKE TO FORMALLY APOLOGIZE TO THOSE WHO TAKE OFFENSE AT MY OPINIONS. THE VIEWS EXPRESSED IN THIS COLUMN DO NOT REFLECT THOSE OF THE BATTALION OR ANY OTHER STUDENT ORGANIZATION. IN FACT, CULTURALLY SENSITIVE PEOPLE SHOULD TAKE NOTE AND HOLD NOTHING AGAINST ME OR MY CULTURE GROUP.



ber 12 ing at 00 A.M.

ber 13 00 A.M.

ACU-I NOVA at is \$5.00/person. We request satisfaction of our ability.

rea 425 B.C.

Clinton ny Carter el Dukakis ob Bell er Mondale Kennedy



Voter's Guide

Platforms for major state, U.S. Senate races

Governor



Ann Richards (D)

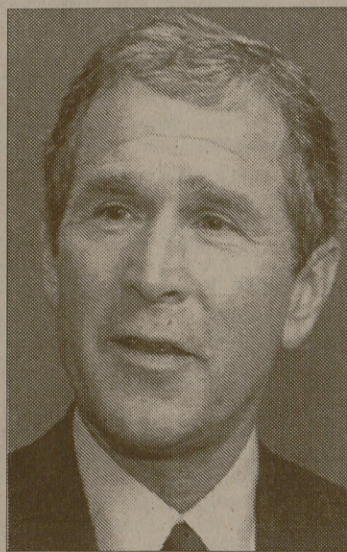
- Supports keeping in state law on 22-1 class size cap
- Supports keeping in state law the duty-free lunch
- Supports pay raise for teachers
- Supports keeping 45 minute planning
- Supports keeping state sick-leave days
- Opposes any reduction in Teacher Retirement System rate (increased benefit levels during her term)
- Supports teen curfew
- Supports making inmates go to work to pay back damages to victims and their families
- Supported NAFTA
- Opposes the closing of Kelly Air Force Base
- Supports giving local control of schools to parents

and teachers through the proposed Charter Schools Program

- Supports zero tolerance for drugs and weapons in schools
- Supports legislation to remove violent or disrespectful students to alternative programs
- Supported doubling prison time for violent crimes, building new cells, and cutting the number of parolees
- Supports holding parents accountable when kids repeatedly skip school
- Supports tough punishment for kids who commit adult crimes

Pierre Blondeau (L)

- Supports health vouchers - citizens choosing plans that fit their individual situations
- Supports financing health care by flat national consumer sales tax
- Opposes employer mandates
- Supports spending at current levels with no new programs until the hidden tax system is replaced with a visible taxation
- Opposes hidden taxes
- Supports abolishing income tax, social security tax, and other taxes that make businesses waste money to cut jobs
- Supports flat national consumer sales tax with no increase in average tax rate

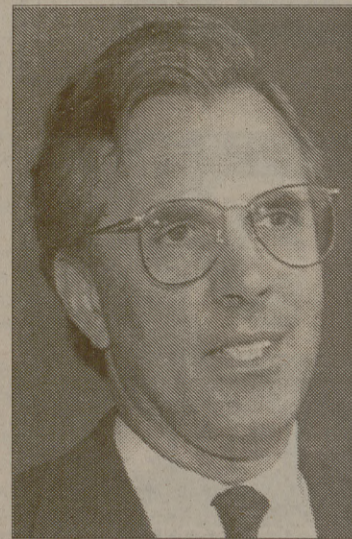


George W. Bush (R)

- Tougher penalties for violent juveniles
- Make it illegal for kids to have guns
- Lower the age at which violent youths can be tried as adults (14 years)
- No parole for murderers, rapists, child molester; end early release
- Speed up death penalty appeals
- Use tents, temporary barracks to house criminals
- More funding for education
- Strengthen local control of schools
- Abolish regulatory authority of the Texas Education Agency
- Limit how long people stay on welfare
- Require welfare recipients to work or go to school
- Cap benefits for having

- more children on welfare
- Hold fathers responsible; make them pay child payments
- Opposes taxpayer funding of abortions
- Supports term limits

U.S. Senate



Richard Fisher (D)

- Supports ending politicians' financial irresponsibility
- Supports more programs for young Texans
- Supports being tough on crime
- Supports reforming Congress
- Supports balancing the budget
- Supports making health care affordable
- Supports insurance reform for health care
- Supports universal coverage through "prudent subsidi-

dies" for health care, not employer mandates



Kay Bailey Hutchison (R)

- Supports term limits
- Supports balanced budget amendment
- Supports line item veto for president
- Supports parental notification and consent for abortions by minors
- Opposes a nationally funded national health care system
- Opposes allowing open homosexuals to serve in the armed forces
- Opposes government/taxpayer funded abortions
- Favors an increased tax deduction for children under the age of 18

- H.J. "Tex" Lezar (R)**
- Opposes state income tax; supports voter approval of any new tax increase
- Supports abolishing parole and early release for prisoners
- Eliminate "Robin Hood" funding plan
- Supports "Home Rule" school districts
- Supports term limits
- Opposes abolishing the current law prohibiting homosexual conduct
- Opposes taxpayer funding of abortion

Bob Bullock (D)

- Supports pro-choice for abortion
- Supports charter schools - parents, teachers, and businesses can re-create schools under their own rules without state interference
- Supports writing a two-year state budget that does not require new taxes
- Supports substance abuse treatment for convicts after they are released from prison
- Supports prison and cell construction
- Supports new laws to change the parole system and keep violent killers behind bars
- Supports state bond assistance for school construction
- Supported the Senate's provision for immunization of all Texas children

Lieutenant Governor

Source - Candidates Campaign Literature

AGGIE DEMOCRATS

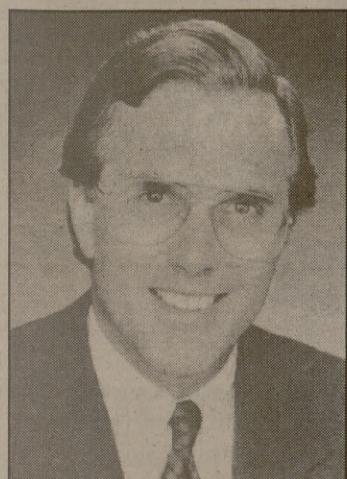
TODAY IS THE DAY!

VOTE!!

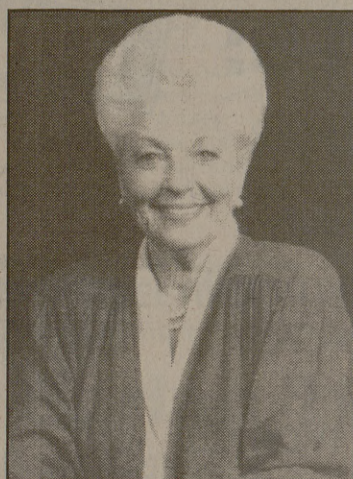
For information about Aggie Democrats call Eric at 764-9120

BE INFORMED!

Take the time to know the candidates and the issues.



Richard Fisher
United States Senate



Gov. Ann Richards
Governor

- John Bryant - U.S. House**
- Bob Bullock - Lt. Governor**
- Dan Morales - Attorney General**
- John Sharp '72 - Comptroller**
- Martha Whitehead - State Treasurer**
- Garry Mauro '70 - Land Commissioner**
- Marvin Gregory - Agriculture Commissioner**
- Jim Turner - State Senator**
- Dan Kubiak - State House**

Rail Road Commission

- Jim Nugent**
- Mary Scott Nabers**

Justice, Supreme Court

- Raul Gonzalez, Pl.1**
- Alice Oliver Parrot, Pl.2**
- Jimmy Carroll, Pl.3**

Presiding Judge, Court of Criminal Appeals

- Mike McCormick**

Judge, Court of Criminal Appeals

- Charles Campbell, Pl.1**
- Betty Marrshall, Pl.2**

Member, State Board of Education

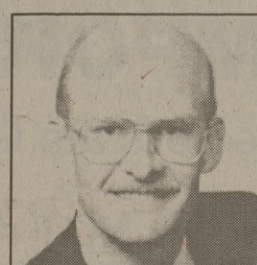
- Patsy Johnson**

Justice, 1st Court of Appeals

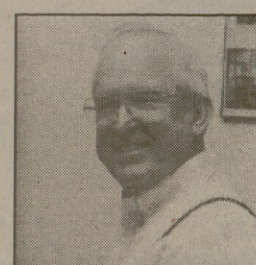
- Helen Cassidy, Pl.1**
- Michol Mary O'Connor, Pl.3**

Justice, 14th Court of Appeals

- Bob Moore '56, Pl.1**
- Ross Sears, Pl.2**
- George Ellis, Pl.3**
- Joe Draughn, Pl.4**
- Ed Cogburn, Pl.5**
- Patrice Barron, Pl.6**



Jim Locke '75
County Court Judge



Bob Bell '65
County Judge



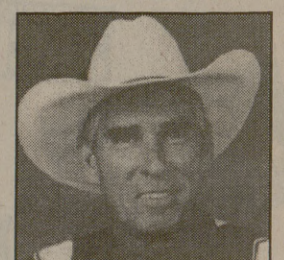
Tommy Munoz
District Clerk



Linda Bayer
County Treasurer



Carey Cauley, Jr.
County Commissioner, Pct. 4



Doug Richards
County Commissioner, Pct. 2

For voting information please call
Brazos County Democratic
Headquarters at 779-3158

AGGIES FOR ANN RICHARDS

Pol. Ad. pd. for by M. Childress, 3200 Finfeather, Bryan, TX 77801