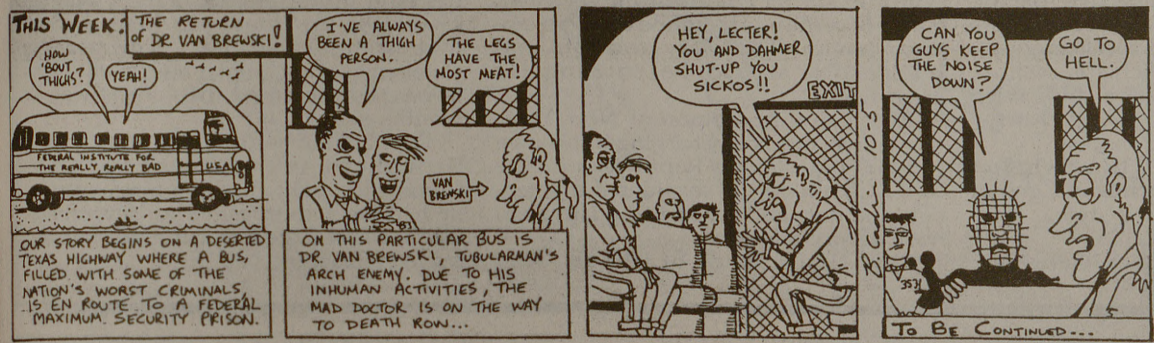


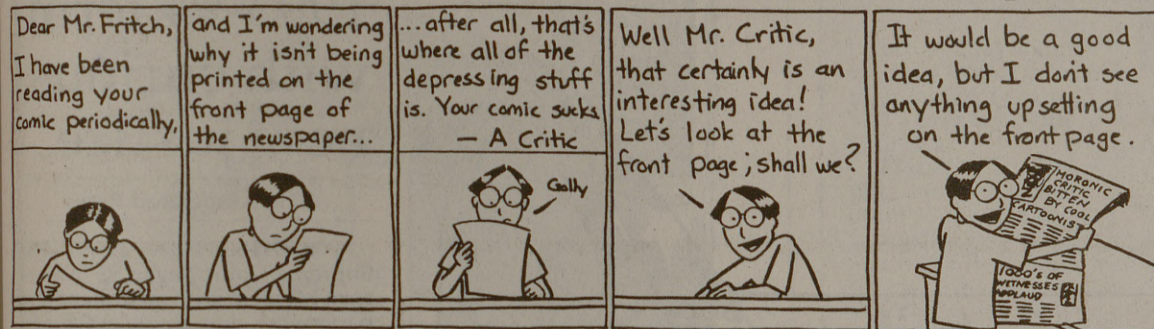
Tubularman

By Boomer Cardinale



Fritch

By Critch



Astronauts ready for December mission to repair Hubble Telescope

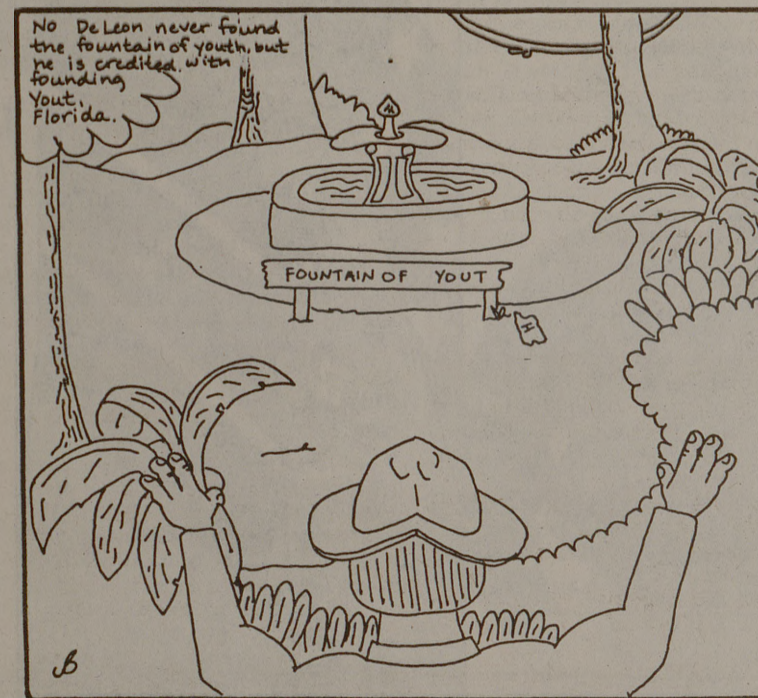
SPACE CENTER (AP) - Two astronauts on Monday predicted their experiences on a seven-hour spacewalk would help another crew fix the Hubble Space Telescope's blurry vision during a crucial flight this December.

Astronauts Carl Walz and James Newman conducted a dress rehearsal for the Hubble mission midway through Discovery's 10-day flight last month.

The five-man crew also released an experimental communications satellite, as well as an ultraviolet telescope they retrieved before coming home to the first-ever night landing at Cape Canaveral, Fla.

During their spacewalk, Walz and Newman tested tools, including a power socket wrench and a portable foot restraint, to be used during five to seven spacewalks on the Hubble mission.

JUST THE BEGINNING



By Jason Brown

STUDENT COUNSELING SERVICE

...a Department in the Division of Student Services

CENTER FOR CAREER PLANNING Fall 1993 Services

Workshops • Interest Testing • SIGI-Plus • Individual Counseling

WORKSHOPS

How To Choose A Major

Wednesday, Oct. 6, 3 - 4:30 p.m.
 Monday, Oct. 18, 1 - 2:30 p.m.
 Thursday, Oct. 28, 3 - 4:30 p.m.
 Tuesday, Nov. 9, 10:30 - 12:00 noon
 Tuesday, Nov. 30, 1 - 2:30 p.m.



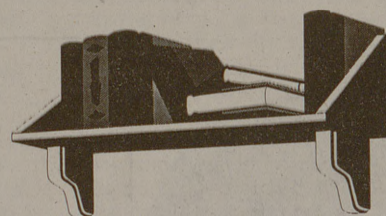
Center for Career Planning Workshops

- How to Choose a Major
- Career Planning: Interests and Personality Styles
- Personality Type and Leadership Styles

Career Planning: Interests and Personality Styles

Applies interest patterns and personality styles to career planning. Attendance at all four sessions is required.

Session 1: Thursday, Oct. 14, 1:30 - 3 p.m.
 Session 2: Thursday, Oct. 21, 1:30 - 3 p.m.
 Session 3: Thursday, Oct. 28, 1:30 - 3 p.m.
 Session 4: Thursday, Nov. 4, 1:30 - 3 p.m.

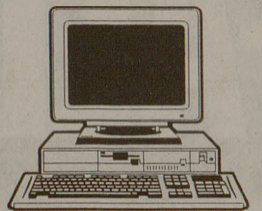


Personality Type and Leadership Styles

Myers-Briggs Type Indicator interpretation focusing on leadership and problem-solving styles.
 Wednesday, Nov. 3, 10:30-noon

SIGI-PLUS

A computerized program that assists in career planning by providing a self-assessment of values, interests, skills, and occupational information.



INTEREST TESTING

A variety of interest tests including the Strong Interest Inventory and the Self Directed Search are available upon counselor recommendation.

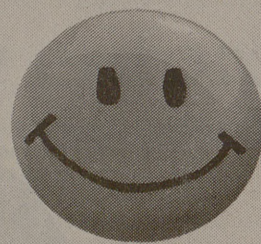
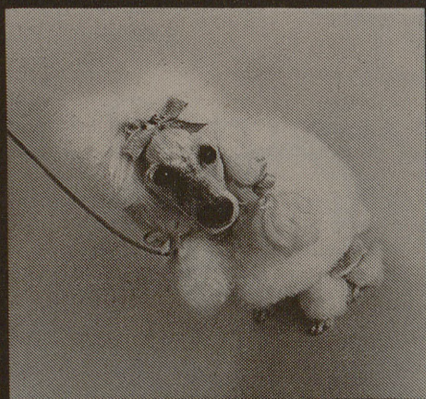
INDIVIDUAL CAREER COUNSELING

Students may schedule an appointment with a career counselor to discuss concerns about choice of major or career planning.

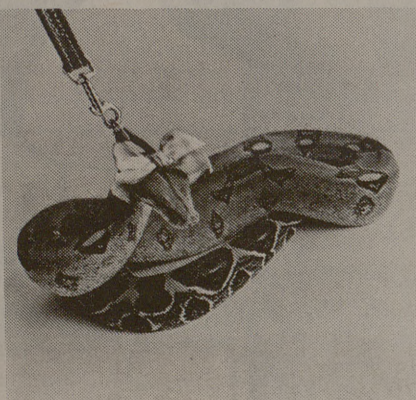
Preregistration for workshops and SIGI-Plus is requested!

Contact the Center for Career Planning (845-4427) at the Student Counseling Service, 300 YMCA Building.

what's out



what's in



1-800-COLLECT™

America's Inexpensive Way To Call Someone Collect.™

Dial it instead of "0" and save up to 44%.