

ATTENTION:
Class of
95!

Council Chairperson applications are now available in the Student Programs Office

VMA Information Systems
IMPACT
One-Call Information Hotline
774-1222

- Time and Temperature 1555
- Real Estate 8001
- Sports 3000
- Financial 6001
- Horoscopes 4000
- Entertainment 9001
- Medical/Dental 2000

Simplicity!

1. Dial Number
2. Enter 4-digit Code
3. Become Informed!

SAVE \$32

On Routine Cleaning, X-Rays and Exam
(Regularly \$76, With Coupon \$44)
Payment must be made at time of service.

BRYAN COLLEGE STATION
Jim Arents, DDS Dan Lawson, DDS
Karen Arents, DDS Paul Haines, DDS
1103 Villa Maria Roxane Mlak, DDS
268-1407 Texas Ave. at SW Pkwy
696.9578

CarePlus
DENTAL CENTERS
EXP. 05-15-93

**LSAT
GRE
GMAT**

- Small Classes
 - Personal Attention
 - Guaranteed
- 696-9099**

THE PRINCETON REVIEW

We Score More!

Neither ETS nor Princeton U. are affiliated with The Review

Escape slides pose risk, federal air officials say

THE ASSOCIATED PRESS

WASHINGTON — The inflatable evacuation slides used by airline passengers to slip to safety may cause some injuries, but there's nothing better to take their place, federal air safety officials and industry observers say.

More than 30 of the 189 passengers and 13 crew members aboard an American Airlines DC-10 were hurt Wednesday as they slid down the escape chutes after the jet's landing gear collapsed on landing at Dallas-Fort Worth International Airport.

The most serious injury was to 79-year-old Sarah Printz of Vero Beach, Fla., who suffered a broken neck. Hospital officials said the other injuries were mostly minor, including broken bones, scrapes, bruises and shock.

The National Transportation Safety Board, which investigates plane mishaps, is probing the Dallas incident. Part of the investigation will center on how the evacuation took place and why the injuries occurred, said agency spokesman Alan Pollock.

The safety board and the Federal Aviation Administration don't record the number of injuries caused by the chutes. But NTSB spokesman Ted Lopatkiewicz said anecdotal evidence shows slide injuries are common.

"You have hundreds of people jumping down slides, which they are not trained to do," Lopatkiewicz said. "There are evacuations quite often and people get burns and sprained ankles all the time."

In fact, so many people have been injured on the slides during disaster simulations that aircraft manufacturers sought to change FAA test procedures.

The FAA requires certification of all new types of aircraft with drills requiring evacuation of all aboard the craft within 90 seconds. About 1,000 evacuation tests have been conducted by U.S. airline and aircraft companies since the 1960s, resulting in hundreds of injuries.

Power plant

Continued from Page 1

produce electricity, hot water, chilled water and steam.

A&M Physical Plant Director Joe Suggs said the projected cost of the cogeneration facility will be between \$75 and \$125 million which would be financed through tax-free bonds sold to investors. The plant is expected to save A&M \$60 million over the next 20 years.

Texas A&M currently operates a cogeneration plant that produces approximately 70 percent of the electricity needed by the University. The remaining energy needs are supported by electricity purchased from Brazos Electric Cooperative.

Turner requested the bill pass as a local bill, meaning it would not require debate on the Senate

floor for passage. The committee chose to send the bill to the Senate floor anyway because of the high cost of the plant. The earliest the Senate could act on the bill is Monday.

Michael Kelley, Turner's higher education aide, said no senators had expressed opposition to the bill, and he is confident the bill will pass because the plan places no financial risk on A&M or the state.

"It is especially strong because A&M is asking for no state funding for it," he said.

The Texas A&M University System Board of Regents will choose an outside contractor, according to the bill. The finalists are Tenneco Brown & Root, CSW Energy Inc. and the city of College Station TMPA Enserch Development.

World News Briefs

Israel launches attack on Lebanon

MARJAYOUN, Lebanon (AP) — Israel launched helicopter assaults in southern Lebanon and shelled villages Tuesday after a roadside bomb killed three Israeli soldiers and seriously wounded two others.

Security sources said five Lebanese villagers were wounded in the Israeli raids.

The hostilities came a week before Middle East peace talks are scheduled to resume in Washington. Responsibility for the roadside bomb was claimed by the military wing of the Iranian-backed Hezbollah.

Hezbollah, a fundamentalist Shiite Muslim group, has vowed to sabotage the peace talks and to keep up guerrilla raids in an attempt to force Israel to give up its self-designated "security zone" in southern Lebanon.

South African workers strike

JOHANNESBURG, South Africa (AP) — In an outpouring of black rage, millions of workers went on strike Wednesday to protest the slaying of black leader Chris Hani. Four were killed and hundreds wounded as blacks battled police.

The worst clash was in the black township of Soweto, where police fired on marchers outside the main police station. Hospital spokeswoman Adri Potgieter said three people died, five were critically wounded and 259 suffered minor wounds.

Police claimed they fired because protesters were hurling rocks, but witnesses said most of the crowd was calm and had started to leave the area. Among the dead was African National Congress official Sam Ntobane, the black group said.

NOW

Continued from Page 1

the ways it influences the attitudes toward rape, increasing the acceptance of the "rape myth." The myth portrays women as enjoying rape and other violent acts.

Stock said studies have shown that men are more accepting of the myth after viewing this type of pornography and, consequently, they may be more likely to commit rape.

One example Stock used was a video game that awards the player points for raping women. Other examples Stock gave included pornographic magazines equating "sexual play and sexual crime," thus endorsing rape.

Stock said even though the "rape myth" is deeply rooted in U.S. culture, attitudes can be changed through education, and violence can be curbed by demands to make communities safer.

"Look what happened to smoking," she said. "If we can change the attitudes about smoking in just two decades, we can change social attitudes (about rape)."

Currently, Stock said, the number of rapes reported by the University Police Department is misleading because not all victims report the rape to the police.

To combat this problem, Stock and the coordinator of student affairs will distribute a questionnaire next week to students to try to determine a more accurate number of rapes and the situations in which they occur.

The rally ended with a march across campus and a repeated call for support: "Women unite. Take back the night!"

RENT THE REVOLUTION

Largest Selection of Wheels & Bearings in Town!

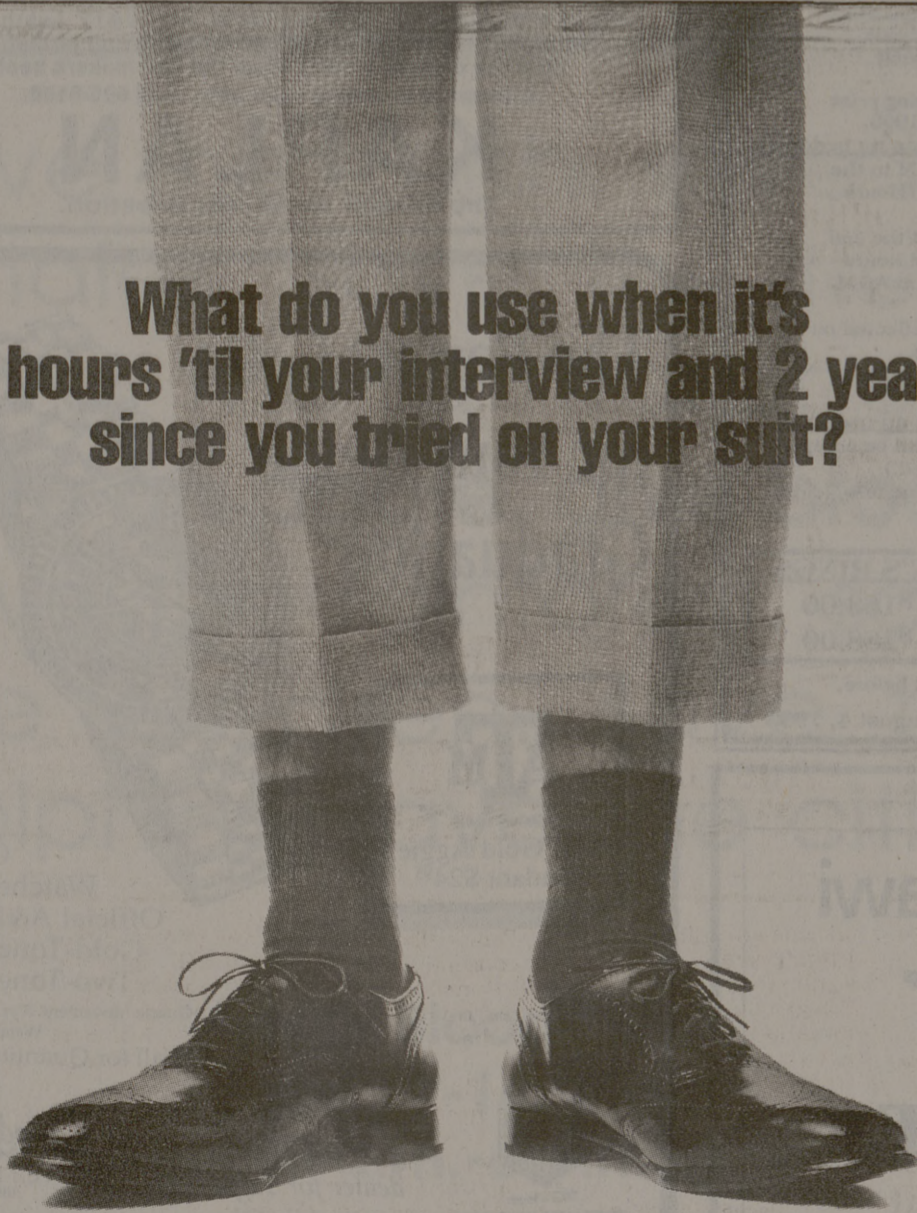
Latest Rollerblade skates and Gear Available.

\$10 All Day

DISCOUNT BIKE COMPANY
Bicycles and Inline Skates
846-1946

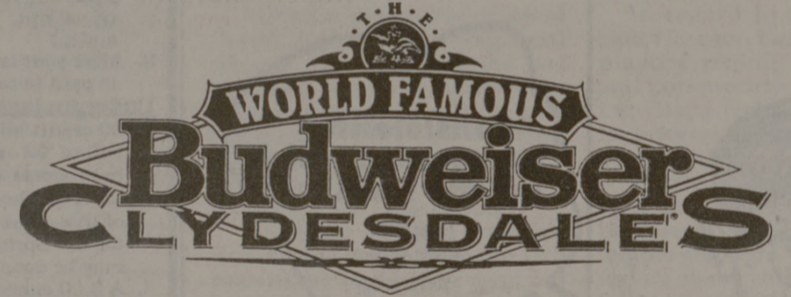
Rollerblade SKATESMART

What do you use when it's
2 hours 'til your interview and 2 years
since you tried on your suit?



With Visa® you're accepted at more than 10 million places around the world, nearly three times more than American Express. Just in case you ever come up a little short.

Visa. It's Everywhere You Want To Be.®



The Budweiser Clydesdales Are Coming Your Way!

Don't miss the magnificent Budweiser Clydesdale Eight-Horse Hitch! Enjoy watching the perfectly matched team pulling a bright red Budweiser wagon. It's a sound and sight that every American should experience.

(Inclement weather may cause cancellation of a scheduled event.)



Thursday, April 15
Post Oak Mall 4-7 p.m.

Saturday, April 17
(Chilifest 93' SAE/MDA)
Snook Rodeo Grounds 2-5 p.m.

Housed at Freeman Arena April 14 - 18



Jack Hilliard Distributing Company
775-9047