

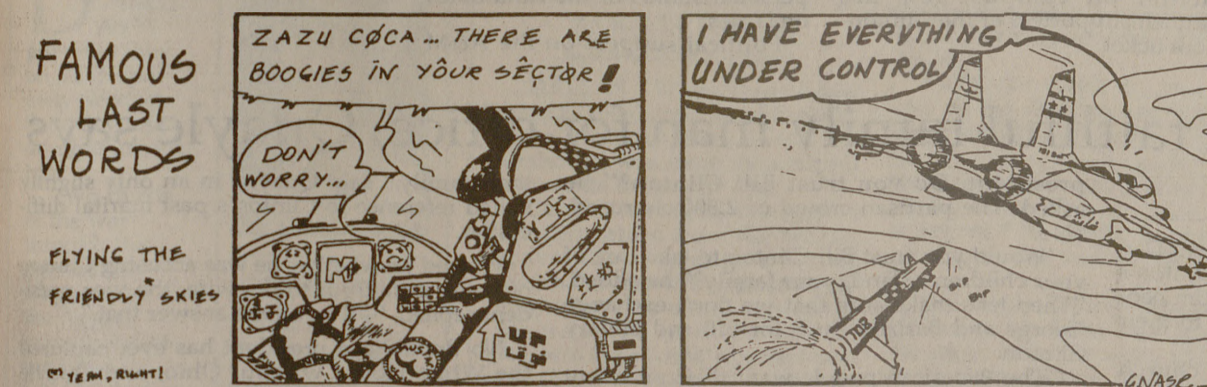
(the story so far...)

by thomas deeny



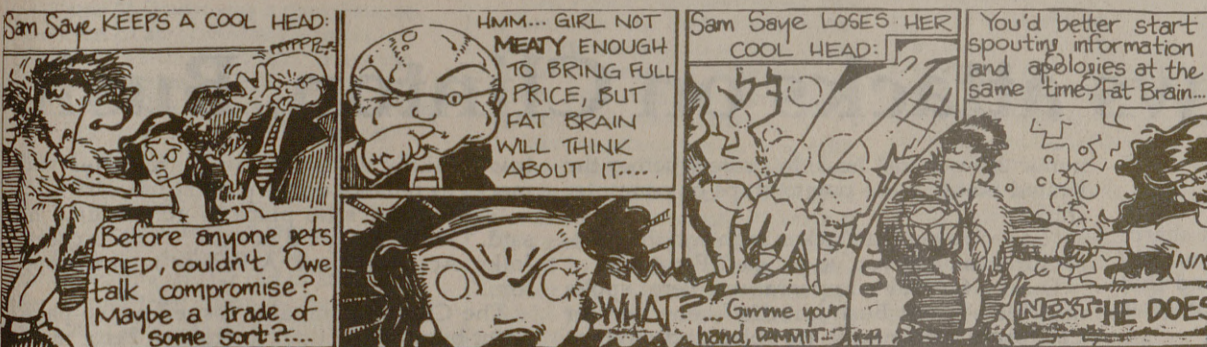
The Food Chain

by george



KOZY "K"

By Clay Welch



Clinton leads last minute polls

Surveys indicates close second for Bush followed by Perot

THE ASSOCIATED PRESS

NEW YORK — Bill Clinton's diminished lead in the national polls opened up a notch Sunday, and he led President Bush by eight points in the survey that had shown a dead heat last week.

Gallup's daily tracking poll for Cable News Network and USA Today had Clinton at 44 percent, Bush at 36 percent and Ross Perot at 14 percent among 1,562 likely voters interviewed in polls Saturday and Sunday. Six percent were undecided.

The poll had a margin of error of plus or minus three percentage points.

Clinton was up by seven points in Gallup's polls of 1,579 likely

voters on Friday and Saturday, with 43 percent. Bush had 36 percent and Perot had 15 percent.

Clinton led by five points in a Harris Poll taken Friday night through Sunday afternoon.

The poll of 1,675 likely voters showed Clinton with 44 percent, Bush with 39 percent, Perot with 17 percent and 1 percent for others. The percentages add up to 101 because of rounding and the allocation or exclusion of undecided voters, a technique some polls apply very close to an election.

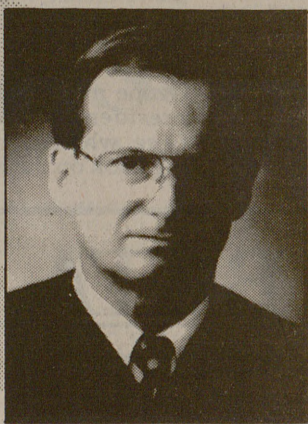
ABC News said the average from its tracking polls Thursday through Saturday was Clinton 42 percent, Bush 37 percent and Perot 17 percent, based on 1,369 likely voters.

Clinton would still have a lead in the latest Gallup poll even if the margin of error, three percentage points, was taken away from him and given to Bush. By the same reckoning, Clinton's lead in the ABC and Harris polls was within those polls' three-point margin of error.

Because the race is close and a significant number of voters, particularly Perot supporters, say they might change their minds, polling companies said they would continue polling through Monday and release final polls on Election Day.

An ongoing AP survey of polls released in all 50 states continued to show Bush at a disadvantage in the must-win contests for electoral votes.

Ask A Lawyer.



97% of Brazos County's lawyers say Delaney is either "qualified" or "well qualified;" 0% say Delaney is "not qualified."

Only 13.8% say Delaney's opponent is "qualified;" 0% say he is "well qualified," and 66.6% say he is "not qualified."

Keep quality. Keep experience.

Local lawyers say Delaney well qualified

Almost 67 percent say opponent Hawtrey not qualified to judge

By JIM HINEY
Eagle staff writer

About 71 percent of the local lawyers who responded to a Brazos County Bar Association poll said they believe incumbent 272nd District Judge John Delaney, a Democrat, is well qualified for his job.

Almost 67 percent of the 72 lawyers who participated thought Delaney's Republican challenger, Bryan lawyer John Hawtrey, was not qualified to serve as district judge.

Hawtrey criticized the poll as skewed and said the results were invalid. The local bar association sent questionnaires to all members of the State Bar of Texas who listed an address in Brazos County, said Bryan lawyer Tyler Moore, president of the local bar association.

About one-third of the lawyers contacted responded to the poll, Moore said. The poll isn't meant as an endorsement of any candidate, Moore said, but as a means of finding out local lawyers' opinions about state and local judicial candidates, he said.

The poll included state appeals cases, the 272nd District Court race, the race for county justice of the p

Please see POLL, p. 9

Courtesy of The Eagle
Thursday, Oct. 15, 1992

RE-ELECT
JOHN DELANEY
JUDGE, 272ND DISTRICT COURT

Brazos County Bar Association Poll (Oct. 1992)

72 lawyers rated the candidates as follows:

	Not Rated	Not Qualified	Qualified	Well Qualified
DELANEY	2	0	19	51
Opponent	14	48	10	0

Political ad paid for by the Judge Delaney Campaign, Linda Castoria, Treasurer, P.O. Box 3471, Bryan, Texas 77805

CONGRATULATIONS

DECEMBER 1992 ACCOUNTING GRADUATES

OF TEXAS A&M

WHAT: Free Drawings for Fabulous Prizes
Market Research Survey
Refreshments

WHY: To Help Us Better Service Current and Past Accounting Students of TEXAS A&M

WHEN: Monday, November 2 - Tuesday, November 3

WHERE: At Our Table Located in Blocker

HOW: Your Completed Survey Automatically Enters You Into Our Drawings For:

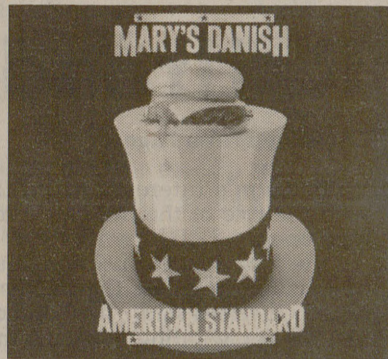
- Free Kaplan CPA Review Course
- Free Complete Set of Computer Software
- Free Complete Set of CPA Flip Cards
- Free CPA T-Shirts

KAPLAN

THE ANSWER TO THE TEST QUESTION

MARY'S DANISH

ON SALE



November 2

CD \$11.95
CASS \$7.97

MARY'S DANISH

with
DAVID GARZA
AND THE
LOVEBEADS

STAFFORD OPERA HOUSE

marooned

CD's • Tapes • LP's

110 College Main (409) 846-0017
College Station, TX 77840 Fax: (409) 846-3153

VOTE!

VOTE!