

**ATS GROUP TUTORING**

**ECONOMICS - 202**

WED & THU CLASSES AT COLLEGE STATION CONFERENCE CENTER \$5

MON-3/30	TUE-3/31	WED-4/1	THU-4/2	FRI-4/3
ECON 202 Test 2 Review 3pm-5:30	ECON 202 Test 2 Review 3pm-5:30	ECON 202 Test 2 Review 5:30-8pm	ECON 202 Test 2 Review 5:30-8pm	ECON 202 Test 2 Review 3pm-5pm
ECON 202 Practice Exam 10:30-1am		ECON 202 Test 2 Review 8:30-11	ECON 202 Test 2 Review 8:30-11	<b>SUN-4/5</b> ECON 202 Practice Exam 8pm-11pm

REVIEW CONSISTS OF TEST QUESTIONS (REVIEW PACKET), PROBLEMS-SOLUTIONS CALL MON-THU FROM 2-5 FOR DETAILS NORTHGATE, BEHIND 7-11, 2 PESOS

**846-2879**

THE AMERICAN INST. OF AERONAUTICS AND ASTRONAUTICS ★ THE CORPS OF CADETS ★ & THE AMERICAN HELICOPTER SOCIETY

Proudly Presents

BRIG. GEN. ROBINSON RISNER, USAF-Ret.

WWII AVIATOR  
KOREAN WAR HERO  
VIETNAMESE P.O.W., 1965-1973

★★★  
APRIL 2nd, 1992  
601 RUDDER, 7:45 PM

**Tuxedo Rentals**

from **\$39<sup>95</sup>**

- With over 70 styles available
- Affordable prices

**New Spring Hours**  
to better serve you

8 til late Mondays & Thursdays

10-6 Saturday

1-5 Sunday

March 30<sup>th</sup> - May 2<sup>nd</sup>



**LADIES AND LORDS**

807 Texas Ave.  
(across from Red Lobster)  
764-8289

**FREE SPRING ALLERGY SKIN TESTING**  
Ages 18 and older

Individuals with spring allergy symptoms to screen for upcoming research studies.

**IMPETIGO STUDY**

Individuals of any age with symptoms of impetigo (bacterial infection of the skin) to participate in an investigational drug research study using a cream with drug in it. \$150 for those chosen and completing the study.

**TENSION HEADACHE?**

Individuals with moderate to severe Tension Headaches wanted to participate in a 4-hour headache relief research study with an investigational medication in tablet form. Flexible hours. \$75 incentive for individuals who are chosen and complete the study. Daily, till 6:30 776-0400.

**ASTHMA STUDY**

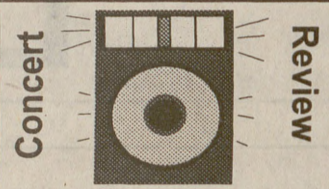
WANTED: Individuals, age 12-65, with mild to moderate asthma to participate in a clinical research study for 6 weeks with an investigational medication in inhaler form. Individuals must be using inhaled steroids and bronchodilators daily to qualify. \$400 incentive paid to those completing the study.

**SKIN INFECTION STUDY**

Individuals age 13 and older wanted to participate in a research study for bacterial skin infections such as: infected wounds, infected burns, boils, infected hair follicles, impetigo, infected ingrown toenails and others. Investigational oral antibiotic in capsule form. \$100 incentive for those chosen who complete the study.

For more information call:  
**BIOPHARMA, INC.**  
**776-0400**

**Lovett gives first rate performance**



By Atlantis Tillman  
The Battalion

It was hard to tell who was having more fun in Rudder auditorium last night—the crowd or the band.

Grammy Award winner, Lyle Lovett and His Large Band gave a stellar performance to a packed auditorium Monday night. Performing old favorites like "L. A. County" as well as material from the new album to be released this week, Lovett made the huge crowd feel like a gathering of old friends.

His Large Band, consisting of Matt McKenzie on the bass guitar, James Gilmar on the congas and John Hagen on the cello, held its own with a jazzy, humorous tune while waiting for Lovett to join them on stage. The band members enhanced the personality of the show especially Hagen, who took a mild-mannered cello where it's never been before.

Lovett opened with "Friend of the Devil," a song by the Grateful Dead and, in his casual offhandedness, told how he found he had been singing the wrong words to the song.

Lovett eased into new material with "Family Reserve," an unusually morbid song about deaths experienced within his family. He recalls how his second cousin

choked on a peanut butter sandwich while the help, not knowing what to do, watched.

"I try to identify human behavior in my songs," said Lovett, in a post-concert interview. "People seem to deal with pain by making jokes, with this song it's hard to tell whether you should laugh or cry."

The new material is just as unique and varied as on previous albums, with songs Lovett wrote sitting in church "God knows if a preacher preaches long enough, he'll get hungry, too" and while watching a friend do repair work under his house "Flyswatter, Ice Water Blues."

"Flyswatter, Ice Water Blues" is a love song about spending a few minutes in the morning with your husband or wife before going to work," Lovett said.

There are a few more ballads on this album, challenging the accusation that Lovett is a misogynist because of songs like "She's No Lady (She's my wife)."

"I never meant those songs in any way other than to point out how people treat one another," Lovett said. "There are people out there that really feel that way about their wives."

Lovett picked up the pace with "Good Intentions" and "Give Back my Heart." These songs capture both sides of Lovett's style: a smooth jazz sound and a bouncy country song.



HUY NGUYEN/The Battalion

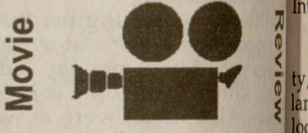
Lyle Lovett, '79, returned to Texas A&M to play for a packed Rudder Auditorium.

But, the strongest performance of the night had to be in "If I Had a Boat." Lovett, in strong voice all night, shone even more brightly in performing perhaps his best song, a song about heros and cowboys.

"Writing is a difficult thing," Lovett said. "I never feel like I have a handle on things, so I just keep trying."

Lovett's latest effort will be available in stores this week.

**Harrelson, Snipes deliver laughs with 'White Men Can't Jump'**



By Timm Doolen  
The Battalion

"White Men Can't Jump"  
Starring Woody Harrelson and Wesley Snipes  
Directed by Ron Shelton  
Rated R

With a title like "White Men Can't Jump," one expects a simple, sophomoric comedy that is big on cheap laughs and easily forgettable when you leave the theater. It is a comedy with some cheap laughs, but is done so in a way that is highly entertaining and rarely offensive to the senses, as most of today's comedies are.

The story concerns two hustlers on the basketball courts of Los Angeles, a white guy, Billy Hoyle (Woody Harrelson), and a black guy, Sidney Deane (Wesley Snipes). Deane thinks Hoyle is an easy target, but Hoyle, a former college player, takes him in their first meeting.

Deane offers Hoyle a business opportunity - they hustle people together for bigger money. They play the game, and eventually form a strong friendship. Their racial and business differences are forgotten when they do it on the court.

The men are drawn together by a mutual attraction - they both need money. Deane's wife wants to move out of their bad neighborhood, and Hoyle and his girlfriend need to pay off some bad debts to some mobsters.

Hoyle's girlfriend Gloria Clemente (Rosie Perez) thinks the answer to their financial problems



Billy Hoyle (Woody Harrelson), l. goes up against Sidney Deane (Wesley Snipes) in a game of one-on-one in the surprising funny "White Men Can't Jump."

is not on the court but on the game show "Jeopardy." She constantly tries to memorize the "World Almanac" so she can win everything on the show.

This film was a pleasant surprise, being one of the few movies to show how races can come together without being overly preachy or heavy-handedly sentimental. The racial concerns are present in the background of the

story, but it never seems forced.

Admittedly, the plot isn't too deep and many of the story elements are lifted from other movies ("The Hustler" and "The Defiant Ones" for starters). But there are some extremely funny parts, especially the mouthing off on the court about who's best and what the other players' mothers are doing. The comedy goes off the deep end when Hoyle starts mouthing

off bigger players while Deane tries to hold him back.

Both Harrelson, in his first major part in a film, and Snipes, gives the best performance of his young career, are perfectly matched for their roles.

OK, so "White Men" won't take home any little statuettes year from now, but it is definitely worth a few hours of your time if you want a few laughs.

MSC Town Hall presents

New Age Pianist

**Tom Hiel**



**Wednesday, April 8**  
**8 pm, Rudder Theatre**

Tix are available at Rudder Box Office, 845-1234 or Foley's at Post Oak Mall  
General admission: Student \$2 Non-student \$4

"A George Winston-styled keyboard player, Hiel exhibits a flare for prudent arrangements and an appetite for pop melodies" **BILLBOARD MAGAZINE**

Make money while gaining valuable work experience as a

**Battalion**

ADVERTISING REPRESENTATIVE

Must be a student enrolled in TAMU

Must have a car

Sale experience desired but not necessary

For more information call  
845-2696 845-2697

**Delta Sigma Pi**

INTERNATIONAL BUSINESS FRATERNITY

**3rd ANNUAL CHARITY Softball Tournament**

April 4, 1992

Double Elimination Tournament  
Co-Rec Teams (at least 4 women on the field)  
\$250 First Prize

PROCEEDS TO BENEFIT THE BRAZOS VALLEY REHABILITATION CENTER  
FOR MORE INFORMATION CALL DAVE BARION 775-2422