

we buy & sell new & used CD's

Shirts

LOTS of DANCE IMPORTS MUSIC

import posters

TEXAS MUSIC

marooned cd's • tapes • lp's

110 College Main

open 'til 10 p.m. (8 p.m. on Sunday)

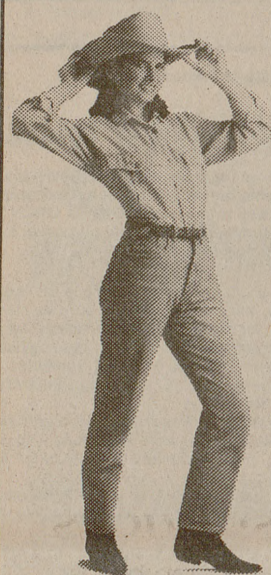
846-0017

INTRODUCING

QUICK CONTROL™

Now Weight Watchers Makes Losing Weight Simple.

Minimal Weighing And Measuring, Preplanned Menus, And Tips For Eating Out.



There's nothing complicated about it. New Quick Control makes losing weight simpler than ever.

Or, if you want more flexibility and food choices, ask about our Full-Choice option.

\$12

IN BRYAN CALL 846-7793

Come to the Weight Watchers meeting nearest you.

BRYAN Bryan Center 4202 East 29th at Rosemary Monday 9:30 am 5:15 pm Wednesday 11:30 am and 5:30 pm Thursday 5:15 pm Friday 9:15 am Saturday 10:00 am

Offer ends February 1, 1992. Offer valid at participating locations (South Texas, West Texas and Santa Barbara County, Cal.) areas 37, 96, 107 only. Fee for subsequent weeks \$10. Offer not valid with any other offer or special rate. Offer valid for new and renewing members only. Offer valid for Traditional Weight Watchers meetings only. Weight Watchers is a registered trademark of WEIGHT WATCHERS INTERNATIONAL, INC. ©WEIGHT WATCHERS INTERNATIONAL, INC. 1992. All rights reserved.

What's Up

WEDNESDAY

Inkshed Press: Pick up a free copy of our newsheet at these locations: Blocker, Half-price books, Marooned Records, Saigon Cafe. For information, call Jennifer Kim at 845-3452.

Adult Children of Alcoholics: General discussion at 6 p.m. Call CDPE at 845-0280 for more information.

Navigator Christian Fellowship: Reunion Fellowship -- 7:30 p.m. in Lounge D on the Quad.

Alcoholics Anonymous: General discussion at noon. Call the CDPE at 845-0280 for more information.

Texas Environmental Action Coalition (TEAC): General membership meeting at 7 p.m. Everyone interested in environmental concerns are invited to attend, whether student or member of the community. Organization works towards recycling and waste reduction, energy conservation and protection and restoration of endangered species and forests. Call Gary at 846-4713 (days) or Helen at 693-9990 (eves) for more information.

DPMA: Diskette sales and membership drive. 8 a.m. to 3 p.m. in the lobby of Blocker Building. For information, call Michael White at 693-1913.

THURSDAY

Mexican Student Association: General meeting and elections -- 7 p.m. in 401 Rudder Tower. Call Javier at 846-8441 or 847-9271 for more information.

Inkshed Press: Poetry workshop. 6:30 p.m. at Saigon Cafe (formerly An Nam Teahouse). Those interested in poetry chair position, please attend. Editor position open as well. Call Jennifer Kim at 847-1209 for more information.

Lutheran Student Fellowship: Evening prayer and supper -- 6:30 p.m. at the University Lutheran Chapel. Call Martin at 845-1835 for more information.

Texas A&M Cycling Team: Mandatory meeting -- 7 p.m. in 510 Rudder. Call John Henry Pommier at 847-1116 for more information.

The Brazos Valley Netware Users' Group of Texas: The division manager for Word Perfect Corporation will discuss Word Perfect Office -- 6 p.m. at the Anco Insurance building, 1733 Briarcrest Drive.

Items for What's Up should be submitted to The Battalion, 013 Reed McDonald, no later than three business days before the desired run date. Submissions are run on a first-come, first served basis. There is no guarantee an entry will run. If you have questions, call the newsroom at 845-3313.

Abortion issue faces fatal challenge

Continued from Page 1

Utah and Louisiana that will reach the court in which revisiting Roe will be unavoidable," she said. "I don't think the court wants to reach out unnecessarily in this case. The way review was granted confirms that intuition."

The Pennsylvania case will be argued in April with a decision expected by July.

The court was asked in competing appeals from Pennsylvania officials and abortion clinic operators to say point blank whether Roe vs. Wade remains the law of the land.

The court's brief order Tuesday was ambiguous.

The justices said they will study the Pennsylvania law's provisions but did not say flatly they will examine the 1973 ruling.

As the justices acted, dozens of anti-abortion protesters tried to block access to two downtown Washington abortion clinics while abortion rights activists escorted women to their appointments inside.

Hundreds of the demonstrators were arrested.

A massive demonstration is expected outside the Supreme Court building Wednesday.

The justices in 1989 allowed states to make it more difficult for women to obtain abortions, but stopped short of reversing the 1973 ruling.

In the Pennsylvania case, the 3rd U.S. Circuit Court of Appeals said recent high court rulings eroded the sweeping legal protection Roe vs. Wade gave to women seeking abortions.

The appeals court said states now may require doctors to tell women seeking abortions about fetal development and alternatives to abortion, and then require those women to wait 24 hours before ending their pregnancies.

Residents air concerns with TCA

Continued from Page 1

phy is closely related to violence, and I believe the national president of NOW said, 'Pornography is the concept, rape is the action.'

'I've heard that Highway 6 runs both ways and that if I don't like something I should change the channel, but I can't ignore what I see as a problem,' he said.

Other comments, ranging from compliments on improved picture quality and long business hours to complaints about TCA's policy of charging for additional cable outlets surfaced throughout the 90 minute meeting.

Bob Barker, owner of Barker Photography and Video, expressed concern that KAMU charged Bryan and College Station school districts to broadcast on the education access channel, something the current cable franchise agreement forbids.

'The manager at the KAMU studio, who is already being paid, puts one of the schools' video tapes into a VCR KAMU is using for its own programs, and transmits it to TCA with a microwave transmitter TCA bought and paid for,' Barker said.

'It doesn't cost KAMU anything to run the tape, so why did it cost College Station ISD \$200 to

run the state championship football game once?

'They're ripping you off,' he said.

Randy Rogers, manager of TCA Cable in Bryan-College Station, said all comments, both positive and negative, were welcome.

'I feel the meeting went great,' Rogers said. 'Input from the community is what we want, so we can evaluate the opinion of our service and provide for future needs.'

'We wanted to approach this meeting with an open mind as far as listening to what the customers want, and I think we accomplished that here tonight,' he said.

ENGINEERING & OFFICE SUPPLY WELCOME BACK AGS!

ONE-STOP SHOPPING FOR YOUR DRAFTING, ART & OFFICE SUPPLY NEEDS

2-DRAWER FILING CABINET NAVY BLUE \$29.95

USED DESKS STARTING AT \$49.95

USED STENO CHAIRS Starting at \$29.95

FOLDING TABLES SALE REG. 30 x 60 - \$51.99 \$72.99 30 x 72 - \$56.99 \$76.99

DRAFTING STOOL PNEUMATIC HEIGHT ADJUST \$87.50 REG. \$125.00 #7000-10

BRING IN THIS AD FOR 25% OFF 1992 CALENDARS (IN STORE)

DRAFTING TABLES 30X42 FOLD AWAY REG. \$220.00 \$164.95

SAUDER COMPUTER WORKSTATION #5137 SALE \$109.95 LIST. \$140.95

EDG DRAFTING KIT \$42.95

KOH-I-NOOR TECHNICAL PEN SET \$54.95 REG. \$108.00 #3165SP7 7-PEN

BOOKCASES OSULLIVAN WOOD LAMINATE 48" - \$79.99 60" - \$89.99 72" - \$99.99

DRAFTING LAMP \$10.95 REG. \$24.95

1418 Texas Ave. S. Redmond Terrace • College Station, Tx • 693-9553



SCOTT & WHITE CLINIC, COLLEGE STATION 1600 University Drive East

Serving The Brazos Valley

Alcohol & Drug Treatment Program Sharon Sandifer, C.A.D.C., NCAC II, Program Director Art Caylor, M.D., Medical Director

Allergy David R. Weldon, M.D.

Audiology Richard L. Riess, Ph.D.

Cardiology S. A. Gammenthaler, M.D. J. James Rohack, M.D.

Dermatology David D. Barton, M.D.

Family Medicine Art Caylor, M.D. Mark W. English, M.D. Richard A. Smith, M.D. Roque Villarreal, II, M.D. Robert Wiprud, M.D. Michael W. Norwood, D.O.

General Surgery Frank R. Arko, M.D. Dirk L. Boysen, M.D.

Health Education Sally Scaggs, M.S., R.D., L.D.

Internal Medicine James V. Bonds, M.D. Valerie Chatham, M.D. Larry Davis, M.D. Eileen Maria Frelter, M.D. David Hackethorn, M.D. Michael R. Schlabach, M.D. William R. Davis, M.D.

Obstetrics/Gynecology Sheila Bonds, M.D. James R. Meyer, M.D. William L. Rayburn, M.D. Charles W. Sanders, M.D. Sally Miller, R.N.C.

Ophthalmology Charles W. Akins, M.D.

Orthopedic Surgery Paul A. Wright, M.D.

Otolaryngology Michael J. Miller, M.D. R. Bruce Buechler, M.D.

Pediatrics Dayne M. Foster, M.D. Michael P. Marquardt, M.D. Dan Ransom, M.D. Mark Sicilio, M.D.

Psychology Jack L. Bodden, Ph.D. Patricia E. Tolciu, Psy.D.

Radiology Luis Canales, M.D.

Speech Pathology Anne Lueck, Ph.D., C.C.C.-S.L.P. Susan Scott, M.Ed., C.C.C.-S.L.P.

Call (409) 268-3322 For Appointment