

The Battalion

Pre-inaugural party

Dolly Parton headlines 1½-hour celebration for Richards, Bullock

AUSTIN (AP) — Entertainer Dolly Parton headlined a star-studded lineup of more than 1,000 Texas performers and a can of dancing hairspray at the pre-inaugural "Texas Our Texas" gala Monday night.

The 1½-hour performance celebrated today's inauguration of Gov.-elect Ann Richards and Lt. Gov.-elect Bob Bullock.

The Austin-comedy group Esther's Follies earned a standing ovation from Richards when the performers sang a song featuring the verse: "Keep the Texas state secure, high and wide as my coiffure" as a giant can of hairspray appeared on stage — a teasing reference to Richards' signature bouffant hairdo.

Before the performance, small Texas flags were passed out to the near capacity crowd. Despite the evening's gaiety, the threat of war in the Persian Gulf was not forgotten. The flags had yellow rosettes attached with ribbons reading, "The heart of Texas is with you."

After he finished his song, Kristofferson told the audience "Pray for peace tonight."

A crowd gathered around a cutout of Richards in a pink suit. There, they had paid \$10 to have their photos made.

"It is a little larger than life. But, you know, that's Ann," said Paul Bardagjy, who was selling the photographs.

Parton, a Grammy award-winning country singer, songwriter and actress, earned the most applause from the enthusiastic crowd. Parton, Nelson, Kristofferson and Jerry Jeff Walker were backed by the Grammy award-winning Austin-based band Asleep at the Wheel.

The band Little Joe y la Familia sang a Spanish love song; and San Antonio's Ballet de Folklorico de Navarro filled the stage with the clap of heels and the whirl of white, blue, magenta, orange and purple skirts.

San Antonio may again host Texas Open

SAN ANTONIO (AP) — Oak Hills Country Club may again host the Texas Open now that the Club at Sonterra has withdrawn from consideration as the site of the tournament.

"Sonterra wants to know if the tournament is coming or not," said Andrew Iosue, president of the San Antonio Golf Association, which organizes the event. "I can't blame them for doing this because the decision has dragged on for so long."

Kiyonori Higa, a Japanese real estate executive who owns Sonterra, said in a prepared statement Sunday the country club was pulling out because the decision "has become so controversial."

"It has been my intent since investing in San Antonio businesses to actively participate in community activities and to support the various charities," Higa said.

The University of Texas Longhorn Band kicked off the celebration, playing "Deep In The Heart Of Texas" as drill teams carrying Texas flags and mariachi bands marched around the star-shaped stage.

More than 14,000 people bought \$10 tickets to the gala, selling out the Frank Erwin Center.

Country stars Willie Nelson and Kris Kristofferson performed one song apiece, with Nelson singing his signature "On the Road Again," while Kristofferson sang "Me and Bobby McGee."

Policy prohibits helping disabled, prevents liability

DALLAS (AP) — Dallas Area Rapid Transit officials say a policy that prohibits drivers from helping elderly and disabled passengers with groceries or other packages is necessary to save money and prevent liability problems.

A 70-year-old woman was stranded in 30-degree freezing rain outside a grocery store because of the policy, critics say. The woman had four sacks of groceries and no one to help her carry them once she got home.

The driver for HandiRides, the agency's special transit service for the elderly and handicapped, said he couldn't help. A carryout clerk from the store later took the woman home.

The "no-help" policy is defended by DART officials, regardless of the circumstances.

Transit officials say it would cost more money, pose liability problems and raise questions about comparable transit service for all patrons if they helped the disabled or elderly further.

Marc A. Soto, manager of DART's "paratransit" service, said the agency's "curb-to-curb" policy allows drivers only to help passengers get on and off vans and taxis. They are refused further help with groceries or other items, he said.

"Where do you draw the line?" he said. "I wish I could reach out to every one of our 10,880 patrons, but I can't. The question boils down to one of economics."

Another complaint was from a 49-year-old man, who has crippling arthritis and uses a cane. He said he routinely is dropped off at the curb with groceries at his high-rise apartment building by HandiRides taxi drivers.

"They put me out on the curb and then it's 'bye, bye,'" Marvin Bigelow said.

DART has the strictest policy of any of the state's seven transit authorities.

Houston Metro's policy is simple. "We tell our drivers to treat the passenger the same way they would treat their mom or dad or grandpa."

"Where do you draw the line? I wish I could reach out to every one of our 10,880 patrons, but I can't. The question boils down to one of economics."

— Marc A. Soto, manager of DART's "paratransit" service

rents if they were on board," said Metro spokesman Tom Fox.

U.S. transit authorities are regulated by federal transportation regulations to deal with the disabled "respectfully and courteously."

DART spends \$7.7 million annually on HandiRides van and taxi service — about 6 percent of the transit agency's \$129.5 million yearly operating budget.

Patrons pay \$1 for a shared ride on vans and taxis and \$2 to ride alone in taxis. DART subsidizes about \$8.25 of each van and taxi trip.

A private contractor, Mayflower Contract Services, handles HandiRides. Four cab companies provide the taxi service. HandiRides averages about 75,000 van and taxi trips a month.

Police search for man connected with robbery

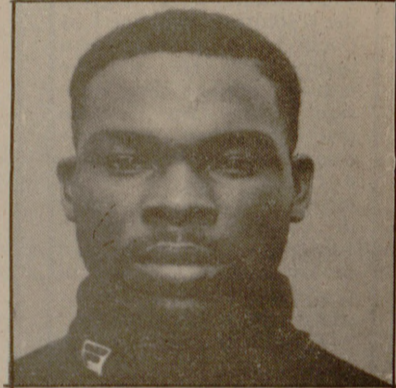
Brazos County Crime Stoppers needs your help to find Mark Douglas Shields, wanted by the Bryan Police Department for felony theft.

Shields, 24, is an African-American with brown hair and brown eyes. He weighs approximately 160 lbs. and is 5 feet 8 inches tall.

If you call Crime Stoppers and your information leads to Shield's arrest, Crime Stoppers will pay you \$250. When you call you will be given a special coded number to protect your identity, so you won't have to testify in court.

Crime Stoppers also pays for information on any felony crime or the location of any wanted fugitives.

So call Crime Stoppers today at 775-TIPS.



Mark Douglas Shields

TCA Cable broadcasts Inaugural Day events

TCA Cable is broadcasting Inaugural Day events today starting with a people's march to the state capitol and ending with the inaugural parade.

The people's march will begin at 10 a.m. The march will be followed by the inaugural ceremony at noon. A luncheon, interviews

and commentary will continue until 2 p.m.

Gov. Ann Richards then will address Texas school children from the governor's mansion. The inaugural parade is scheduled for 3 p.m. to 4 p.m.

TCA Cable will carry these events on Channel 25, normally the HSE channel.

Candlelight vigil for peace scheduled today

A march and candlelight vigil for peace in the Middle East is scheduled today.

The peace march will begin at 5:30 p.m. in front of the Aca-

demie Building and travel to the corner of University Drive and Texas Avenue. A candlelight vigil will be at 6 p.m. at the corner near the Christmas tree.

Anyone with story suggestions can call BATTIPS, The Battalion's phone line designed to improve communication between the newspaper and its readers.

The BATTIPS number is 845-3315.

BATTIPS

WINTER ALLERGY STUDY
Individuals 12 and older with winter allergy symptoms or known Mountain cedar-allergic individuals to participate in a research study. Cash incentive for those who complete the study.

\$100 \$100 \$100 \$100 \$100 \$100 \$100 \$100 \$100 \$100 \$100

URINARY TRACT INFECTION
Do you experience frequent urination, burning, stinging or back pain when you urinate? Paull Research will perform FREE urinary tract infection testing for those willing to participate in a short investigational research study. \$100 incentive for those who qualify.

\$100 \$100 \$100 \$100 \$100 \$100 \$100 \$100 \$100 \$100 \$100

\$100 \$100 \$100 \$100 \$100 \$100 \$100 \$100 \$100 \$100 \$100

ADULT SORE THROAT STUDY
One Day Test, No Blood Drawn
Wanted individuals 18 years and older to participate in an investigational drug research study. \$100 incentive for those chosen to participate.

\$100 \$100 \$100 \$100 \$100 \$100 \$100 \$100 \$100 \$100 \$100

\$200 \$200 \$200 \$200 \$200 \$200 \$200 \$200 \$200 \$200 \$200

2 HOUR THERMOMETER USE STUDY
Individuals with temperature of 99.5 F or higher to participate in a thermometer use study for approximately two hours. No medications or blood draw. \$200 for those who complete the study.
After hours & weekends call 361-1500

\$200 \$200 \$200 \$200 \$200 \$200 \$200 \$200 \$200 \$200 \$200

\$400 \$400 \$400 \$400 \$400 \$400 \$400 \$400 \$400 \$400 \$400

HIGH BLOOD PRESSURE STUDY
Individuals with high blood pressure, either on or off blood pressure medication to participate in a high blood pressure research study. \$300 incentive. BONUS: \$100 RAPID ENROLLMENT BONUS for completing study.

\$400 \$400 \$400 \$400 \$400 \$400 \$400 \$400 \$400 \$400 \$400

CALL
PAULL RESEARCH INTERNATIONAL
776-0400

LOUPOU'S BOOKSTORES

THREE CONVENIENT LOCATIONS!

Northgate across from Post Office Redmond Terrace next to Academy Southgate on George Bush

Classes begin in January at College Station Conference Center

bar/bri
PROFESSIONAL TESTING CENTERS

Prepare for the January 19th Exam

GMAT

review

The Difference Between Admission To The MBA Program of Your Choice... And Not Being Admitted At All!

Enclosed is \$45. Enroll me at the TAMU student early enrollment discount tuition of \$295 (Reg. tuition is \$495)

I would like more information about your course.

Name: _____
Address: _____
City/St./Zip: _____
Phone: _____
I plan to take the GMAT Exam on _____, 19__

1-800-274-3926

A subsidiary of Harcourt Brace Jovanovich. Also offering Conviser-Duffy-Miller CPA Review, LSAT MCAT & SAT

Mail to:
bar/bri GMAT Review
1415 Fannin, Suite 250
Houston, TX 77002

CINEPLEX ODEON THEATRES
3:30 BARGAIN MATINEES ALL SHOWS BEFORE 6:00 P.M. ON SAT, SUN & HOLIDAYS
POST OAK THREE
1500 Harvey Road, 693-2796

HOME ALONE (PG)
7:15 9:40

KINDERGARTEN COP (PG-13)
7:30 9:45

AWAKENINGS (PG-13)
No Passes
7:00 9:30

CINEMA THREE
315 College Ave. 693-2796

DANCES WITH WOLVES (PG-13)
8:00

LIONHEART (R)
No Passes
7:15 9:30

GODFATHER III (R)
7:00

Campus Directories Available

If you ordered a 1990-91 Campus Directory and haven't picked it up, you may get it in the Student Publications business office, room 230 Reed McDonald Building, 8 a.m. - 5 p.m. Monday - Friday.

If you did not order a Campus Directory, you may purchase one for \$3, plus tax, in 230 Reed McDonald.

UNIVERSITY COMMUNICATIONS
THE TEL AMERICA CONNECTION

Professional choice for Long Distance
In Business since 1984

- ◆ Guaranteed Savings
- ◆ 10.5¢ per minute in TEXAS
- ◆ No Monthly Service Charge
- ◆ Call At Any Time To Anywhere In The USA
- ◆ Travel Services

1701 Southwest Parkway, Suite 100
College Station, Texas 77840
Call 693-5874

Jump right in . . .
and get involved!!

MSC

OPEN HOUSE II

SATURDAY, JANUARY 19, 1991
2:00 - 6:00 p.m.

MEMORIAL STUDENT CENTER - FIRST & SECOND FLOORS

Come meet representatives of over 100 recognized student organizations.

Entertainment, door prizes, & much more!

DON'T MISS OUT ON THE FUN!!

CATCHING THE

FORM

COLOR

MOTION

ART EXHIBITION IN
RUDDER EXHIBIT HALL, TAMU

JANUARY 17 - FEBRUARY 17
OPEN DAILY 8 AM TO 11 PM
FOR TOURS CALL 845-8501