

Mexicans pull together to clean up mountain in honor of Earth Day

MEXICO CITY (AP) — Mexicans marked Earth Day by cleaning up a mountain on the edge of Mexico City, one of the world's most polluted cities, holding a parade and attending exhibits, lectures and concerts on Sunday.

About 100 people, including many children, braved a cloudy, chilly day on Ajusco Mountain on the southern edge of Mexico City to pick up paper, bottles, old tires and other trash left by the thousands who use it for weekend outings.

Singer Emmanuel said in a television interview from Ajusco that the mountain, La Marquesa and other parks

Mexico is among the countries with the highest rates of natural resource depletion.

— Gabriel Quadri, ecological adviser

around the capital were so full of trash that he rejected them when searching re-

cently for the scene for a video.

A newspaper notice announcing the cleanup outing recommended that anyone going "bring his own food and not leave more trash at the place."

A parade sponsored by the Group of 100, an artists and intellectuals' environmental defense organization drew a small crowd with several floats promoting conservation and taking aim at the Laguna Verde nuclear power plant, a 17-year-old project still undergoing testing, and a proposed toxic waste dump in Texcoco on the eastern edge of the city.

While Mexico City's air contamination

Over the past 30 years, the country has lost 95 percent of its tropical forests, largely for socio-economic reasons.

— Notimex, Mexican news agency

— ozone levels surpass the maximum acceptable level almost daily — is the coun-

try's most publicized pollution problem, ecological groups increasingly are denouncing widespread deforestation, the slaughter of marine turtles, water contamination.

Gabriel Quadri, the Mexico City government's ecological adviser, said Mexico was among the countries with the highest rates of natural resource depletion.

Over the past 30 years, the country has lost 95 percent of its tropical forests, largely for socio-economic reasons, the government news agency Notimex quoted Quadri as saying.

Rec Sports Highlights



sponsored by

McDonald's Mickey D's Arcade™
Now open at the Univ. Dr. Location

IM GAME PLAN

Entries Open: April 16 Entries Close: April 26

Fun Run

No Entry Fee! Competition Date: April 28

B/CS Area Merchants Sponsor Slowpitch Softball Tournament

Teams will compete in "one of Texas' largest tournaments every year," April 27-30 at Bryan Regional Athletic Complex, Central Park in College Station. The B/CS Merchants' Annual Slowpitch Softball Tournament attracts huge numbers of participants with prizes ranging from trophies to gift certificates. Entry fee is \$125 per team, and the deadline for entry is April 25. Family recreational activities, arts and crafts, and live enter-

tainment will be presented in addition to the tournament - part of the 1990 Bryan Sportsfest. For more information, call Tom at 845-7826.

Acknowledgements: McDonald's Rec Sports Highlights is sponsored by your local McDonald's Restaurant at University Drive, Manor East Mall, Hwy 21, Texas Ave. at SW Parkway and Post Oak Mall. This ad is a creation of Mark Figart and P.J. Miller. Photographs are by Rec Sports photographers.

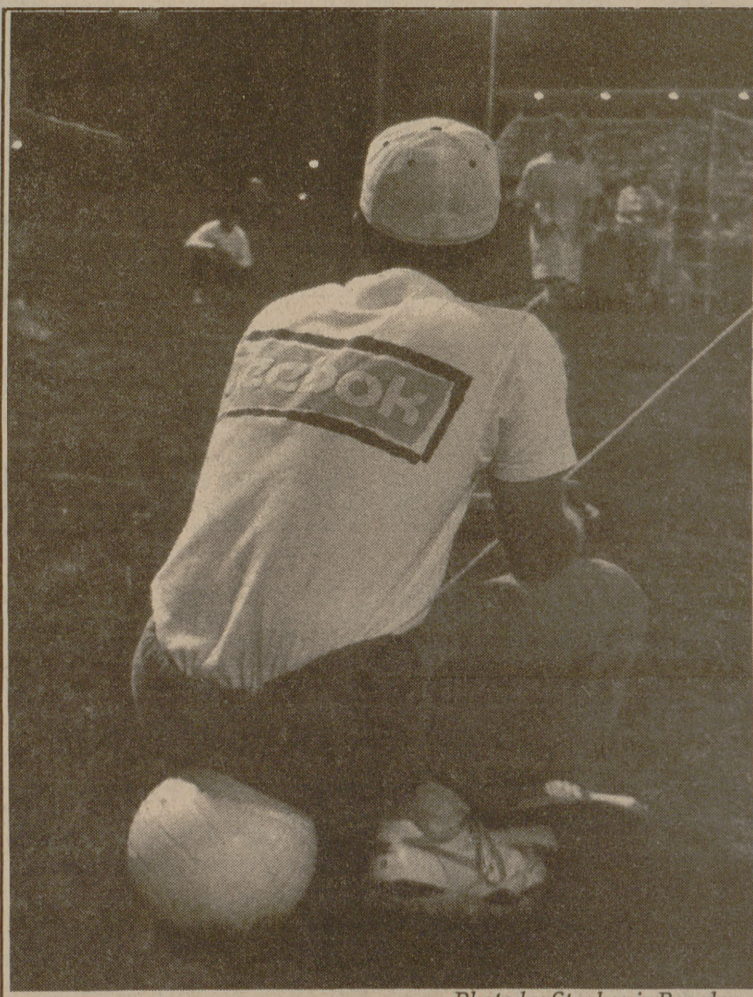


Photo by Stephanie Bearden

CHAMPIONS!!

Recreational Sports would like to congratulate the Spring 1990 winners of the following events:

Putt-Putt Golf

Men's
Garrett Jones

Women's
Allison Barritt

Men's Doubles
**Garrett Jones
Todd Lackey**

Ties men's record set in 1968!

Women's Doubles
**Heather Hortman
Cynthia Bradstead**

CoRec Doubles
**Terry Trevino
Shelda Blondell**

Superstars

Men's
Michael Terzian
Women's
Kris Wilson

3-Point Shot

Men's
Jody Zaruba
Women's
Kelly Yeary

Free Throw

Men's
Daniel Peveto & Harvey Holub

Women's
Kris Wilson
20 consecutive ties record!

Baseball Hitting

Scott Roark
New record, with 46!

Badminton Singles

Men's A
Brian Lee

Men's B
Gary Webster

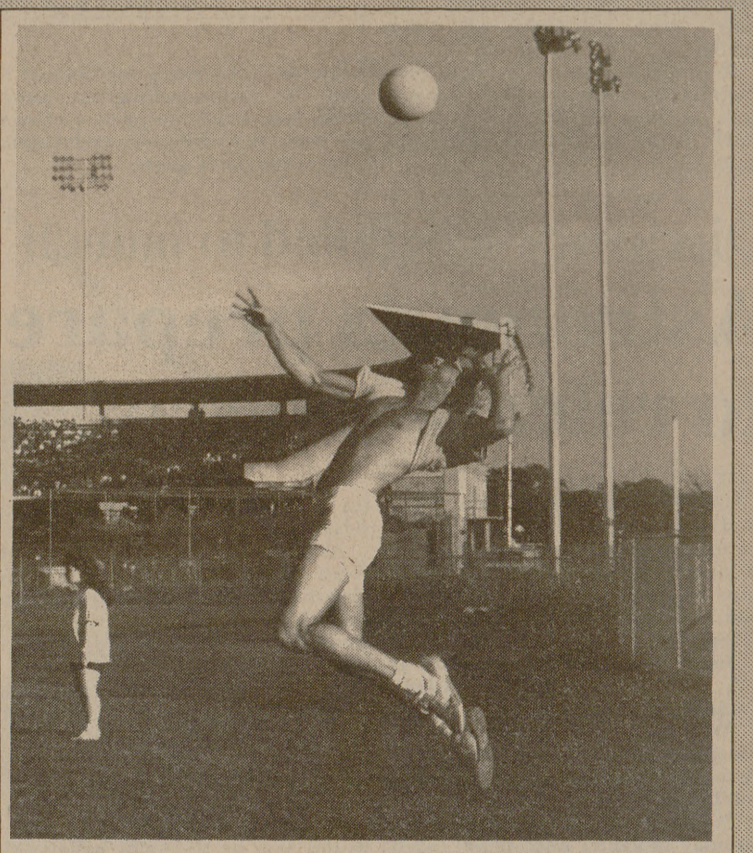
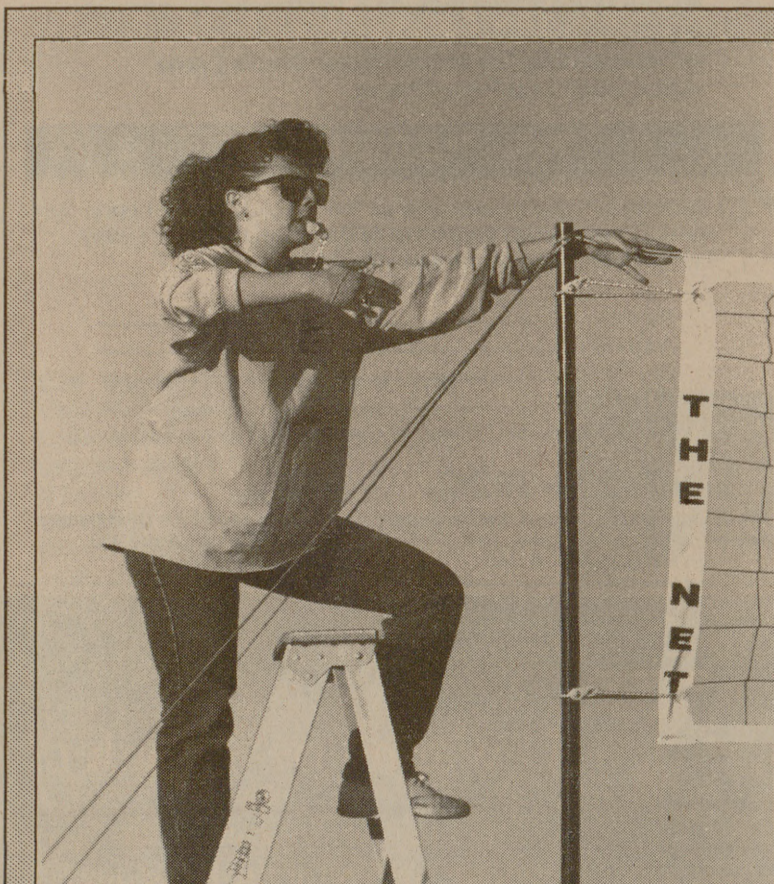
Men's C
Greg Myers

Women's A
Jackie Mullins

Women's C
Yi-Te Chu

Men's Open
Ching-Yun Wang

Women's Open
Lilian Tan



Photos by Stephanie Bearden



Photo by Stephanie Bearden

REC SPORTS WEEKLY CALENDAR

MONDAY April 23	TUESDAY April 24	WEDNESDAY April 25	THURSDAY April 26	FRIDAY April 27	SATURDAY April 28	SUNDAY April 29
			<p>Entries Close:</p> <p>Fun Run</p>	SOA Picnic	Fun Run	