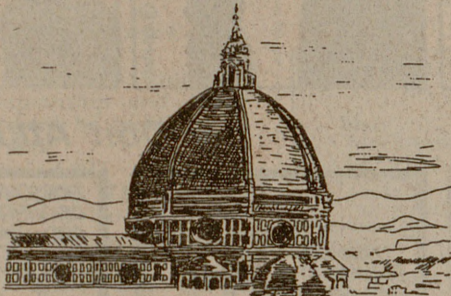


MOVING OUT? DON'T LET YOUR DEPOSIT BECOME FREE MONEY FOR YOUR MANAGER

SUBMIT YOUR 30-DAY NOTICE OF INTENT TO VACATE TODAY!

Brought to you by the Off Campus Aggies and the Off Campus Center.

TAMU Italian Semester Spring 1990



Study and live at the TAMU Center, "Santa Chiara," in Castiglion Fiorentino

INFORMATIONAL MEETING:
WHERE: MSC ROOM 222
WHEN: WEDNESDAY, 15 NOVEMBER 2:00 - 3:30

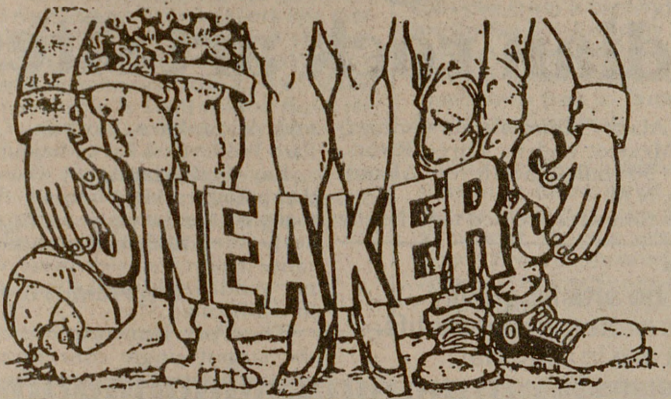
FOR MORE INFORMATION, CONTACT
Study Abroad Office
161 Bizzell West, Phone: 845-0544

NOVEMBER 13 - 18 LUNCH just

\$ 1.99

INCLUDING, SANDWICHES, ENCHILADAS, BURRITOS, TACOS, CHALUPAS, NACHOS, CHIPS & HOT SAUCE

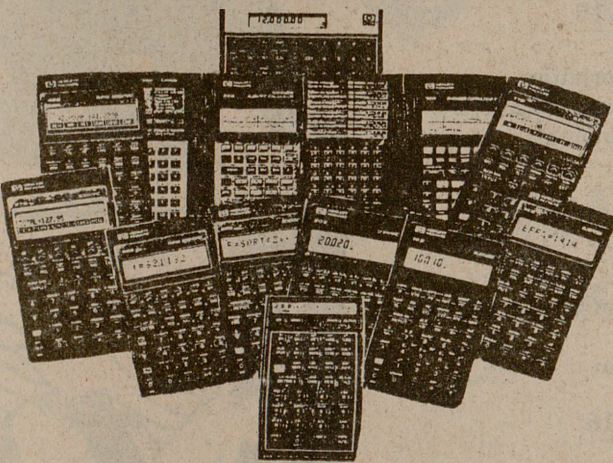
SPECIAL GOOD 11-4 DAILY
A VALUE UP TO \$5.95



504 HARVEY ROAD COLLEGE STATION
696-8888

With the right HP calculator, there's no telling what you can achieve.

A+



10B.....	\$37.50
12C.....	\$65.00
14B.....	\$60.00
17B.....	\$82.50
19B.....	\$132.00
20S.....	\$37.50
21S.....	\$45.00
22S.....	\$45.00
32S.....	\$52.50
42S.....	\$90.00
27S.....	\$82.50
28S.....	\$176.25
41CV.....	\$132.00
41CX.....	\$186.75

HEWLETT
PACKARD

Professional Computing

AUTHORIZED HEWLETT-PACKARD DEALER
505 CHURCH STREET COLLEGE STATION, TEXAS 77840 409/846-5332

What's Up

Tuesday

STUDENT GOVERNMENT: will have a Senate meeting at 7:30 p.m. in 204 Harrington. Call Ty Clevenger at 845-3051 for more information.

PLACEMENT CENTER: will have job search strategies from 5:30 to 7:30 p.m. in 510 Rudder.

WOMEN'S STUDIES FILM SERIES: will have a festival of French women directors featuring "One Sings, The Other Doesn't" at 7 p.m. in 604B Sterling Evans Library.

AGGIE ALLIANCE: will meet at 7 p.m. in 224 MSC.

AGGIE TOASTERS: will meet at 8:30 p.m. in 502 Rudder. For more information call Robert at 268-1447.

PHI BETA SIGMA: Dr. Koldus will speak on positive people skills at 8:30 p.m. in 226 MSC.

TAMU SYSTEM ASSOCIATION OF PROFESSIONAL SUPPORT STAFF: Neil Barnhill will discuss wise holiday spending at noon in 410 Rudder. Call Peggy Ritchey at 845-5311 for more information.

SOCIETY OF WOMEN ENGINEERS: will have a dinner, speaker and elections for vice president and historian at 6 p.m. at Westinghouse.

SOCIETY OF PROFESSIONAL JOURNALISTS: will meet at 7 p.m. in 014 Reed McDonald.

MSC RECREATIONAL: will meet at 5 p.m. in 124 MSC. Call Kristie Buchman at 847-0266 for more information.

RUSSIAN CLUB: will discuss International Week at 5:30 p.m. at Razgovor table. For more information call Aleks at 693-5381.

COLLEGE REPUBLICANS: Dr. Lynn Gillette will speak at 8:30 p.m. in 225 MSC. For more information call Rob Giesecke at 260-9988 or 774-1193.

BIOMEDICAL SCIENCE ASSOCIATION: will have a meeting and mystery speaker at 7 p.m. in 201 Biomedical Sciences. For more information call David at 696-0275.

FELLOWSHIP OF CHRISTIAN ATHLETES: will have a Christian fellowship at 9 p.m. in Cain Hall film room. Call Dusty Gotcher at 696-6687 for more information.

MEDICINE TRIBE: will meet at 5 p.m. in front of the Academic Building. For more information call Todd Honeycutt at 846-9447.

YOUNG CONSERVATIVES OF TEXAS: Justice Terry Means of the 10th Court of Appeals will speak at 7 p.m. in 410 Rudder. For more information call Sharon at 764-6541.

SCUBA CLUB: will meet at 7 p.m. in 229 MSC.

TAMU NUTRITION SOCIETY: will meet at 7:30 p.m. in 127 Kleberg.

CARIBBEAN STUDENTS ASSOCIATION: will meet at 7 p.m. in 139 MSC.

COMPUTER USERS GROUP: will meet at 3:30 p.m. in 204C Sterling Evans Library.

INROADS/DALLAS-FT. WORTH: will have recruiting presentations for talented undergraduate black, Hispanic and American Indian business, engineering and science majors at 7 p.m. in 342 Zachry.

P.A.I.D.: will meet with guest speaker at 7 p.m. in 305 Fernier.

RECREATIONAL SPORTS: entries close for sports trivia bowl at 5:30 p.m. in 159 Read.

FORT WORTH HOMETOWN CLUB: will meet at 7 p.m. in 601 Rudder.

NARCOTICS ANONYMOUS: will have a step-study meeting at 8:30 p.m. For more information call the C.D.P.E. at 845-0280.

ALCOHOLICS ANONYMOUS: will have a general discussion at noon. For more information call the C.D.P.E. at 845-0280.

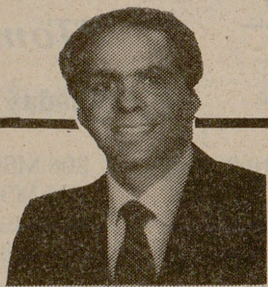
ON-CAMPUS CATHOLICS: students from six different religious traditions will share their beliefs at 9 p.m. in the All Faiths Chapel.

RELATIONSHIPS MINI COURSE: the last class will meet at 7 p.m. at St. Mary's Student Center.

TAMU ROADRUNNERS: will meet at 8:30 p.m. in 407 A&B Rudder. For more information call Tony Rodriguez at 847-2270.

For Wednesday's What's Up entries, please see page 9.

When you finish reading **The Battalion** pass it on to a friend, but please... don't litter!



MOSES CHIROPRACTIC CENTER

1907 Texas Ave. So.
College Station
69MOSES
696-6737

Did you know:

- Work accidents will cover 100% of your care?
- Your parents insurance will usually cover 80% or more of your chiropractic care after meeting the deductible?
- Auto accidents will pay 100% of chiropractic care?
- Lincoln National will cover chiropractic care?

Do you need Chiropractic Care?

- | | | |
|------------------------------------|--|---|
| <input type="checkbox"/> Headaches | <input type="checkbox"/> Shoulder Pain | <input type="checkbox"/> Painful Joints |
| <input type="checkbox"/> Back Pain | <input type="checkbox"/> Arm/Leg Pain | <input type="checkbox"/> Arthritis |
| <input type="checkbox"/> Neck Pain | <input type="checkbox"/> Hip Pain | <input type="checkbox"/> Bursitis |
| <input type="checkbox"/> Numbness | <input type="checkbox"/> Cold Hands/Feet | <input type="checkbox"/> Stiffness |

These are the most common signals of a pinched nerve between your vertebrae. If you've marked any of the above, you need a spinal examination.

FREE Initial Consultation Exam and necessary X-Rays. **CALL NOW**
This Week Only.
11-13-89 - 11-17-89 **696-6737**

Are you taking the Jan. 27, 1990 GMAT?

Here are 3 reasons why you should sign up for the Kaplan Prep Course NOW:

1. Classes are scheduled with A&M's vacation schedule
2. You can study during your winter break.
3. Tuition increases Nov. 15

Call us today for more information.

696-3196

Classes Starting Nov. 20

STANLEY H. KAPLAN
Take Kaplan Or Take Your Chances

Open 24 Hours

kinko's
the copy center

201 College Main
846-8721

Starving Students

BUDGETING HOUSEWIVES!
GET PAID TO EAT!!

HOW?

Be one of the first 200 people on a consumer taste panel for a new microwave meat loaf product.

WHERE?

Texas A&M University
Kleberg Animal Science Building
Room 345

THE CATCH?

We only need 30 minutes of your time.

HOW MUCH?

\$5.00 to each of the first 200 participants.

WHEN?

Tues. & Wed., Nov. 14th & 15th
9:00 to 12:00 a.m.

FREE SCHOLARSHIP INFORMATION FOR STUDENTS WHO NEED MONEY FOR COLLEGE

Every Student is Eligible for Some Type of Financial Aid Regardless of Grades or Parental Income.

- We have a data bank of over 200,000 listings of scholarships, fellowships, grants, and loans, representing over \$10 billion in private sector funding.
- Many scholarships are given to students based on their academic interests, career plans, family heritage and place of residence.
- There's money available for students who have been newspaper carriers, grocery clerks, cheerleaders, non-smokers... etc.
- Results GUARANTEED.

CALL ANYTIME For A Free Brochure (800) 346-6401



BECKER CPA REVIEW



OUR PASSING RATE IS 70%
In 100 cities throughout the nation.

Send to: Becker CPA Review Course, Oak Creek Business Park, 3910 North Freeway, Ste. J, Houston, TX 77022 or call (713) 692-7186

Name: _____

Address: _____

City & State: _____

Phone: (____) _____

FOR YOUR FREE INVITATION TO THE FIRST CLASSES
135,000 BECKER CPA ALUMNI
HAVE PASSED THE LAST PART OF THE CPA EXAM SINCE 1957

\$100 \$100 \$100 \$100 \$100 \$100 \$100 \$100 \$100 \$100 \$100 \$100
\$100 \$100 \$100 \$100 \$100 \$100 \$100 \$100 \$100 \$100 \$100 \$100
IRRITABLE BOWEL STUDY \$100
Symptomatic patients with recent physician diagnosed, irritable bowel syndrome to participate in a short study. \$100 incentive for those chosen to participate. \$100 \$100 \$100 \$100 \$100 \$100 \$100 \$100 \$100 \$100 \$100 \$100

\$100 \$100 \$100 \$100 \$100 \$100 \$100 \$100 \$100 \$100 \$100 \$100
\$100 \$100 \$100 \$100 \$100 \$100 \$100 \$100 \$100 \$100 \$100 \$100
PAINFUL MUSCULAR INJURIES \$100
Individual with recent lower back or neck pain, sprain, strains, muscle spasms, or painful muscular sport injury to participate in a one week research study. \$100 incentive for those chosen to participate. \$100 \$100 \$100 \$100 \$100 \$100 \$100 \$100 \$100 \$100 \$100 \$100

\$300 \$300 \$300 \$300 \$300 \$300 \$300 \$300 \$300 \$300 \$300 \$300
\$300 \$300 \$300 \$300 \$300 \$300 \$300 \$300 \$300 \$300 \$300 \$300
HIGH BLOOD PRESSURE STUDY \$300
Individuals with high blood pressure, either on or off blood pressure medication daily to participate in a high blood pressure study. \$300 incentive for those chosen to participate. \$300 \$300 \$300 \$300 \$300 \$300 \$300 \$300 \$300 \$300 \$300 \$300

\$100 \$100 \$100 \$100 \$100 \$100 \$100 \$100 \$100 \$100 \$100 \$100
\$100 \$100 \$100 \$100 \$100 \$100 \$100 \$100 \$100 \$100 \$100 \$100
FEVER STUDY \$100
Short at home study to evaluate individuals 17 years and older who have a temperature over 100° f. \$100 incentive for those chosen to participate. Nights and weekends call 361-100 1500. \$100 \$100 \$100 \$100 \$100 \$100 \$100 \$100 \$100 \$100 \$100 \$100

\$100 \$100 \$100 \$100 \$100 \$100 \$100 \$100 \$100 \$100 \$100 \$100
\$100 \$100 \$100 \$100 \$100 \$100 \$100 \$100 \$100 \$100 \$100 \$100
Cold Study \$100
Individual 18 years & older with active cold symptoms to participate in a 1 day Cold Study with an over-the-counter cold medication. No blood drawn. \$100. incentive for those chosen to participate. \$100 \$100 \$100 \$100 \$100 \$100 \$100 \$100 \$100 \$100 \$100 \$100

Hacky Cough-Bronchitis-Pneumonia

We are looking for these symptoms in individuals to participate in a short study to monitor and treat your illness. Free chest x-ray, EKG and monetary incentive for those chosen to participate.

CALL PAULL RESEARCH
INTERNATIONAL
776-0400