

Dillard's is pleased to announce the formation of the Spring '89 College Advisory Board



The Dillard's College Advisory Board is being formed with the intention of developing a direct communication link with the Texas A&M University student body. Our goal is to use this feedback in a constructive manner to better serve the student customer.

Application are available for college men and women at Customer Service and are due Feb. 1.

Contact Pam Johnsen at 764-0014

Dillard's

POST OAK MALL, HARVEY ROAD AT HIGHWAY 6 BYPASS, COLLEGE STATION

It's Back!

MSC Open House II

Over 90 student organizations, student services, and academic colleges will be answering questions and giving out information on how you can make this semester one to remember!

Or come by and enjoy our entertainment

- Town Hall comedian
- OPAS Pianist
- Womens' Chorus Octet
- Aggie Wranglers
- Visual Art painting

Plus many giveaways such as Putt Putt passes, tickets for two to Opas production "My One and Only", tickets to Variety Show, and gift certificate to Ferguson and Co.



Saturday - January 21, 1989
4 p.m. - 8 p.m.
Memorial Student Center

World/Nation

Botha stable, coherent after having mild stroke

CAPE TOWN, South Africa (AP) — President P.W. Botha suffered a stroke at home Wednesday, but was "clear-minded" and might appoint a Cabinet member as acting president, his office said.

Botha, who turned 73 on Jan. 12, was in stable condition at No. 2 Military Hospital in the Cape Town suburb of Wynberg after suffering a mild stroke, his office said. No further details were released.

Botha's health generally has been excellent since he took charge of South Africa's white-run government as prime minister in 1978. Under a new constitution, he became president in 1984.

Elize Botha, the president's wife of 46 years, and some of their five children came to the hospital to be with him, state radio said.

Botha was hospitalized shortly after 8 a.m., according to the South African Broadcasting Corp.

Botha's office said he was "quite clear-minded" and was likely to appoint one of his Cabinet ministers as acting president on Thursday.

According to South Africa's Constitution, the president can appoint a Cabinet minister to fill in for him temporarily. If the president is inca-

pacitated, the Cabinet can elect one of its members as acting president.

Botha has refused to comment on his possible retirement. There has been intense speculation, but no consensus, about which Cabinet member might be selected by the National Party as Botha's successor.

Among those mentioned as presidential contenders are Foreign Minister Pik Botha, who is not related to him; National Education Minister F.W. de Klerk; Constitutional Development Minister Chris Heunis; Finance Minister Barend du Plessis; and Defense Minister Magnus Malan.

None of these men is considered likely to make fundamental changes in current National Party policy, although Pik Botha is viewed as slightly more liberal than the others.

The stroke occurred a few days after Botha returned to Cape Town from a month-long holiday at his coastal vacation home. On Friday, he was to meet members of Namibia's territorial Cabinet to discuss the planned transition to independence by year's end.

Pik Botha said he would chair the meeting with the Namibian officials. Parliament is due to open Feb. 3,

and there has been widespread speculation that President Botha will announce a general election to take place in late April. National Party leaders have suggested the election because they believe their opponents on both the left and right are in disarray.

During his years in power, Botha has maintained the National Party's political dominance despite criticism from the anti-apartheid movement and from extreme whites.

He pushed through the first significant racial reforms undertaken during the National Party's 40-year rule, such as legalization of interracial marriages and abolition of laws that restricted black movements.

But he has refused to negotiate with the African National Congress guerrilla movement or to release ANC's jailed leader, Nelson Mandela. Botha has said he would even discuss the possibility of a person, one-vote system in South Africa, where the 5 million whites control the government and economy while the 26 million blacks have a vote in national affairs.

Newly opened prison doesn't disrupt quiet of upstate New York

CAPE VINCENT, N.Y. (AP) — Thieves, drug-pushers and other hoodlums from New York City arrive in this scenic vacation land aboard chartered jets. They stay in brand-new accommodations, savoring the peaceful charm of the shore of the St. Lawrence River, more than 300 miles from the Big Apple.

They come to go to jail. They are men like 37-year-old Alan Foster, who says he has been in and out of New York City's Riker's Island jail so many times he has lost count.

"I'm not pleased about being so far away from home, but compared to Riker's Island, this place is all right," says Foster, who was sentenced this time to one year in jail for illegal possession of stolen credit cards.

Cape Vincent in upstate New York is now the home of Riverview Correctional Facility, a 700-bed jail built in less than a year to house criminals from this country's largest city.

An identical jail also was built by New York City in Ogdensburg, about 40 miles to the north. Both opened in August and were filled in a month.

"I don't know what we would have done without the upstate jails," says Tom Antanan, a spokesman for the New York City Department of Correction. "They opened up just in time."

New York City's jail population has surged to more than 17,000 inmates, largely because of beefed-up drug enforcement, Antanan says.

He says the city is building more jails in lower Manhattan, on Staten Island and is considering buying more barges to board prisoners and adding more cells at Riker's Island.

The city spent \$110 million to build the jails and will pay \$40 million a year to operate them under a 10-year contract with the state Department of Correctional Services.

H. Otis Radley, a town supervisor

in this community of 1,800, says the jail is providing jobs and should lead to more development, maybe even a drug store or another gas station.

Critics of the jail, which is located on a main road near a high school and a state park, included Radley's brother, Jerry, who runs a trailer park. He and others were afraid it would hurt business.

"I wasn't too happy with the idea when it started," says Elmer Gleason, manager of Cedar Point State Park and six other state parks along the river. "But now I just hope, once they put some trees in and do some landscaping, that it will just be a forgotten thing."

He says that judging from reactions during the construction of the prison this summer, the fears that a prison would drive away tourists probably were unfounded.

"People see it as an attraction, just another thing to come and look at when they're tired of sitting by the river," Gleason says.

Some worry that the prison will change the homey atmosphere of the community, where car keys are left in ignitions, bicycles are not locked in garages and people are friendly.

Inside the fences, guards proudly show off the new washing machines, the gleaming wood floor in the gymnasium and the walk-in freezers in the cafeteria.

Inmates talk about how good the food is, how professional the guards are and how the toughest adjustment may be getting accustomed to only being able to watch three channels on television.

Inmate Foster says that when he stepped off the plane and looked around he forgot about the whispers onboard of the trip being a bluff, especially when he saw the shotgun-armed guards greeting him as he stepped through the doorway.

"I didn't know where I was, but I knew wherever it was, we weren't welcome," he said.

Trade deficit rises sharply in November

WASHINGTON (AP) — The U.S. trade deficit ballooned to \$12.5 billion in November, the biggest imbalance in five months, the government said Wednesday.

Many private economists say even the Reagan administration viewed the report as a disappointing indication of how deep the country's trade problems are.

The Commerce Department said the trade gap was 22 percent larger than October's \$10.3 billion deficit, reflecting a surge in imports, particularly for business capital goods, and a slight drop in exports.

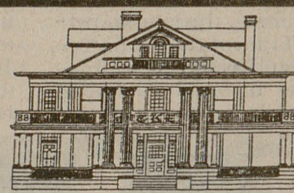
"We have a serious competitiveness problem in this country," Lawrence Chimierne, head of the WEA Group, an economic consulting firm in Ball Cynwyd, Pa., said. "There's a limit to how much you can improve by cutting costs and driving the dollar lower."

At the White House, spokesman Marlin Fitzwater said the November performance was of concern but "we trust this is an aberration and does not change the overall trend."

Even with the November deterioration, the trade deficit for the first 11 months of 1988 was running at an annual rate of \$137.3 billion, almost 20 percent below the all-time imbalance of \$170 billion set in 1987.

Departing Commerce Secretary C. William Verity, a top administration trade expert, said the November report was disappointing evidence that the country's trade problems are far from being solved. He said the rapid pace of improvement in the first part of 1987 had leveled off in recent months.

"All of this means that we have a long way to go," Verity said in a statement. "We must continue to improve our efficiency and quality at home and pursue our efforts to reduce trade barriers abroad."



Tau Kappa Epsilon TKE Spring Rush '89

- | | | |
|-------------------------|----------|---------------------------------------|
| Wednesday, January 18 | 7:00p.m. | IFC Fraternity of Life Seminar Rudder |
| Thursday, January 19 | 4:31p.m. | Smoker-Coat & Tie |
| Thursday, January 19 | 8:31p.m. | Party-TKE House |
| Saturday, January 21, | 4:31p.m. | Smoker-Coat & Tie |
| Saturday, January 21, | 8:31p.m. | Party-TKE House |
| * Monday, January 23 | | TKE FYI Smoker Rudder Tower |
| * Wednesday, January 25 | | Crush Rush |

* Indicates invitation only

For Information Call:
Scott Reagan-President
822-6004
Darren Smith-Rush Chairman
693-3495

