

# Dry weather keeps bonfire injuries minimal

By Timothy J. Hammons  
Staff Writer

**HEADACHE!**  
At bonfire cut, that call means a tree is falling. There are only a few seconds to get out of the way before it lands. However, inanimate objects — such as a truck — cannot heed the warning.  
Redpot (bonfire construction leader) Pat Henney, a senior civil engineering major, said several cadets were cutting down a tree during the Corps' first bonfire cut when the wind picked up and pushed a tree the wrong way. The tree landed on a truck and destroyed it.

Associate Director of Student Affairs Bill Kibler said the accident was the result of a combination of errors. The truck was parked in a legitimate parking area and the tree was in a legitimate cutting area, he said. But because of the top weight of the tree and the unexpected wind, it fell in the wrong direction.

The parking area in which the truck was crushed was a secondary parking area and originally was not intended to

be used, Kibler said. Redpots directed traffic to the second lot, however, because cars were getting bogged down in deep sand in the first lot, he said. One car, which was parked in tall grass, caught fire.

The crushing of the truck occurred because four students did not follow proper safety procedures, Kibler said. The procedure calls for checking the area in which trees possibly can fall. The students who cut the tree did not check the area before they began cutting, he said.

The responsibility also falls on the redpots, who are in charge of coordination of bonfire cut and construction and safety patrol, Kibler said. He said the parking lot was too close to the cutting area.

"It was really an error," he said. "They never anticipated people cutting that close to the parking lot."

Kibler said several A&M organizations are trying to raise money to pay for the truck, but would not comment on who those organizations are. The Uni-



Graphic by Kelly Morgan

versity does not have insurance to cover such accidents — the necessary general liability insurance would be too expensive, he said.

Henney said that in the best-case scenario, a redpot should have come by and checked out the tree before the cadets cut it down.

Redpot Dirk Bergoon, a senior agronomy major, said the accident happened because the cadets started cutting the tree

before any of the redpots had a chance to check it out.

Since the accident, the parking lot in which the truck was crushed has been closed, Bergoon said.

He said that the same training methods are still being used to teach people to cut the trees properly, but the redpots have shifted some of their training and safety responsibility to the Corps' commanding officers.

"I had a meeting with the commanding officers and put more of the responsibility on them," he said. "It is not just the redpots responsibility to make sure accidents don't happen, but the seniors who are commanding officers as well."

Gary Nelson, a safety consultant who has advised the bonfire committee during previous bonfire cuts, said that accidents are probable events. In one day, two to three accidents could occur, followed by a long period of time when no accidents are reported, he said.

Accidents do happen in spite of best efforts, Nelson said. And the more often something is done — such as cutting down trees — the probability of something going wrong increases, he said.

Although it is not known how many bonfire-related accidents have occurred this year, Kibler said, fewer injuries have been reported so far than during last year.

Usually, an average of 50 to 75 injuries occur each year, he said.

"The weather has a lot to do with the number of injuries," he said. "This year

has been so dry that the number of injuries is low. When the weather is wet, the number of injuries increases."

Another accident occurred when members of the Corps dropped a log they were loading onto a truck. Bergoon said the accident occurred when several of the people lifting the log panicked and did not listen to the lifting commands.

The logs are loaded by hand following a series of commands given by a redpot. Bergoon said they were lowering the log to regain control of it. However, some of the lifters did not understand the command and let the log drop to the ground.

Three injuries resulted from the misuse: a strained back, a hyperextended achilles tendon and a broken thumb.

Most recently, a student needed stitches after he cut his foot with an ax, and another student broke his thumb. Kibler said that in both cases, proper safety procedures were not being followed.

Bergoon said the redpots were pleased with the last weekend's cut.

## Lawmaker wants dismissal of insurance commissioner

AUSTIN (AP) — Under pressure from state lawmakers, the State Board of Insurance said Thursday it will place the agency's chief on leave pending an investigation into allegations of mismanagement and foot-dragging in the largest insurance company insolvency case in state history.

The three-member board also said the Travis County District Attorney's public integrity unit will review the agency's handling of the National County Mutual Fire Insurance insolvency for any possible criminal wrongdoing.

Emerging from an hour-and-15-minute closed session, the board said recent criticism prompted them to initiate the management probe and investigation into the department's delay in taking control of National County Mutual.

During this examination, Commissioner Doyce Lee will be placed on leave, although the details of this move had not been worked out, board members said.

Lee, 47, and commissioner since 1985, said he agreed with the board's decision. "I think it takes the pressure off of me and the board, and the agency can go about its business of regulating the industry. That will give time for the air to clear."

Board members praised Lee, and credited him with making the recommendations of conducting an independent audit and contacting the Travis County District Attorney's office. But they said complaints lodged by state lawmakers and consumer interest representatives about the agency forced them to make the move.

"When there's so much publicity and so much allegations, we probably do not have any alternative," said board member David Thornberry.

"For his (Lee) benefit, for ours, for the public in general we do need to get this investigation going," said board chairman Edwin J. Smith Jr.

The board's three members, and Lee,

met separately Wednesday with Travis County District Attorney Ronnie Earle. The district attorney's office said it will review the history of the National County Mutual case.

National County Mutual, a Dallas-based company with 125,000 auto insurance policyholders statewide, was declared insolvent last week and taken over by the insurance board.

The debt-riddled company was \$54 million in the red and became the largest insolvency of a property and casualty company in state history.

Several lawmakers complained the insurance board's staff had known of the company's problems since at least 1986, and should have moved earlier to protect National County Mutual's policyholders.

"The State Board of Insurance is failing in its mission to regulate the insurance industry and protect the interests of consumers and policyholders," state Sen. John Montford, D-Lubbock wrote the board in a letter Thursday.

## Jungian psychology talk explores basic elements of human psyche

By Jamie Conley  
Reporter

The ego is the center of the conscious and is the gatekeeper of the conscious mind. Jerele Neeld told members of the Brazos Valley Jungian Society last night in Rudder Tower.

The speech, "Dynamics of the Psyche," was the second part of a four-part program on the basic concepts of Jungian Psychology offered by the Jungian Society and the Texas A&M psychology department.

Neeld, an A&M graduate and the Jungian Society treasurer, said there are five parts to a human's psyche: ego, persona, shadow, anima and animus.

"The persona is the mask or faade a person presents to the public," he said. "It is necessary for survival and is needed to interact with people in all aspects of life."

Neeld said the shadow is both a positive and negative aspect of the individual.

"The shadow determines people's relationships with the same sex and contains more of an animal nature than any other part of an individual's psyche," he said.

The shadow also adds dimension to the personality and if repressed can become beastly, he said.

Anima, the masculine characteristics found in the female, and animus, the feminine side of the male, are necessary for individuals to have healthy relationships with the opposite sex, Neeld said.

Quoting psychologist Carl Jung, Neeld said, the five senses provide constant stimulation for our psyche.

"The psyche can never reach equilibrium because data is always coming in," he said. "If energy is stored in the unconscious, it can be brought

up at a later time when the psyche deems it necessary."

Neeld also discussed the autonomy of complexes, which are the emotions surrounding a subject that an individual's psyche finds sensitive.

There are four ways to control complexes, Neeld said.

"A person can remain unaware of the complex, identify the complex, project the complex or confront the complex," he said.

Neeld said, however, that confronting the complex is the only true opportunity to consciously control the psyche.

"To free oneself from the complex one must recognize how the complex has affected their behavior and change it," he said. "One must also stop projecting negatively."

Projections, as defined by Neeld, are imagined views of others or of oneself. They can be positive or negative.

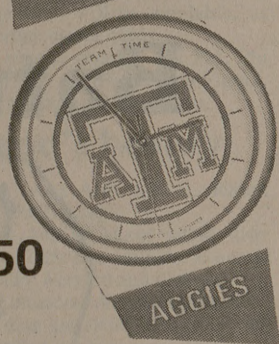
## It's Not Too Early To Shop For Christmas!!

Texas Coin Exchange has a tremendous selection of beautiful gifts for Christmas. Gold Chains, bracelets, earrings, pearls, watches, charms, colored stones, rare coins, gold coins and much much more. Shop Texas Coin Exchange for the best prices on jewelry.

### Texas Aggie Watches!

Quartz  
Swiss made  
mens or ladies

**\$32<sup>50</sup>**



### Large Stock of Rare coins

Proof sets Mountings for Gold coins, Gold & Silver Bullion items



### Texas A&M SEIKO Watches

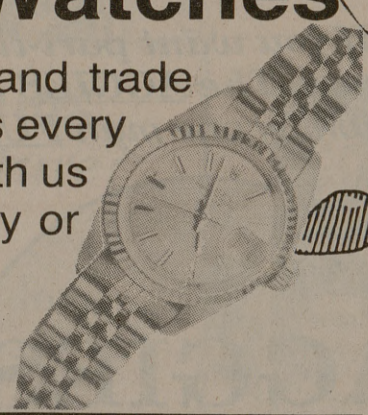
men's or ladies

**\$225<sup>00</sup>**



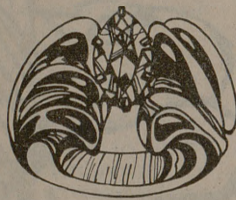
### Rolex Watches

We buy, sell and trade Rolex watches every day. Check with us before you buy or sell!



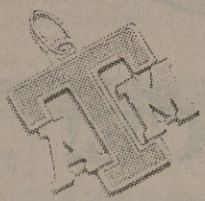
### Diamond semi-mounts

A large stock of 14k & 18k mounts For diamonds & color stones set with round Baguette and marquise cut diamonds



### Diamond Tennis Bracelets


1 ct.	\$895 <sup>00</sup>	6 ct.	\$4,960 <sup>00</sup>
2 ct.	\$1,475 <sup>00</sup>		
3.25 ct.	\$2,995 <sup>00</sup>	Bracelets with Colored Stones also available	
5 ct.	\$3,980 <sup>00</sup>		



### Texas A&M Charms

14K GOLD  
small \$12<sup>95</sup>  
large \$21<sup>95</sup>

### Diamond for Aggie Rings

.05	\$35 <sup>00</sup>	 \$15 <sup>00</sup> mounting fee if you buy your diamond from us!
.10	\$63 <sup>00</sup>	
.21	\$165 <sup>00</sup>	

Ask us about our 30-day money back guarantee on loose diamonds. We have the largest stock in the area!

## TEXAS COIN EXCHANGE

Hours  
M-F 9-5:30 Sat. 9-3:00  
Lay-Away Now for X-mas

Texas 6  
★ Texas Coin Exchange  
Texas Ave. University Texas A&M

404 University, Behind Shellenbergers 846-8905-846-8916