

Sports

Lady Aggs win 5-set home opener

By Jerry Bolz
Sports Writer

The Texas A&M volleyball team defeated the Northwestern Wildcats Wednesday night 13-15, 15-6, 11-15, 15-9, 15-13 in a match full of Lady Aggie records.

The five-game win was the first home outing for the Lady Aggies and boosted their season record to 3-1.

A&M had a school-record 94 kills, topping their mark of 92 set against Texas Tech in 1985. Senior outside attacker Vivian Viera also broke a school record with 31 kills.

"I just got pumped," she said. "I started pounding away and they weren't stopping me, so I got the idea. 'Hey, I'm unstoppable.'"

Senior attacker Cheri Steensma had 27 kills and now is in fourth place on the all-time A&M list.

Coach Al Givens was impressed with Viera and Steensma on offense as well as the defense

of Yvonne Van Brandt, who led the defense with 30 digs.

"Van Brandt was totally awesome," he said. Givens said the teams' attitude was to play to win, instead of keeping from losing. "I thought it was a great match, but I don't like them that close," he said.

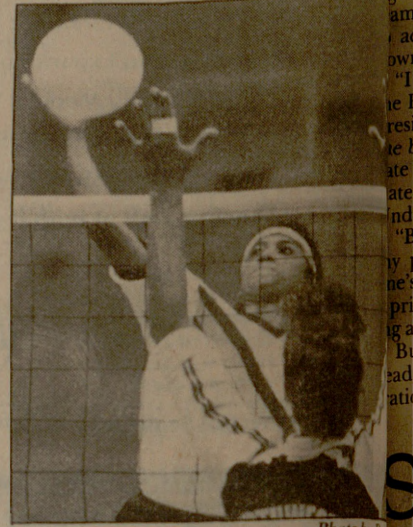
The Lady Aggies defense held Northwestern All-America-hopeful Janine Makar to 20 kills in 56 attempts.

The match was the first five-game match A&M has won since September 1986. They were 0-5 in five-game matches last season.

The match was good experience for the Lady Aggies, but they need a little work before this weekend's Texas A&M Invitational tournament, Givens said.

"We have a lot of little areas to improve on," he said. "We're not playing the defense we can."

The attendance of about 600 was less than Givens hoped for.



A&M outside attacker Vivian Viera spikes the ball past Janine Makar's block attempt.

AGGIE

FILM DEVELOPING

SPECIAL

\$1.99

GOOD ON ROLL FILM DEVELOPING WITH A SINGLE SET OF STANDARD SIZE PRINTS FROM 35MM, DISC, 110, OR 126 COLOR PRINT FILM (C-41 PROCESS ONLY)

OFFER GOOD SEPT. 5 - SEPT. 12, 1988

PHOTOGRAPHIC SERVICES

AT GOODWIN HALL

& THE TEXAS A&M BOOKSTORE IN THE MSC

Quick Cash!

- Student Loans-GSL, SLS and Plus Loans
- 7-10 day Average Turnaround
- FREE First Order of Checks With Student Loan Application and This Ad.

We Finance Futures

First Bank & Trust

268-7575

Galleria Village • 1716 Briarcrest Drive • Bryan

Member FDIC



THE PHI KAPPA SIGMA FRATERNITY

Φ **PLAYBOY** PARTY Φ

1988

Φ **K** Φ

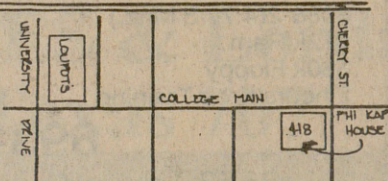
Φ **Σ** Φ

BUNNIES INCLUDED

THURSDAY SEPTEMBER 8th

8 PM

ALL PARTIES AT THE "PHI KAP" HOUSE FOR MORE INFORMATION CALL 846-1838



There is no alternative!

Henley completes British triple crown

By Cray Pixley
Assistant Sports Editor

There are three jewels in the triple crown of English social-sporting events.

No, these events are not horse races in the tradition of America's Kentucky Derby or Preakness Stakes, although one is a horse race.

All three summer events are in the triple crown genre because of their sheer importance and spectacle. They are sporting events, but as in many English sports, the socializing is of the utmost grandeur.

The first jewel is the silliest of sporting events — Royal Ascot. Remember? The fashion show with horses.

The second jewel is the more athletic, people orientated event of Wimbledon.

Wimbledon is a sporting event to respect. It has great athletes, strawberries with cream, and royalty. It is

An American sports writer in London
Fourth part of a five-part series

perhaps the most accessible to Americans of the English sports events.

The final jewel in the crown is the distinguished Henley Royal Regatta.

It is a sumptuous affair the was named a royal event back in the 19th century and has kept rolling, or should I say rowing, along ever since.

Henley is a fascinating little town situated along the Thames River — the vein of London.

Every year in early July the rich, the sports-minded and just about everyone else go to see and to be seen.

For about five days each summer, Henley hosts its rowing regatta

where both English and American boats vie for a win.

The regatta is the perfect place for a leisurely day-long picnic since the racing boats slice by at varying intervals. Unfortunately, each race takes a while to get underway.

The packing of a picnic is easy, but finding a patch of grass along the river bank is a bit of a challenge.

Those lucky enough to make it into the prestigious Steward's Enclosure don't have to worry about finding that patch of grass. They can watch the competition from the comfort of an exclusive tent along the bank.

But most would argue that the best action takes place outside the tent.

Throughout the days racing, spectators trudge up and then back down the Thames banks. Various

booths line the river selling nuts and Pimms, a very traditional English beverage. Go to Henley and the beer is flowing.

It definitely flows on the Mississippi steamboat cruisers that some river cruisers that some river

Several of these ply the one side of the wide river out the day. Those on board to the music of live bands Dixie music or wave to onlookers who are stuck on the bank.

There is a great deal of the water that has little to do with the racing.

It seems a race goes by in a while just to add to the sphere.

See Henley, page 16

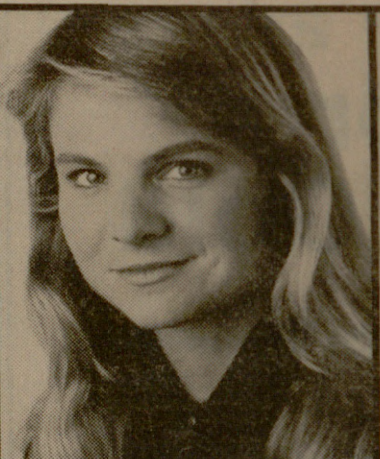
CARLOS SOSA



GRANT JONES



SUSAN KRUSE



HOLLY A. VAN DEURSE



MIT, Structural Engineering.

Analyzing and designing bridges. Developed working model of a double spandrel arch bridge. The HP-28S helps him analyze structural stress and geometry. It's the only calculator that lets him do both symbolic algebra and calculus. It features

powerful matrix math and graphics capabilities. And HP Solve lets him solve custom formulas without programming. With more than 1500 functions, 32K RAM and both RPN and algebraic entry, the HP-28S is the ultimate scientific calculator.

University of Virginia, Finance.

Studies fluctuating stock and money market trends. Assisted head trader in Yen at Chicago Mercantile Exchange. The HP-12C with RPN lets him analyze prices,

ratios, net present value and internal rate of return. He can even create his own custom programs. The HP-12C is the established standard in financial calculators.

UC Santa Cruz, Marine Biology.

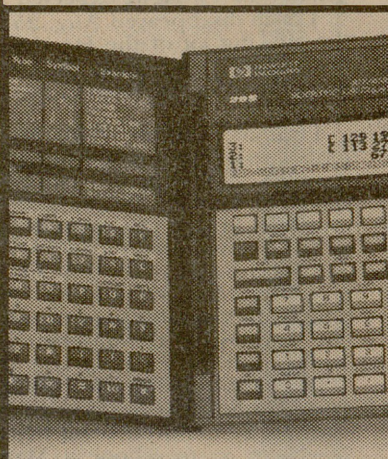
Studies behavior of blue whales and effect of environment on distribution of marine mammals. The new, easy to use HP-22S has a built-in equation library with solver,

giving her access to the most commonly used scientific equations. Statistics with linear regression. And algebraic entry. The ideal student science calculator.

University of Michigan, MBA candidate.

Assisted on pricing projects for GM. The HP-17B offers easy algebraic entry. Plus time value of money, cash flows and linear regression to analyze budgets and forecasts. HP Solve lets her enter her own formulas and solve for any variable.

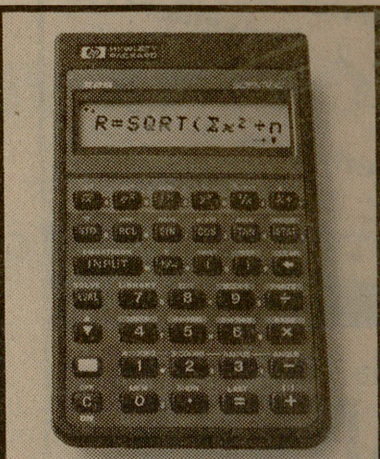
Hewlett-Packard's calculators are built for your success. Look for them at your campus bookstore. Or call 1-800-752-0900, Ext. 6553 for your nearest dealer. We never stop asking "What if..."



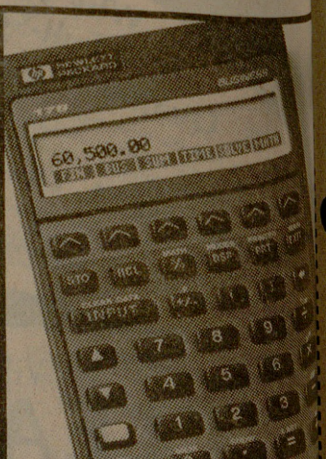
HP-28S SCIENTIFIC CALCULATOR



HP-12C FINANCIAL CALCULATOR



HP-22S SCIENTIFIC CALCULATOR



HP-17B BUSINESS CALCULATOR