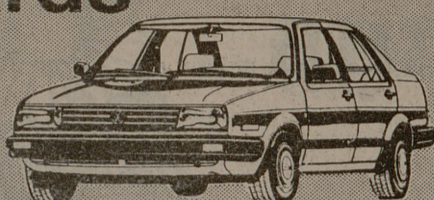


Congratulations Aggies

Hard Work Deserves The Best Rewards

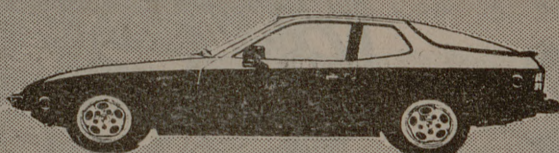
Bud Ward is your Aggie connection for fine German engineered cars.



1988 Volkswagen Jetta GL
May and December Graduate Financing Programs Now Available



1988 Audi 80
Student Financing Programs Available



1988 Porsche 924S was \$29,835
SALE \$24,990

We offer Real Deals with Real savings - "Just the way you want it."

Sale Price on All Cars in Stock
\$\$ SAVE \$\$

BUD WARD

Volkswagen-Porsche-Audie
"The Dealer With A Heart."
1912 Texas Ave. 693-3311

U.S. Air Force jet slams into warehouse in Austin

AUSTIN (AP) — A U.S. Air Force RF-4C Phantom II jet slammed into a row of mini-warehouses Monday moments after its two crew members ejected from the cockpit and parachuted to the ground, officials said.

The crash ignited a fire in the warehouses about one mile from Bergstrom Air Force Base, but there were no injuries on the ground, said Austin Fire Chief Bill Roberts.

Col. Roger Grimsley, 47, of Leesburg, Ohio, and Capt. Terence Ganiko, 30, of Honolulu, were taken to a Bergstrom hospital for treatment, said Lt. David Fruck, an Air Force public information officer.

Grimsley was pilot of the plane. Ganiko was its weapons system officer.

Air Force officials did not release any information about the crew

members' condition Monday.

The airplane, a reconnaissance version of the F-4C fighter plane, was stationed at Bergstrom and was returning from a "low-level training mission" when it crashed at 12:17 p.m., Fruck said.

Lynn McDonald, manager of the mini-warehouse complex, said her husband and another person were at the location when the plane crashed but were not hurt.

McDonald had gone to lunch and saw the crash from her car, several blocks away.

"I saw an airplane coming down, and I knew it was in this area. All I could think was, 'Thank God I'm not there,'" she said, adding, "I had an angel on my shoulder."

The mini-warehouse complex is just off Riverside Drive in Southeast Austin.

There are several residential areas nearby, including homes on the other side of Riverside Drive.

Manuel Coy, an area resident, said he saw the plane burst in flames in the air as he walked to a store.

"It kind of like turned, and the back end exploded and we saw two dudes jump out. The airplane kept on going. It kept on going lower and lower after they jumped out," he said.

Fire Department Lt. Larry Brubaker said pieces of the plane were scattered in the area.

"As far as I can see, the airplane in several small pieces, a lot of pieces," he said.

Fruck said the Air Force will convene a board of officers to investigate the crash.

MHMR will utilize funds for further asbestos removal

AUSTIN (AP) — Although they say it poses no immediate health hazard, mental health officials are recommending comprehensive asbestos surveys and removal of the substance from mental hospitals, state schools and related facilities.

The department has long been aware that its facilities for the mentally ill and mentally retarded still contain asbestos that is "nonfriable," not crumbling or releasing cancer-causing fibers into the air.

Much of it has remained, however, because the department has had to pay for asbestos clean-up with money left over from construction funds, MHMR officials say.

But voters approved in November a \$500 million bond package earmarked for institutions for the mentally disabled and criminal offenders. About \$3.4 million of that will go to asbestos clean-up in MHMR facilities, the *Austin American-Statesman* reported Monday.

MHMR officials say patients, state school residents or workers are not endangered because the asbestos is nonfriable, but it wants to remove all of the asbestos.

"We have not kept a master list of where all this asbestos is," Tom Campbell, MHMR chief of maintenance and construction, said. "We think they ought to" comply with the new federal law to protect mentally ill patients, retarded residents and state workers, Campbell said.

Asbestos that is crumbling, flaking or damaged has been removed from the institutions in various stages since the late 1970s, at a cost of about \$858,877, said Pat Terry, director of support services.

Mental health officials said the ever-escalating cost of asbestos abatement may mean the 1988-89 money earmarked for asbestos projects may not pay for all the necessary projects.

Texas voters return to polls for runoffs

AUSTIN (AP) — Texas voters head back to the polls Tuesday to finish what they started Monday — picking nominees for offices ranging from U.S. Senate to county sheriff.

Topping the list is a Republican Party runoff for the right to challenge incumbent Democrat Sen. Lloyd Bentsen, who won a nomination against token opposition in his party's primary last month.

Either Amarillo Congressman Beau Boulter or Houston businessman Wes Gilbreath will lead the GOP's nod. That race was expected to bolster turnout, party officials said.

"Our turnout in the primary (March 8) was 1 million, and we're expecting 200,000 in the runoff," Republican Party spokesman Mark Sanders said Monday.

Gilbreath could benefit from heated Republican county commissioner's runoff in the district in which Gilbreath lives.



MSC Wiley Lecture Series

Strategic Defense Initiative: Opposing Views

Wednesday, April 13, 1988
7:00 P.M. 510 Rudder

John Nutter
Department of Political Science
Richard Thomas
Center for Strategic Technology

Free!!!
Open to the Public

NOW ACCEPTING SOPHOMORES!

Juniors, Seniors & Grads...

GIVE YOURSELF SOME CREDIT!

APPLY NOW FOR YOUR VERY OWN...

- Bring a photocopy of your School I.D.
- No cosigner required

APPLY NOW ON CAMPUS!

Date: April 11-15

Time: 8:00 a.m.-4:30 p.m.

Place: Blocker

Sponsored by: Management Society

© Citicorp, 1986

CITIBANK
Citibank (South Dakota), N.A. Member FDIC

GRAND OPENING

Special

AJANTA RESTAURANT

EXOTIC FOOD FOR LESS

Welcome Aggies
For the Greatest Deal in Town!

Complete Lunch/Dinner
Each Plate Contains:
Beef or Chicken Kabob, Fried Rice or French Fries, a Salad and Soft Drink.

Burger, Fries, and a Drink for \$1⁹⁹

Please Give us a Chance to serve You.
110 College Main

for only **\$2⁵⁰**

UNIVERSITY	TAMU
*	COLLEGE MAIN
PATRICIA	

Help Wanted