

 <b>MONDAY</b> <b>\$5.25</b> Fajita Special 11 am-9 pm Margartia Happy Hour, 11 am-7 pm • Daily Lunch Specials, \$2.95 "See Thursday's Batt for our weekend specials!" 3109 Texas Ave. Bryan 823-7470	<b>TUESDAY</b> <b>\$2.59</b> LUNCH 11 am-3 pm 99¢ Margaritas	<b>WEDNESDAY</b> <b>\$5.50</b> PECHUGA MONTEREY
---	--	--

# THE EDGE

**DRINK of the MONTH**  
**\$1.25 FROZEN HURRICANES**  
 ALL NITE / ALL WEEK

**TUESDAY MENS TAN CONTEST**  
 75¢ DRINKS TIL 10 PM FOR GUYS  
 TIL 1 AM FOR LADIES  
 POOL TOURNAMENT @ 9  
 NO COVER FOR LADIES

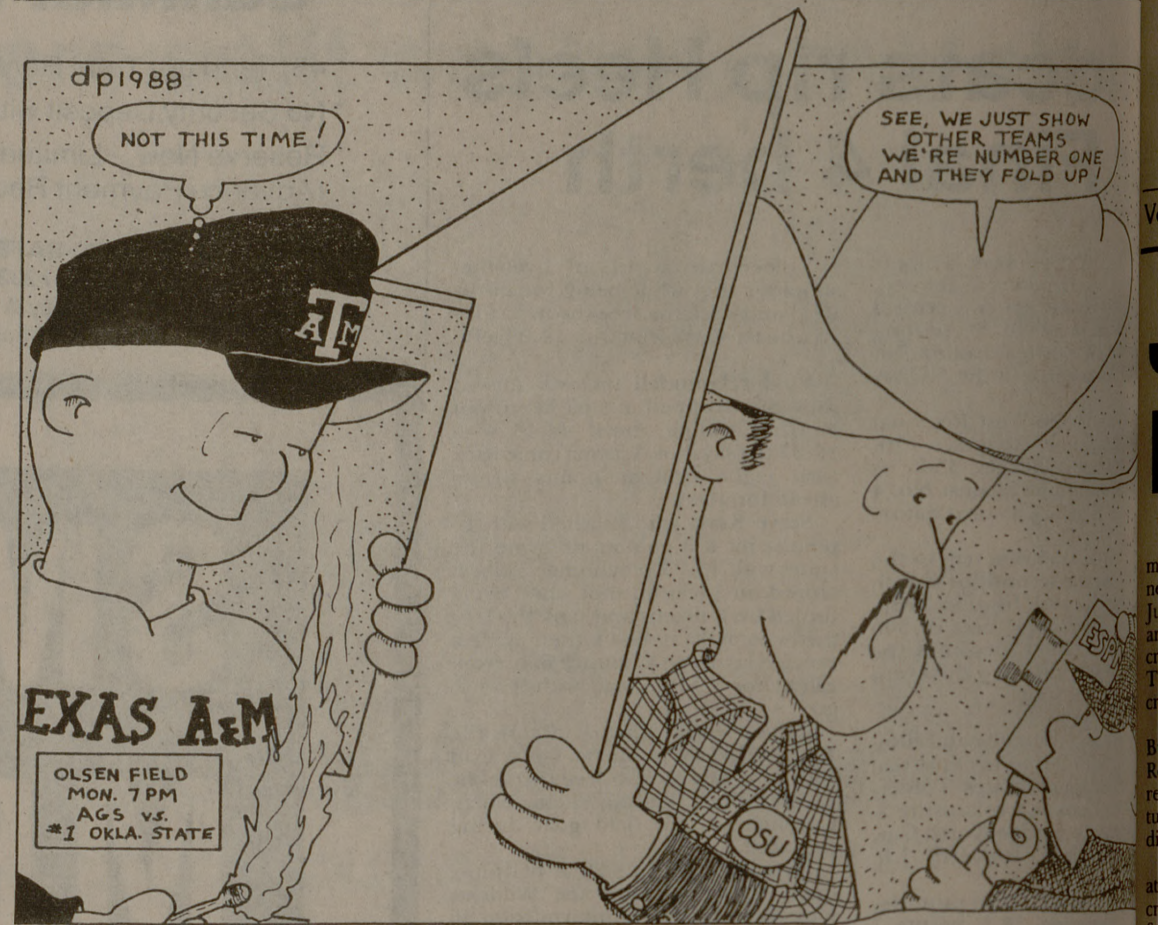
**WEDNESDAY LADIES TAN CONTEST**  
 75¢ DRINKS TIL 10 FOR GUYS, TIL 1 FOR LADIES  
 NO COVER LADIES

**THURSDAY LADIES NITE !!!**  
 OPEN BAR TIL 12 FOR LADIES  
 75¢ DRINKS FOR GUYS TIL 10 PM

**THE WEEKEND OPEN BAR 9-11 PM FOR ALL 21 & OVER**  
 FRIDAY - MISSION JEWELERS & KKYS PARTY GIVEAWAY

**OPEN 7 NIGHTS A WEEK**

**SUNDAY & MONDAY - NO COVER FOR EVERYONE. AND \$1.00 DRINKS TIL 10:00 PM.**



## Wilander holds on to nip Connors in Players Championship finals

KEY BISCAWAYNE, Fla. (AP) — Mats Wilander survived Jimmy Connors' relentless charges to the net with serves and stamina for a 6-4, 4-6, 6-4, 6-4 victory Sunday in the final of the International Players Championships.

Connors fell to 0-5 lifetime against Wilander and lost in the finals of a tournament for the 11th straight time since he last won a title in October 1984.

Connors, seeded second, won five times as many points at the net as Wilander, but the top-seeded Swede had 10 aces and 18 service winners. Wilander, 23, was moving more and Connors, 35, appeared weary in the final stages of the three-hour, 45-minute match.

"Give me a few of those years, will you?" Connors shouted at his opponent after Wilander chased down two overhead volleys in opposite corners.

Connors argued about two calls by

linesmen in the second set, but the protests were mild compared with his semifinals match Friday against Miloslav Mecir, when he threatened to quit because of the officiating.

When the chair umpire overruled a call against Wilander in the third set and ordered the point replayed, Connors didn't protest.

Connors made his strategy clear when he came to the net on four of the first eight points. But Wilander broke Connors' serve three times in the first set and served it out at love.

Wilander is 101-3 since the 1986 French Open when he wins the first set.

Connors' aggressiveness was the difference in the second set, when he rallied from a 4-3 deficit by breaking serve twice. In a four-game span, the American won 11 straight points when he reached the net.

Wilander took command in the third set, twice serving three aces in a game. The only service break came

when Connors double-faulted end the ninth game.


Wilander started going to the net in the final set. He broke in the third and fifth games for a decisive margin.

Wilander's ground strokes consistent but not flashy. He won seven straight games without a winner from the baseline in the second and third sets.

Wilander won \$112,500 of a \$2.1 million purse and moved to top-ranked Ivan Lendl on the ATP association of Tennis Professionals computer than any player since McEnroe in November 1985.

Wilander is at 138.52, Lendl has been No. 1 since Sept. 1985, is at 160.80. The Czech made the International Players Championships because of a foot injury he expected to keep him sidelined another two to four weeks.


The tournament is sponsored by Lipton.

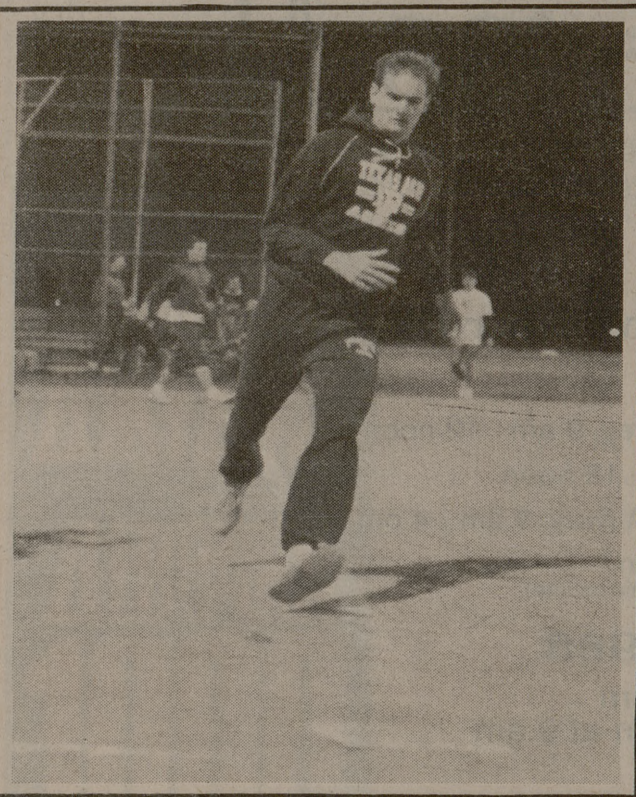


# McDONALD'S

## INTRAMURAL HIGHLIGHTS

At University Drive    Post Oak Mall    Hwy 21    Texas and S.W. Parkway    At Manor East Mall





### ALL UNIVERSITY CHAMPIONS

As the end of the semester nears, many of the sport tournaments begin to finish. So far this semester the Racquetball Singles Tournament, Horseshoe Doubles Tournament and Wallyball Tournaments have concluded. The participants in these activities all had a great time and hopefully, will continue to participate in the program. Congratulations to the All-University Champions in these activities.

<b>RACQUETBALL SINGLES</b>		<b>MEN'S C</b>	<b>FENN ARBAUGH,</b>
<b>MEN'S A</b>	DAN DUFFY		<b>JOHN HARRIS</b>
<b>WOMEN'S A</b>	FLOSSIE GIVENS	<b>WOMEN'S C</b>	<b>TARA SIMONS,</b>
<b>MEN'S B</b>	ANTHONY BARRARES		<b>ERIN O'KELLEY</b>
<b>WOMEN'S B</b>	LISA VANDYGRIFIE		
<b>MEN'S C</b>	DAVID FLORES		
<b>WOMEN'S C</b>	TAMMY REYES		
<b>HORSESHOE DOUBLES</b>		<b>WALLYBALL</b>	
<b>MEN'S A</b>	MICHAEL BACHMAYER,	<b>MEN'S A</b>	<b>THREE AMIGOS</b>
	DAVID HORTENSTINE	<b>WOMEN'S A</b>	<b>WAHOOS</b>
<b>WOMEN'S A</b>	SAMANTHA GORDON,	<b>COREC A</b>	<b>OFF THE WALL</b>
	NIESA HARMON	<b>MEN'S B</b>	<b>THE DORKS</b>
<b>WOMEN'S B</b>	LORI TRIOLA,	<b>WOMEN'S B</b>	<b>THREE AMIGAS</b>
	LISA MCLAUGHLIN	<b>COREC B</b>	<b>TRES AMIGOS</b>
		<b>MEN'S C</b>	<b>S CUBED</b>
		<b>COREC C</b>	<b>STUDMUFFINS</b>

### TAMU OUTDOORS

#### KAYAK ROLL SESSION

REGISTRATION: Mar 21-April 1. Learn how to roll the eskimo roll in a controlled environment. Experienced guides will be on hand to instruct and assist you in the Outdoor Pool. The \$8 (\$10 non A&M) fee covers instruction, kayaks and pool time. Limited to 10 participants. The roll session will be held on April 5 from 6:00-8:30 PM. For more information contact Patsy at 845-7826.

### TEXAS ASA MEN'S SLOW PITCH INTRAMURAL STATE TOURNAMENT

WHEN: April 23-24, 1988. ENTRY DEADLINE: April 18, 1988. WHERE: Central Park Athletic Complex, College Station, TX. ENTRY FEE: \$10 per team. This fee includes ASA Team Registration, team insurance with deductible, and game balls. ENTRY FORMS: Are available in the IM-Rec Sports Office. DIVISIONS: Men's Intramural (College). AWARDS: Will be given to the first, second and third place team. The first place team qualifies directly to ASA Class C National Tournament to be held in Las Vegas, NV on Sept 22-24.

**SOFTBALL PLAYOFF SCHEDULES** will be posted Mon, April 4. Playoffs will begin Wed, April 6.

**DRIVING RANGE HOURS**

MON - THU	3:00 PM - Dark
FRI	12:00 AM - 6:00 PM
SAT	10:00 AM - 6:00 PM
SUN	12:00 AM - 6:00 PM

**INTRAMURAL SPORTS CENTER DRIVING RANGE FRIDAY HAPPY HOUR**

**BUY 1 LARGE BUCKET OF BALL AND GET 1 SMALL BUCKET OF BALLS, FREE!**

GOOD ONLY ON FRI, APR 1, 12 NOON - 6 PM. MUST PRESENT COUPON.

CHECK HERE EACH WEEK FOR FRIDAY SPECIALS.

**ENTRIES OPEN: MON, MAR 21**  
**ENTRIES CLOSE: TUE, MAR 29**

**PICKLEBALL DOUBLES:** ENTRY FEE: FREE!!! PLAY BEGINS: Tues, April 7. SCHEDULES: Will be posted after 3 PM on Thurs, Mar 31 at the IM Rec Sports Office. COMPETITION: Class A - Highly Skilled; Class B - Moderately Skilled; Class C - Novice. All tournaments will be single elimination. EQUIPMENT: Will be furnished. PRACTICE TIMES: Will be available on April 5 & 6 in 351 G. Rollie White.

**HANDBALL DOUBLES:** ENTRY FEE: Free!!! PLAY BEGINS: Tues, April 5. EQUIPMENT: Each participant must supply a new can of balls. COMPETITION: Class A - Highly skilled; CLASS B - Moderately skilled; Class C - Novice. All tournaments are single elimination. SCHEDULES: Will be posted on the IM bulletin board after 3 PM on Thurs, Mar 31. RULES: USHA rules will apply. Matches consist of two games to 21 points and an 11 point tie breaker if necessary.

**PUTT-PUTT GOLF:** ENTRY FEE: A \$2.00 green fee will be collected for Men's and Women's events and an additional \$2.00 per person will be collected for CoRec competition during registration in the IM-Rec Sports Office. All equipment is available at the course. CONTEST DATE: Wed, Mar 30, 3:00 PM - 5:30 PM. LOCATION:

Putt-Putt Golf Course, Texas Ave, South, College Station, North of K-Mart. COMPETITION: One round, 18 hole contest with medalist (stroke) scoring. Ties in each division will be decided by tie breaking procedure. Local course rules will be in effect. DIVISIONS: Men's and Women's Singles competition and CoRec Doubles.

**ENTRIES OPEN: FRI, FEB 26.**  
**ENTRIES CLOSE: TUE, APR 12.**

**PENBERTHY SOFTBALL TOURNAMENT:** ENTRY FEE: \$40 Per Team (double elimination tournament). DIVISIONS: Men's A, B, & C; Corec B & C (Due to limited number of teams, no Corec A division will be offered. Corec B teams will be awarded a maximum of 2 Class A players per team. AWARDS: Penberthy T-Shirts and team trophy to champions in all classes. Men's Class A champions will receive a gift certificate to C.C. Creations good for 15 team t-shirts with a 2 color screen and 2 color 10" numbers with one hour of artwork; a \$200 value. RULES: A.S.A. rules with IM and Penberthy exceptions will apply. Divisions must have 8 teams or more in order for the division to make. T-shirt awards will be limited to 15 per team. EXTRAS: All homerun hitters will receive a free food coupon compliments of McDonald's. Most valuable player of each game receives a Penberthy player of the game koozie compliments of C.C. Creations. TOURNAMENT DATE: April 15-17.

### AGGIELAND BICYCLE CLASSIC

The Aggieldand Bicycle Classic will be held Sunday, April 10, 1988 at the Research Park. Several races will be held with various distances. Enter the race that reflects your fitness level. Entry forms will be taken at the Aggieldand and Valley Cyclery. The entry fee is \$10. All entries received before April 3, 1988 will receive a water bottle and T-shirt. Registration for each event will close 30 minutes prior to the event. For more information call Aggieldand Schwinn at 696-9490 or Valley Cyclery at 764-2000.

**ACKNOWLEDGEMENTS:** McDonald's Intramural Highlights is sponsored in the Battalion by your local McDonald's Restaurants: University Drive, Manor East Mall, Hwy 21, Texas Avenue and Post Oak Mall. Stories are written by P.J. Miller, graphics are by Paul Irwin and photos are by Mark Figart and Sarah Cowan. Intramural-Recreation Sports is a department in the Division of Student Services.