

State and Local

Eight schools participate in Corps' Military Weekend

By Holly Becka
Reporter

Texas A&M's sixth annual Military Weekend enabled a valuable exchange of ideas, Corps of Cadets public relations officer Darren Richardson said.

Seven other military institutes participated in the military review and festivities. Richardson, a senior political science major, was in charge of the weekend's events and said everything went smoothly.

The activities kicked off Friday with a roundtable discussion.

"It was fantastic," he said. "The topic was 'Adapting to Change' and we talked about women cadets, leadership changes, the disciplinary system — how it's changed since we were freshmen, and controls on hazing."

Sonja Henrikson, a sophomore biology major from Pease Air Force Base, N.H., was co-chairman of the Military Weekend public relations subcommittee. She sat in on the roundtable discussion, and said it was interesting.

"I really enjoyed the active discussions," she said. "While talking about adjusting, each delegate was asked 'Do you feel the adjustment with female cadets has been complete?'"

Two schools said yes, but A&M answered no. A&M is a very traditional school and women are not integrated into each outfit.

"We discovered we have avoided a lot of problems other schools had because of the individual outfits," she said. "The female cadets are just as well accepted here; we do not feel discriminated against. We're making steady progress. Things are always

getting better as time goes by." The activities continued Friday with a press conference, a Corps run and the Combat Bash.

The visiting delegates participated in everything and stayed with Corps members. Richardson said he felt the guests learned some things and enjoyed themselves.

A military review in honor of the guests was held Saturday afternoon on the Gen. Ormond R. Simpson Drill Field near the MSC. Reviewing officers were Maj. Gen. Thomas Darling, Col. Herbert Currie, Col. George Stokes and Col. Richard Bi-nodi.

A&M President Frank E. Vandiver, Vice President for Student Services Dr. John Koldus III, and two members of the Corps Development Council, Chairman Harold Sellers and Chairman-Elect Bill Heve attended.

Before the review, the entire Corps formed a block "T" on Kyle Field. Band members were in charge of getting the various outfits in the form of a "T" so pictures could be taken.

Will Welch, a cadet and freshman general studies major from Atlanta, said he thought the "T" was a good cause to show the spirit of the Corps. He said getting the letter formed took a long time.

"It could have been organized a little better," Welch said. "It was a big cluster out there for a while, and when it got organized, we stood in the 'T' for about 30 to 45 minutes. After a while it got boring, so the upperclassmen started doing stuff to keep our minds off standing there."

To keep themselves and the on-lookers amused, the cadets on one side of the "T" yelled "Tastes great!" and the other answered with "Less filling!"

The letter's height was the width of Kyle Field, Richardson said. "About 2,000 people formed the 'T,' which hasn't been done in five years," he said.

The weekend came to a close with the military banquet and formal ball. Richardson said a 1978 A&M graduate and former Corps Commandant Mike Gentry spoke at the banquet. Gentry said the Corps needed to adapt to change if it was going to continue successfully.

Music at the formal was provided by the Aggiedance Orchestra.

Cadet 1st Sgt. Robert Wilson, a visiting delegate from North Georgia College in Dahlonega, said he enjoyed the hospitality and friendship he found at A&M.

"Everyone I've met has been really friendly," Wilson said. "There's only one other place like this I know of — and that's home."

Wilson, a junior criminal justice major from Eton, Ga., said his first visit to A&M was this past weekend.

"This is the third year my school has sent a delegate," he said. "They've been sending juniors so if we learn some valuable information we can implement it next year." Wilson said he felt there was a good exchange of ideas between the schools.

"I got a lot of new ideas," he said. "Every institute has good and bad things about it, and we can learn from each other. We all agreed we

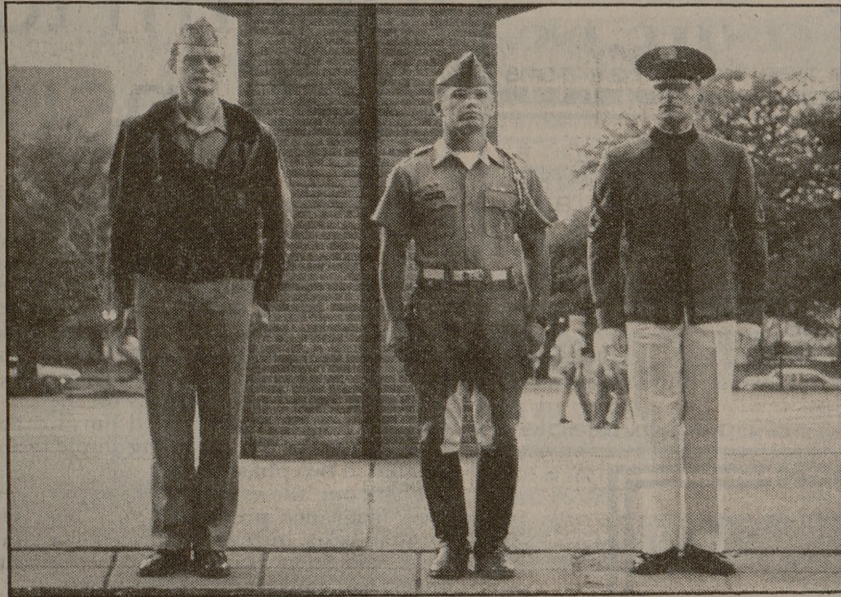


Photo by Mike Mulvey

Navy Lt. Stewart from the Trigon, Corps Commander Pat Thomason and West Point senior Lee Walters, stand at attention while members of the Corps of Cadets march to dinner during military weekend.

had an obligation to make the definition of hazing more strict."

He said North Georgia was different than A&M because all the men who live on campus are in the military, and he said he learned something from the Aggies.

"I think A&M (the Corps program) places a lot of emphasis on retention of its members," he said. "The juniors and seniors here have more privileges than we do. . . There's really no incentive to stay in the program if you don't get a commission. I'd like to see retention stressed more at North Georgia."

Cadet Regimental Commander Brad McQuarrie from New Mexico Military Institute has visited A&M several times to see friends in the Corps who he met at advanced

camp, and has been a delegate to Military Weekend the past two years.

He said NMMI is vastly different than A&M.

"We have a four year preparatory high school and a two year college combined," he said.

"It (the program) went much better than last year," McQuarrie said. "This year everyone was very willing to put out a lot of information and share well."

The following military institutes participated in weekend activities: North Georgia College; New Mexico Military Institute; the Military Academy in West Point, N.Y.; the Air Force Academy in Colorado Springs, Colo.; the Virginia Military Institute in Lexington, Va.; the Merchant Marine Academy in Kings Point, N.Y.; and Norwich University in Northfield, Vt.

Gephardt, Dukakis lead in Texas

Democratic presidential candidates Michael Dukakis and Richard Gephardt have the lead in the March 8 primary in Texas, but the race remains tight and could change, according to a poll published Sunday.

The poll, conducted for the *Houston Chronicle* and the *Dallas Morning News*, is part of continued nightly tracking of Texas voter preferences.

While the Democratic race in the state is tight, Vice President George Bush has a clear lead in the Republican primary for Texas, the state he calls home. Sen. Bob Dole is a distant second.

Among 301 likely Democratic primary voters surveyed, Massachusetts Gov. Dukakis has 22 percent of the support and Missouri Rep. Gephardt has 21 percent. Both posted increases of 4 percent and 6 percent, respectively, from the first three days of surveying, Feb. 21-23.

The poll's margin of error is plus or minus 6 percentage points. It was conducted by University of Houston political scientist Richard Murray through the university's Center for Public Policy.

Correction

In a Feb. 25 *Battalion* supplement a number given for local tax help was incorrect. Instead of calling 260-9501, telephone questions should be directed to the Internal Revenue Service's toll-free number, 1-800-424-1040.

Congratulations

Alpha Phi

New Initiates and Pledges

- | | | |
|---------------------|-------------------|----------------------|
| Tina Alsbrook | Lisa Hutchinson | Lori Pierce |
| Sherri Ansley | Chrissy Johnson | Jennifer Powell |
| Ann-Marie Atkins | Lara Joyce | Karen Quach |
| Elizabeth Aurand | Heather Katz | Shannon Ratliff |
| Laura Bean | Shawn Knight | Stacey Rhea |
| Christine Camperson | Michelle Lange | Jennifer Rice |
| Melissa Clark | Julie Lawrence | Michelle Richards |
| Melody Clark | Stacey Lee | Laura Roach |
| Shannon Daniels | Mary Lehrer | Dana Scheerer |
| Trisha Davidson | Jaqui Lester | Susan Seggerman |
| Dalen Dillieto | Gema Lopez | Lorie Scott |
| Leslie Dillon | Laura Loyd | Jenny Shadix |
| Rozzie Donati | Jennifer Lusk | Patricia Shaffner |
| Kellie Dorman | Kathleen Lutz | Laura Silva |
| Karen Durda | Tracy Lyles | Whitney Simmons |
| Denise Durr | Kendell McCarley | Lisa Smith |
| Sue Ellen Faver | Cheryl McCord | Kelley Spraberry |
| Laura Garlow | Marla McCulley | Kristin Stepp |
| Susie Gedeon | Kim McDonald | Ann Stooksberry |
| Heather Gitzenauer | Missy McDonald | Susanna Stringfellow |
| Melissa Giles | Christine McNeel | Julie Teague |
| Lisa Gill | Melanie Melton | Kelly Teichman |
| Jenny Grotto | Kara Metz | Debbie Travis |
| Susan Green | Amy Moore | Mandy Vickers |
| Haika Gross | Kathleen Morrone | Kelly Walker |
| Kelly Guertel | Lara Ogrizovich | Tamara Webb |
| Patricia Hammond | Kristi Outler | Leah Williams |
| Angie Hayes | Regina Outterside | Teresa Wilson |
| Jean Hayes | Kimberly Page | Stephanie Winkler |
| Adrienne Heinsohn | Kelly Parker | Jackie Wotipka |
| Leslie Herman | Diana Parsons | Janice Young |
| Kristi Hoestenbach | Kelly Parsons | Kelly Young |
| | | Kim Young |

Congratulations and Good Luck!

FREE

SHORT STOP

Redmond Terrace
1426 Texas

Hamburger Coke & Fries

10 a.m.-11 p.m.
Wed., March 2 Thurs., March 3

one order per customer
No purchase or coupon necessary

Tell Them You Saw The Ad in The Battalion

You can't beat these prices on loose diamonds! This is a new list of Diamonds bought Feb. 18. Shop today for the best selection

| ROUND DIAMONDS | | | ROUND DIAMONDS | | | MARQUISE | | |
|----------------|---------------------|----------------------|----------------|----------------------|----------------------|----------|---------------------|----------------------|
| | Our Price | Compare | | Our Price | Compare | | Our Price | Compare |
| 2.04 cts. | 6,575 ⁰⁰ | 13,500 ⁰⁰ | .34 pts. | 165 ⁰⁰ | 300 ⁰⁰ | 1.02 cts | 2,075 ⁰⁰ | 4,000 ⁰⁰ |
| 2.02 cts. | 7,750 ⁰⁰ | 15,000 ⁰⁰ | .30 pts. | 325 ⁰⁰ | 600 ⁰⁰ | 1.02 cts | 2,850 ⁰⁰ | 4,650 ⁰⁰ |
| 1.65 cts. | 1,950 ⁰⁰ | 4,000 ⁰⁰ | .25 pts. | 225 ⁰⁰ | 400 ⁰⁰ | 1.01 cts | 1,275 ⁰⁰ | 2,400 ⁰⁰ |
| 1.51 cts. | 2,975 ⁰⁰ | 6,000 ⁰⁰ | .24 pts. | 225 ⁰⁰ | 400 ⁰⁰ | 1.00 pts | 2,950 ⁰⁰ | 8,800 ⁰⁰ |
| 1.18 cts. | 2,325 ⁰⁰ | 4,500 ⁰⁰ | .22 pts. | 165 ⁰⁰ | 300 ⁰⁰ | .89 pts | 1,750 ⁰⁰ | 3,400 ⁰⁰ |
| 1.17 cts. | 2,395 ⁰⁰ | 2,600 ⁰⁰ | .21 pts. | 165 ⁰⁰ | 300 ⁰⁰ | .82 pts | 1,575 ⁰⁰ | 3,000 ⁰⁰ |
| 1.15 cts. | 2,985 ⁰⁰ | 5,600 ⁰⁰ | .20 pts. | 165 ⁰⁰ | 300 ⁰⁰ | .75 pts | 1,485 ⁰⁰ | 2,800 ⁰⁰ |
| 1.12 cts. | 1,350 ⁰⁰ | 2,600 ⁰⁰ | .19 pts. | 165 ⁰⁰ | 300 ⁰⁰ | .74 pts | 1,095 ⁰⁰ | 2,000 ⁰⁰ |
| 1.15 cts. | 1,395 ⁰⁰ | 2,600 ⁰⁰ | .18 pts. | 185 ⁰⁰ | 310 ⁰⁰ | .68 pts | 1,195 ⁰⁰ | 2,200 ⁰⁰ |
| 1.09 cts. | 2,750 ⁰⁰ | 5,500 ⁰⁰ | .16 pts. | 115 ⁰⁰ | 200 ⁰⁰ | .55 pts | 995 ⁰⁰ | 1,900 ⁰⁰ |
| 1.09 cts. | 2,375 ⁰⁰ | 4,600 ⁰⁰ | .14 pts. | 115 ⁰⁰ | 200 ⁰⁰ | .51 pts | 985 ⁰⁰ | 1,800 ⁰⁰ |
| 1.09 cts. | 1,875 ⁰⁰ | 4,200 ⁰⁰ | .12 pts. | 110 ⁰⁰ | 200 ⁰⁰ | .47 pts | 625 ⁰⁰ | 1,500 ⁰⁰ |
| 1.08 cts. | 2,195 ⁰⁰ | 4,500 ⁰⁰ | .10 pts. | 63 ⁰⁰ | 120 ⁰⁰ | .35 pts | 425 ⁰⁰ | 800 ⁰⁰ |
| 1.04 cts. | 2,650 ⁰⁰ | 5,200 ⁰⁰ | .09 pts. | 48 ⁰⁰ | 70 ⁰⁰ | .30 pts | 475 ⁰⁰ | 850 ⁰⁰ |
| 1.01 cts. | 2,375 ⁰⁰ | 4,500 ⁰⁰ | .08 pts. | 48 ⁰⁰ | 70 ⁰⁰ | .25 pts | 250 ⁰⁰ | 500 ⁰⁰ |
| 1.01 cts. | 2,195 ⁰⁰ | 4,000 ⁰⁰ | .07 pts. | 37 ⁰⁰ | 80 ⁰⁰ | .23 pts | 275 ⁰⁰ | 500 ⁰⁰ |
| 1.01 cts. | 1,875 ⁰⁰ | 3,800 ⁰⁰ | .06 pts. | 35 ⁰⁰ | 70 ⁰⁰ | .18 pts | 195 ⁰⁰ | 400 ⁰⁰ |
| .95 pts. | 2,385 ⁰⁰ | 4,600 ⁰⁰ | .05 pts | 30 ⁰⁰ | 60 ⁰⁰ | .11 pts | 110 ⁰⁰ | 200 ⁰⁰ |
| .89 pts. | 895 ⁰⁰ | 2,000 ⁰⁰ | | | | | | |
| .89 pts. | 1,795 ⁰⁰ | 3,300 ⁰⁰ | | | | | | |
| .83 pts. | 1,595 ⁰⁰ | 2,900 ⁰⁰ | | | | | | |
| .80 pts. | 1,023 ⁰⁰ | 2,100 ⁰⁰ | | | | | | |
| .78 pts. | 995 ⁰⁰ | 1,800 ⁰⁰ | 1.51 cts | 2,900 ⁰⁰ | 6,000 ⁰⁰ | 2.16 cts | 6,295 ⁰⁰ | 12,000 ⁰⁰ |
| .77 pts. | 985 ⁰⁰ | 1,800 ⁰⁰ | 1.11 cts | 2,095 ⁰⁰ | 4,000 ⁰⁰ | 1.37 cts | 4,475 ⁰⁰ | 9,000 ⁰⁰ |
| .75 pts. | 1,395 ⁰⁰ | 2,200 ⁰⁰ | .88 pts | 1,475 ⁰⁰ | 3,000 ⁰⁰ | .75 pts | 1,395 ⁰⁰ | 2,700 ⁰⁰ |
| .75 pts. | 1,135 ⁰⁰ | 2,100 ⁰⁰ | .79 pts | 985 ⁰⁰ | 2,000 ⁰⁰ | .66 pts | 1,250 ⁰⁰ | 2,500 ⁰⁰ |
| .74 pts. | 975 ⁰⁰ | 1,900 ⁰⁰ | .71 pts | 1,350 ⁰⁰ | 2,600 ⁰⁰ | .47 pts. | 795 ⁰⁰ | 1,600 ⁰⁰ |
| .74 pts. | 1,250 ⁰⁰ | 2,300 ⁰⁰ | .57 pts | 1,185 ⁰⁰ | 2,400 ⁰⁰ | .41 pts. | 595 ⁰⁰ | 1,000 ⁰⁰ |
| .72 pts. | 1,395 ⁰⁰ | 2,700 ⁰⁰ | .54 pts | 1,225 ⁰⁰ | 2,300 ⁰⁰ | .38 pts. | 495 ⁰⁰ | 900 ⁰⁰ |
| .71 pts. | 1,395 ⁰⁰ | 2,700 ⁰⁰ | .53 pts | 1,095 ⁰⁰ | 2,400 ⁰⁰ | .33 pts | 395 ⁰⁰ | 800 ⁰⁰ |
| .71 pts. | 1,050 ⁰⁰ | 2,500 ⁰⁰ | .51 pts | 1,225 ⁰⁰ | 2,100 ⁰⁰ | .28 pts | 385 ⁰⁰ | 750 ⁰⁰ |
| .70 pts. | 795 ⁰⁰ | 1,400 ⁰⁰ | .46 pts | 375 ⁰⁰ | 700 ⁰⁰ | .25 pts | 325 ⁰⁰ | 650 ⁰⁰ |
| .68 pts. | 895 ⁰⁰ | 1,600 ⁰⁰ | .48 pts | 315 ⁰⁰ | 650 ⁰⁰ | | | |
| .67 pts. | 760 ⁰⁰ | 1,350 ⁰⁰ | .28 pts | 285 ⁰⁰ | 500 ⁰⁰ | | | |
| .65 pts. | 785 ⁰⁰ | 1,450 ⁰⁰ | .27 pts | 105 ⁰⁰ | 210 ⁰⁰ | | | |
| .61 pts | 750 ⁰⁰ | 1,400 ⁰⁰ | .10 pts | | | | | |
| .60 pts | 795 ⁰⁰ | 1,400 ⁰⁰ | | | | | | |
| .58 pts | 850 ⁰⁰ | 1,700 ⁰⁰ | | | | | | |
| .57 pts | 695 ⁰⁰ | 1,275 ⁰⁰ | | | | | | |
| .57 pts | 795 ⁰⁰ | 1,500 ⁰⁰ | 2.30 cts | 4,900 ⁰⁰ | 10,000 ⁰⁰ | 1.67 cts | 4,525 ⁰⁰ | 6,950 ⁰⁰ |
| .56 pts | 695 ⁰⁰ | 1,275 ⁰⁰ | .90 pts | 1,890 ⁰⁰ | 4,000 ⁰⁰ | 1.21 cts | 2,275 ⁰⁰ | 4,500 ⁰⁰ |
| .54 pts. | 750 ⁰⁰ | 1,400 ⁰⁰ | .75 pts | 1,590 ⁰⁰ | 3,250 ⁰⁰ | 1.13 cts | 2,295 ⁰⁰ | 4,300 ⁰⁰ |
| .54 pts. | 795 ⁰⁰ | 1,600 ⁰⁰ | .58 pts | 1,75 ⁰⁰ | 2,600 ⁰⁰ | 1.10 cts | 2,435 ⁰⁰ | 4,800 ⁰⁰ |
| .54 pts. | 695 ⁰⁰ | 1,300 ⁰⁰ | .51 pts | 1,395 ⁰⁰ | 2,600 ⁰⁰ | 1.01 cts | 2,675 ⁰⁰ | 5,200 ⁰⁰ |
| .53 pts. | 795 ⁰⁰ | 1,400 ⁰⁰ | | | | .95 pts | 2,250 ⁰⁰ | 3,900 ⁰⁰ |
| .53 pts. | 695 ⁰⁰ | 1,250 ⁰⁰ | | | | .93 pts | 2,095 ⁰⁰ | 3,700 ⁰⁰ |
| .53 pts | 795 ⁰⁰ | 2,000 ⁰⁰ | | | | .68 pts | 1,095 ⁰⁰ | 1,750 ⁰⁰ |
| .52 pts | 695 ⁰⁰ | 1,250 ⁰⁰ | | | | .62 pts | 1,495 ⁰⁰ | 2,800 ⁰⁰ |
| .51 pts. | 695 ⁰⁰ | 1,400 ⁰⁰ | 2.78 cts | 13,200 ⁰⁰ | 26,000 ⁰⁰ | .60 pts | 1,150 ⁰⁰ | 2,200 ⁰⁰ |
| .51 pts. | 795 ⁰⁰ | 1,600 ⁰⁰ | 2.14 cts | 4,980 ⁰⁰ | 9,000 ⁰⁰ | .58 pts | 995 ⁰⁰ | 1,525 ⁰⁰ |
| .51 pts. | 795 ⁰⁰ | 1,400 ⁰⁰ | 1.44 cts | 2,995 ⁰⁰ | 6,000 ⁰⁰ | .52 pts | 665 ⁰⁰ | 1,200 ⁰⁰ |
| .50 pts. | 650 ⁰⁰ | 1,600 ⁰⁰ | 1.23 cts | 2,850 ⁰⁰ | 5,000 ⁰⁰ | .45 pts | 325 ⁰⁰ | 600 ⁰⁰ |
| .50 pts. | 795 ⁰⁰ | 1,600 ⁰⁰ | 1.22 cts | 3,175 ⁰⁰ | 5,800 ⁰⁰ | .10 pts | 95 ⁰⁰ | 200 ⁰⁰ |
| .49 pts. | 595 ⁰⁰ | 1,150 ⁰⁰ | 1.10 cts | 3,250 ⁰⁰ | 6,500 ⁰⁰ | | | |
| .42 pts. | 695 ⁰⁰ | 1,300 ⁰⁰ | 1.05 cts | 2,675 ⁰⁰ | 4,600 ⁰⁰ | | | |

TEXAS COIN EXCHANGE
Behind Shellenberger's 30-day money back guarantee
404 University Dr. East 846-8905