

State and Local

A&M graduate seeks railroad panel seat

By Drew Leder
Staff Writer

Texas must expedite oil and gas drilling to create more jobs for Texans, a candidate for the Texas Railroad Commission said at a press conference Friday.

State Rep. Clint Hackney, a 1974 Texas A&M graduate seeking election to the commission in 1988, stopped at the College Station Ramada Inn during a 28-city campaign trip.

"The more people we have drilling, the more Texans have jobs," Hackney, D-Houston, said. "Drilling equals jobs."

The 35-year-old senator announced Aug. 17 that he would run for the commission seat vacated when Chairman Mack Wallace resigned recently. Wallace's seat, which would have expired in 1990, currently is held by former U.S. Rep. Kent Hance, who was appointed by Gov. Bill Clements after Wallace resigned.

Hackney said he had planned to run against Democrat Jim Nugent, whose term expires in 1988, but Wallace's resignation gave him the opportunity to seek election without competing against another Democrat.

"I would much rather spend my time and my efforts campaigning against and unseating a Bill Clements appointee than I would running against a fellow Democrat," he said.

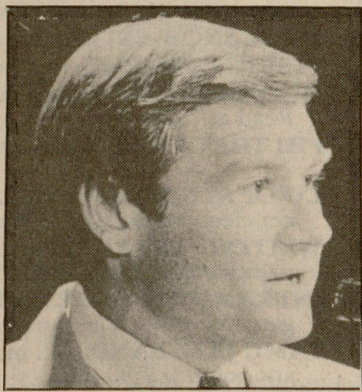
Hackney has served on the House Transportation Committee and is chairman of the Energy Committee, which passes legislation affecting the Railroad Commission.

Hackney said the state could increase oil and gas production by simplifying and quickening the drilling application process.

"One way to expedite drilling and producing in Texas is to cut red tape," he said.

The Railroad Commission is the state agency that regulates oil and gas production and transportation. It considers applications for any oil and gas drilling that is done in the state.

Hackney said the amount of time the commission takes to approve permit applications is hurting the industry.



State Rep. Clink Hackney

Hackney, citing low oil prices and the financial risks involved with drilling as reasons for decreasing oil production in Texas, said the situation called for increased tax incentives for drillers.

"With proper incentives from the Railroad Commission and the tax structure, you don't have to have the price of oil at \$30 a barrel (to increase drilling)," he said.

Hackney used model trains, comparing a steam engine to a high-technology model, to demonstrate where he would like to see the Railroad Commission go, with him aboard, in the future. He proposed that intensive research be done in the field of superconductivity in order to develop a safe and efficient high-speed railway system.

"I pledge to bring private industry into a partnership with university researchers to see if we can use the latest technology (superconductors) in practical ways," he said.

According to a press release, Hackney expects to have a superconductive train system in Texas by the year 2000.

Hackney also said he would work to control environmental pollution resulting from oil and gas drilling. There now is a dangerous problem with toxic chemicals being left behind at drilling sites at well stops, he said.

Housing Center starts program

SHARE provides assistance to students living off campus

By Jill Radenbaugh
Reporter

Help for students living off campus will be just a few doors down, thanks to a new program being introduced by the Off-Campus Housing Center.

Students Helping Aggies Everywhere, or SHARE, will provide assistance for off-campus Aggies that is close to home and available when the Off-Campus Center is closed.

"The program is a major outreach effort on the part of the Off-Campus Housing Center," said Nancy Thompson, off-campus adviser. "The goal of the program is simply to make life off

campus better for Texas A&M University students."

The program's success is achieved by having trained volunteers available to answer questions, provide information or refer students to on-campus offices, Thompson said.

The volunteers can refer these students directly from the apartment complexes where the students are living, she said.

The SHARE staff will be available to students 24 hours a day, she said. Each of their phone numbers will be posted at the off-campus center and at various places around campus.

SHARE started this fall with

seven members and is expected to grow in the future, she said.

The group started with charter members Don Harvey, John Burnett, Pam Polk, Carolyn Whitten, Chris Masi, Rob Liles and Eddie Saucedo, who are all campus leaders.

Campus leaders were chosen as staff members to ensure that the program would start out in the right direction, Thompson said.

Members started their training in August and will continue their training throughout the semester, she said.

Training consists of several workshops, meetings and volunteer time each week in the off-campus center, she said.

Each member is required to work in the off-campus center one hour a week to give them experience dealing with the students on a face-to-face basis, she said.

The purpose of SHARE is to become a resource for the students living off campus, she said. However, their primary concern this semester is to get the word out that the program exists.

"We're the arms and legs of the Off-Campus Housing Center," said John Burnett, a SHARE staff member.

SHARE was founded by Kristin Sayre, Off-Campus Housing Center coordinator, and Jay Lemons, north area coordinator.

Challenge between A&M and Baylor to help boost Red Cross blood drive

By Kimberly House
Reporter

The American Red Cross blood drive at Texas A&M has a new twist this year.

A challenge between Texas A&M and Baylor University to get 4.5 percent of each school's students to donate blood will help supply 36 hospitals in Texas with blood products. Alpha Phi Omega is sponsoring the blood drive Sept. 15, 16 and 17.

The APO chapter of each school reaching this goal will receive a "challenge trophy" during halftime of the Oct. 17 A&M-Baylor football game in Waco, said APO Drive Chairman Susanne Thaler.

"We're challenging students to give blood," Thaler said. "The reason we're doing this is to help save lives."

Students may donate blood from 9 a.m. to 4 p.m. in the second floor lobby of the Blocker Building and in a mobile unit near Rudder Fountain. Lynda Faulkenberry of the Central

Waco said about 4.5 percent of the population donates blood for the whole nation, so this should be a good goal for the campuses. About 1,755 students would need to donate blood for A&M to reach Faulkenberry's goal. The drive is open to the public.

The Waco center serves Brazos County and 27 others. All donations are tested at the blood center for AIDS, hepatitis, syphilis and other diseases.

"Brazos County hospitals use 4,000 units of blood or more in a year," Faulkenberry said. She said a community should put back into the system what it uses. There are no losers, only winners in giving someone another chance to live, she said.

A&M organizations including Aggie Alliance, FCA, Aggie Red Cross and Saddle & Siroin are volunteering to help with publicity, recruitment and refreshments. Domino's Pizza and McDonald's on University

Drive will give away food coupons to donors.

The Central Red Cross Blood Program covers all A&M students and faculty and their immediate families because they live in Brazos County, Faulkenberry said.

Every blood service has a processing fee for each unit used by a patient, Faulkenberry said. The center's fee covers staff salaries, travel ex-

penses, vehicle maintenance, testing, laboratory equipment, nursing supplies, shipping and other costs.

The center's \$33 fee is the lowest in the state, she said, and usually is covered by insurance. No recruitment or replacement fees are required, and the center receives no funding from any agency. It is operated on the processing fee only.

The Battalion to offer daily weather forecast

Starting tomorrow, *The Battalion* will present daily weather forecasts Tuesday through Friday with a forecast map valid at noon on the day of publication, a brief map discussion and the forecasts for that day and night, as well as the next day. The forecasts will be prepared by Charlie

Brenton, staff meteorologist for the Texas A&M Department of Meteorology. The map and forecasts will be accompanied by a brief weather fact.

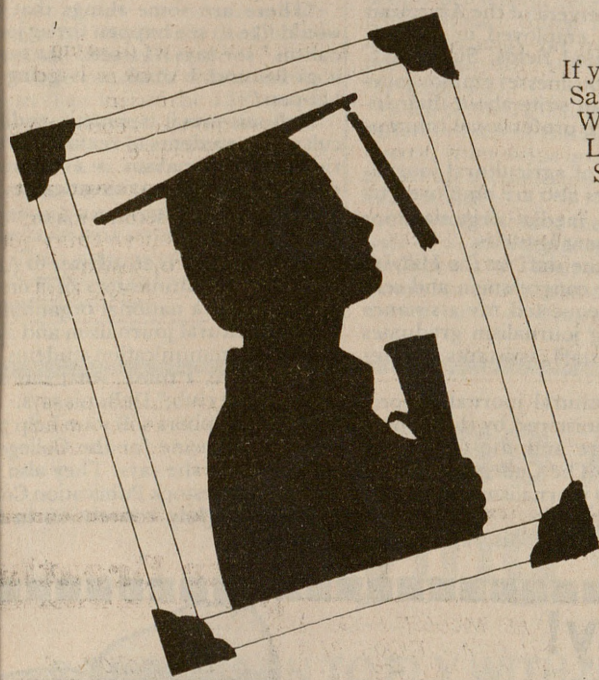
Because the meteorology department operates Monday through Friday, data will not be available on Sunday nights.

Ask About Our New 3-Day Loan Approval

FIRST FEDERAL STUDENT LOANS

Help for the high cost of higher education.

If you want to go to college, First Federal Savings & Loan Association wants to help. We offer Federally Guaranteed Student Loans administered by the Texas Guaranteed Student Loan Corp. to qualified students. The interest rate is currently 8%, far below current market loan rates, and you have up to 10 years to repay your loan. Plus, with our new application and processing procedures, we can now provide three day approval on your loan. Learn more about our guaranteed student loans. Information and loan applications are available now at First Federal.



First Federal

Savings & Loan Association of Beaumont
409/268-8675
3608 East 29th St.
Bryan, TX 77805

An equal opportunity lender.

GTE General Telephone

Convenience

Sign up now ... and save on GTE Custom Calling

You're in the right place...
Bryan/College Station

at the right time...
From now through
October 15

to get the best bargain around...
Free installation

on Custom Calling features that can save you time and money — every time you use your phone.

No more busy signals with Call Waiting. Have your telephone calls follow you wherever you go with Call Forwarding. With 3-Way Calling, you can have conference calls just like many big businesses enjoy. And Speed Calling allows you to reach frequently called telephone numbers by dialing just one or two digits. You can get any — or all — of these features for a small monthly charge on your bill.

But, from now until October 15, the installation is free. There'll never be a better time.

So call now, and put General Telephone's time-saving Custom Calling features to work ... for you.

CALL WAITING. If you have Call Waiting, a tone will tell you that another call has come for you when you are on the line.

CALL FORWARDING. This feature lets you automatically transfer incoming calls to your number.

3 THREE-WAY CALLING. This feature lets you set up a three-way local or long distance conference call, without help from the operator.

SPEED CALLING. Speed Calling lets you store your most frequently called or emergency phone numbers by dialing only a one- or two-digit code.

GTE Customer Service Center
700 E. University Dr.
College Station, Texas