

**SHORT ON CASH???**  
Sell your books at University Book Stores  
Northgate & Culpepper Plaza

**Speed Reading**  
Free one hour lesson!  
We will double your speed. Money back guarantee course will:

- increase comprehension
- improve retention
- teach study skills

Get assigned reading done in less than half the time.

**Ramada Inn**  
College Station  
Mon. March 23 or Tues March 24  
4, 6, and 8 p.m.  
Power Reading  
713-320-9671

Call Battalion Classified 845-2611

**EXPLORE LONDON FOR 7 DAYS ON US!**  
Purchase your roundtrip summer London fare by May 30 from STN and we will give you a free 7 day London Explorer Pass—unlimited travel on London buses and "The Underground."  
**STUDENT TRAVEL NETWORK**  
Call us at (214) 360-0097  
6609 Hillcrest Ave., Dallas

SCHULMAN THEATRES	
<b>2.50 ADMISSION</b>	
1. Any Show Before 3 PM 2. Tuesday - All Seats 3. Mon-Wed - Local Students With Current ID's 4. Thur - KORA "Over 30 Nite"	
*DENOTES DOLBY STEREO	
<b>PLAZA 3</b>	
226 Southwest Pkwy	693-2457
*TIN MEN R	7:15 9:35
*MANNEQUIN PG	7:35 9:55
*LETHAL WEAPON R	7:25 9:45
<b>MANOR EAST 3</b>	
Manor East Mall	823-8300
*PLATOON R	7:10 9:40
*SOME KIND OF WONDERFUL PG-13	7:25 9:55
OUTRAGEOUS FORTUNE R	7:20 9:50
<b>SCHULMAN 6</b>	
2002 E. 29th	775-2463
ANGEL HEART R	7:20 9:50
RETURN TO HORROR HIGH R	7:10 9:55
<b>\$ DOLLAR DAYS \$</b> This Week's Features Are:	
THE GOLDEN CHILD PG	7:20 9:45
CROCODILE DUNDEE PG-13	7:25 9:55
THREE AMIGOS R	7:30 9:40
STAR TREK IV R	7:15 9:45

**The Battalion**  
845-2611

# World and Nation

## Greeks show support for government over Aegean Sea oil confrontation

ATHENS, Greece (AP) — Greeks rallied around the government Sunday and labor unions canceled strikes as a standoff with Turkey over Aegean Sea oil rights ended in what Greece saw as a victory for Prime Minister Andreas Papandreu.

A 48-hour military alert was wound down Sunday, but officers could not leave their units, said military sources, speaking on condition of anonymity.

Greece planned a show of military strength with a five-day, air-sea exercise starting Monday in the northeastern Aegean, where a Turkish research ship had planned oil exploration in a continental shelf area claimed by Greece.

Turkey stepped back from a military confrontation with fellow NATO member Greece over mineral rights in the Aegean when it

changed the ship's course at the last minute Friday.

Turkish Premier Turgut Ozal said the ship, Sismik-1, would confine its tests for oil to Turkish territorial waters, provided Greece did the same.

Ozal said in Ankara on Sunday his handling of the dispute turned "the crisis to our advantage," but did not elaborate.

He spoke after returning from a two-month stay in the United States, where he underwent a coronary bypass operation. He received a traditional Moslem welcome, with Turks slaughtering hundreds of sheep in the streets of Ankara.

In Greece, strikes by civil servants and bakery workers set for Monday were canceled in a show of support for the government. Even the Greek Orthodox Church, battling the governing socialists for control of

church-owned land, said it would stop holding public protests.

Analysts said Papandreu's handling of the crisis also would boost his popularity among Greek left-wingers, who have accused the government of abandoning its radical anti-Western platform and moving to the right.

At one point during the confrontation with Turkey, Papandreu demanded the temporary shutdown of operations at a U.S. military base near Athens, citing a clause in the 1983 Greek-U.S. defense accord that permits such action during a national emergency.

The continental shelf dispute last brought Greece and Turkey to the brink of war in August 1976, when Sismik-1 carried out oil testing in international waters. As a radical op-

position politician then, Papandreu urged the conservative government to "sink the Sismik."

This time, Papandreu said the United States and the Atlantic Treaty Organization are encouraging Turkey to go to Greece. He has urged the government to agree that the national Court of Justice at The Hague, Netherlands, be asked to settle the dispute.

Greece claims that 2,000-odd Aegean islands belong to its own continental shelf. The position is supported by the international Law of the Sea which Turkey hasn't signed.

Turkey says the eastern Aegean lands belong to the Anatolian continental shelf extending beyond Turkish Aegean coastline.

## Aquino praises citizens groups, blames extremists for instability

DAVAO CITY, Philippines (AP) — President Corazon Aquino endorsed unarmed anti-communist citizens groups Sunday as a legitimate example of "people power" and blamed leftist and rightist extremists for national instability.

The role of such groups has stirred national debate. Supporters believe the groups can contribute to combating communism. Critics fear they will become a threat to law and order.

The military meanwhile remained on full alert against rebel attacks as the Communist New People's Army commemorated the 18th anniversary of its founding. The military said the rebels threatened to kill a general to mark the date, but there were no reports of attacks.

Aquino on Sunday flew to Davao and Zamboanga on southern Mindanao Island to support 24 Senate can-

didates in the May 11 congressional elections.

She drew only modest crowds, far smaller than those which turned out during rallies in support of the constitution, which was ratified Feb. 2.

Aquino told about 30,000 people in Zamboanga City that "I blame the leftists and the rightists for the present problems in the country."

In Davao City, she told about 5,000 people she was pleased that local officials "saw 'people power' to take care of the citizens without the use of arms."

She apparently was referring to a group called United Association for Peace, or NAKASAKA, organized this month in southeastern Mindanao as an anti-communist organization.

Local Governments Secretary Jaime Ferrer has urged formation of other groups along similar lines to encourage citizens' cooperation with

the military in combating the communist rebels.

The military claims NAKASAKA is unarmed. Another vigilante group, Alsa Masa (Masses Arise), has received weapons from authorities in Davao City, where it was formed last year.

NAKASAKA, however, has formed an alliance with a militantly anti-communist religious cult, Tadtad, whose members carry machetes and other weapons.

Some Philippine columnists and human rights groups deplored the rise of citizens' groups as a threat to civil liberties and said they could turn into lawless militias.

In Zamboanga City, Aquino acknowledged that her government has not solved the 15-year-old Moslem insurgency in Mindanao and other southern islands, but said progress had been made.

**Labor Party Talks with US were distorted**

LONDON (AP) — The British Labor Party on Sunday accused the White House of distorting its talks with President Reagan to help Prime Minister Margaret Thatcher's re-election chances.

Labor deputy leader Neil Kinnock said the party's position was steadily being eroded by the White House's "distorted" version of the party's stance on the Falkland Islands.

He said the party's position was being distorted to help Thatcher's re-election chances.

What does seem to be the case is that some of President Reagan's advisers thought it would be a good idea to try and help Thatcher in her election bid, he said.



**McDonald's**  
DRIVE-THRU SERVICE

# McDONALD'S

## INTRAMURAL HIGHLIGHTS



**McDonald's**  
BREAKFAST EVERY MORNING

University Drive
Hwy 21
Texas and S.W. Parkway
Manor East Mall

## IT WON'T HAPPEN WITHOUT YOU!

A vote on a referendum will be held in conjunction with the student elections on Wednesday, April 1. The referendum will be to create a fee to fund the construction, operation and programming costs of a new Intramural/Recreational Sports Facility. We are asking that all students consider the issues before the vote.

**Why should YOU vote YES!!**  
-A student financed recreation facility would ensure recreational use by students as a number one priority!  
-Students would have a voice in the type of facility constructed as well as operational policy.

**Does Texas A&M even need additional recreational space? YOU be the judge!**  
-The current facilities are overcrowded and were designed primarily for instructional use.  
-Free play recreation use is a low priority and limited to a few hours outside the prime time.  
-There is increased interest in physical fitness and increased participation in intramural and recreational sports programs.  
-The current facilities are not available for recreational use all day and class instruction is the first priority.

**How would a new recreational facility help?**  
-It would address the potential problem of losing half of the currently available recreation activity space due to the continued deterioration and possible loss of both DeWare Fieldhouse and G. Rollie White recreation space.  
-It would increase the capacity for recreational use of indoor facilities, as well as provide sufficient space to accommodate all recreational users in modern, attractive facilities that would be available for use throughout the entire day.

**Facts about recreation at A&M**  
-Approximately 80% of the student body currently participates in some form of recreation on campus  
-One in seven students participates in intramural basketball alone!  
-A random sample survey of students at Texas A&M revealed that 85% of the respondents were in support of new recreation facilities on campus.

**BACKPACKING**  
Enchanted Rock State Natural Area  
April 3-5  
Enjoy the beauty of Enchanted Rock State Natural Area during the height of wildflower season!! We'll backpack into the primitive area of the park and spend the weekend exploring the nooks and crannies of the pink granite mountain.  
The \$35.00 fee for this weekend adventure includes camping equipment, backpacks, food, permits, transportation costs, and experienced guides. An orientation meeting will be scheduled before the trip. This trip is geared for the beginner and intermediate backpacker. Sign-ups are going on now until Monday, March 30 in the Intramural-Recreational Sports Office in 159 Read. The trip is limited to 14 participants. For more info., call Patsy at 845-7826.

## IM GAMEPLAN

**ENTRIES CLOSE:**

**Track Meet:** ENTRIES CLOSE: Tuesday, March 31. SCRATCH AND INFORMATION MEETING: Thursday, April 2, 6:00 PM, 164 Read Building. RUNNING EVENTS: Preliminary and Divisionals: Corps and Fish - Thursday, April 2 at 7 PM, Kyle Field, Dorm and Ind. - Saturday, April 4, 2 pm, Anderson Track, All University - Sunday, April 5, 3 PM, Anderson Track. FIELD EVENTS: Preliminary and Divisionals: Corps and Fish - Friday, April 3, 4 PM, Anderson Track, Dorm and Ind. - Saturday, April 4, Men - 12 Noon, Women - 1 PM, All University - Sunday, April 5, 1 PM. Order of running events available in the IM-Rec Sports Office, 159 Read Building.

**Penberthy Double Elimination Softball Tournament:** Entries are still open for this tournament which will be held April 3-5. Entry fee is \$40.00. Softball turf shoes will be awarded to all Class A Champions while Class B Champions will receive batbags. T-shirts will go to champions and runnerups in all classes. All homerun hitters receive free food coupons compliments of McDonald's Restaurants. MVP of each game will receive a Penberthy Player of the Game Koozie, compliments of C.C. Creations. Thanks go to the tournament sponsors: C.C. Creations, Legends Sports Shop and McDonald's Restaurants.

**Handball Doubles:** ENTRIES CLOSE: Tues., March 31. PLAY BEGINS: Tues., April 17. EQUIPMENT: Each participant must supply a new can of balls. The winners keep the unopened can, the losers keep the used cans. ELIGIBILITY: All TAMU students, faculty, staff and their spouses may play. CLASSES: A, B, C, and D. SCHEDULES: Will be posted on the Intramural Bulletin Board after 3 PM on Thurs., April 2. Rules: USHA Rules will apply. Entry forms are available in the IM-Rec Sports Office, RM 159 Read Building.

**Superstars:** ENTRIES CLOSE: Thurs., April 2. Entries will be taken at the participant's meeting on an availability basis only. DIVISIONS: Individual - Men and Women Team - Men, Women and CoRec. ELIGIBILITY: Superstars competition is open to all TAMU students, Faculty and their spouses. COMPETITION: Participants must choose 10 of the 12 events. Everyone must participate in the obstacle course. MEETING: There will be a meeting for all participants at 8:00 AM Sat., April 4 in 164 Read to discuss rules for the competition. This meeting is mandatory.

**Pickleball Doubles:** ENTRIES CLOSE: Tues., March 31. PRACTICE TIMES: Watch the IM Bulletin Board for practice/instructional sessions. ELIGIBILITY: All TAMU students, Faculty and Staff may enter if they meet the requirements in the Intramural calendar. CLASSES: A, B, C, and D. PLAY BEGINS: Tuesday, April 7. Schedules will be posted after 3:00 PM on Thurs., April 2. Check the Bulletin Board outside the Intramural Office to see when you play. Equipment will be furnished.

## CLIMB A ROCK!

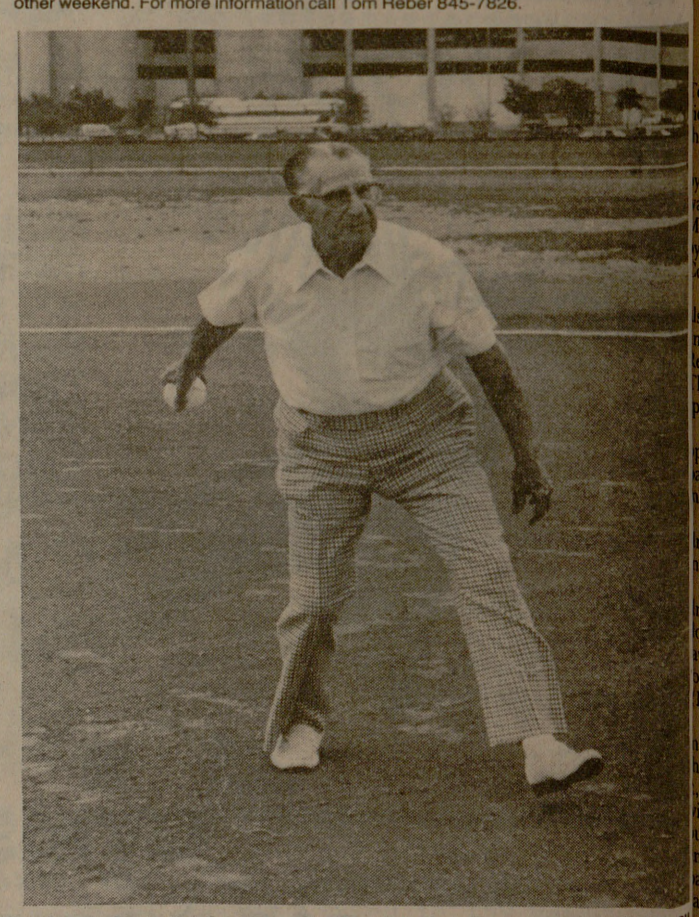
**Enchanted Rock State Natural Area Intermediate Climbing Trip**  
April 3-5  
Join us at the Rock and experience the thrills of rock climbing and rappelling. This intermediate climbing trip is open to those who wish to learn more advanced climbing skills and techniques. More challenging climbs and rappels will be introduced. The \$30.00 fee for this adventure includes rental of camping equipment, transportation costs, camping permits and experienced instruction. Sign-ups are going on now and will continue through Monday, March 30 in the Intramural-Recreational Sports Office in 159 Read. The trip is limited to 12 participants. For more information, please call Patsy at 845-7826.

**ACKNOWLEDGEMENTS**  
Donald's Intramural Highlights is in the Battalion by your local McDonald's Restaurants at University Drive, Manor East Mall on Hwy 21 and on Texas Avenue. Stories are written by Genni Miller, graphics are by Mike Cantrell and photos are by Mark Figart and Brian Crosby.

## 7th Annual Penberthy Softball Tournament 1987

**ENTRIES CLOSE:** Tuesday, March 31  
**ELIGIBILITY:** Open to all TAMU students, faculty, staff and spouses.  
**DIVISIONS:** Men's A, B, and C. Co-Rec A and B  
**AWARDS:** Softball Turf Shoes to all Class A Champions. Batbags to Men's B Champions. Shirts to champions and runner-ups in all classes.  
**RULES:** A.S.A. Rules with Intramural and Penberthy exceptions. Divisions must have 10 or more in order for the division to make. Awards will be limited to 15 per team.  
**TEAM CAPTAIN'S MEETING:** Tournament brackets may be picked up on Thursday, April 2 at 5:00 p.m. in room 164 Read Building.  
**ENTRY FEE:** \$40.00 per team (Double Elimination Tournament)  
**EXTRAS:** All Homerun hitters receive free food coupon compliments of McDonald's Restaurants. Valuable Player of each game receives Penberthy Player of the Game Koozie compliments of C.C. Creations.  
**SPONSORS:** Thanks to our sponsors: C.C. Creations, Legends Sport Shop, and McDonald's.

Tournament scheduled April 3-5, in case of rain the tournament will be rescheduled for another weekend. For more information call Tom Reber 845-7826.



Opening Ceremonies for the Penberthy Tournament are 4:45 PM Friday, April 3. Come on out for the happening!