

TRI-STATE A&M SPORTING GOODS

OPEN THURSDAY SPRING BREAK SKI CLEARANCE TIL 8:00 PM

Ski Jackets

- Jean Claude Killy
- Snuggler
- Aspen
- G.T.
- Raewiks

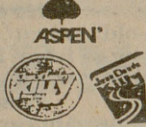


Regularly 24⁹⁵ to 79⁹⁵

70% off

Ski Bibs

- Men's and Ladies
- Nylon and Taslin



Regularly 21⁹⁵ to 82⁰⁰

25% off

Ski Socks

- Wigwam
- Allen - A

Regularly 3⁷⁵ to 7⁹⁰

70% off

Ski Gloves

- Gortex Thinsulate /Thinsulate

Regularly 4⁹⁵ to 26⁹⁵

NOW 40% off

After Ski Booties

- Men's, Women's, Children

Regularly 12⁹⁵ to 32⁹⁵

40% off

Ski Goggles

- Urex
- Bausch and Lomb
- Alpina

Regularly 14⁹⁵ to 29⁹⁵

70% off

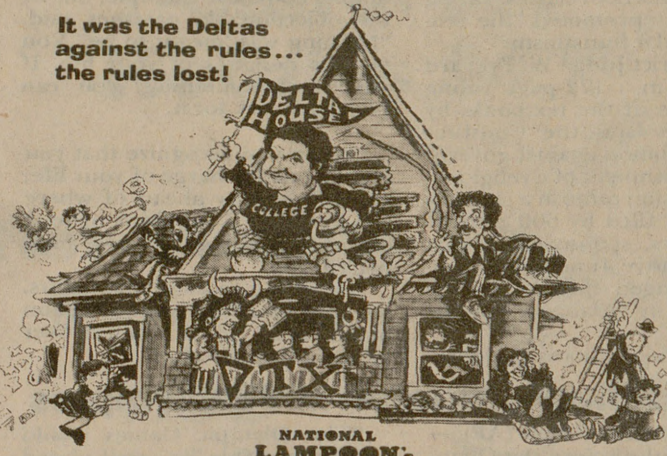
Turtle Neck Sweaters

Regularly 20⁰⁰

70% off

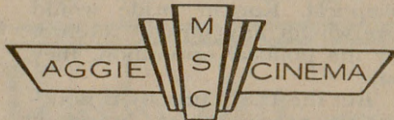
In Conjunction with

It was the Deltas against the rules... the rules lost!



NATIONAL LAMPOON ANIMAL HOUSE
A comedy from Universal Pictures

Presented by



The Grove
March 5
7:30
\$1.50

G R E E K W E E K

Popcorn and
Drinks will
Be served.

No Donuts!



Announcing

FAJITA RITA'S NEW Lunch Specials

11-4



\$3.50

March is Corona Month

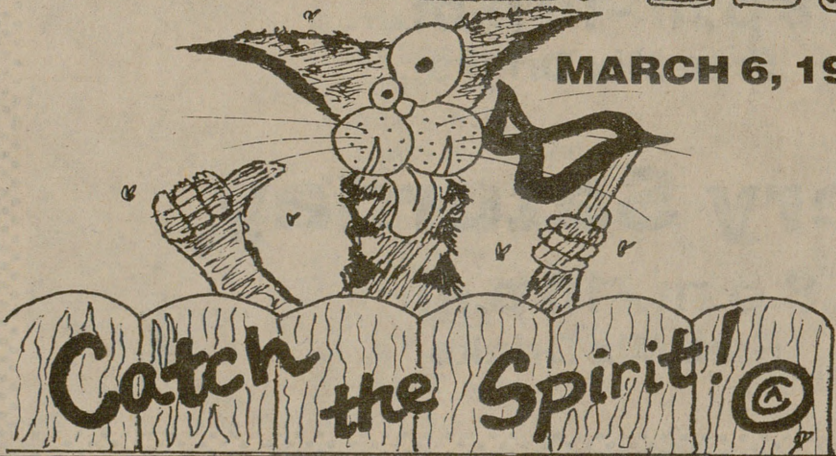
Coronas \$1.50

Hours 11am-12pm Sun-Thurs
11am-1pm Fri-Sat
4501 Texas Ave. S.

A NEW AGGIE TRADITION

Mardi Gras AT A&M

MARCH 6, 1987



PARADE - 6PM
Between MSC and Commons

MASQUERADE BALL - 9PM
Ramada Inn Pool Area
and Ballroom
Featuring THE EXECUTIVES
Tickets on sale in MSC
Now thru March 6,
10am-3pm

\$6 single/\$8 couple in advance
\$8 single/\$10 couple at the door

Highways

(Continued from page 1)

statute, puts in the fund, which is not constitutionally protected. The money Clements is taking from the highway department is the money the Legislature put into the fund in 1984 from an increase in the vehicle sales tax — a tax paid by motorists, but not dedicated to roads in the constitution. So Clements legally can dip his hands into the highway fund.

"All we are doing is retrieving funds," Rosser said. Robbins countered, "The taxes were levied for a specific purpose — for repairing state highways. He (Clements) broke a commitment." The highway department's Clark agreed.

"This is \$32.5 million we were

counting on for highway maintenance," he said. "We are now having to delay projects."

Sadler Bridges, associate director of the Texas Transportation Institute, does not object to the fund transfer.

"I have no objection to taking those funds to do whatever's necessary for the prison system's emergency situation," Bridges said. "I think, though, that what the Legislature ought to do is provide adequate funding for the prison system and replace the money taken."

Although Lt. Gov. Bill Hobby has said the money eventually should be returned to the highway fund, Clements has not yet agreed to its return.

Deregulation

(Continued from page 1)

zation of illegal haulers," he said. "There always has been. Whenever you have a system of regulatory framework, you've always had those that choose to ignore the regulations."

"But take a look at the economics. To put a maximum rate ceiling out there, and essentially eradicate the floor under which the rate structure is made, leaves the door open for large shippers to extract large discounts — many at the point of below costs...."

"The shippers are there that will force the rate structure down in many instances with total disregard as to whether or not it's below the cost level of the carriers providing the service."

Threet referred to the economic rationale behind Caperton's deregulation proposal.

He said higher intrastate rates are causing some distributors to set up outside of Texas. Some Texas businesses are shipping their goods out of state and then re-entering the state so they can take advantage of interstate rates, he said, and some companies are setting up their own trucking divisions to escape the rates set by the railroad commission.

Threet detailed the latter instance.

"Ordinarily, if there was a trucking industry that was competitive, they wouldn't have to do that. They wouldn't have to bring on these extra insurance costs and costs of the facilities because there would be a large industry that was able to spread those costs over a lot of different shippers."

"Although it's cheaper for them to set up (their own trucking divisions) than it is for them to use intrastate shippers, it would be even cheaper if there was competition so that they wouldn't have to do that."

Raven questioned the validity of the argument that high intrastate rates are driving businesses away from the state.

"If you look at the nature of the small group that has been focused in on as leaving Texas or finding Texas less attractive, you see that it's a small segment of very large multimillion-dollar corporations that have a very large leverage in the truck transportation marketplace," he said. "They're using this with a total disregard for the small-business person that's engaged in the same marketplace that they are."

Murder

(Continued from page 1)

mind is unfair," Lee said. "I've never had to do," Lee said.

Lee also said that it is unusual for an autopsy report to take up to two months to complete, especially in a case like King's murder.

"This is one of the worst I've ever had to do," Lee said. "She was stabbed 85 times, and me four and a half hours to do the initial autopsy. There are all the reports and tests done. I am still working on case."

"I have looked into doing lab work locally. I have a volume to justify all the cost of the equipment and expense"

"In reality, they're using 'economic relocation' to fund very narrow interest — to create a special place for themselves in an unregulated environment so they can dictate their own transportation costs at the expense of the majority of shippers in this state who are represented by small-business people who don't have the leverage."

Threet disagreed. "That's an attractive proposition to make, but I just think the evidence backs it up," he said.

Threet said that, in an unregulated environment, it may be the case that some large shippers would be able to get counts.

"But I don't see that as being the expense of small shippers," he said. "In fact, the evidence from deregulation of interstate commerce is that prices stay the same or go down for every class of shipper — small and large, rural and urban."

Caperton said Sunday in hearing on his bill should take in the Senate's State Affairs Committee sometime within the two weeks.

Truancy

(Continued from page 1)

child truant if he only misses class once.

"If a student skips fourth-period class to take an extra lunch break, I don't consider this a truancy problem," Ellis says. "We consider truancy an ongoing thing — something that goes back to earlier years."

Dianna Frieda, associate director of personnel in BISD, says truancy is an extended intentional absence from school which should be distinguished from skipping out for just one period.

If this is the case, Ellis says, disciplinary measures such as detention hall and suspension usually are enough to get a student back in shape.

Bryan High School holds detention hall every Saturday, Ellis says, and student must attend two hours for every class hour missed.

According to the Bryan High School student handbook, a student in "D-hall" is not able to eat, talk, sleep, or leave for any reason. The door to the detention area is locked, and no one else is admitted.

Students failing to serve an assigned detention receive an additional

detention, and failure to serve either of those two results in a parent conference plus an additional detention. A third failure to serve results in an assignment to the Interim Education Center — an on-campus-type suspension facility.

A student who has accumulated three detentions has to bring his or her parent for a conference with the principal before a fourth detention is assigned. On the fifth detention, the student is also assigned to IEC — if counseling fails, the principal begins to look to other sources for help.

These policies are strict but fair, Ellis says, and are well supported by the Parent-Teacher Association.

A&M Consolidated High School's policies on disciplinary action are similar, but on the third absence, a complaint is filed with the justice of the peace if the student is under 17 years old. It is here that the court may either fine the parent or refer the student to juvenile probation.

When compared, administrators from both school districts have similar attitudes toward truancy. Both school districts have about a 96-per-

cent daily attendance rate, less than 1 percent absentees each day. For these students, it is not how many are unexcused.

A&M Consolidated administrators says they look for a pattern of either excused or unexcused absences.

"Unexcused absences are a sign, like a red flag — a warning we may be looking at a potential dropout," Powell says.

Although excused absences are "legal," Powell says CSISD has the right to investigate an excessive number of these, probably because CSISD allows more excused absences than BISD. Consolidated allows students to be absent for 10 days in the family, serious illness in the family, medical appointments, dangerous weather and road conditions, quarantine, and certain religious holidays, while Bryan allows excused absences for personal death in the family, or official business.

All other absences, even those noted from the parent, are considered excused.

MSC CAFETERIA

MEMORIAL STUDENT CENTER-TEXAS A&M UNIVERSITY

WEEKDAY SPECIALS

\$ 3.18 PLUS TAX

MONDAY EVENING	SALISBURY STEAK Mushroom Gravy, Whipped Potatoes, Choice of Vegetable Roll or Cornbread, Butter
TUESDAY EVENING	MEXICAN FIESTA Two Cheese Enchiladas with Chili, Rice, Beans, Tostitos
WEDNESDAY EVENING	CHICKEN FRIED STEAK Served with Cream Gravy, Whipped Potatoes, Choice of Vegetable, Roll or Cornbread, Butter
THURSDAY EVENING	ITALIAN DINNER Spaghetti, Meatballs, Sauce, Parmesan Cheese, Salad, Hot Garlic Bread
FRIDAY EVENING	FRIDAY NIGHT FISH FRY Tartar Sauce, Coleslaw, Hush Puppies, Choice of Vegetable

WEEKEND SPECIAL

\$ 2.89 PLUS TAX

SATURDAY NOON & EVENING	FRIED CHICKEN Mashed Potatoes with Country Gravy, Choice of Vegetable Roll or Cornbread, Butter
SUNDAY NOON & EVENING	ROAST TURKEY DINNER Served with Cornbread Dressing, Cranberry Sauce, Gravy, Choice of Vegetable, Roll or Cornbread, Butter

TEA OR COFFEE INCLUDED AT NO EXTRA CHARGE ON SPECIALS

EVENING SPECIALS AVAILABLE 4:00 PM TO 7:00 PM DAILY
MSC CAFETERIA OPEN 11:00 AM-1:30 PM AND 4:00 PM TO 7:00 PM DAILY

"Quality First"