

GM strike over; layoffs in 8 states still in effect

KOKOMO, Ind. (AP) — Workers began returning to a key parts plant Sunday after a strike that forced layoffs of more than 47,000 General Motors Corp. workers nationwide, but GM officials could not say when the layoffs would end.

The six-day strike at the Delco Electronics plant triggered layoffs in eight states and threatened to shut down the nation's No. 1 automaker as the supply of radios and electronic parts for all GM cars was exhausted.

The 7,700 United Auto Workers at the GM subsidiary walked off the job Nov. 17 in a dispute over subcontracting and a plan to produce Delco's newest radio line in Mexico.

A contract resolving those issues and implementing Japanese management techniques was approved overwhelmingly Saturday by UAW Local 292.

UAW shop chairman Mike Thayer said some production workers returned at midnight Saturday

and the first full shift would start at midnight Sunday.

John Mueller, a GM spokesman in Detroit, said he didn't know when the stalled assembly plants might resume production.

Delco spokeswoman Marilyn Grant said new shipments out of Kokomo were uncertain and would vary among the plant's departments. The strike was the first to test GM's new "just-in-time" inventory system, in which parts are made to order and shipped immediately to assembly plants, rather than stockpiled until needed.

The system, which originated in Japan, eliminates costly inventory but is vulnerable to shutdowns at key plants. Mueller said GM needed the system to compete with Japanese automakers and did not plan to revise or eliminate it.

"You're not going to throw out the baby with the bathwater," he said. "Just-in-time is an important part of our continuing effort to be

world-class competitive. It helps keep our costs down."

Because of the system, the effects of the strike were seen in some GM plants within 24 hours. By Friday, 37,550 workers had been laid off around the country. In all, more than 47,000 had been laid off at one point or another.

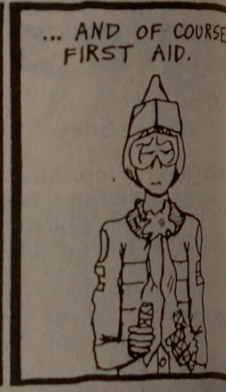
Mueller said more than 40,000 workers still would be idled today at assembly plants in Missouri, Louisiana, Ohio, Michigan, Kentucky, Kansas, Indiana and Delaware.

Thayer predicted the just-in-time system would lead to more cooperation between management and workers to avoid similar strikes.

"It helped our position by shutting them down quicker," he said. "But it's the thing you have to do to stay competitive with the Japanese."

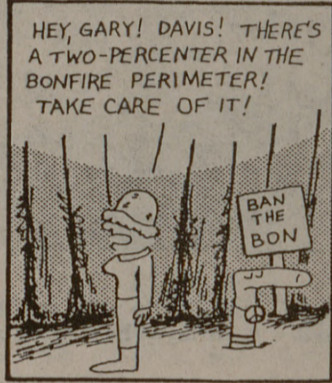
Under the new pact, Delco agreed to keep radio production in Kokomo until the 1991 model year if other cost-cutting measures and Japanese management techniques were implemented.

Warped



by Scott McCulloch

Waldo



by Kevin Thomas

Regents

(Continued from page 1)

its proposed deadline because of the inconvenience to the Corps of Cadets.

The Board reconvened Saturday and heard a recommendation from the Committee for Academic Campuses requesting that an Institute for Pacific Asia be established at A&M.

Speaking for the proposed institute, Deputy Chancellor Bill Mobley said the IPA would be consistent with the economic development of Texas as well as the unique strengths of A&M. Mobley chaired the task force appointed in May 1985 by President Frank E. Vandiver to study the feasibility of such a project.

In a proposal sent to the chancellor's office, Vandiver wrote that unlike a similar Center for Asian Studies at UT which deals almost exclusively with culture, the focus of the IPA at A&M would be on science, technology and economic development.

He wrote that the primary geographic focus of the institute would be on the Northern Pacific core of China, which includes Taiwan and Hong Kong, Japan and Korea. However, the proposed institute is meant to complement the UT center.

Funding for the IPA would consist of an initial commitment of \$120,000 from the Available University Fund, with subsequent additions of \$90,000 during fiscal year 1987-1988, and \$30,000 during fiscal year 1988-1989. The proposal shows that the IPA would become entirely self-supportive within three years.

The committee also presented a proposal for the establishment of a Center for Environmental Research in Austin, which would become operational by Jan. 1, 1987. The center would be jointly operated by UT, A&M and the city of Austin and is designed to fill a gap in existing environmental management technology, as well as provide for an increase in research opportunities for all three.

A management committee consisting of representatives from the three entities is proposed to oversee the administration of the center, which would be located at the Austin Hornsby Bend Facility.

In other business, the president of Prairie View A&M, Dr. Percy A. Pierre, proposed a five-part reorganization plan to consolidate eight colleges at the university into six.

450 fowls needed for senior citizens

Texas chef plans turkey for 10,000

SAN ANTONIO (AP) — If the thought of preparing Thanksgiving dinner for 10 has you down, take heart.

You could be in Ernest Jimenez's shoes and be finalizing plans for feeding 10,000.

As chef of the Seventh Annual Jimenez Thanksgiving Dinner, Ernest — who is no relation to Raul Jimenez, president and chairman of the board of Jimenez Food Products Inc. and founder of the annual senior citizens' meal — is the man who makes sure dinner gets on the table.

Certainly Ernest is well qualified for the job. A certified chef and charter member of the Texas Chef's Association, Ernest recently retired after 24 years as executive chef in charge of the Officers Club, Officers Club Annex and NCO Club at Fort Sam Houston.

Those years of experience mean Ernest is no stranger to cooking for large groups, although he is the first to admit he previously was more used to thinking in terms of hundreds, not thousands, when he prepared food for large numbers of people.

A personal friend of Raul's, Ernest became involved in the Thanksgiving dinner when they were started in Fort Worth.

"Only for Mr. Jimenez would I attempt to do something like this," Ernest said. "It's a big job, but he is such a generous man; you can't help but try to do what you can."

Ernest explained that he and Raul became friends many years ago when they used to work together planning parties for Raul's employees.

Although it was Ernest's job to plan the menus for the gatherings, the men said that they often worked together on the duty and quickly discovered that as a team, each man's talents complemented the other's.

The menu for the Thanksgiving Day dinner includes 450 large turkeys, 100 gallons cranberry sauce, 810 gallons of green beans, 810 gallons of yams, 350 pounds of diced onions, 350 pounds of bell peppers; 200 pounds of diced celery and 1,200 loaves of bread.

Also in the list are 200 pounds of chicken, 700 pounds of pork trimmings, 300 dozen eggs, 100 pounds of margarine, 150 pounds of baking powder, 20 pounds of cinnamon, 20 pounds of brown sugar, 150 pounds of salt, 32 cases of coffee, 15,000 soft drinks, six cases of coffee cream and 12,000 packets of sugar.

Also, 150 gallons of canned milk, 250 gallons of pumpkin pie, 150 pounds of cornstarch, 144 bunches of parsley, 400 pounds of coffee, 15,000 soft drinks, six cases of coffee cream and 12,000 packets of sugar.

And when the day is over and 10,000 senior citizens have had a hot meal, as well as a chance to visit with friends, dance and listen to music, where will the two project leaders be?

"Sleeping very comfortably," said Ernest.

"Resting," said Raul with a laugh.

"It takes me about three days to recuperate," he said. "I'm a light sleeper and don't need more than five hours sleep. But that night I'll be good — about seven, eight, maybe even hours."

McDONALD'S®

INTRAMURAL HIGHLIGHTS

DRIVE-THRU SERVICE
University Drive
Hwy 21
Texas and S.W. Parkway
Manor East Mall
BREAKFAST EVERY MORNING

IM GAMEPLAN

ENTRIES CLOSE

Archery Singles - ENTRIES CLOSE: Tuesday, November 25; CONTEST DATE: Tuesday, December 2, 6pm, RM 304 Read. Participants will schedule a time to shoot at 6pm, 7pm, 8pm, or 9pm. DIVISIONS: Men's and Women's in Class A or B. RULES: FITA Rules apply. Each participant will shoot 30 arrows at 15 yards. Equipment: Participants are asked to provide their own equipment, although a few bows will be available. There are restrictions on bows. For more information call Patsy at 845-7826.

SPECIAL THANKS

M/REC-SPORTS

A special thanks to General Motors for their sponsorship of the Flag Football CoRec Tournaments. Congratulations to those champions who received General Motors t-shirts.

Flag Football
 Class A Happyfeet
 Class B Wild Cats
 Class C Dr. 2B

Sign-ups for Intramural CoRec Basketball sponsored by General Motors begin Monday, December 1.

COMING SOON

Entries for the following sports will open Monday, December 1. Organize your team now to enter early:

Basketball, 3-on-3 Basketball, Outdoor Soccer.



OFFICIALS WANTED

There will be an orientation meeting for anyone interested in officiating intramural Soccer and Basketball on Monday, December 1, 6pm, 15 Read. For more information contact Mike Waldron or Chris Kopernick at 845-7826.

ACKNOWLEDGEMENTS

McDonald's Intramural Highlights sponsored in the Battalion by your local McDonald's Restaurants at University Drive, Manor East Mall, Hwy 21, and on Texas Avenue. Stories are written by Genni Miller graphics are by Mike Cantrell and photos are by Tom McDonnell and Brian Crosby.

OUTDOOR EQUIPMENT RENTAL

This was printed incorrectly last week. These are the correct prices for the appropriate categories.

Thanksgiving Holiday Special			
Outdoor Equipment Rental			
	Students	Fac/Staff w/Rec. ID	Fac/Staff w/o Rec. ID B/CS Residents
TENTS			
6 person Timberline.....	\$20.00		\$24.75
4 person Timberline.....	13.75		18.75
3 person Dome.....	12.50		15.00
2 person Timberline.....	8.00		9.75
2 person Catskill, Pup.....	6.75		8.00
SLEEPING BAG	6.75		8.00
SLEEPING PAD	2.50		3.00
BACKPACK	7.50		9.00
LANTERN	6.25		7.50
STOVES			
Coleman 2 burner.....	6.25		7.50
Coleman Peak 1.....	5.50		6.75
Fuel bottle.....	1.25		1.50
Fuel bottle with fuel.....	2.50		3.00
COOKING EQUIPMENT			
Large cook kit.....	3.75		4.25
Tote bag.....	1.25		1.50
WATER CONTAINERS			
Collapsible water container (2 gal.).....	1.75		2.25
Plastic water bottle (1 qt.).....	1.00		1.25
Sierra cup.....	.75		.90
Ice chest (48 qt.).....	6.25		7.50
TOOLS			
Shovel.....	1.00		1.25
Folding Saw.....	1.50		1.75
WATERCRAFT*			
Canoe.....	34.50		41.25
Kayak.....	25.50		30.50

*All watercraft include paddles, lifejackets, and car racks if needed.
A Program of Intramural-Recreational Sports

FLAG FOOTBALL ALL-UNIVERSITY CHAMPIONS

Congratulations to the All-University Champion's in Flag Football.

Class A: Mens Womens CoRec	CC Creation Jess 3rd and long Happyfeet
Class B: Men Women CoRec	Old Army Mike Knockouts Wildcats
Class C: Mens CoRec	In K Homeboys Dr. 2B