

# HELP!!

Rudder Theatre Complex  
Needs Student Workers  
**For Stagehand and  
Spotlight Work.**

To Apply Come To:  
Rudder Auditorium

Wed. Sept. 17 7 p.m.

**COME SIGN UP!**

## Waterbeds & More

"Quality Waterbeds,  
Inexpensive Prices"  
1805 S. College / 822-6248

- Conditioner.....99c
- Fill kit.....2.99
- Drain pump.....2.99
- Fill and drain kit.....4.99
- Heater.....39.99
- Patch kit.....2.99
- Stand-up liner.....13.99
- Print sheets.....23.99
- Deluxe mattress.....11.99
- Padded side rails.....22.99



**\$139<sup>95</sup>**

### EACH BED INCLUDES:

- Headboard & frame
- Solid wood pedestal
- Decking & fill kit
- Stand-up safety liner
- Mattress with 15-yr. warranty
- Heater with 10-yr. warranty

## Hijack victim returns home to Houston

HOUSTON (AP) — Former hijacking victim David Allison was met with applause at Houston Hobby Airport, where he said he will not let last week's tragedy in Pakistan stop him from traveling abroad again.

"It was a tragic situation," Allison said Wednesday night. "There was a lot of misery. But in two or three weeks, I'll be ready to go back."

The hijacking of the Pam Am jet Friday ended with the four terrorists opening fire on passengers after a 17-hour standoff at the Karachi, Pakistan, airport. Twenty people were killed and more than 100 wounded.

"There had been indications during the day that something might happen," he said of the ordeal. "Whenever people are carrying guns, there's that potential. When the lights went down, I felt things were about to break."

Allison, a drilling company sales executive, arrived at the airport in a wheelchair. His ankles were in thin casts because of injuries he suffered from jumping from the plane.

## Drug testing to start for 1,700 in Harris County

HOUSTON (AP) — Random drug testing will begin next month for all 1,700 employees at the Harris County Sheriff's Department, an agency spokesman says.

The urinalysis tests, to be performed by the Harris County medical examiner's office, will show the presence of marijuana, cocaine, barbiturates and amphetamines.

Mark Kellar, director of planning and development for the sheriff's department, said, "What it entails is a random selection process for universal testing, and that means each person in the department is eligible to be tested at any given time."

Tests will occur monthly and test subjects will be chosen by "drawing (names) from a hat," Kellar said.

If an employee tests positive twice for drugs, the department will take "appropriate disciplinary action," he said.

## TDC employee reclassification to cut wages

HUNTSVILLE (AP) — A system-wide job reclassification of prison employees will result in monthly pay cuts ranging from \$200 to \$1,000 for some health services workers in the corrections department, employees said.

Pay changes for Texas Department of Corrections Health Services Division take effect Oct. 1.

Salary cuts stem from the staff reclassification, which is being done according to the state's Position Classification Act, prison officials said.

TDC spokesman Charles Brown said health services is the first staff division to be reclassified. The entire TDC staff of about 5,000 — excluding guards — eventually will be affected, he said.

## What's up

### Friday

- WESLEY FOUNDATION:** will meet at the foundation at 7 p.m. for a fall retreat. For more information call 846-4701.
- PUERTO RICAN STUDENT ASSOCIATION:** will meet at 7 p.m. in 502 Rudder.
- TAMU JUDO:** will practice at 7 p.m. in 263 G. Rollie White. New members welcome.
- KOREAN STUDENT ASSOCIATION:** will meet at 7 p.m. in 507 Rudder.
- DATA PROCESSING MANAGEMENT ASSOCIATION:** will be selling diskettes and having a membership drive in the lobby of the Blocker Building.
- THE NAVIGATORS:** will hold a rally at 7 p.m. in 501 Rudder.
- MSC VARIETY SHOW:** applications are available in 221 MSC. Deadline is 5 p.m. today.
- STUDENT GOVERNMENT:** applications for election commissioner, internal communications chairman, fish and Traditions Council, Parents Weekend, Muster, the Big Event and freshman programs are now being accepted in 221 Pavilion. Applications are due Monday. For more information call 845-3051.
- STUDENT GOVERNMENT:** now accepting applications for Judicial Board members in 221 Pavilion. Deadline is today.
- WOMEN'S CHORUS:** will hold auditions today in the vocal music office, 003 MSC. For more information call 845-5974.

### Saturday

- KKYS 105 AND BRYAN-COLLEGE STATION JAYCEES:** will show the Louisiana State University game at 6 p.m. at VFW Post 4692 on FM 2818. For more information call 775-7885.
- PRE-LAW SOCIETY:** will give a mock LSAT at 9 a.m. in 221 Harrington Classroom.
- SAILING CLUB:** will have a work party at 9 a.m. at Commander Campbell's at Lake Somerville.
- TAMU POLO CLUB:** will hold an orientation and barbecue at 10 a.m. at the polo barn on Turkey Creek Road.
- TAIWANESE STUDENT ASSOCIATION:** will have a multicultural festival at 6 p.m. in 226 MSC. New members welcome.
- COLLEGE OF LIBERAL ARTS:** appointments for auditions with the Brazos Valley Symphony Orchestra are being accepted at 846-7659. Auditions will be held Saturday.
- GRADUATE STUDENT COUNCIL:** will sponsor a workshop for graduate students who are interested in starting or improving a graduate student organization in their department on Saturday from 9 a.m. to noon. The workshop is free and refreshments will be served. For more information call 845-2151 or 845-1151.

### Sunday

- LUTHERAN COLLEGIANS:** will hold a Mexican dinner and bible study at 5:30 p.m. at the Beautiful Savior Lutheran Church.
- ATARI USER GROUP:** will have a public domain software swap at 7:30 p.m. in 102 Teague.
- TAMU INTERNATIONAL FOLK DANCE CLUB:** will hold a special session for newcomers and beginners at 8 p.m. in the Memorial Student Center (check the monitor room).

### Monday

- STERLING C. EVANS LIBRARY:** will offer a series of 45-minute tours designed to familiarize users with the resources and services available in the library. Sign-up sheets are posted near the reference desk on the first floor. The tours will be given today 9 a.m., 11 a.m. and 3 p.m. For more information call 845-5741.
  - MANAGEMENT SOCIETY:** Arthur Wolfe will speak at 7 p.m. in 126 Blocker.
  - INTRAMURAL RECREATION SPORTS:** entries open for innertube water basketball and golf doubles.
  - AGGIE ALLEMANDERS:** will give square-dance lessons and hold a meeting afterward at 7 p.m. in 230 MSC.
  - OFF-CAMPUS AGGIES:** will hold voting for apartment council president from 9 a.m. to 4 p.m. in the Memorial Student Center hallway.
  - DATA PROCESSING MANAGEMENT SOCIETY:** Mobil Oil Corp. will give information on careers in data processing at 7 p.m. in the Ramada Inn Penthouse.
  - STUDENT GOVERNMENT:** applications for Traditions Council and the Big Event are due today. Applications are available in 221 Pavilion.
  - FRESHMAN LEADERSHIP DYNAMICS:** applications are available in the MSC from 10 a.m. to 2 p.m. through Monday.
- Items for What's Up should be submitted to The Battalion, 216 Reed McDonald, no less than three working days prior to desired publication date.**

## Keep An Aggie Representing Texas A&M

Join Aggies For Barton

1st Organizational Meeting

Tues Sept. 16 7:30pm

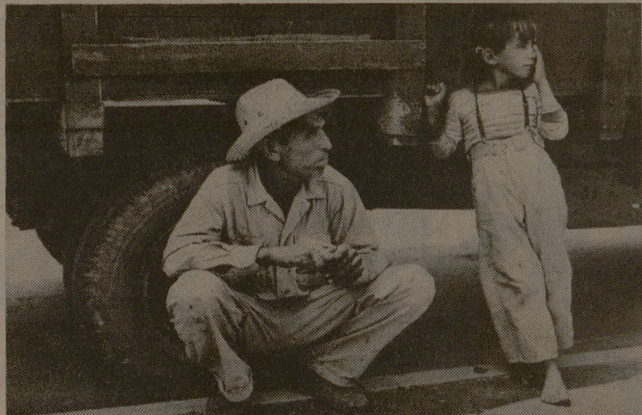
410 Rudder

For more information call:

Heidi Kemp 696-1552

Paid for by the Congressman Joe Barton Committee

## A RUSSELL LEE PORTFOLIO: EARLY TEXAS PORTRAITS



a special screening of the video tape  
**Photographer: Russell Lee**  
to be presented by  
**Ann Mundy**  
Producer/Director  
4:00 pm, Sunday, September 14, 1986  
CAED Gallery Langford Architecture Center  
Reception following.

Portrait exhibition continues through October 8  
CAED Gallery hours 8-5 weekdays & 12-5 Saturday and Sunday

This exhibition was organized by the Amarillo Art Center with funding from TexArt/150, the Texas Commission of the Arts, Mr. and Mrs. R.T. Alexander and Mrs. Francie Whittenburg Klein. Local support from Texas A&M University Art Exhibits and the College of Architecture and Environmental Design.

## 1986 Fall Workshop Registration Begins September 15

### Arts & Crafts

- Airbrushing
- Appalachian Basket Weaving
- Basic Basket Weaving
- Calligraphy
- Drawing
- Flower Drying & Arranging
- Jewelry Casting
- Jewelry Construction
- Matting & Framing
- Natural Dyeing
- Pottery-Wheel Throwing
- Pottery-Wheel Throwing
- Pottery-Wheel Throwing
- Quilting
- Quilting
- Stained Glass
- Stained Glass
- Tole Painting
- Ukrainian Eggs
- Ukrainian Eggs
- Watercolor
- Woodworking
- Wooden Bookcases
- Corn Husk Wreaths
- Grapevine Wreaths
- Pinecone Wreaths

- Thurs, Oct 2-30
- Tues, Oct 28-Nov 11
- Mon, Oct 27-Nov 10
- Tues, Oct 7-Nov 11
- Mon, Sept 22-Oct 20
- Mon, Oct 6, 13
- M/W, Oct 13-29
- T/Th, Oct 14-30
- Wed, Sept 24-Oct 15
- Wed, Oct 22-Nov 12
- T/Th, Sept 30-Oct 9
- Thurs, Sept 25-Oct 30
- Thurs, Sept 25-Oct 30
- Mon, Oct 13-Nov 17
- Mon, Oct 13-Nov 17
- Wed, Sept 24-Oct 15
- Mon, Nov 3-24
- Wed, Sept 17-Oct 8
- Wed, Nov 5-Dec 3
- Thurs, Sept 25-Oct 16
- Mon, Sept 29
- Mon, Nov 3, 10
- Wed, Oct 8-Nov 5
- Tues, Sept 23-Oct 14
- Tues, Oct 21-Nov 11
- Mon, Oct 20-Nov 10
- Mon, Oct 20
- Mon, Nov 3
- Thurs, Nov 13

- 6-7:30pm \$14
- 6:30-9pm \$14
- 7-9:30pm \$14
- 6:30-8:30pm \$20
- 6-8pm \$18
- 6-9pm \$10
- 5:30-7:30pm \$24\*
- 5:30-7:30pm \$24\*
- 7-9pm \$18\*
- 7-9pm \$18\*
- 7-9pm \$17
- 5-7pm \$25\*
- 7:30-9:30pm \$25\*
- 5-7pm \$25\*
- 7:30-9:30pm \$25\*
- 7-9pm \$14
- 7-9pm \$14
- 6-9pm \$25\*
- 6-9pm \$25\*
- 7-9pm \$18\*\*
- 6-9pm \$12\*\*
- 6-8pm \$15\*\*
- 6-9pm \$25\*
- 6:30-9pm \$25\*
- 6:30-9pm \$25\*
- 7-9pm \$24
- 7-9pm \$12\*
- 6-9pm \$14\*
- 6-9pm \$15\*

### Aerobics/Dance

- Advanced Aerobic Dance-A
- Advanced Aerobic Dance-B
- Beginning Aerobic Exercise-C
- Beginning Aerobic Exercise-D
- Beginning Aerobic Exercise-E
- Beginning Aerobic Exercise-F
- Beginning Aerobic Exercise-G
- Beginning Aerobic Exercise-H
- Beginning Country & Western Dance
- Advanced Country & Western Dance
- Jitterbug

- M/W, Sept 17-Oct 20
- M/W, Oct 22-Nov 24
- M/W, Sept 17-Oct 20
- M/W, Oct 22-Nov 24
- T/Th, Sept 16-Oct 16
- T/Th, Sept 16-Oct 16
- T/Th, Oct 21-Nov 20
- T/Th, Oct 21-Nov 20
- Wed, Sept 24-Oct 29
- Wed, Sept 24-Oct 29
- Mon, Sept 22-Oct 20

- 6-7pm \$15
- 6-7pm \$15
- 7-8pm \$15
- 6-7pm \$15
- 7-8pm \$15
- 6-7pm \$15
- 7-8pm \$15
- 6-7:15pm \$15\*
- 7:30-8:45pm \$15\*
- 6-7:15pm \$10

### Special Interest

- Animal Behavior Modification
- Auto Mechanics
- Bartending
- Bike Maintenance
- Bike Maintenance
- Intermediate Bike Maintenance
- Breads
- Beginning Guitar
- Beginning Guitar
- Herb Gardening
- Home Landscaping
- Photography-Picture Taking
- Photography-Picture Taking
- Studio Photography
- Scuba Diving
- Sign Language
- Advanced Sign Language
- Conversational Spanish
- Intermediate Spanish

- Thurs, Oct 2-30
- Thurs, Sept 25-Oct 23
- M/W, Sept 22-Oct 22
- M/W, Sept 22-Oct 6
- T/Th, Nov 4-18
- M/W, Nov 3-12
- Tues, Oct 7-21
- T/Th, Sept 18-Nov 13
- T/Th, Sept 18-Nov 13
- M/W, Sept 29, Oct 1
- Tues, Sept 30-Oct 21
- Thurs, Sept 18-Oct 9
- Mon, Sept 22-Oct 13
- M/T, Oct 20, 21
- MTWTh, Sept 22-Oct 7
- T/Th, Sept 23-Oct 23
- T/Th, Oct 28-Dec 4
- T/Th, Sept 23-Oct 30
- T/Th, Sept 23-Oct 30

- 7:30-9pm \$13
- 7-9pm \$19
- 7:10pm \$36
- 7-9pm\* \$20\*
- 7-9pm\* \$20\*
- 7-9pm\* \$14
- 6-9pm \$15
- 6:45-8:15pm \$30
- 8:30-10pm \$30
- 6:30-9:30pm \$15
- 7-9pm \$14
- 5-6:30pm \$10
- 5-6:30pm \$10
- 7-10pm \$25
- 7-10pm \$15
- 7:30-9pm \$150
- 7-9pm \$25
- 6:30-8pm \$25
- 8-9:30pm \$15

\* Craft Card is included. \*\* All supplies are included.

### Business

- Advertising and Marketing Strategies for Small Business
- Interviewing
- Investing
- Resume Writing

- Wed, Oct 1-29
- Tues, Dec 9
- Tues, Sept 30-Oct 21
- Wed, Dec 3, 10

- 7-9pm \$13
- 6-9pm \$5
- 7:30-9pm \$10
- 6-9pm \$10

For a full listing of class dates, contact University Plus. All nonstudents must purchase a \$2 membership card when registering for class. A full 7 days notice must be given for customer-initiated refunds. No refunds can be issued for Visa/MC purchases.

University **PLUS**  
845-1631