

IF YOUR BOOKSTORE DOESN'T CARRY SHARP CALCULATORS, CALL AND COMPLAIN.

Sharp calculators are designed to be first in their class.

Our EL-533 financial calculator for example, has twenty memories compared to just five for the competition. So it lets you do complex calculations like discounted cash flow analysis.



For those who prefer lab coats to pinstripes, there's our EL-506A scientific calculator. With its 10-digit display, direct formula entry and 93 scientific functions, it makes performing even the most difficult calculations easy as pi.

And because it's sleek, slim and stylish, you'll never look out of step as science marches on.

The fact is, Sharp makes all kinds of ingenious little calculators that can help get you through college. And help you pay for it.

Because unlike college... they're surprisingly affordable.

Calculators, Audio, A/V Equipment, Banking Systems, Broadcast Cameras, Cash Registers, Computers and Peripherals, Copiers, Electronic Components, Electronic Typewriters, Facsimile, Medical Products, Microwave Ovens, Televisions, Vacuum Cleaners, Video Recorders. © 1986 Sharp Electronics Corporation, Sharp Plaza, Mahwah, New Jersey 07430.

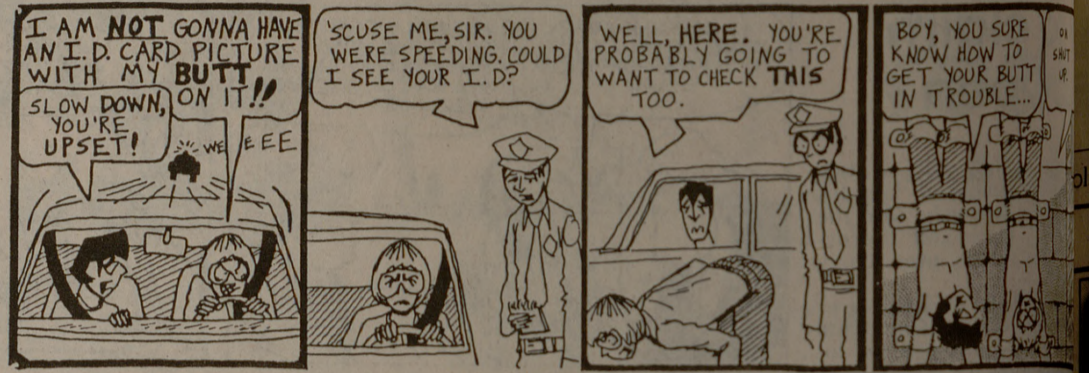


FROM SHARP MINDS COME SHARP PRODUCTS™



Warped

by Scott McCull



Waldo

by Kevin Thom



Tax Reform

(Continued from page 1)

on the amount of the grant above tuition and fees.

And there are no longer any deductions for interest paid on student loans, which before were treated as consumer debt and were not taxed.

"It seems a strange interpretation of 'fairness' to create a situation in which affluent students whose education is paid for by their parents have no tax liability," Atwell said, "while needy students who finance their schooling through a combination of summer and term-time jobs

and scholarships might find themselves paying taxes on their grants."

The bill also would impose a ceiling of \$150 million on the amount of tax-exempt bonds which any independent institution of higher education could have outstanding at one time.

This provision would not affect public institutions like Texas A&M, but Atwell said about 22 private schools will be affected. Levery said this will most likely include Southern Methodist University, Baylor University and Rice University.

This is the first piece of legislation

which treats public and private colleges and universities differently, Atwell said.

A number of new restrictions were added, but Levery said and UT escaped the serious regarding tax-exempt bonds.

A positive side to the new law is that it creates a new tax credit for businesses and industries which create grants and contracts with colleges and universities for research, Levery said. Business industries will receive a credit of one percent on any amount above what they had given in the past.

Hijacking

(Continued from page 1)

day five security guards have been suspended for suspected negligence because they were guarding the gate through which the hijackers, disguised as guards, drove to reach the plane.

Over the weekend, Pakistani officials offered conflicting statements about the number of people killed and the fate of the hijackers.

Officials said Sunday that it appeared 14 passengers and a stewardess were killed.

Officials also said initially that hijackers were killed.

Zia said he did not know whether the captain never should apply to the next day and we'll find where the fault was," he said.

McDONALD'S®

INTRAMURAL HIGHLIGHTS

DRIVE-THRU SERVICE
University Drive
Hwy 21
Texas and S.W. Parkway
Manor East Mall
BREAKFAST EVERY MORNING

Extramural Sports Club

Interested in learning a new and different sport? Want to compete against other schools or club teams in the area? Extramural Sports Clubs may be for you! There are 28 extramural clubs preparing to gear up for the school year. If you have an interest in a particular sport contact the appropriate person below or attend the organizational meeting.

If you would like to start a sport club not listed below, or if you need more information, contact Paula Opal at 845-7826.

Temporary Contact List

Sport	Contact	Phone	Meeting
Archery	Gary Boecker	764-8346	Organizational Meeting
Handicapped Athletes	Sam George	846-4698	
	Jim Magdaleenski	696-4138	
Badminton	Rick Dean	280-5257	Sept. 12 7PM 351 GRW
Boxing	Jimmy Arca	822-2172	
Cycling	Judd Michael	845-3248	
	Bruce Johnsen	845-5641	
Fencing	Oz Shah	268-0449	
Field Hockey	Wayne Snyder	260-4896	Sept. 8 7PM 307 Read
Gymnastics	Todd Bryan	696-2464	
Handball	Bobby Perez	693-1891	7PM 263 GRW
Judo	Chris Menzel	696-3817	Sept. 8 7PM Dave Green's House
Lacrosse	Barb Cupps	696-7826/845-8783	
Polo	Mark Mills	696-4360	Sept. 10 8PM Lobby, Read
Racquetball	Larry Isham	846-7070	Sept. 9 7PM Rudder
Roadrunners	Sharon Beach	693-5268	Sept. 10 7PM Dick Freeman Arena
Rodeo	Tim Cone	846-9772	
Men's Rugby	Jeannie Von Stultz	696-3817	Sept. 8
Women's Rugby	Elvin Smith	696-1291	Sept. 20 4PM Brazos Gun Club
Trap & Skeet	John Baldwin	696-9219	
Soccer	Craig Fitzgerald	846-1411	
Ultimate Frisbee	Robert Rayburn	260-7985	Sept. 15 5PM 303 Read
Men's Volleyball	Jenni Smith	696-3261	Sept. 9 5PM 303 Read
Women's Volleyball	Rick Abbott	846-8330	
Waterpolo	Gary Cladwell	696-3466	
Waterski	Mike Phillips	260-1939	
Weightlifting	Robert Simpson	846-2852	Sept. 10 5PM 260 GRW
Wrestling	Paul Slater	260-1876	Sept. 10 7PM Rudder
Bowling			

ACKNOWLEDGEMENTS

McDonald's Intramural Highlights is sponsored in the Battalion by your local McDonald's Restaurants at University Drive, Manor East Mall on Hwy 21 and on Texas Avenue. Stories are written by Liz Dillow, graphics are by George Clendenin and photos are by Tom McDonnell and David Tatge.

Officias Wanted

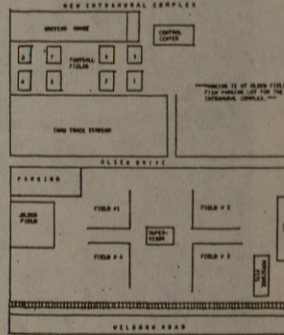
There will be a meeting for all students interested in officiating Indoor Soccer at 6 pm on Monday, Sept. 8 in Room 167 Read. For more information call 845-7826.

Im Gameplan

ENTRIES OPEN
INDOOR SOCCER - ENTRIES OPEN: Monday, Sept. 8 and close Tues, Sept 16; ENTRY FEE: \$25.00/team; CLASSES: A, B, C and D offered in Men's and Women's Independent, Men's and Women's Dorm and Corec; RULES: NCAA with IM exceptions; TEAM CAPTAIN'S MEETING: Thursday, Sept 18, 5 PM, 164 Read Bldg. Schedule will be available at this meeting.
TENNIS SINGLES - ENTRIES OPEN: Mon, Sept. 8 and close Tues, Sept. 16; NO ENTRY FEE: PLAY BEGINS: Tues, Sept. 23; CLASSES: A, B, C and D in Men's and Women's Independent and Men's and Women's Dorm; EQUIPMENT: Players provide their own equipment and MUST provide a NEW UNOPENED can of good quality balls. SCHEDULES: Posted after 3 PM, Thursday, Sept 18.
ENTRIES CLOSE
Flag Football : Entries close Sept. 9 ENTRY FEE: \$30.00/team. PLAY BEGINS: Sunday, Sept. 14. CLASS: A, B, C and D offered in Men's Women's Dorm, Men's and Women's Faculty/Staff/Grad. and Corec. RULES: NIRSA with IM exceptions. TEAM CAPTAIN'S MEETING: Dorm and Independent, Thurs, Sept. 11, 5 PM 601 Rudder; Corps, 7:30 PM, Trigon.
Preseason Flag Football : Entries close Sept. 9. ENTRY FEE: \$10.00/team. PLAY BEGINS: Friday, Sept. 12 through Sept. 14. SCHEDULES AVAILABLE: After 3 PM, Thur, Sept. 11, 159 Read Building. NO RESCHEDULES! Single elimination tournament. SPONSORED BY THE TAMU OFFICIALS ASSOCIATION.
16" Softball : Entries close Sept. 9 ENTRY FEE: \$25.00/team. CLASSES: A, B, C and D offered in Men's and Women's Dorm, Men's and Women's Independent and Corec. TEAM CAPTAIN'S MEETING: Thurs, Sept. 11, 6 PM, 164 Read Bldg.
Table Tennis Singles : Entries close Sept. 9. CLASSES: A, B, C and D offered in Men's and Women's. RULES: USTTA Rules will apply. Matches are 2 out of 3 games to 21 point, 2 point advantage to win.

New Intramural Complex and Driving Range

RAINOUT #845-2625



The Intramural-Recreational Sports Department will open their new outdoor sports complex this semester. This complex includes fields, space equivalent to 8 football fields, softball fields and various other fields. In addition, the driving range will be open to the university community as well as to the Bryan/College Station community. Finishing touches are being put on the driving range and scheduled to be open in the next few weeks.

Salt Water Wade Fishing Trip

This is planned for September 19-21 on the Upper Texas Coast. Fishing areas include West Galveston Bay, San Luis Pass, Seaward Side - North Jetty, Pelican Island, Gulf Coast Fishing Pier, etc. Sign ups for this continue through September 15 in the Intramural-Recreational Sports Office, 159 Read. The \$25.00 fee for this trip includes rental of group camping equipment and life jackets, transportation costs, live fishing bait, and experienced instruction in tactics for catching game fish. A pre-trip meeting is scheduled for Monday, September 15, 7 PM in the Grove. For more information call Patsy at 845-7826 or Chris at 845-4511/693-3776.



MONDAY	TUESDAY	WEDNESDAY	THURSDAY	FRIDAY	SATURDAY	SUNDAY
ENTRIES OPEN: 8	ENTRIES CLOSE: 9	10	11	12	13	14
INDOOR SOCCER TENNIS SINGLES INDOOR SOCCER OFFICIALS MEETING 6pm, 167 READ	FLAG FOOTBALL PRESEASON FLAG FOOTBALL 16" SOFTBALL TABLE TENNIS SINGLES		CAPTAIN'S MEETING: 601 RUDDER 16" SOFTBALL, 6pm 16 RUDDER CORPS FL FOOTBALL 7:30 109 TRIGON	PRESEASON FLAG FOOTBALL BEGINS		