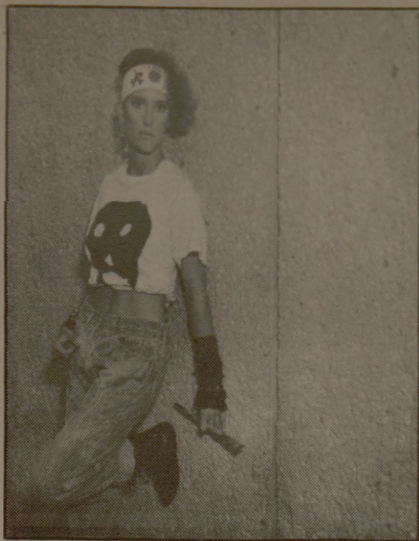
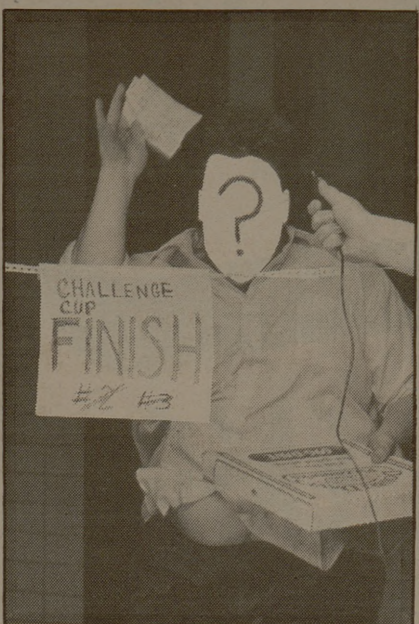


Inside



Late Night



Pizza Race II p.6



Stupid pet tricks p.11

Dear Readers:

These days, David Letterman is the king of late-night comedy, but when *At Ease* had its first Late Night issue last year, he wasn't so hot. We thought he'd be impressed, flattered and little tearful when we sent him a copy of our issue. Obviously, it was lost in the mail because he never put the issue on viewer mail or even stupid pet tricks. But because we still love Letterman and watch him when we're not at the Batt, we're bringing you the second annual Late Night issue. It's our last issue and our last chance to make it on network T.V. Hope you enjoy the Late Night issue, even if David doesn't. Have a nice summer.

Bill and Tricia

KAMU3

National Public Radio is one of the most painless forms of learning around. In one 10-minute segment, you can learn about currency devaluation in Sri Lanka, social mores in Argentina and political infighting in Washington. Jay Blinderman visited KAMU, the listener-supported NPR station at A&M and returned with this report.

Record Review4

Movie Review5

Opinion5

If you thought someone invading your space went out with sprouts, think again. People appear at their best or bizarrest at close quarters. Nancy Feigenbaum explores the strange behavior that passes for normal in elevators, bathrooms, etc.

Pizza Race II6

What Letterman does to the Chinese food delivery business in New York, *At Ease* attempts with pizza. See the return of Domino's, Pizza Hut and defending champ Double Dave's, as they battle it out to make the quickest delivery.

Reader Mail10

Join *At Ease* when we raid the Batt files to find the letters to the editor that never made it to print. Truth is stranger to fiction — we couldn't have made these up.

Stupid pet tricks11

At Ease Staff

- Co-editorsBill Hughes
.....Tricia Parker
- WritersTamara Bell
.....Nancy Feigenbaum
.....Tricia Parker
.....Molly Pepper
- ProductionRandy Marquardt
- PhotographerBill Hughes