

First Visit Special

Styles Forward
Hair Design

FREE Bang Trim

JOICO Products

3400 A. S. College
822-9515 expires 3/8/86

with coupon while appts. last

Chimney Hill Bowling Center

"A Family Recreation Center"

40 Lanes — Automatic Scoring
League & Open Bowling
Bar & Snack Bar

STUDENT SPECIAL MONDAY TO FRIDAY 9 AM to 6 PM
\$1.00 a game student ID required

701 University Dr. East 260-9184

GALLERY NISSAN

10% Student Discount

Discount is on all parts & labor on Nissan Products only. We will also offer 10% discount on labor only on all non-Nissan products.

Student I.D. must be presented at time workorder is written up.

We now have rental units available for service customers

1214 Tx. Ave. 775-1500

The Boot Barn
Quality for Less

"The original discount boot store with true discount prices."

Justin ROPERS \$79⁰⁰

Brown, Grey, Cloud Grey, Cloud Blue, Burgundy, Navy, Taupe, Pink, Red.

Open Monday-Saturday 9:30 a.m.-6 p.m. 2.5 miles East of Brazos Center on FM 1179 (Briarcrest Dr.) 776-2895

Attention all Students, Faculty and Staff

You are eligible for a **10% Discount** on all services at Care Plus.

Services Include:
Family Practice
Womens Health Care
Workers Compensation Injuries
Minor Emergencies at 1/2 price of Emergency Room Cost.

CarePlus MEDICAL CENTER

Open For Your Convenience
8 AM till 8 PM
Every Day of The Year
1712 Southwest Parkway, #105
College Station, TX 77840-4975
696-0683
(No Appointment Needed)

Are you reading this?

This could be an ad for your business

Think about it...

The Battalion
845-2611

What's up
Tuesday

MSC GREAT ISSUES: will present Jerry Levin, a Cable News Network correspondent who was abducted by terrorists, at 7 p.m. in Rudder Auditorium. Admission is \$1.50.

MSC BLACK AWARENESS COMMITTEE: will present a dramatic production by Charles Gilpin Palyers of Prairie View A&M University. Call 845-1515 for details.

PROFESSIONAL ASSOCIATION FOR INDUSTRIAL DISTRIBUTION: Randy Lewis, a partner in Arthur Andersen & Co., will speak on "just-in-time" inventory management. For more information call Duane, 846-0824.

MODERN LANGUAGES DEPARTMENT: Dr. William Siemens, of West Virginia University, will present a program of "The Quest of the Poetic Hero."

SADDLE & SIRLION CLUB: will meet at 5 p.m. in the lounge of Kleberg to go to donate blood, but you can donate on your own from noon to 6 p.m. at Our Savior's Lutheran Church. Call 764-2188 for details.

PEACE CORPS: will meet at 6:30 p.m. in 510 Rudder to show films and have a question and answer session. For more information call Jerry, 845-4722.

PHILOSOPHY CLUB: will meet at 7 p.m. in 302A-B Rudder to discuss "Truth: Can We Know It?" For more information call Louis, 260-1382.

TAMU SCUBA CLUB: will discuss Navy SEAL's and Coast Guard diving at 7 p.m. in 607 Rudder. For more information call Jeff, 696-2163.

SOCIETY OF MANUFACTURING ENGINEERS: B.K. Srinivas will speak on "Machinability & Tool Life" at 7 p.m. in 305 Fermier Hall. For information call Chuck, 846-9102.

FELLOWSHIP OF CHRISTIAN ATHLETES: will meet at 8:30 p.m. in 145 MSC. For more information call Jenda, 260-0846.

CIRCLE K: will meet at 7:15 p.m. in 139 MSC. For more information call Kathy, 260-0086.

TAMU BICYCLING CLUB: will discuss the All Night Fair at 8:30 p.m. in 501 Rudder. For more information call Kevin, 846-5650.

DANCE ARTS SOCIETY: will have body conditioning, 6:30 p.m.; beg. ballet, 7:30 p.m.; inter. ballet, 8:30 p.m.; and pointe, 9:30 p.m. in 268 E. Kyle.

AGGIE CON: will have an officer meeting at 6:30 p.m. in 604A-B Rudder.

CEPHEID VARIABLE: will have an officers' meeting at 7:30 p.m. in 604A-B Rudder.

NATIONAL ORGANIZATION OF WOMEN: will meet at 7 p.m. in 504 Rudder.

TAMU ONE-WHEELERS: will meet in front of G. Rollie White at 5 p.m. to work on the All Night Fair. For more information call Pete, 696-7232.

EL PASO HOMETOWN CLUB: will discuss the All Night Fair at 7 p.m. in 204 Harrington. For more information call Denise, 260-0026.

CO-OP STUDENT ASSOCIATION: Dr. John Adams will speak on interviewing techniques at 7 p.m. in 402 Rudder. For more information call Nicki, 764-7230.

ASIAN-AMERICAN ASSOCIATION: will meet at 7 p.m. in 502 Rudder. For more information call Arthur, 846-4197.

TAMU BAHAI CLUB: will present a discussion on "Thief in the Night" at 7:30 p.m. in 140 MSC.

SADDLE AND SIRLOIN CLUB: judging team and senior pictures will be taken at 5:30 p.m.

4 astronauts speak out on rocket defects

(continued from page 1)

volved the solid rocket boosters.

"Normally we are informed about such safety issues," he said. "It was an oversight that none of us knew about this."

Had he known, Brand said, he would have asked for a briefing. And if he determined that it was not safe to fly, he would have asked that the problem be fixed, he said.

Brand said it was understandable why the Challenger crew was not informed about engineers' concerns over the effects of low temperatures on the solid rocket booster seals.

"The crew should have been aware of it," he said, "but there's a reluctance at the last minute to get the crew involved in engineering controversies."

"As long as I have been here we've had pressure from the schedule."

For the crew, he said, most of the pressure is to get trained in time for the mission.

"We assume that the hardware is marching on down a schedule and when launch day comes it will be ready," Brand said.

All of the astronauts said they would like to see some type of launch escape system whereby astronauts could escape if there was a problem, but they said they did not expect such a system to be developed in the current space shuttle craft.

But Fullerton said he thinks the chances of a launch escape system being established are low.

But he said he was confident that any problems would be fixed and said, "I'd like to be the first guy to take it up again."

All four of the men said the morale in the astronaut corps is high and that the astronauts are eager to fly again.

Fullerton said, "The morale level is not dejection and despair. There's an intense determination to get to the bottom of the problem and to fix it."

"I don't know of anybody who is ready to walk out and leave."

Engle said he felt it would be premature to fault either NASA's launch decision system or any of the judgments that make the system operate.

He said his confidence in the system was not affected, but added he did expect changes in the decision process to be made before shuttles fly again.

OPEN Feb. 20, 1986

BRAZOS VALLEY GOLF DRIVING RANGE

Mon.-Fri. 12-9 p.m.
Sat. 10 a.m.-9 p.m.
Sun. 1 a.m.-8 p.m.

696-1220

East Bypass and Hwy. 30 Service Road Going South 1/4 mile.

SCHULMAN THEATRES

2.50 ADMISSION

- Any show before 3PM
- Tuesday - All Seats
- Mon-Wed Local students with current ID's

DAILY CONCESSION DISCOUNT

*DENOTES DOLBY STEREO

PLAZA 3

226 Southwest Pky 685-56

*PRETTY IN PINK PG-13 7:20-4

*THE COLOR PURPLE PG-13 7:20-4

*OUT OF AFRICA PG 7:20-4

MANOR EAST 3

Manor East Mall 83

*DOWN AND OUT IN BEVERLY HILLS R 7:20-4

YOUNGBLOOD R 7:15-4

*WILDCATS R 7:30-4

SCHULMAN 6

2002 E. 29th 775-94

*PRAY FOR DEATH R 7:30-4

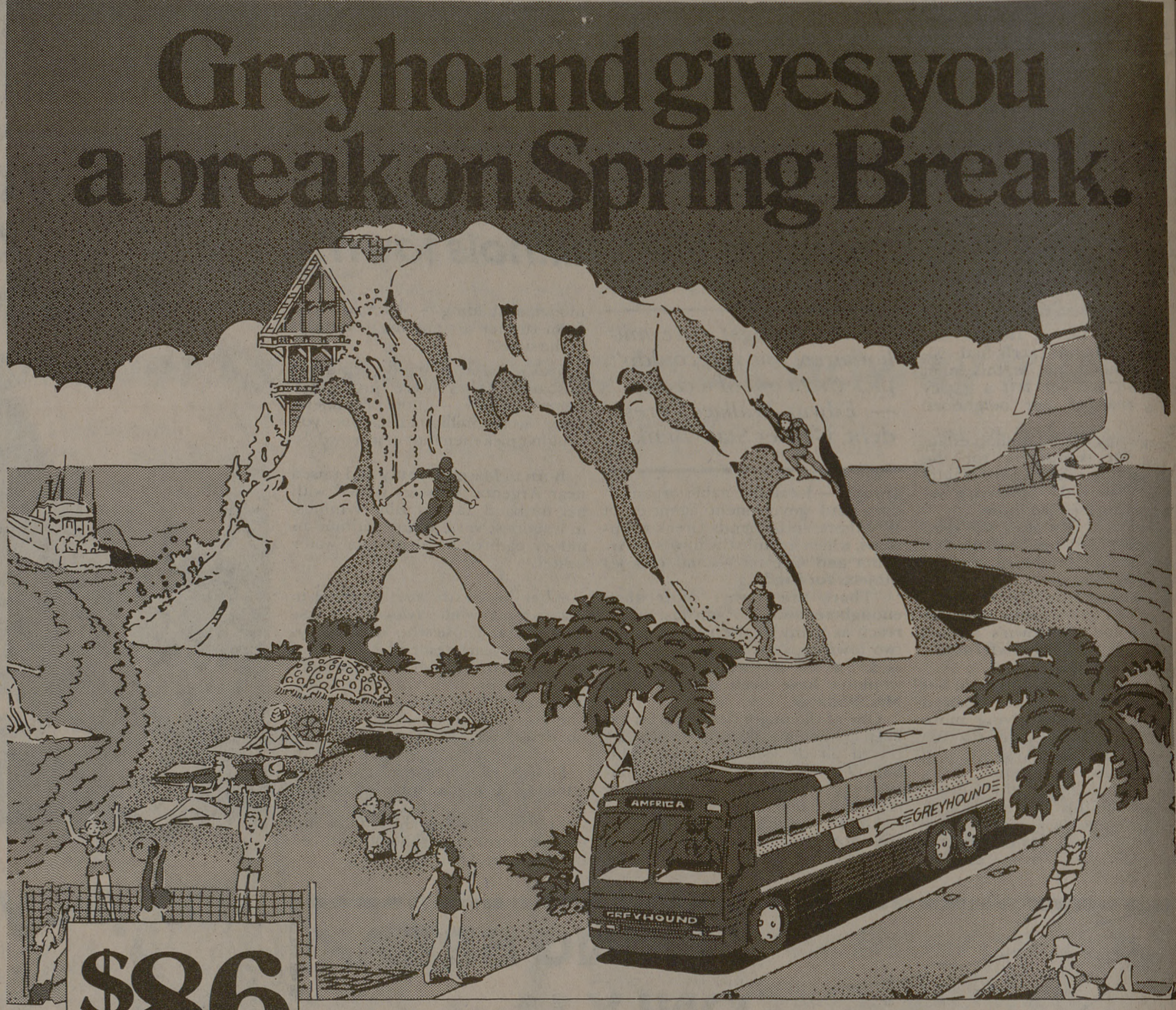
CRY FROM THE MOUNTAIN PG 7:20-4

*DELTA FORCE R 7:15-4

MURPHY'S ROMANCE R 7:20-4

ROCKY IV PG 7:30-4

WITNESS R 7:25-4



\$86 Round trip. Anywhere we go.

This Spring Break, if you and your friends are thinking about heading to the slopes, the beach or just home for a visit, Greyhound® can take you there. For only \$86 or less, round trip. From February 1 through April 30, all you do is show us your college student I.D. card when you purchase your ticket. Your ticket will then be good for travel throughout your Spring Break.

So this Spring Break, get a real break. Go anywhere Greyhound goes for \$86 or less. For more information, call Greyhound.



114 E. Walton Drive, 696-0209