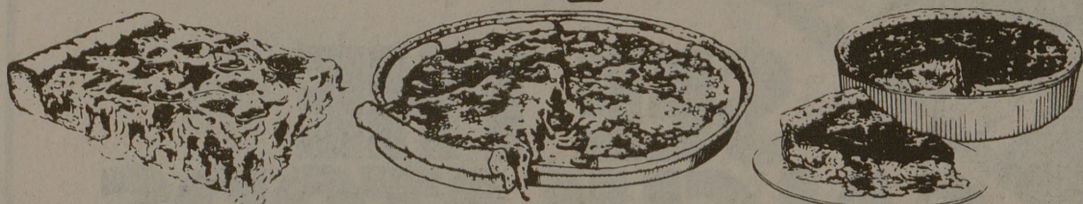


Pizza as Simple as 1-2-3.



1 PIZZA BY THE SLICE

Day or Night
Eat in or take out

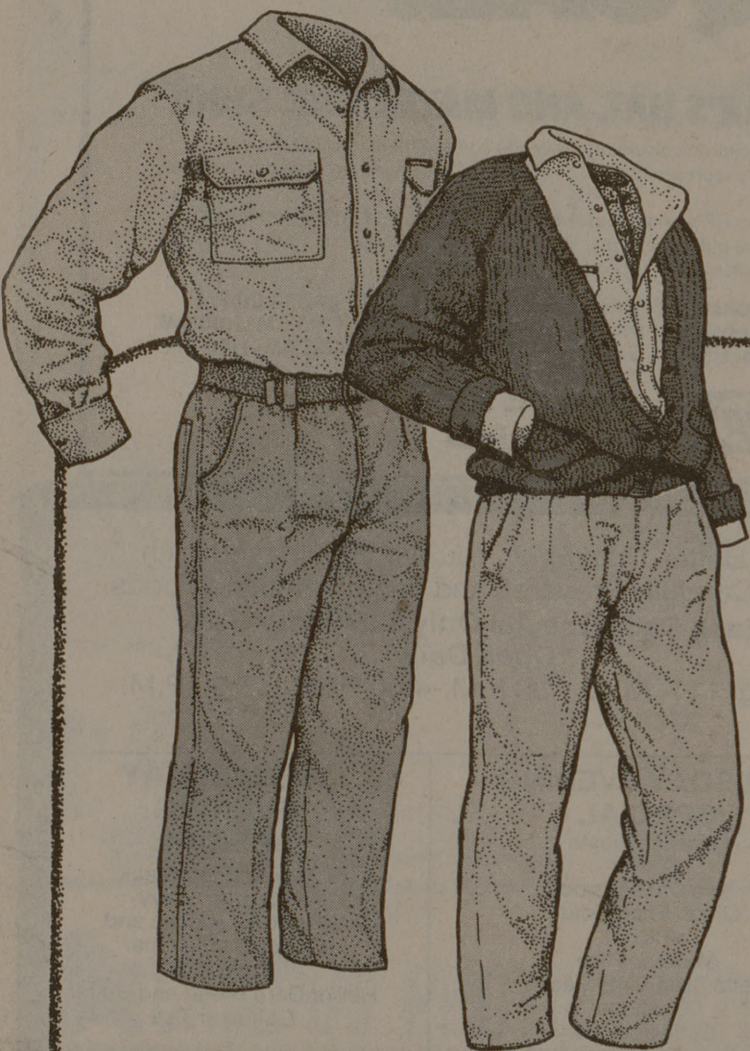
2 PIZZA BY PAN

After 5pm
Eat in or take out

3 STUFFED PIZZA

After 5pm
Eat in or take out

Flying Tomato
PIZZA BY PAN
303 W. UNIVERSITY • 846-1616



Royal Robbins

With thirty years of mountaineering experience, Royal and Liz Robbins design clothing with a simple philosophy of products true to their own feelings for the outdoor life. Royal Robbins styles have the timeless classic look of honest, reliable, comfortable clothing for all seasons.

Men's: All 100% cotton washed herringbone mountain shirt, Billy Goat canvas pant and web belt.

Women's: Crinkle canvas shirt, Wallace Beery jersey, washed drill pant and web belt—all 100% cotton. Ramie/cotton cardigan for men and women.

Whole Earth Provision Co.

105 Boyett College Station 846-8794

Office tower, lab facilities next north campus addition

By ED CASSAVOY
Staff Writer

The rumble of construction equipment continues unabated on the Texas A&M campus. One such project now under construction is the Civil Engineering/Texas Transportation Institute/Engineering Design Graphics Complex.

The long name of the new facility mirrors the equally large cost of building the complex — \$14,776,000, says Dan White, assistant director of the Facilities Planning and Construction Department.

The 3DI architect firm of Houston has drawn the plans for an eight-story tower and a four-story lab building connected to the tower with a walk way bridge, White says.

He says the H.B. Zachry construction company is handling the actual building of the complex. The planned completion date for the complex is Sept. 1987.

Charles R. Caffee, a project manager for planning facilities, says there are four tenants planning to move into the new complex, located on Spence Street across from the new Engineering/Physics building — TTI, the Food Services Department, the Civil Engineering Department and the Engineering Design Graphics Department.

"The TTI (Texas Transportation Institute) is moving out of the Blocker Building — mostly their administrative offices are moving to the complex," Caffee says. "Food Services is opening a fast food-type operation, with a dining area."

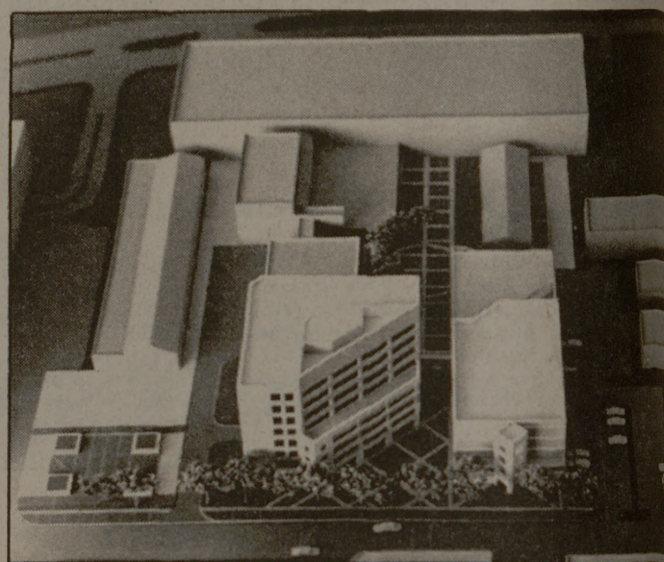
"The problem was that they (Food Services) didn't have any food services in this part (the north side) of the campus."

The Food Services Department contributed \$1,105,000 for the construction of the cafeteria, White says.

Caffee says the eight-story tower will house the Food Services cafeteria on the first floor. Civil engineering offices will occupy the second floor, with the remaining floors filled by the TTI offices, he says.

The adjoining four-story building will house laboratory facilities for civil engineering (first two floors) and the engineering design graphics labs, Caffee says. The two buildings will be connected by a covered "bridge" similar to the one used to connect the new Engineering/Physics Building.

"The tower will look pretty nice," Caffee says, "and it will be very simi-



Model of the \$14,776,000 Civil Engineering/Texas Transportation Institute/Engineering Design Graphics Complex.

lar in design to the new Engineering/Physics Building. It will be quite imposing."

Caffee says the new laboratories will supplement the existing engineering labs already in use. He also says the Engineering Design Graphics Department has been consolidated into the Civil Engineering Department and will move its entire operation into the new complex.

Caffee says the four-story building will house both research and teaching labs for the combined department.

"The total plan was to help in the circulation between the different buildings in that area," Caffee says. "The students and faculty will be able to go a long way on the second floors (of the different buildings)."

He says the tower will also be linked by a walk-way bridge to the McNew Engineering Lab located directly behind the tower.

One factor that contributed to the two-building design of the CE/TTI complex was the handling of the electrical systems located in the construction area, Caffee says.

"Basically a main electrical duct line runs right between the two buildings (under the connecting bridge)," Caffee says, "and with all the lines in the area it just made more sense doing it this way."

Caffee says the building of the CE/TTI complex won't affect the parking situation in the area, be-

cause few if any existing parking places will disappear once the complex is completed.

He says long-range parking on the north side of the campus for the moving of the Physical operations — currently housed in a long one-story building facing University Drive — and the construction of a multi-level parking garage, the site, but Caffee emphasizes, these plans were still on the drawing board.

Caffee says TTI and the Engineering Department were "good neighbors" in the complex because both programs worked closely with each other on a number of projects.

Sid Sanford, assistant director of TTI, agreed that the two departments would be working closely each other.

"We have a number of joint engineering projects with the CE Department," Sanford says. "Primarily are moving because we're out of room (in the Blocker Building)."

"It just seemed more logical (the College of) Business Administration — which is growing — to expand in this building."

Sanford says TTI officials estimate it will take 2½ years for completion and the move into the complex.

Caffee says excavation of the office tower basement would be soon.

Court rejects appeals, upholds death sentences in three cases

Associated Press

AUSTIN — A trio of death sentences were upheld Wednesday by the Texas Court of Criminal Appeals, including the conviction of a Houston man who a witness said later laughed about the crime.

In that case, the judges rejected the appeal of Lawrence Lee Buxton, convicted of shooting Joel Slotnik in the neck as he held his 5-year-old son during a grocery store robbery.

The court also affirmed the conviction of a Bexar County man for the beating and stabbing of a man during a 1979 robbery in which the victim's date was repeatedly raped,

and of a man given the death penalty in the stabbing of a Corpus Christi tavern owner.

Buxton was convicted in the Sept. 19, 1980, shooting of Slotnik, who died four days later.

The shooting occurred as the Slotniks and a second family were returning home from Yom Kippur services and stopped at the grocery.

Slotnik, his son Aaron and a woman entered the store, stumbling upon a robbery in progress. Three masked men, two brandishing guns, ordered them to "hit the deck."

As a store employee handed over cash, one gunman turned to Slotnik,

who was seated on the floor with his son, who was standing.

"You better get that kid off the gunman said. He then fired his pistol, hitting Slotnik in the neck."

As the robbers left the store, the man who fired the shot pulled his ski mask. Two witnesses identified that man as Buxton.

Court records said Buxton cussed the crime about four months later with John Larry Foster, testified that Buxton said he was man during a robbery and used caliber bullets because they "hard to be traced." Foster said he laughed about the incident.



LORDS AND LADIES: Experience the 11th Annual Texas Renaissance Festival. Held from 9:00AM 'til dark on its site in the beautiful wooded area north of Houston, and west of Conroe, Texas, the Festival will transport you back to the 16th Century for a day of fun and frolic. See jousting knights, buxom wenches, the Royal Falconer, wandering minstrels, comic and Shakespearean players, Robin Hood's Merry Men and much more... Try your luck at one of the games: Skittles, Bocce Ball, Jacob's Ladder, Fencing, Archery and more... Gorge yourself with a Giant Turkey Leg and a tankard of beer. A Gyro Sandwich, Empanada, Fried Cheese, Pizza Napoli, Appyle Dumpling and more.

From Houston: Take I-45 North, turn left on 105, turn left on 1774 at Plantersville and drive 6 miles to Site. **NO PETS PLEASE.**



COPYRIGHT 1984 Texas Renaissance Festival Illustrations © Real Mustang

...Examine the best wares created by fine craftsmen and artists from throughout the land... Take in the races at the Newmarket Race Track and watch as glassblowers and blacksmiths demonstrate their skills...

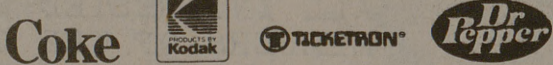
Tickets are \$12 (adults) and \$6 (children 5-12) at the gate. Children under 5 admitted free. Prices include entertainment, free parking, plus all events at Newmarket Race Track and Arena. **DISCOUNT TICKETS AVAILABLE AT ALL PARTICIPATING SAFEWAY STORES.**

Celebrate the 11th Anniversary at the new Import Beer Gardens! And indulge dining and entertainment fantasies by joining in the **KING'S FEAST.** (Call (713) 356-3002 for Feast details & reservations.)

Texas Renaissance Festival, Route 2, Box 650, Plantersville, TX 77363. Or call (713) 356-2178 for more information.



Tickets Available at Campus Ticket Office



A new Aggie tradition for serious ice cream lovers.

Imagine, ice cream that's made fresh each day! Then imagine choosing any combination of fresh fruit or candy and having it all blended together. We call them "Blend-Ins". And they're a new tradition in Aggieland!

Amaretto and coconut. Chocolate mousse with Heath Bars. Or M&M's. Or Reeses Pieces. Fresh cream with ripe, delicious strawberries. Or bananas...the combinations are endless!

We're making serious ice cream. And you'll have to make a serious decision - what flavor do I try first?

"Do yourself, and a friend, a flavor..."

Thomas Sweet
ICE CREAM & CHOCOLATE

25% Off Blend-Ins

With this coupon through September 30, 1985. Limit 2 Blend-Ins™ per coupon. Not good with any other offer.



Kyle South (behind J.J. Muggs) • College Station 764-9044 • 7 days a week 11 am - 11 pm