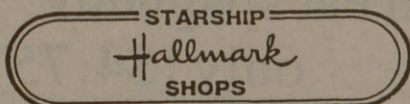
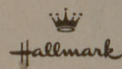
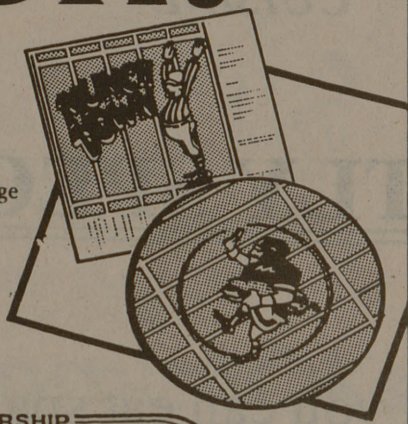


Sports

RECIPE FOR FOOTBALL FUN!

First, send Hallmark invitations to friends.
Add ingredients:
 60 ham sandwiches
 4 pounds of pretzels
 5 gallons of your favorite beverage
 1 football game
 Mix thoroughly. Serve on colorful, convenient Hallmark paper partyware. Enjoy!



Manor East Mall, Bryan 822-2092
 Cullen Plaza, College Station 693-3002 © 1985 Hallmark Cards, Inc.

ELECTRICAL ENGINEERS

Rohm and Haas Texas Inc.
 interviews on campus October 3.

Rohm and Haas Company is a major manufacturer of specialty chemicals used in industry and agriculture. Our operations are international in scope and our business activities are highly technical in nature with over 2,500 products sold to customers in a wide array of industries.

Rohm and Haas will be on campus October 3 to interview Electrical Engineers graduating in December or May for openings at our Houston manufacturing facility.

Electrical Engineers are employed in two primary areas in our Houston facility:

Electrical Power Engineers are responsible for electrical projects from initial concept through final installation and start-up. They are involved with the design, acquisition, and construction of plant electrical facilities including substations, power and lighting systems, equipment control systems, programmable controllers, and motor control centers.

Instrument Engineers are involved with the design, acquisition and construction of plant process variable measurement and control systems, including computer-based controls and programmable controllers. Their work includes design and specification of facilities, cost estimating, justification and appropriation of capital funds, field construction supervision, and start-up of the facilities.

If you're the kind of person who can take the initiative, work independently, and is capable of assuming increasing responsibility, we would like to talk with you.

Sign up now at the Placement Office for an interview on October 3 with Ray Stivers of Rohm and Haas Texas Inc.

An Equal Opportunity Employer M/F.



Texas Aggie BOOK store



TEXAS INSTRUMENTS

		reg.	SALE
TI 55-II	reg. \$45.00	\$45.00	\$35.95
TI 55-III	reg. \$50.00	\$50.00	\$39.95
TI BA-II	reg. \$45.00	\$45.00	\$35.95
TI 35-II	reg. \$23.95	\$23.95	\$19.50
TI 30-III	reg. \$15.95	\$15.95	\$12.95

Correction from 9-16:



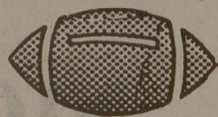
HEWLETT PACKARD

SALE

HP 41 CX	reg. \$325.00	\$249.95
HP 41 CV	reg. \$225.00	\$179.95
HP 11 C	reg. \$75.00	\$59.95
HP 12 C	reg. \$120.00	\$95.95
HP 15 C	reg. \$120.00	\$95.95
HP 16 C	reg. \$120.00	\$95.95

327 University Drive
 at Northgate

Football Forecast



Northeast Louisiana at Texas A&M	Ags by 18
Rice at Air Force	Falcons by 20
TCU at Kansas St.	Frogs by 28
North Texas St. at Texas Tech	Red Raiders by 7
Baylor at (3) USC	Trojans by 21
Washington at Houston	Huskies by 9
Missouri at Texas	'Horns by 17
(20) Illinois at (18) Nebraska	'Huskers by 6
Georgia at Clemson	Tigers by 3
(19) Michigan at (15) S. Carolina	Wolverines by 2
Houston at Pittsburgh	Steelers by 6
Cleveland at Dallas	Pokes by 13
Last Week's Record	8-3-1
Overall Record	8-3-1



Travis Tingle
Sports Editor



Charean Williams
Asst. Sports Editor



Doug Hall
Sports Writer



Ken Sury
Sports Writer



Pete Herndon
Sports Writer



d.p.

Crow knows NLU football well A&M Heisman Trophy winner coached Indians

By KEN SURY
 Sports Writer

Saturday's Texas A&M-Northeast Louisiana football game could be billed as "Godzilla meets the smurfs," but A&M Associate Athletic Director John David Crow said the Aggies had better be prepared for the Indians.

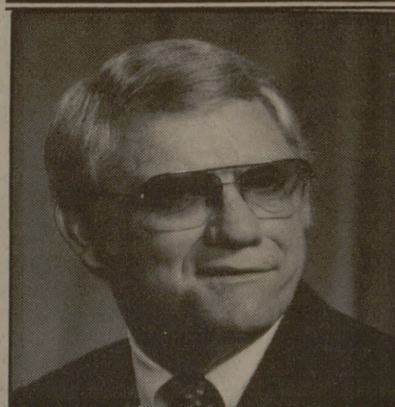
Crow, who won the Heisman Trophy at A&M in 1957, knows NLU well.

Crow was head football coach and athletic director for the Indians from 1976-80. In fact, he said, he was at NLU when the game with A&M was verbally committed.

However, he said, if he was still athletic director and head football coach at NLU, "I'm not real sure that I would have wanted to come down here (to College Station) and play a team the size of A&M, because we (A&M) are going to be an awful lot larger than Northeast (Louisiana), and rightfully so, because we're in Division I-A and they're in Division I-AA."

This means the biggest plus for A&M might be the intimidation of "Aggie-filled" bleachers in Kyle Field.

The largest crowd NLU has



John David Crow

played in front of was 47,331 in its 1980 season-opener against Iowa State. When the Indians play at home in Monroe, La., Malone Stadium holds a capacity crowd of 23,227.

But while a partisan Aggie crowd will certainly be a factor in Saturday's game, Crow doesn't think it will be enough to handicap the Indians' performance.

So if Crow is right, then just because A&M's a bigger school, doesn't

"Those kids at Northeast (Louisiana) are going to play hard, I mean they're going to play hard. That's how they made it through life and participating in athletics."

— A&M Associate Athletic Director John David Crow

mean A&M automatically will play better than NLU.

"I would like to make sure that everyone understands that although we're supposed to beat them (NLU), and we should beat them, it's not going to be a cakewalk," Crow said.

"I've been in that league (the Southland Conference of which NLU is a member), and I've coached in that league for five years, and so I know that they have some players there that are capable of making

some big plays and doing some things.

"We're going to have to 'put away' so to speak, when we get a chance, or it's going to be a dog out there. I hope our players realize that. I know (A&M Head Coach) Jackie Sherrill and the coaches realize that."

"Those kids at Northeast (Louisiana) are going to play hard, I mean they're going to play hard. That's how they made it through life, participating in athletics, because they don't have the size and ability most of the players in the league (Division I-A)."

But by no means is Crow implying that NLU is a second-rate university. "It's really a fine institution," said.

Crow said NLU President Dwight Vines is still a close friend, and he'll never forget his time in Monroe.

"I really enjoyed the five years that I was there," Crow said. "I like we got some things done, and there was a better program, better the athletic department. So I'm real proud to see them do it."

See Crow, page 12

Aztecs get revenge on Aggie spikers

By CHAREAN WILLIAMS
 Assistant Sports Editor

SAN DIEGO — The San Diego State volleyball team got what it wanted Thursday night — revenge.

SDSU won a hard-fought match with Texas A&M, 15-10, 17-15, 15-8 in the first round of the Michelob Light Aztec Classic.

Last year, the Aggies upset a then No. 8 ranked Aztecs in G. Rollie White Coliseum.

The No. 15 Aggies, now 4-2 overall, jumped to a quick 5-1 lead over the 10th-ranked Aztecs in the first game of the match, behind the serving of outside hitter Stacey Gildner.

But, the bombing serves, blocking and spiking of Aztec middle blocker Renee Pankopf did A&M in all night long.

Pankopf had 27 total attacks and only three errors for an outstanding hitting percentage of .407.

In the second game, it was more of the same.

A&M led 11-2, before being outscored by SDSU 10-1 to tie the game at 12-12.

The Ags were able to fend off six game points before finally succumbing to the Aztecs, who upped their record to 8-2.

In the third game it was all Pankopf and SDSU.

The Aztecs had as large a lead as 11-2 before A&M began a comeback. A&M got to within 14-8, but never got any closer as SDSU beat them away, 15-8.

"We were very tentative tonight," A&M assistant coach Mardi Alexander said. "We'll have to play a lot better tomorrow and be a lot more aggressive."

A&M's highest hitting percentage was .023 in the second game, while the Aztecs hit .480, .205 and .194 to dominate the Aggies.

While Pankopf was the big gun for SDSU, the whole Aztec team played well.

Aztec middle blocker Kris Martin, a 6-foot-3 freshman, hit 454 and blocked the Aggies left and right. Martin led the Aztecs with nine blocks the night.

For the Aggies, no one player really stood out.

Aggie All-American Sherri Brinkman finished with 10 kills for a .300 hitting percentage. But overall, the Aggies hit minus .001 and had only one block during the entire match, compared to the Aztecs' 30.

A&M must now win both scheduled games Friday to remain in the SDSU tournament.

CONTACT LENSES

\$79⁰⁰ pr.* - daily wear soft lenses

\$99⁰⁰ pr.* - extended wear soft lenses

\$119⁰⁰ pr.* - tinted soft lenses

CALL 696-3754
 FOR APPOINTMENT



OPEN MONDAY THRU SATURDAY

CHARLES C. SCHROEPEL, O.D., P.C.

DOCTOR OF OPTOMETRY

707 SOUTH TEXAS AVE. SUITE 101D
 COLLEGE STATION, TEXAS 77840

1 block South of Texas & University Dr.

* EYE EXAM AND CARE KIT NOT INCLUDED

WE'VE MOVED!

Our Shiloh Place store has moved!

Please visit us at our new

BRYAN LOCATION:

4301 Carter Creek

(corner 29th St.)



SCRIPTURE
 HAVEN, Inc.

CHRISTIAN
 SUPPLY

Bryan Store
 846-0788

Post Oak Mall
 764-1069