

WE BUY BOOKS EVERY DAY!
 And remember we give 20% more in trade for used books.
LOUPOT'S BOOKSTORE
 Northgate - Across from the Post Office

Publications

Research publications, by nature, are intended to be informative, practical and predictable. The new movement in publishing is to make the printed pieces aesthetically and inspiring as well as informative.

Lang Printing, Incorporated is equipped to handle 4-color magazine, book, and brochure formats. We can design, print and deliver a product with an impact.



Lang Printing, Incorporated
 209 W. Carson
 Bryan, Texas 77801
 409 / 779-7221

Graphic Design • Typography • Camera • Printing • Bindery

-For Your Convenience-

You can pick-up your Cable TV equipment in the

MSC

Monday June 3rd * Tuesday June 4th * Wednesday June 5th

from
 8 a.m.-5 p.m.

McCaw Cablevision ©

SHOE



by Jeff MacNelly

Shuttle crew to aid study of black holes

Associated Press

CAPE GANAVERAL, Fla. — A satellite experiment aboard the space shuttle flight will examine what may be a black hole lurking at the center of our Milky Way galaxy, devouring stars, cosmic dust and gas at a rapid rate.

Ray Cruddace, project scientist for the Spartan 1 satellite, says the center of the Milky Way is tightly packed with stars and seems associated with some violent action. "We want to clarify the structure and behavior of this area. Our studies may provide clues to cosmic evolution."

Astronomers have suspected several years that a black hole might be the source of intense radiation emanating from the galactic center.

They believe black holes are created when a massive star or galaxy exhausts its nuclear fuel and suddenly collapses into an object so densely and tightly packed its gravity prevents even light from escaping.

A black hole could be so dark and dense that even if it were the size of a sugar cube, it could weigh 1 billion tons. The gravitational pull of the objects may be strong enough to pull in nearby stars, gas and dust at enormous speeds.

As this galactic material swirls into the hole, it forms a huge disc that heats up and begins radiating energy.

Spartan 1, which could aid the effort, will be released from Discovery after its June 17 launch. Discover's robot arm will drop Spartan 1 into orbit during the fourth day of the mission. It will drift about 100 miles away, and on Day 6 shuttle commander Ray Brandenstein will transfer the satellite, so it can be turned to Earth and used again on later flight.

Recent findings indicate black holes are in the centers of two other galaxies, and if the Milky Way also turns out to be one, it would support a theory that these objects are scattered throughout the universe.

Group not sure nuclear tests caused cancer in soldiers

Associated Press

WASHINGTON — Soldiers and sailors exposed to radiation at two U.S. atomic test sites in the 1950s are showing higher-than-normal death rates from certain cancers, the National Research Council reported Monday.

However, authors of the council's study also said the excess deaths may have resulted from chance since no similar results are being found at other test sites.

The project, studying death certificates of about 5,000 deceased veterans who were among 46,000 witnesses at five separate nuclear test series, confirmed the findings of a 1980 Centers for Disease Control study that said there was an excess incidence of leukemia among veterans who had participated at test shot

"Smoky" at the Nevada Test Site in 1957.

They also said the "Smoky" results must be considered along with findings of no excess leukemia among witnesses at four other test series in Nevada and the Pacific.

The subject has led to disputes between veterans and the government over possible federal responsibility for cancers now developing among participants in above-ground tests in the 1950s.

Gloria Christopher, executive director of the National Association of Atomic Veterans, dismissed the new study chiefly because it compares health problems of the atomic veterans with those of men in the general population rather than with 1950s veterans who weren't exposed to radiation.

The study, itself, pointed out this weakness but said that finding a scientifically comparable control group would have delayed the study by at least three years.

Christopher said the real problems was an unwillingness to accept responsibility for medically treating unknown numbers of atomic veterans or to admit having knowingly subjected them to radiation risk.

The Centers for Disease Control study had indicated that nine of more than 3,000 witnesses to the "Smoky" test had died of leukemia compared with the 3.5 deaths expected in the general population without unusual radiation exposure.

Although the new study came up with similar figures, it said the radiation the witnesses were supposed to have received should not have caused the increased deaths.

Israelis seize 40 men in raid in Lebanon

Associated Press

BEIRUT, Lebanon — Israeli soldiers raided a Shiite Moslem village in south Lebanon on Monday and seized 40 men in what was seen as a warning to Shiite militiamen operating in the south.

A new round of fighting started in Beirut, where Shiite forces launched new attacks on Palestinians in the capital's refugee camp. Police said eight people were killed and 31

wounded in clashes around the camps, raising the number of casualties since May 19 to at least 510 killed and 2,094 wounded.

Israeli troops swept through Majdal Salim, a village six miles west of the Israeli border. The village is in the zone policed by United Nations peacekeepers, and U.N. spokesman Timur Goksel reported that the Israelis took 40 men from the village.

Israeli forces are due to complete

their withdrawal from Lebanon in the next few days and the raid was considered a clear warning that Israel would not tolerate Shiite attacks on the South Lebanon Army.

The South Lebanon Army or SLA is supported by Israel but is opposed in the zone along the border. Israel plans to hand over security in the border zone to the SLA.

Goksel said SLA troops accompanied the Israelis on the raid.



McDONALD'S INTRAMURAL HIGHLIGHTS



At University Drive At Texas and S.W. Parkway At Manor East Mall At 2930 E. Highway 21

FITNESS CLASSES AND GOLF LEAGUES

The Intramural-Recreational Sports Department is offering aerobic exercise classes and golf leagues throughout the two summer sessions. All classes are designed to meet the fitness needs of both men and women. The classes are open to all faculty, staff, students and spouses at Texas A&M that have a current ID, validated faculty ID or recreational ID. Registration will be held until Friday, June 7 in 159 Read Bldg. (East Kyle). Registrations will be accepted on until the classes are full. For more information on class times and fees call the Intramural-Recreational Sports Office at 845-7826.

SUMMER HOURS FOR RECREATIONAL FACILITIES

READ BLDG. (EAST KYLE)

Monday-Friday
 6:00 a.m.-8:00 a.m.
 Noon-1:00 p.m.
 5:00 p.m.-11:00 p.m.
 Saturday-Sunday
 8:00 a.m.-10:00 p.m.

DEWARE FIELDHOUSE

Monday-Friday
 Noon-7:00 p.m.
 Saturday-Sunday
 8:00 a.m.-10:00 p.m.

WEIGHTROOM

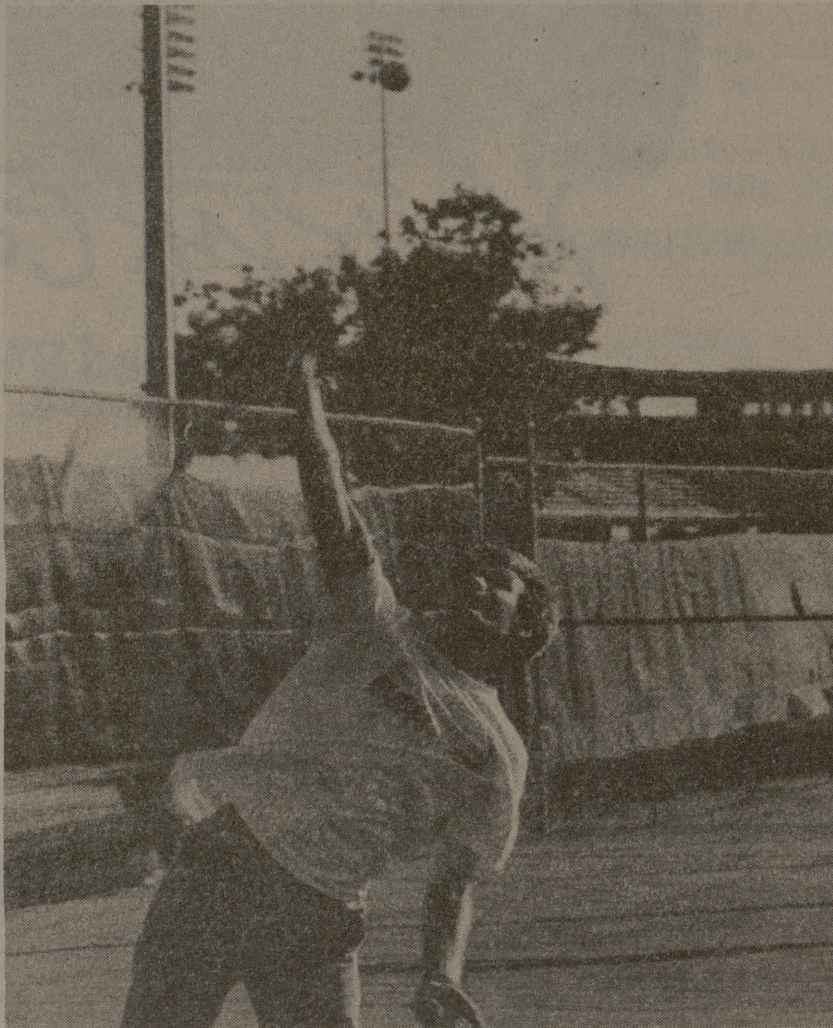
Monday-Friday-11:00 a.m.-10:00 p.m.
 Saturday-Sunday
 11:00 a.m.-6:00 p.m.

TENNIS COURTS

Monday-Friday
 5:00 p.m.-10:00 p.m.
 Saturday-Sunday
 1:00 p.m.-10:00 p.m.

* Reservations may be made by calling 845-2624.

WOFFORD-CAIN POOL
 Monday-Sunday
 Noon-5:30 p.m.
 7:00 p.m.-9:00 p.m.



IMPORTANT NUMBERS

•IM—Rec Sports Office: 845-7826
 •Racquetball Reservations: 845-2624
 •Rainout Information: 845-2625

SUMMER SESSION I INTRAMURAL SCHEDULE

The following intramural activities will be offered for the first summer session. Entries will be taken in the Intramural Office, Room 159 Read Bldg. (East Kyle). Divisions offered will be A, B, C, and D (Recreation). All currently enrolled students and faculty/staff and spouses with a recreational ID are eligible to participate.

SPORT	OPEN	CLOSES	SEE
Slowpitch Softball	June 4	June 7	\$25
Volleyball Triples	June 4	June 7	\$15
Basketball Triples	June 4	June 7	\$15
Tennis Singles	June 4	June 7	None
Handball Singles	June 4	June 7	None
Racquetball Doubles	June 4	June 7	None
Golf Singles	June 4	June 7	Green Fees

For more information on any intramural activity call 845-7826.

RECREATIONAL AND POOL PASSES

Passes for the recreational facilities and the pool are available in the Intramural Office, 159 Read Bldg (East Kyle). Recreational passes are \$5 for the faculty and staff and \$10 for spouses and dependents. Locker and clothing service is available at an additional cost.

Pool passes are also available in the Intramural Office. These passes may be bought in addition to the recreational pass. A pool pass costs an individual faculty or staff member \$30 for the summer, a faculty/staff family \$45 for the summer and a student family \$30 for the summer. Rates are also available for individual summer sessions.

ACKNOWLEDGEMENTS

McDonald's Intramural Highlights is sponsored each Monday in The Battalion by your local McDonald's Restaurants at University Drive, Manor East Mall and on Texas Avenue. Stories are written by members of the Intramural staff, graphics are by Joel Hickerson and photos are by Tom McDonnell and Marcy Basile.