

**WORLD AND NATION**

**Funky Winkerbean**

by Tom Batiuk



**Discovery**

*Shuttle blast off to ignite busy month*

Associated Press

CAPE CANAVERAL, Fla. — The space shuttle Discovery, with Sen. Jake Garn, R-Utah, in the crew as a congressional observer, is set to lift off Friday beginning the busiest month of the shuttle era.

The launch is to be followed Saturday by the arrival here of Atlantis, the fourth and newest shuttle, carried from California atop a Boeing 747 jetliner. Two days later, the shuttle Challenger will roll to the launch pad.

Discovery is to fly a five-day mission and land here on April 17. Twelve days later, on April 29, Challenger is to blaze into space for a seven-day journey with a European-built space laboratory.

The National Aeronautics and Space Administration hopes to achieve this tight schedule without a hitch, to move toward its long-sought goal of launching at least one shuttle a month.

On Friday, NASA released a revised shuttle launch schedule which lists 41 flights through 1987. That

**The National Aeronautics and Space Administration hopes to achieve Discovery's tight schedule without a hitch, to move toward its long-sought goal of launching at least one shuttle a month.**

includes nine more flights this year, 15 in 1986 and 17 in 1987.

The addition of Atlantis to the fleet and Columbia's return to flight status this summer after a long overhaul, plus two new shuttle launch pads, will enable the agency to meet the accelerated schedule. By early next year, a second pad will be ready here and another will be completed at Vandenberg Air Force Base, Calif.

But NASA's best laid plans often get waylaid. Garn's flight, which has

been postponed five times, is a good example.

The flight originally was set for Feb. 20 aboard Challenger, but was delayed three times by thermal tile difficulties and other technical problems and then was canceled when one satellite in the cargo bay developed a serious problem. To save time, NASA combined features of that mission with Discovery's next mission and assigned the flight to Discovery.

The revised mission was scheduled for launch March 28, but had to be delayed two weeks after a work platform fell, breaking a workman's leg and gashing one of Discovery's cargo bay doors in two places.

Six of the seven members of the Garn crew, commanded by astronaut Karol Bobko, were named to fly the mission.

The other crew members are pilot Donald Williams and mission specialists Margaret Rhea Seddon, David Griggs, Charles Walker and Jeffrey Hoffman.

**Picking jury begins in retrial of von Bulow in murder case**

Associated Press

PROVIDENCE, R.I. — A smiling Claus von Bulow waded silently through a sea of shouting reporters outside a courtroom Monday and then was introduced to about 120 potential jurors for his retrial on charges of twice trying to kill his multimillionaire wife.

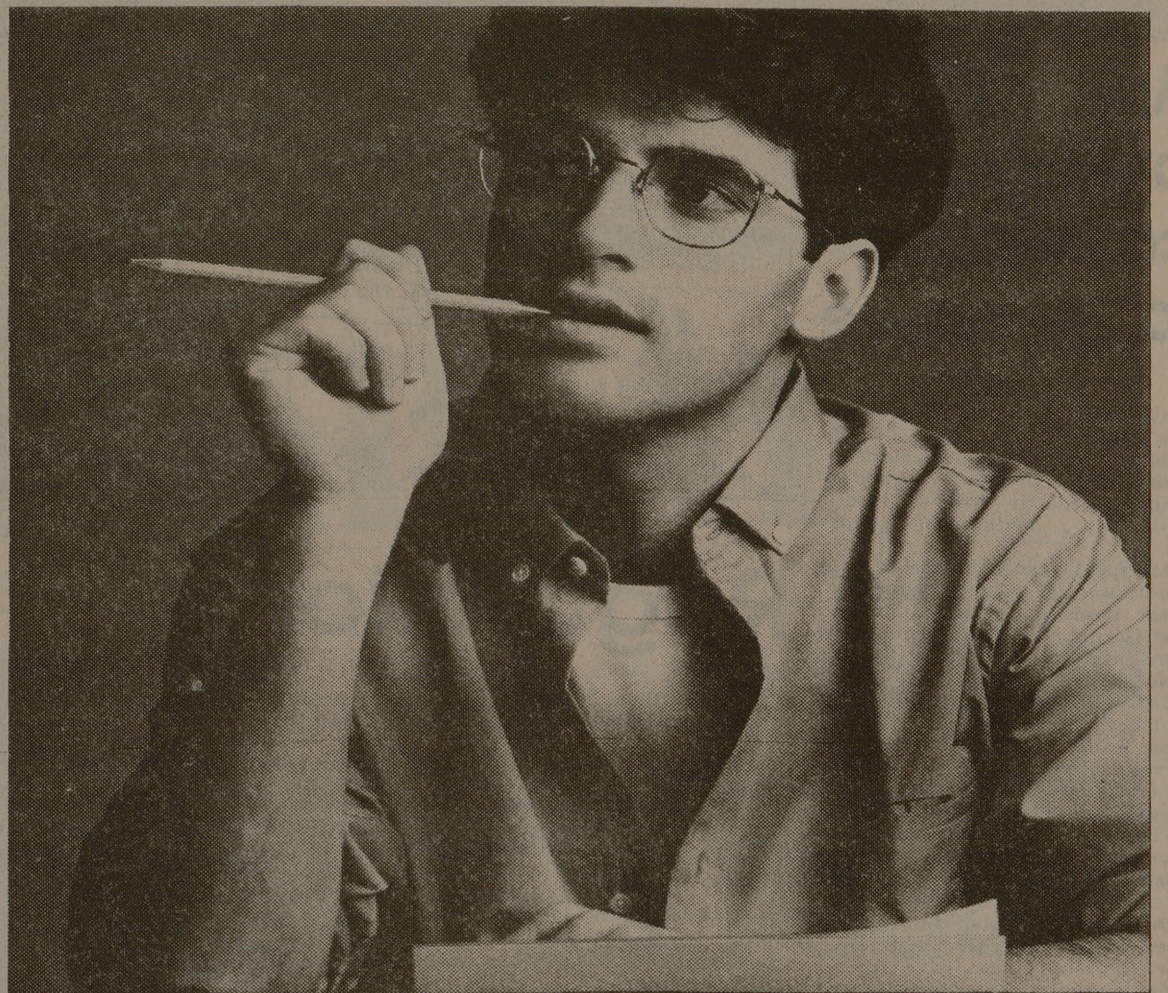
Von Bulow, a Danish-born financial consultant, was found guilty in

1982 of trying to kill Martha "Sunny" von Bulow by injecting her with insulin in the couple's Newport mansion in 1979 and 1980. Mrs. von Bulow, a 53-year-old heiress to a Pittsburgh utilities fortune, has been in an irreversible coma since December 1980.

He was sentenced to 30 years in prison, but remained free on appeal.

Last year the state Supreme Court overturned the conviction, saying von Bulow's constitutional rights were violated because search warrants were not obtained before testing was done on drugs and drug paraphernalia allegedly found locked in his closet.

Picking 16 jurors from the pool of 250 is expected to take two weeks.



**EVEN BEFORE FINALS, YOU COULD FINALLY GET THE AMERICAN EXPRESS CARD.**

If you've been wanting the American Express® Card for some time, this is some time to apply. Because if you're a senior, all you need is to accept a \$10,000 career-oriented job.

That's it. No strings. No gimmicks. (And even if you don't have a job right now, don't worry. This offer is still good for 12 months after you graduate.) Why is American Express making the Card a little easier for seniors to get?

Well, to put it simply, we believe in your future. And this is a good time to show it—for we

can help in a lot of ways as you graduate. The Card can help you be ready for business. It's a must for travel to meetings and entertaining. And to entertain yourself, you can use it to buy a new wardrobe for work or a new stereo.

The Card can also help you establish your credit history, which can help in your future.

So call 1-800-528-4800 and ask to have a Special Student Application sent to you. Or look for one on campus. The American Express® Card. Don't leave school without it.™



© 1985 American Express Travel Related Services Company, Inc.

**Hurry! Great selection of new apartments for limited time only.**

**IT'S A JUNGLE OUT THERE.**



It's easy to lose your way when hunting for a new apartment. Now, Treehouse Village is helping to make your choice a little clearer by offering you new efficiency and one- and two-bedroom furnished and unfurnished apartments with a wild assortment of extras. Just a few blocks from campus, Treehouse Village features the popular two-

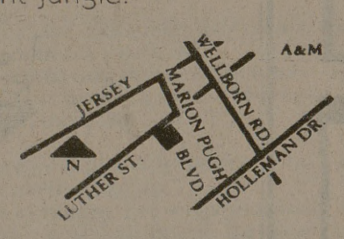
bedroom roommate floor plan, two swimming pools and hot tubs, jogging trail and tennis, basketball and volleyball courts. Some handicap units available, too. So come in from the jungle and settle into a comfortable new apartment at Treehouse Village. Your haven in the apartment jungle.



**TREEHOUSE VILLAGE APARTMENTS**

**LEASE NOW FOR FALL 1985.**

Treehouse Village Apartments. From \$295. For information, visit the Treehouse Village Apartments Leasing Office at 800 Marion Pugh Blvd. College Station, Texas 77840 409/764-8892



Professionally managed by Callaway Properties.