

FOR RENT

BAKER STREET MINI WAREHOUSE
5x5 to 10x30
\$18 to \$77
846-5794 DAYS
779-3938 NIGHTS

Fourplex Apts. Newly remodeled \$250.00 per month. Two bedroom, one bath, W/D connections. Convenient to campus. 775-1750 8 a.m.-5 p.m., 779-0992 6 p.m.-9 p.m.

Beautiful large one bedroom washer/dryer, built-in bookcase, large deck overlooking woods. 779-4100 or 846-6701.

Two bedrooms for rent. \$80, \$100, Co-op House, hardy liberal females. 693-2489.

HELP WANTED

SAFeway, INC.
Has part-time evening sacker positions available at the College Station Store. Pay rate begins at \$3.45/hour. Open interview sessions will be held at the College Station Safeway Store (Culpepper Plaza) on Thursday, January 31st from 8pm-9pm.
Equal Opportunity Employer
M/F/H/V

THE GREENERY
Landscape Maintenance Crew Member
Full or Part-Time
Call 823-7551 or
Come by 1512 Cavitt, Bryan.

Immediate openings for TAMU students and spouse. 1. 24-28 hours per week. 2. 34-40 hours per week. Hours vary but fall between 1p.m.-9p.m. M-F plus Saturday 9a.m.-1p.m. Exercise instructors aerobics experience helpful training available. Apply in person 9a.m.-5p.m. M-F at SHAPE WAY Fitness Center for Women, 3710 E. 29th Street, Bryan.

DEPENDABLE MEN, WOMEN OR COUPLES for present and future Houston Post routes. Early morning hours. Papers rolled by machine. \$200-\$750/month.
846-2911 846-1253

CRUISESHIPS HIRING! \$16-\$30,000! Caribbean, Hawaii, World. Call for Guide, Directory, Newsletter. 1-(916) 944-4444 Texas&Merise.

Medical social worker and licensed physical therapist needed for home health visits. Contract or staff. Flexible schedule 779-3733.

Part-time appointment secretary \$ 6.00/hr. Telephone work (no selling) 5:00 p.m.-9:00 p.m. Sun.-Thurs. or less. Tommy 846-4731.

AIRLINES HIRING! \$14-\$39,000! Stewardesses, Reservationist! Worldwide! Call for guide, Directory, Newsletter. 1-(916) 944-4444 ext. Texas&Merise.

FOR SALE

HP-41C For Sale. Only \$100. Call 846-9412.

Loft for sale. 6x8x5. Sturdy, w/ mattress \$65.00, w/o mattress, \$30.00. 268-0186.

Wulbur VT100 compatible terminal rental. 1200 band modems lease/purchase. 845-0808, 696-5056.

Honda V65 Magna 1100. Candy Maroon. Burglar Alarm System. \$3000.00 Price negotiable. 260-4892.

1976 Honda 550-4 excellent condition. 17,000 miles \$600.00. Mark, 823-8126.

PERSONALS

PROBLEM PREGNANCY? Abortion procedures and referrals - Free pregnancy testing. Houston, Texas (713)271-0121.

"NEW CREDIT CARD! NO ONE REFUSED" ALSO INFORMATION ON RECEIVING VISA, MASTERCARD WITH NO CREDIT CHECK. FREE BROCHURE. CALL: 602-990-2854 Extension 505.

LOST AND FOUND

LOST: Gold shrimp bracelet between Agronomy Building and Biological Building. Healthy reward offered if found call 693-3843.

Black and green ski jacket. Gerry brand. Please return if found! 693-8435.

ROOMMATE WANTED

Roommate needed M/F own bedroom/bath \$138 plus utilities, W/D, 693-0789.

Female roommate needed for "cottage" off Welsh, Gable, 696-1483 home, 846-4731 work.

Need one roommate. Have partially furnished house two blocks from campus. Own bedroom. \$130.00, 693-4910.

BUSINESS OPPORTUNITY

\$10-\$360 weekly/tp mailing circulars! No bosses/quotas! Sincerely interested rush self-addressed envelope: Dept. AN-7, POD910CEW, Woodstock, IL 600888210

SERVICES

ON THE DOUBLE
All kinds of typing at reasonable rates. Dissertations, theses, term papers, resumes. Typing and copying at one stop. ON THE DOUBLE 331 University Drive. 846-3755.

JOB WINNING RESUMES
We Do It All! Expert services include: EDITING, LAYOUT, TYPING, AND QUALITY TYPESETTING. CUSTOM DESIGNS & FORMATS ARE CREATED SPECIALLY FOR YOU!
MIDLAND HEIGHTS INTERNATIONAL
403 University Drive W.
above Campus Photo, 846-6486.

Planning a Party? D.J. Party Service has just the music, and this semester try our Friday Special just \$125. For booking information feel free to call DAVID KIEL 846-1838.

WORD PROCESSING all kinds. By appointment only. Call 775-6178 anytime.

GAYLINE-Information, referrals, peer-counseling. Monday-Friday, 5:00-10:00. 775-1797.

Professional typing on the word processor. I specialize in thesis, dissertation and technical reports. 846-6486.

Typing, word processing, resumes. Lowest prices, highest quality in town. PERFECT PRINT, 822-1430.

On campus typing service. Fast accurate reasonable experienced, convenient. Call Robin 260-6878.

Professional Typing. Twenty years experience. Labs, thesis, term papers, equations, etc.

A Cut Above ...
HAPPY HOUR
\$2 off any haircut
Monday & Tuesday 9 a.m.-Close
Professional Consultation Before Your Service
846-1599
Tues.-Fri. 8:30-7
Sat. 9-5
Inside the Ramada College Station

UNIVERSAL GROCERY & SNACK BAR
CHINESE LUNCH SPECIAL \$2.00
-Eggrolls & Wontons-
Imported Oriental Groceries-Exotic Foods
All within walking distance of Campus
Across from Blocker Bldg. & St. Mary Center
110 Nagle -C.S. 846-1210

Is Tennis Your Racquet?
then
Come to TAMU Tennis Club's
1st Semester Meeting
Wed., Jan. 30th
Room 510 Rudder 7 p.m.
Refreshments Served

JOIN APO
PAINT THE COMMUNITY WITH SERVICE
MEET FRIENDS
BE A LEADER
RUSH:
Room 224 MSC 7 p.m.
Room 224 MSC 7 p.m.

Jubilation
Free Coffee
for Aggies
All Night Long
Jubilation in Post Oak Mall is giving A&M students with ID a place to study, socialize or relax Wednesday thru Sunday 24 hrs. a day with free coffee. No purchase necessary.
764-1700

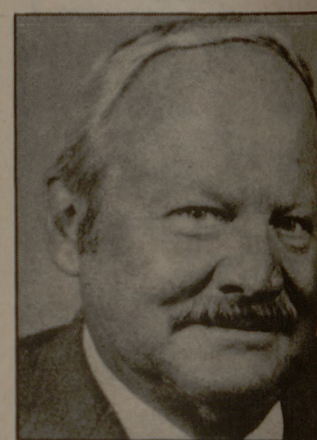
SIGMA PHI EPSILON
presents the Ninth Annual
SIGMA PHI EPSILON
FIGHT NIGHT
Fri. April 19 & April 20
Brazos County Pavilion
Entry Fee: \$60 per team
(4-5 man team; all fighters must be on a team)
Weight Classes:
Feather Weight 140 lbs.-down
Light Weight 141-155 lbs.
Middle Weight 156-170 lbs.
Light Heavy Weight 171-185 lbs.
Heavy Weight 186-205 lbs.
Deadline for entries March 4
For more information call:
Mark Lavine 764-1773
Jeff Collins 764-2972

STATE AND LOCAL

Merchant marine conditions need upgrading: A&M prof

By **JERRY OSLIN**
Staff Writer
If the condition of the U.S. merchant marine is not improved, the United States could face serious military transportation problems in the next war, the new head of the National Advisory Committee on Ocean and Atmosphere says.
"If we in the country don't do something to improve the merchant marine, we may not have enough ships to meet our strategic needs of moving a division from here to somewhere else in the event of a war," says Professor John E. Flipse, associate dean of engineering at Texas A&M.
The committee Flipse chairs advises the president and congress on marine and atmospheric science policy.
Flipse, appointed chairman by President Reagan on Wednesday, believes the United States is losing its merchant marine ships and its ability to build them.
"The ships we have right now are

old and the useable number is getting fewer and fewer every year," he says. "In addition to that, it costs more to build ships here than it does overseas, so we are losing our ships and our ship-building capability."
Flipse says a ship-building capability is important because it is a significant part of the nation's industrial base and is indispensable in time of war.
Flipse says it will be difficult for his committee to help solve the merchant marine problem because of the politics involved.
"The government already has an organization called the Maritime Administration which is part of the Department of Transportation," he says. "Its mission is to provide the country with an adequate merchant marine and to meet the needs of a wartime emergency. The criticism is that it's not doing its job."
"The problem is: how can this advisory committee provide guidance to the president and congress on this problem without causing difficulty



John E. Flipse

and hurting people? It's no small problem."
"We have excellent talent on the committee," he says. "We have six people from academia, six from industry and six from the environmental and political community."

Sully's Symposium starts this week

By **SHERRY TOFTE**
Reporter
The four class presidents will be the guest speakers at Sully's Symposium as Lambda Sigma begins its spring series Wednesday.
The symposium will begin at noon in front of the Lawrence Sullivan

Ross statue outside the Academic Building.
The class presidents are Jim Allen, '85; Pre Ball, '86; Keith McBride, '87; and Dion Laurent, '88.
They will discuss the class goals and activities scheduled for the spring semester. They also will have

a chance to explain what their role as class president involves as well as their opinions about what distinguishes one class from the other.
A question-and-answer session will follow the speeches to allow students direct responses from the class presidents.

MOSES HALL
REAL MEN!
REAL PARTIES!
DG CHECKERS
MOORE
RAB

GRADUATING ENGINEERS
You can't believe everything you read.
Including this ad. Or any other that attempts to sell you on a potential employer in 200 words or less. Because selecting an employer requires significantly more information than choosing a toothpaste. The type of information that can't only be gleaned from conversation with an insider - someone who can readily provide factual answers to hard questions.
Undoubtedly you'll want to ask about training. For without ongoing career development, your degree isn't worth the paper it's printed on.
That's why NL McCullough places such a premium on continuing education, both in the field and at our \$25 million Career Development Center in Houston. Because we recognize its importance to our people. And its role in making us one of the leaders in oilfield based and open hole logging, perforating and pipe recovery.
But don't believe everything you read. Talk to the NL McCullough representative interviewing **Mechanical and Electrical Engineers** at Texas A&M on **February 4**. Or if you are a candidate for any Engineering degree in the spring or summer, you may send your resume to:
Bob Chauvin
NL McCullough
Human Resources Development
P.O. Box 60060
Houston, Texas 77205
NL McCullough Industries, Inc.
Because better training means better people.
And a better company.
An Equal Opportunity Employer